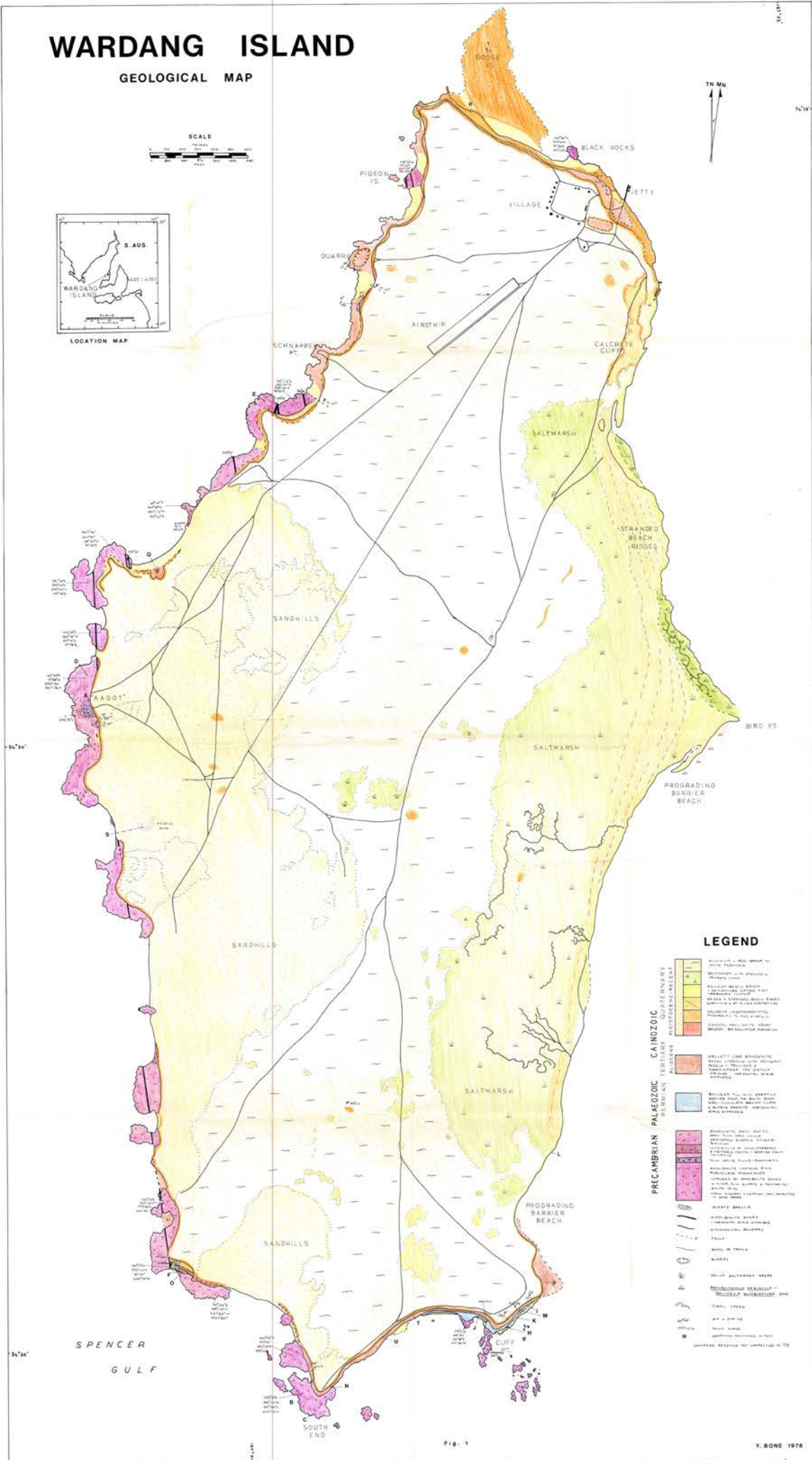


WARDANG ISLAND

GEOLOGICAL MAP



LEGEND

- | | | |
|---|---|---|
| PRECAMBRIAN
PENNYCRAIG
GLENKILL
CARRINGTON
SHARPS
BUCKLEY | PALAEZOIC
MOUNT RICHMOND
MOUNT AUSTIN
MOUNT SHELTON | CAINOZOIC
LATE PLIOGENE
PLIOGENE
PLEISTOCENE
QUATERNAIRE
ALLUVIUM
SANDS AND GRAVELS
CLAY AND SILT
COARSE SANDS
CLAY AND SILT
CLAY AND SILT
CLAY AND SILT
CLAY AND SILT |
|---|---|---|
- BEACH
 - ROAD
 - TRACK
 - PROPERTY BOUNDARY
 - CLIFF
 - STREAM
 - SPRING
 - WELL
 - MOUND
 - QUARRY
 - ROCK OUTCROP
 - SEA STACK
 - SEA STACK WITH VEGETATION
 - SEA STACK WITH VEGETATION AND POOL
 - SEA STACK WITH POOL
 - SEA STACK WITH POOL AND VEGETATION
 - SEA STACK WITH POOL AND VEGETATION AND CLIFF
 - SEA STACK WITH POOL AND VEGETATION AND CLIFF AND MOUND

Fig. 1