

PUBLISHED VERSION

N. Mullins, N. Perroud, R. Uher, A.W. Butler, S. Cohen-Woods, M. Rivera, K. Malki, J. Euesden, R.A. Power, K.E. Tansey, L. Jones, I. Jones, N. Craddock, M.J. Owen, A. Korszun, M. Gill, O. Mors, M. Preisig, W. Maier, M. Rietschel, J.P. Rice, B. Muller-Myhsok, E.B. Binder, S. Lucae, M. Ising, I.W. Craig, A.E. Farmer, P. McGuffin, G. Breen, and C.M. Lewis

Genetic relationships between suicide attempts, suicidal ideation and major psychiatric disorders: a genome-wide association and polygenic scoring study

American Journal of Medical Genetics, Part B: Neuropsychiatric Genetics, 2014; 165(5):428-437

© 2014 The Authors. American Journal of Medical Genetics Part B: Neuropsychiatric Genetics published by Wiley Periodicals, Inc. This is an open access article under the terms of the Creative Commons Attribution License, which permits use, distribution and reproduction in any medium, provided the original work is properly cited.

Originally published at:

<http://doi.org/10.1002/ajmg.b.32247>

PERMISSIONS

<http://creativecommons.org/licenses/by/3.0/>



Attribution 3.0 Unported (CC BY 3.0)

This is a human-readable summary of (and not a substitute for) the [license](#).

[Disclaimer](#)



You are free to:

Share — copy and redistribute the material in any medium or format

Adapt — remix, transform, and build upon the material

for any purpose, even commercially.

The licensor cannot revoke these freedoms as long as you follow the license terms.

Under the following terms:



Attribution — You must give **appropriate credit**, provide a link to the license, and **indicate if changes were made**. You may do so in any reasonable manner, but not in any way that suggests the licensor endorses you or your use.

No additional restrictions — You may not apply legal terms or **technological measures** that legally restrict others from doing anything the license permits.

15 November 2016

<http://hdl.handle.net/2440/102228>

Genetic Relationships Between Suicide Attempts, Suicidal Ideation and Major Psychiatric Disorders: A Genome-Wide Association and Polygenic Scoring Study

Niamh Mullins,^{1*} Nader Perroud,² Rudolf Uher,^{1,3} Amy W. Butler,^{1,4} Sarah Cohen-Woods,⁵ Margarita Rivera,^{1,6} Karim Malki,¹ Jack Euesden,¹ Robert A. Power,¹ Katherine E. Tansey,⁷ Lisa Jones,⁸ Ian Jones,⁷ Nick Craddock,⁷ Michael J. Owen,⁷ Ania Korszun,⁹ Michael Gill,¹⁰ Ole Mors,¹¹ Martin Preisig,¹² Wolfgang Maier,¹³ Marcella Rietschel,^{13,14} John P. Rice,¹⁵ Bertram Müller-Myhsok,¹⁶ Elisabeth B. Binder,¹⁶ Susanne Lucae,¹⁶ Marcus Ising,¹⁶ Ian W. Craig,¹ Anne E. Farmer,¹ Peter McGuffin,¹ Gerome Breen,^{1,17} and Cathryn M. Lewis^{1,18}

¹MRC Social, Genetic and Developmental Psychiatry Centre, Institute of Psychiatry, King's College London, London, United Kingdom

²Psychiatry, University Hospital of Geneva, Geneva, Switzerland

³Department of Psychiatry, Dalhousie University, Halifax, Nova Scotia, Canada

⁴Department of Psychiatry, University of Hong Kong, Hong Kong, Special Administrative Region, China

⁵Department of Psychiatry, University of Adelaide, Adelaide, Australia

⁶Centro de Investigación Biomédica en Red de Salud Mental, CIBERSAM, University of Granada, Granada, Spain

⁷MRC Centre for Neuropsychiatric Genetics and Genomics, Neuroscience and Mental Health Research Institute, Cardiff University, Cardiff, United Kingdom

⁸Department of Psychiatry, School of Clinical and Experimental Medicine, University of Birmingham, Birmingham, United Kingdom

⁹Barts and The London Medical School, Queen Mary University of London, London, United Kingdom

¹⁰Department of Psychiatry, Trinity Centre for Health Science, Dublin, Ireland

¹¹Research Department P, Aarhus University Hospital, Risskov, Denmark

¹²University Hospital Center and University of Lausanne, Lausanne, Switzerland

¹³Department of Psychiatry, University of Bonn, Bonn, Germany

¹⁴Division of Genetic Epidemiology in Psychiatry, Central Institute of Mental Health, Mannheim, Germany

¹⁵Department of Psychiatry, Washington University, St. Louis, Missouri

¹⁶Max Planck Institute of Psychiatry, Munich, Germany

¹⁷NIHR Biomedical Research Centre for Mental Health, South London and Maudsley NHS Foundation Trust and Institute of Psychiatry, King's College London, London, United Kingdom

¹⁸Division of Genetics and Molecular Medicine, King's College London School of Medicine, Guy's Hospital, London, United Kingdom

Manuscript Received: 20 January 2014; Manuscript Accepted: 23 May 2014

This is an open access article under the terms of the Creative Commons Attribution License, which permits use, distribution and reproduction in any medium, provided the original work is properly cited.

Conflict of interest: Farmer and McGuffin have received consultancy fees and honoraria for participating in expert panels for pharmaceutical companies, including GlaxoSmithKline. Ising has received consultancy honoraria from MSD Merck. Binder has received grant support from PharmaNeuroboost. Lewis has received consultancy honoraria from Eli Lilly. All other authors declare no conflicts of interest.

Grant sponsor: Medical Research Council, UK; Grant sponsor: GlaxoSmithKline G0701420; Grant sponsor: The National Institute for Health Research (NIHR) Biomedical Research Centre for Mental Health at South London; Grant sponsor: Maudsley NHS Foundation Trust; Grant sponsor: Institute of Psychiatry, King's College London; Grant sponsor: German Federal Ministry of Education and Research; Grant sponsor: European Commission Framework 6.

*Correspondence to:

Niamh Mullins, MRC Social, Genetic and Developmental Psychiatry Centre, Institute of Psychiatry, King's College London, 16 De Crespigny Park, London SE5 8AF, United Kingdom. E-mail: niamh.mullins@kcl.ac.uk

Article first published online in Wiley Online Library

(wileyonlinelibrary.com): 25 June 2014

DOI 10.1002/ajmg.b.32247

Epidemiological studies have recognized a genetic diathesis for suicidal behavior, which is independent of other psychiatric disorders. Genome-wide association studies (GWAS) on suicide attempt (SA) and ideation have failed to identify specific genetic variants. Here, we conduct further GWAS and for the first time, use polygenic score analysis in cohorts of patients with mood disorders, to test for common genetic variants for mood disorders and suicide phenotypes. Genome-wide studies for SA were conducted in the RADIANT and GSK-Munich recurrent depression samples and London Bipolar Affective Disorder Case-Control Study (BACCs) then meta-analysis was performed. A GWAS on suicidal ideation during antidepressant treatment had previously been conducted in the Genome Based Therapeutic Drugs for Depression (GENDEP) study. We derived polygenic scores from each sample and tested their ability to predict SA in the mood disorder cohorts or ideation status in the GENDEP study. Polygenic scores for major depressive disorder, bipolar disorder and schizophrenia from the Psychiatric Genomics Consortium were used to investigate pleiotropy between psychiatric disorders and suicide phenotypes. No significant evidence for association was detected at any SNP in GWAS or meta-analysis. Polygenic scores for major depressive disorder significantly predicted suicidal ideation in the GENDEP pharmacogenetics study and also predicted SA in a combined validation dataset. Polygenic scores for SA showed no predictive ability for suicidal ideation. Polygenic score analysis suggests pleiotropy between psychiatric disorders and suicidal ideation whereas the tendency to *act* on such thoughts may have a partially independent genetic diathesis. © 2014 The Authors. *American Journal of Medical Genetics Part B: Neuropsychiatric Genetics* published by Wiley Periodicals, Inc.

Key words: pleiotropy; meta-analysis; prediction; association

INTRODUCTION

Suicide is one of the ten leading causes of death and rates of suicide are far exceeded by suicide attempts, which occur up to 20 times more frequently [World Health Organisation, 2005; Lim et al., 2012]. Over 90% of suicide attempters or victims have a psychiatric diagnosis, particularly major depression and bipolar disorder [Beautrais et al., 1996; Qin, 2011]. However, twin, family and adoption studies have recognized a genetic component to suicidal behavior, which is independent of other psychiatric disorders [Schulsinger et al., 1979; Brent et al., 1996; Roy and Segal, 2001]. This supports a stress-diathesis model whereby psychiatric illnesses or other life stressors are not exclusively responsible for suicide attempts (SA) but rather that they may *aggravate* an individual's genetic predisposition to suicidal behavior [Mann et al., 1999].

Candidate gene association studies on suicidal behavior have yielded either inconsistent or negative results. Similarly, genome-wide association studies (GWAS) performed to date have failed to identify associations at the genome-wide significance level [Perlis et al., 2010; Schosser et al., 2011; Willour et al., 2012; Galfalvy et al., 2013]. Other genetic studies have focused on treatment

How to Cite this Article:

Mullins N, Perroud N, Uher R, Butler AW, Cohen-Woods S, Rivera M, Malki K, Euesden J, Power RA, Tansey KE, Jones L, Jones I, Craddock N, Owen MJ, Korszun A, Gill M, Mors O, Preisig M, Maier W, Rietschel M, Rice JP, Müller-Myhsok B, Binder EB, Lucae S, Ising M, Craig IW, Farmer AE, McGuffin P, Breen G, Lewis CM. 2014. Genetic relationships between suicide attempts, suicidal ideation and major psychiatric disorders: A genome-wide association and polygenic scoring study.

Am J Med Genet Part B 165B:428–437.

emergent or treatment worsening suicidal ideation (SI) in patients taking antidepressant drugs [Laje et al., 2009; Perroud et al., 2012].

One model for suicidal behavior is as a complex trait, which occurs when the joint effect of many risk and protective genetic variants, together with an environmental contribution, crosses a certain liability threshold. GWAS captures alleles that are common in the population and are each likely to have a very small effect on a complex phenotype [Wray et al., 2007]. Simultaneously investigating thousands of SNPs, which individually do not reach statistical significance, could explain a greater amount of the heritability. Polygenic score analysis uses ensembles of SNPs from a GWAS in a discovery sample, weighted by their log odds ratios to create a score across all these alleles for each individual in an independent validation sample [Dudbridge, 2013]. The polygenic score can then be tested for its ability to predict case and control status in the validation dataset or to predict a different phenotype in the validation dataset, to investigate pleiotropy between traits [Purcell et al., 2009].

Suicidal behavior and ideation have been associated with most psychiatric and behavioral disorders. Pleiotropic genetic effects have been identified between several disorders which have shared symptoms or are commonly comorbid, using polygenic scores for one disorder to predict another [Purcell et al., 2009].

GWAS on suicide attempt in patients with mood disorders may detect genetic variants predisposing to SA which are independent of psychiatric disorders and a meta-analysis may identify novel associations and reduce false positive results. Polygenic score analysis could explain a larger component of the heritability of suicidal behavior, than would individual alleles with small effect sizes. There may be pleiotropic genetic effects between suicide attempt or ideation and depression, schizophrenia or bipolar disorder, since suicidality is a common comorbidity in these illnesses.

In this article, we test for genetic associations with suicide attempt and suicidal ideation in four studies of depression and bipolar disorder. Using these, and results from the Psychiatric Genomics Consortium, we construct polygenic scores and test their predictive ability for suicide attempt and ideation.

MATERIALS AND METHODS

Clinical Sample Collection

A GWAS on SA has previously been conducted in the RADIANT sample ($n = 2,023$) of patients with recurrent major depressive disorder [Schosser et al., 2011]. Briefly, patients were diagnosed using the Schedules for Clinical Assessment in Neuropsychiatry Interview (SCAN), according to standardised criteria in the International Classification of Diseases 10th edition (ICD-10) or Diagnostic and Statistical Manual 4th edition (DSM-IV) [World Health Organisation, 1998; Wing et al., 1990; American Psychiatric Association, 2000]. The SCAN was used to record information on patients' worst and second worst episodes of depression including suicidal behavior. Exclusion criteria have been described previously and include Axis I diagnoses other than anxiety disorder [Farmer et al., 2004; Cohen-Woods et al., 2009].

The GSK-Munich recurrent depression cohort ($n = 807$) was recruited at the Max-Planck Institute of Psychiatry, Germany according to the same protocol [Muglia et al., 2010].

Participants in the Bipolar Affective Disorder Case Control Study (BACCs) ($n = 470$) were recruited in London, United Kingdom in the same manner and assessed for diagnosis using the SCAN interview and Operational Criteria Checklist for Psychotic Illness Program [McGuffin et al., 1991]. Exclusion criteria have been described previously [Gaysina et al., 2009].

A GWAS on treatment-emergent and treatment-worsening suicidal ideation has also been reported in the Genome Based Therapeutic Drugs for Depression Study (GENDEP), comprised of patients with major depression on a 12 week antidepressant treatment with either escitalopram—a selective serotonin reuptake inhibitor or nortriptyline—a tricyclic antidepressant [Uher et al., 2010; Perroud et al., 2012].

Participants in all studies were of European ancestry. Whole blood samples were collected in ethylene-diamine-tetra-acetic acid (EDTA) for genetic analysis.

Phenotype Definitions

Suicide attempt was defined using a question on the SCAN interview, as self-injury or suicide attempt resulting in serious harm, or an attempt at suicide designed to result in death [Schosser et al., 2011]. Evidence collected retrospectively for the worst and second worst depressive episode was used in this study.

In the GENDEP study, participants were evaluated weekly using the 17-item Hamilton Rating Scale for Depression, the self-report Beck Depression Inventory and the Montgomery-Asberg Depression Rating Scale, which each include a question on suicidal ideation [Hamilton, 1960; Beck et al., 1961; Montgomery and Asberg, 1979]. A composite score was used to define suicidal ideation at baseline, treatment emergent (TESI) and treatment worsening suicidal ideation (TWOSI) [Perroud et al., 2009]. Individuals with either TWOSI or TESI were considered as cases and those with no suicidal ideation or baseline ideation which did not worsen during treatment were used as controls.

Genotyping

DNA was extracted from blood samples and those of sufficient quantity and quality were genotyped [Freeman et al., 2003]. GSK-Munich and BACCs samples were genotyped on Illumina Human-Hap550-Quad+ BeadChip microarrays (Illumina, Inc., San Diego, CA). RADIANT and GENDEP samples were genotyped on Illumina Human610-Quad BeadChip (Illumina, Inc.) by the Centre National de Génotypage (Evry Cedex, France).

Statistical Analysis

Standard quality control procedures were implemented in all studies to clean the data and control for population stratification [Lewis et al., 2010; Schosser et al., 2011; Perroud et al., 2012].

GWAS on SA were performed by logistic regression using the whole genome analysis toolset PLINK 1.07 (<http://pngu.mgh.harvard.edu/purcell/plink/>) [Purcell et al., 2007] in the GSK-Munich and BACCs samples and have previously been reported in RADIANT [Schosser et al., 2011]. A GWAS on TESI/TWOSI has also been reported in GENDEP [Perroud et al., 2012]. To account for multiple testing, genome wide significance was ascribed at $P < 5 \times 10^{-8}$ and findings of suggestive significance at $P < 5 \times 10^{-6}$ [Dudbridge and Gusnanto, 2008]. Principal components were included as covariates to account for population stratification and the median chi-squared test statistic (λ) was used to test the quality of control [Devlin et al., 2001]. This was close to 1 in all studies (Supplementary material), suggesting no inflation of test statistics and so the unadjusted P values were reported.

A fixed effects meta-analysis on SA was performed between the RADIANT, GSK-Munich, and BACCs studies, using inverse variance weighting to combine the results [Evangelou and Ioannidis, 2013].

Assuming a discrete trait Case-Control model, the Genetic Power Calculator [Purcell et al., 2003] was used to determine the power to detect association at both significance levels, for the individual studies and meta-analysis (Supplementary material).

The GWAS results from these four discovery studies were pruned for linkage disequilibrium (LD) using the P -value informed clumping method in PLINK. This preferentially retains SNPs with the strongest evidence of association and removes SNPs in LD that show weaker evidence of association. Subsets of SNPs were selected from the results at 5 increasingly liberal P value thresholds ($P < 0.01$, $P < 0.05$, $P < 0.1$, $P < 0.3$, $P < 0.5$). Sets of alleles, weighted by their original log odds ratios (OR) in the GWAS, were summarized into a polygenic score for each individual in the different validation datasets using PLINK. The polygenic score was tested for ability to predict SA or TWOSI/TESI in the validation sample using logistic regression, with principal components as required, to calculate Nagelkerke's pseudo- R^2 , a measure of the variance explained [Nagelkerke, 1991].

The same procedures were followed using GWAS summary results from the Psychiatric Genomics Consortium available online (<https://pgc.unc.edu/>). Polygenic scores for major depressive disorder (PGC-MDD), bipolar disorder (PGC-BIP) and schizophrenia (PGC-SCZ) were tested for ability to predict SA or TWOSI/TESI in each of the four validation samples [Psychiatric GWAS Consortium Bipolar Disorder

Working Group, 2011; Schizophrenia Psychiatric Genome-Wide Association Study (GWAS) Consortium, 2011]. In the case of PGC-MDD, published results were from a mega-analysis of nine studies, which included the RADIANT and GSK-Munich samples [Major Depressive Disorder Working Group of the Psychiatric Genomics Consortium, 2013]. Meta-analyses were repeated using summary results from the individual studies and excluding the RADIANT or GSK-Munich sample as required, avoiding overlap between discovery and validation datasets, which could cause false positive results. Finally, the RADIANT, GSK-Munich and BACCs datasets were also combined into one larger validation sample and polygenic scores for psychiatric disorders from the PGC studies in MDD, SCZ, and BIP were tested as predictors of SA. Statistical analysis was performed using R 3.0.0.

A literature review was performed using Pubmed <http://www.ncbi.nlm.nih.gov/pubmed/> to investigate genes previously associated with suicidal ideation, suicide attempt or related endophenotypes for a candidate association study. All genotyped SNPs within the selected candidate genes were extracted from the meta-analysis results. SNPs were pruned for LD by P value informed clumping and the threshold for significance was calculated using a Bonferroni correction for the number of SNPs tested (Supplementary material).

Ethical Approval

All patients gave written informed consent to take part in these studies. Data were anonymized with a research identification number only. Ethical approval was obtained from the Ethics Committee at the Institute of Psychiatry, King's College London or the local ethics committee at each center of recruitment.

RESULTS

Sample Characteristics

Sample characteristics are shown in Table I. A similar proportion of cases in RADIANT, GSK-Munich, and BACCs studies were suicide attempters (12–16%), while rates of TESI/TWOSI in the GENDEP study were higher (32%).

Genome-Wide Association Analysis

No SNP reached genome-wide significance in the GWAS on SA in GSK-Munich and BACCs (Supplementary material). rs9351947 on

chromosome 6 reached suggestive significance in the GSK-Munich analysis, whereas the BACCs sample was underpowered to detect such effects (power calculations shown in Supplementary material).

The fixed effects meta-analysis performed between the RADIANT, GSK-Munich and BACCs studies on SA, had much higher power to detect association (87% power at the suggestive significance level for a minor allele with a frequency of 0.2 and OR = 1.5 and 57% power at genome-wide significance). No SNP reached genome-wide significance (Table II). SNPs on chromosomes 7, 4 and 11 reached suggestive significance, and had not reached this threshold in the individual study analysis (Fig. 1). Meta-analysis did not provide any further support for any of the SNPs of suggestive significance in the individual studies (Supplementary material).

Candidate Association Study

From the meta-analysis, a candidate association study of 19 genes previously associated with suicide was also performed though no SNPs were significant after a Bonferroni correction was applied (Supplementary material). A SNP in *ABI3BP* had reached GWAS significance in a previous study of SA in depression, however the finding did not replicate in this analysis [Perlis et al., 2010].

Polygenic Score Analysis

SNPs from four discovery GWAS on suicide attempt (RADIANT, GSK-Munich, BACCs), one study on suicidal ideation (GENDEP) and three studies on psychiatric disorders (PGC-MDD, PGC-BIP, PGC-SCZ) were used to derive polygenic scores for each individual in four validation datasets (RADIANT, GSK-Munich, BACCs, GENDEP). Subsets of SNPs were selected according to increasingly liberal P value thresholds (P_T) in the discovery phase GWAS analysis. Scores were tested for their ability to predict suicide attempt or ideation in the validation samples by calculating Nagelkerke's pseudo R^2 , a measure of the variance explained (Fig. 2).

In the RADIANT validation sample, only polygenic scores for TESI/TWOSI derived from GENDEP showed significant predictive ability for suicide attempt ($P = 0.021$) (Fig. 2). The Nagelkerke R^2 was 0.005 indicating that 0.5% of variance in the phenotype could be explained by SNPs within $P_T < 0.01$ of the GENDEP polygenic score, with no significant prediction obtained at other P value thresholds.

In the GSK-Munich validation dataset, none of the polygenic scores showed any significant predictive ability (Fig. 2). The P_T

TABLE I. Sample Characteristics

Sample	No. individuals	No. SA or TESI/TWOSI cases [%]	No. females [%]	Mean age onset, SD [years]	Mean age at interview, SD [years]
RADIANT ^a	2,023	251 [12.4%]	1,477 [73.0%]	22.7 [11.5]	46.2 [12.0]
GSK-Munich ^a	807	106 [13.1%]	531 [65.8%]	35.8 [14.1]	51.1 [13.8]
BACCs ^a	440	69 [15.7%]	294 [66.8%]	21.7 [8.4]	47.7 [11.5]
Meta-analysis ^b	3,270	426 [13.0%]	2,302 [70.4%]	26.0 [13.3]	47.6 [12.5]
GENDEP ^c	747	237 [31.7%]	470 [62.9%]	32.1 [10.4]	41.9 [11.7]

^aCases are suicide attempters.

^bRADIANT, GSK-Munich, and BACCs studies.

^cCases in the GENDEP study are those with suicidal ideation.

TABLE II. Fixed Effects Meta-Analysis of RADIANT, GSK-Munich, and BACCs results in an Additive Genetic Model Showing the Most Significant SNP From Each Genomic Region

SNP	CHR	BP	Tested allele	Allele freq ^a	Closest gene ^b	Meta-analysis			RADIANT			GSK-Munich			BACCs		
						P value	OR (C.I.)	i ² (%)	P value	OR	P value	OR	P value	OR	P value	OR	
rs17173608	7	149667597	G	0.058	<i>RARRES2</i>	2.41E-07	1.93 (1.69-2.19)	0	1.52E-04	1.92	1.59E-03	2.16	9.57E-02	1.67			
rs17387100	4	15604223	G	0.078	<i>PROM1</i>	7.98E-07	1.76 (1.54-1.99)	8.4	1.00E-05	1.92	3.59E-01	1.26	1.28E-02	1.92			
rs3781878	11	112625422	A	0.272	<i>NCAM1</i>	1.98E-06	0.65 (0.48-0.83)	0	2.11E-03	0.70	6.61E-03	0.61	8.83E-03	0.56			
rs17010519	2	74995810	C	0.493	<i>HK2</i>	1.15E-05	1.39 (1.24-1.54)	0	5.05E-04	1.41	2.41E-02	1.40	1.42E-01	1.32			
rs13049531	21	34916581	A	0.086	<i>RCAN1</i>	1.27E-05	1.65 (1.43-1.88)	0	2.44E-03	1.56	2.31E-02	1.75	2.41E-02	1.86			
rs9394433	6	37488302	C	0.400	<i>RNF8</i>	1.30E-05	1.38 (1.24-1.54)	0	3.17E-04	1.42	2.36E-01	1.20	1.31E-02	1.61			
rs10089628	8	13440033	T	0.366	<i>DLC1</i>	1.89E-05	0.70 (0.55-0.87)	0	8.85E-05	0.66	9.55E-02	0.77	2.54E-01	0.80			
rs12173791	6	151866142	A	0.082	<i>CCDC170</i>	2.12E-05	1.66 (1.44-1.90)	0	3.06E-04	1.75	2.85E-02	1.72	3.40E-01	1.33			
rs7035325	9	96449258	A	0.082	<i>FBP1</i>	2.55E-05	1.67 (1.43-1.91)	0	9.35E-04	1.66	3.95E-02	1.74	1.10E-01	1.67			
rs2030199	2	225969851	G	0.174	<i>NYAP2</i>	2.82E-05	0.62 (0.41-0.85)	0	8.47E-04	0.62	3.72E-02	0.61	1.39E-01	0.68			

CHR, chromosome; BP, basepair position; OR, odds ratio; CI, confidence interval; i², heterogeneity index.

^aAllele frequencies are from the RADIANT study.

^bThe closest gene to each SNP is shown, as determined using Ensembl.

< 0.3 and $P_T < 0.5$ scores for SA from the GSK-Munich sample had predictive ability for SA in BACCs ($R^2 = 1.6\%$, $P = 0.04$).

Polygenic scores for major depressive disorder from the PGC were significant predictors of TESI/TWOSI in the GENDEP validation dataset (Fig. 2), accounting for 1% of TESI/TWOSI variance ($P_T < 0.3$, $P = 0.015$). Scores for schizophrenia also showed significant predictive ability in GENDEP, but were lower in cases experiencing TESI/TWOSI than controls with no ideation. Polygenic scores for SA showed no predictive ability for suicidal ideation during antidepressant treatment in GENDEP (Fig. 2).

The RADIANT, GSK-Munich, and BACCs validation datasets were merged into a single dataset in order to increase the precision of prediction. This sample has the same characteristics as the meta-analysis ($n = 3,270$) and includes 426 SA cases. Scores for MDD, BIP and SCZ from the PGC were tested as predictors of SA in this combined validation dataset (Supplementary material). PGC-MDD scores showed significant predictive ability for SA, the largest R^2 being 0.3% at $P_T < 0.3$ ($P = 0.013$). Scores from PGC-SCZ also showed significant prediction ($R^2 = 0.2\%$ at $P_T < 0.05$, $P = 0.05$), but the score was lower in SA cases than in non-SA cases, consistent with the previous analysis in the GENDEP sample.

DISCUSSION

Meta-analysis of the RADIANT, GSK-Munich, and BACCs studies found no genome-wide significant SNPs associated with SA (Table II), in common with most previous genome-wide association studies on suicide attempt. This probably reflects the limited power of our sample to detect the genetic contribution to a complex trait like SA in patients with mood disorders. A similar challenge is seen in detecting genetic associations with the underlying mood disorders, where the PGC-MDD study detected no significant loci despite using a sample of over 9,000 cases and 9,000 controls [Major Depressive Disorder Working Group of the Psychiatric Genomics Consortium, 2013].

The GENDEP study was excluded from the meta-analysis because of the different phenotype assessed (suicidal ideation, not suicide attempt), and its design (a prospective study during a 12-week treatment period rather than a retrospective study). There is considerable evidence in the literature that suicidal ideation is not part of the same phenotypic spectrum as SA. An excess of suicidal ideation was found in the relatives of suicide victims but was not significant after adjustment for psychiatric disorders [Brent et al., 1996]. It has been proposed that ideation co-segregates with psychiatric disorders, whereas the tendency to act upon such thoughts has a partially separate genetic diathesis [Mann et al., 1999]. This suggests that suicidal ideation should be excluded from molecular genetic studies on SA.

A SNP in *RARRES2* was the most significant finding in the meta-analysis (Table II). This gene encodes a retinoic acid receptor responder. Retinoic acid is a signaling molecule involved in neurogenesis and has been linked to depression and suicide [O'Reilly et al., 2006; Siegenthaler et al., 2009]. Previous GWAS and linkage studies on SA in different psychiatric disorders and meta-analysis between them, have implicated the 2p12 region [Hesselbrock et al., 2004; Willour et al., 2007; Willour et al., 2012; Butler et al., 2010]. Further support is obtained in this meta-analysis

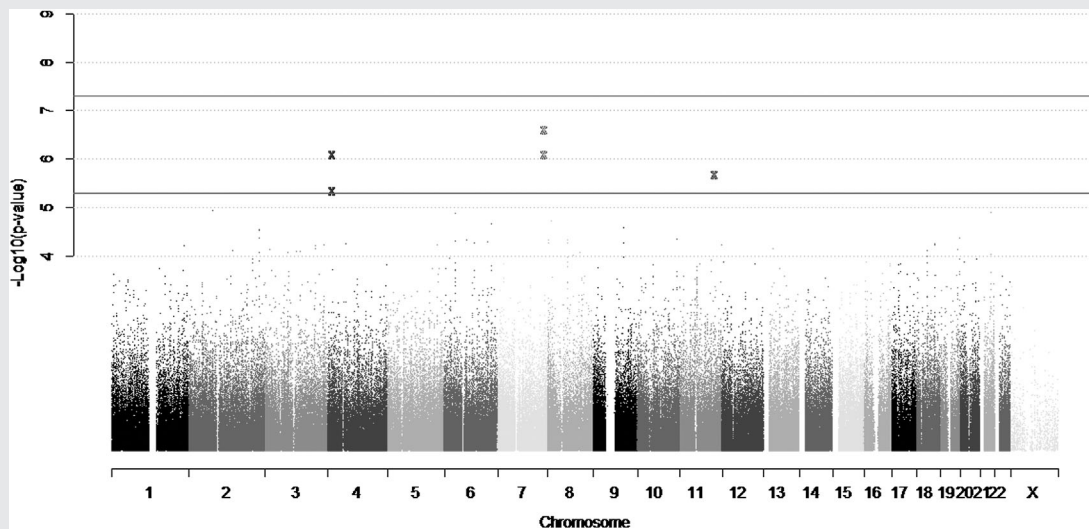


FIG. 1. Manhattan plot of meta-analysis between RADIANT, GSK-Munich, and BACCs samples.

from rs17010519 in the *HK2* gene ($P = 1.15 \times 10^{-5}$) which is within the linkage region previously identified.

Although genome-wide association studies have low power to detect association at a single SNP in psychiatric phenotypes, polygenic score analysis provides an alternative approach, simultaneously testing ensembles of markers, which may not reach significance individually. This approach has been used by the Psychiatric Genomics Consortium and the International Schizophrenia Consortium to investigate major depression and schizophrenia [Purcell et al., 2009; Major Depressive Disorder Working Group of the Psychiatric Genomics Consortium, 2013].

Polygenic scores for SA (RADIANT, GSK-Munich, and BACCs), suicidal ideation (GENDEP) and depression, bipolar disorder and schizophrenia from the PGC, were tested for their ability to predict suicide attempt or ideation in four validation datasets. Some significant predictive ability was found using GENDEP scores for suicidal ideation to predict SA in the RADIANT validation dataset (Fig. 2). The highest R^2 in our analysis was 1.6% using scores for SA from GSK-Munich to predict SA in the BACCs sample (Fig. 2), which is modest but is in line with previous results using polygenic scores for depression and schizophrenia, as predictors in independent samples, 0.6% and 3% respectively [Purcell et al., 2009; Major Depressive Disorder Working Group of the Psychiatric Genomics Consortium, 2013].

This is the first study to use polygenic score analysis on studies of suicide attempt and suicidal ideation, although lack of power is still a limitation, given the moderate sample size of most of the discovery data sets (RADIANT, GSK-Munich, BACCs, and GENDEP) [Dudbridge, 2013]. The size of the validation dataset determines the precision with which the phenotype can be predicted [Dudbridge, 2013]. Validation datasets used here may be too small and this could explain why the majority of polygenic scores did not yield significant P values. Suicide attempt has a heritability of 55%, so if the polygenic score explained half of the heritability of liability, a

sample of many thousands of individuals would still be required to achieve a predictive ability of 75%, which is the standard for screening at risk populations [Voracek and Loibl, 2007; Dudbridge, 2013].

Polygenic scores for MDD, BIP and SCZ from the Psychiatric Genomics Consortium were tested for prediction of SA and suicidal ideation, to investigate possible pleiotropy between these commonly comorbid conditions.

Polygenic scores for psychiatric disorders showed no significant prediction of SA in any of the validation datasets individually (Fig. 2), but scores for MDD did predict SA in the RADIANT, GSK-Munich, and BACCs validation datasets combined (Supplementary material). The limitation of sample size in the discovery phase also applies to the MDD study by the PGC and may reduce the accuracy of this polygenic score [Major Depressive Disorder Working Group of the Psychiatric Genomics Consortium, 2013]. However, combining the validation datasets appears to have allowed more precise prediction which reached statistical significance. Scores for bipolar disorder showed no predictive ability in the combined validation sample, which may be due to the small number of patients with BIP included.

There has been much debate surrounding the relationship between psychiatric disorders and suicide attempt. Many epidemiological studies have shown that suicide and suicide attempt aggregates in families even after controlling for the presence of psychiatric disorders [Brent et al., 1996; Johnson et al., 1998]. Two pedigrees were reported with equal loading for mood disorder, one of which was also loaded for suicide while the other had not a single case of suicide [Egeland and Sussex, 1985]. It has been suggested that the familial transmission of suicide attempt is conditional on but independent of mood disorders [Turecki, 2001]. The results presented here are consistent with a partial pleiotropy between major depression and SA.

Polygenic scores for major depressive disorder significantly predicted suicidal ideation in the GENDEP pharmacogenetic study,

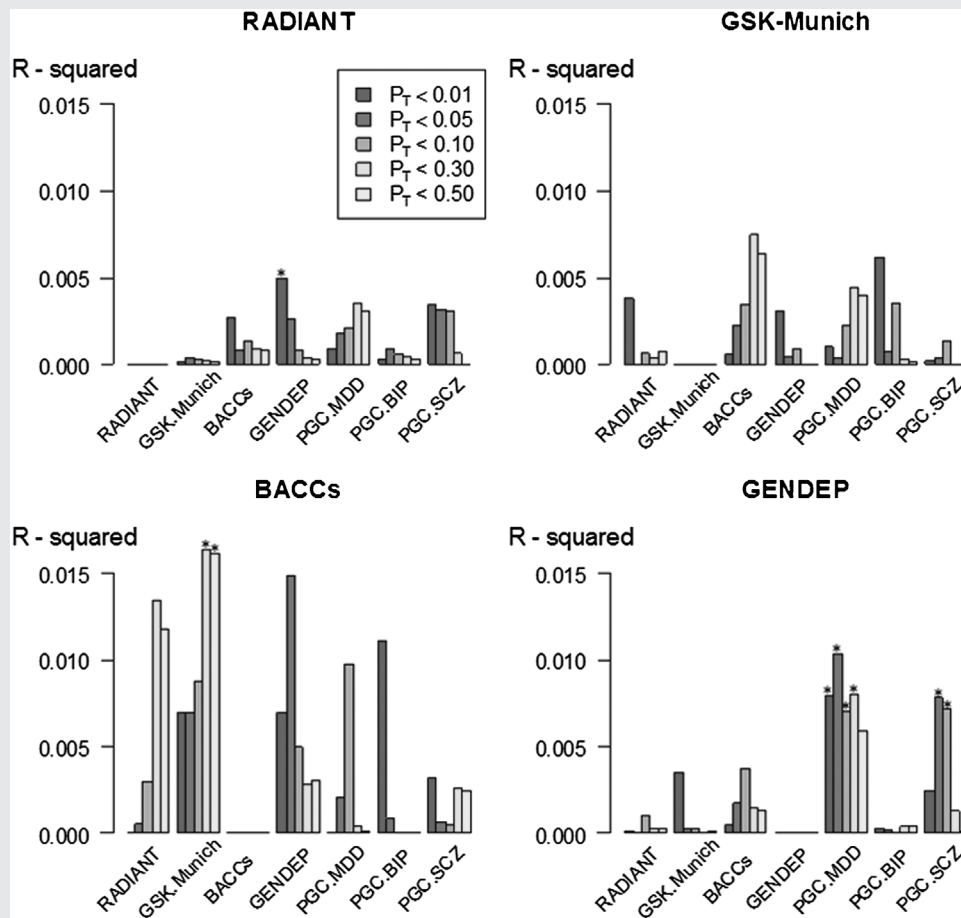


FIG. 2. Polygenic scores for suicide attempt, suicidal ideation, and psychiatric disorders from seven discovery datasets used to predict suicide attempt in the RADIANT, GSK-Munich, and BACCs validation datasets and suicidal ideation in GENDEP. The y-axis indicates Nagelkerke's pseudo R^2 , a measure of the variance explained and the x-axis indicates the discovery datasets from which the polygenic scores were derived. The five P -value thresholds used ($P_T < 0.01$, $P_T < 0.05$, $P_T < 0.10$, $P_T < 0.30$, $P_T < 0.50$) to select SNPs are plotted left to right for each discovery dataset. Stars indicate polygenic scores with significant predictive ability ($P < 0.05$).

suggesting a pleiotropy between liability to depression and TESI/TWOSI (Fig. 2). In contrast, polygenic scores reflecting liability to bipolar disorder did not predict TESI/TWOSI during antidepressant treatment (Fig. 2). These findings suggest that emergence or worsening of suicidal thoughts during treatment with antidepressants is a phenomenon inherent to the genetic liability to depression and is not a reflection of latent or misdiagnosed bipolar disorder [Tansey et al., 2014], as was previously suggested [Berk and Dodd, 2005; Seemuller et al., 2009]. Scores for suicide attempt did not predict TESI/TWOSI in GENDEP, further emphasizing the distinct genetic aetiology of suicidal ideation and suicidal behavior. It is important to note that TESI/TWOSI occurs in a minority of patients on drug treatment. It is unclear whether the aetiology of suicidal ideation lies in the mechanism of action of the antidepressant drug, a genetic susceptibility in the patient or even a mixture of both in a gene-by-drug interaction [Perroud et al., 2012]. Our results suggest that it is an inherent part of the genetic liability to depressive illness.

Since suicidal behavior is a spectrum of severity with heterogeneous genetic architecture, its decomposition by sex, age, number, or violence of attempts could lead to increased homogeneity, but much larger sample sizes would be required for these analyses. Furthermore, an integrative approach, incorporating genetic, epigenetic and environmental effects may be necessary to realistically capture the multifactorial nature of SA.

Molecular genetic studies on suicide attempt may contribute to the development of a biomarker risk model to be used alongside the clinical risk model of current practice in order to target intervention strategies to psychiatric patients at increased risk. Increased insight into the pathophysiology of suicidal behavior could also identify novel therapeutic targets.

In conclusion, the genetic architecture of SA and ideation is likely to be highly polygenic, with risk variants of small effect sizes which these GWAS studies were underpowered to detect, in a SNP-by-SNP analysis. Using polygenic scores as predictors in independent datasets is a more appropriate approach. Polygenic scores indicate

that SA and ideation are unlikely to be different severities of the same spectrum. A genetic susceptibility to suicidal ideation could be part of the genetic aetiology of psychiatric disorders, while in contrast there is likely to be some independent genetic effects, which predispose to suicide attempt.

ACKNOWLEDGMENTS

This work was funded by a joint grant from the Medical Research Council, UK and GlaxoSmithKline [G0701420], and by the National Institute for Health Research (NIHR) Biomedical Research Centre for Mental Health at South London and Maudsley NHS Foundation Trust and Institute of Psychiatry, King's College London. The views expressed are those of the authors and not necessarily those of the NHS, the NIHR or the Department of Health. This work was also supported by the German Federal Ministry of Education and Research within the context of the German National Genome Research Network (NGFN-2 and NGFN-plus). These funders had no role in study design, data collection and analysis, decision to publish, or preparation of the manuscript. GlaxoSmithKline funded the collection of the DeNt cohort of depression cases, the genotyping of all RADIANT cases (with the MRC), and both the collection and genotyping of the GSK-Munich cohort of depression cases. The GENDEP study was funded by a European Commission Framework 6 grant, EC Contract Ref.: LSHB-CT-2003-503428. Dr. Uher is supported by the Canada Research Chairs program (<http://www.chairs-chaire.gc.ca/>).

REFERENCES

- American Psychiatric Association. 2000. Diagnostic and statistical manual of mental disorders. Washington, DC: American Psychiatric Association.
- Beautrais AL, Joyce PR, Mulder RT, Fergusson DM, Deavoll BJ, Nightingale SK. 1996. Prevalence and comorbidity of mental disorders in persons making serious suicide attempts: A case-control study. *Am J Psychiatry* 153:1009–1014.
- Beck AT, Ward CH, Mendelson M, Mock J, Erbaugh J. 1961. An inventory for measuring depression. *Arch Gen Psychiatry* 4:561–571.
- Berk M, Dodd S. 2005. Are treatment emergent suicidality and decreased response to antidepressants in younger patients due to bipolar disorder being misdiagnosed as unipolar depression? *Med Hypotheses* 65:39–43.
- Brent DA, Bridge J, Johnson BA, Connolly J. 1996. Suicidal behavior runs in families. A controlled family study of adolescent suicide victims. *Arch Gen Psychiatry* 53:1145–1152.
- Butler AW, Breen G, Tozzi F, Craddock N, Gill M, Korszun A, Maier W, Middleton LT, Mors O, Owen MJ, Perry J, Preisig M, Rice JP, Rietschel M, Jones L, Farmer AE, Lewis CM, McGuffin P. 2010. A genomewide linkage study on suicidality in major depressive disorder confirms evidence for linkage to 2p12. *Am J Med Genet B Neuropsychiatr Genet* 153B:1465–1473.
- Cohen-Woods S, Gaysina D, Craddock N, Farmer A, Gray J, Gunasinghe C, Hoda F, Jones L, Knight J, Korszun A, Owen MJ, Sterne A, Craig IW, McGuffin P. 2009. Depression Case Control (DeCC) Study fails to support involvement of the muscarinic acetylcholine receptor M2 (CHRM2) gene in recurrent major depressive disorder. *Hum Mol Genet* 18:1504–1509.
- Devlin B, Roeder K, Bacanu SA. 2001. Unbiased methods for population-based association studies. *Genet Epidemiol* 21:273–284.
- Dudbridge F. 2013. Power and predictive accuracy of polygenic risk scores. *PLoS Genet* 9:e1003348.
- Dudbridge F, Gusnanto A. 2008. Estimation of significance thresholds for genomewide association scans. *Genet Epidemiol* 32:227–34.
- Egeland JA, Susser JN. 1985. Suicide and family loading for affective disorders. *JAMA* 254:915–918.
- Evangelou E, Ioannidis JP. 2013. Meta-analysis methods for genome-wide association studies and beyond. *Nat Rev Genet* 14:379–389.
- Farmer A, Breen G, Brewster S, Craddock N, Gill M, Korszun A, Maier W, Middleton L, Mors O, Owen MJ, Perry J, Preisig M, Rietschel M, Reich T, Jones L, Jones I, McGuffin P. 2004. The Depression Network (DeNT) Study: Methodology and sociodemographic characteristics of the first 470 affected sibling pairs from a large multi-site linkage genetic study. *BMC Psychiatry* 4:42.
- Freeman B, Smith N, Curtis C, Huckett L, Mill J, Craig IW. 2003. DNA from buccal swabs recruited by mail: Evaluation of storage effects on long-term stability and suitability for multiplex polymerase chain reaction genotyping. *Behav Genet* 33:67–72.
- Galfalvy H, Zalsman G, Huang YY, Murphy L, Rosoklija G, Dwork AJ, Haghghi F, Arango V, Mann JJ. 2013. A pilot genome wide association and gene expression array study of suicide with and without major depression. *World J Biol Psychiatry* 14:574–582.
- Gaysina D, Cohen-Woods S, Chow PC, Martucci L, Schosser A, Ball HA, Tozzi F, Perry J, Muglia P, Craig IW, McGuffin P, Farmer A. 2009. Association of the dystrobrevin binding protein 1 gene (DTNBP1) in a bipolar case-control study (BACCS). *Am J Med Genet B Neuropsychiatr Genet* 150B:836–844.
- Hamilton M. 1960. A rating scale for depression. *J Neurol Neurosurg Psychiatry* 23:56–62.
- Hesselbrock V, Dick D, Hesselbrock M, Foroud T, Schuckit M, Edenberg H, Bucholz K, Kramer J, Reich T, Goate A, Bierut L, Rice JP, Nurnberger Jr. 2004. The search for genetic risk factors associated with suicidal behavior. *Alcohol Clin Exp Res* 28:70S–76S.
- Johnson BA, Brent DA, Bridge J, Connolly J. 1998. The familial aggregation of adolescent suicide attempts. *Acta Psychiatr Scand* 97:18–24.
- Laje G, Allen AS, Akula N, Manji H, John Rush A, McMahon FJ. 2009. Genome-wide association study of suicidal ideation emerging during citalopram treatment of depressed outpatients. *Pharmacogenet Genomics* 19:666–674.
- Lewis CM, Ng MY, Butler AW, Cohen-Woods S, Uher R, Pirlou K, Weale ME, Schosser A, Paredes UM, Rivera M, Craddock N, Owen MJ, Jones L, Jones I, Korszun A, Aitchison KJ, Shi J, Quinn JP, Mackenzie A, Vollenweider P, Waeber G, Heath S, Lathrop M, Muglia P, Barnes MR, Whittaker JC, Tozzi F, Holsboer F, Preisig M, Farmer AE, Breen G, Craig IW, McGuffin P. 2010. Genome-wide association study of major recurrent depression in the U.K. population. *Am J Psychiatry* 167:949–957.
- Lim SS, Vos T, Flaxman AD, Danaei G, Shibuya K, Adair-Rohani H, Amann M, Anderson HR, Andrews KG, Aryee M, Atkinson C, Bacchus LJ, Bahalim AN, Balakrishnan K, Balmes J, Barker-Collo S, Baxter A, Bell ML, Blore JD, Blyth F, Bonner C, Borges G, Bourne R, Boussinesq M, Brauer M, Brooks P, Bruce NG, Brunekreef B, Bryan-Hancock C, Bucello C, Buchbinder R, Bull F, Burnett RT, Byers TE, Calabria B, Carapetis J, Carnahan E, Chafe Z, Charlson F, Chen H, Chen JS, Cheng AT, Child JC, Cohen A, Colson KE, Cowie BC, Darby S, Darling S, Davis A, Degenhardt L, Dentener F, Des Jarlais DC, Devries K, Dherani M, Ding EL, Dorsey ER, Driscoll T, Edmond K, Ali SE, Engell RE, Erwin PJ, Fahimi S, Falder G, Farzadfar F, Ferrari A, Finucane MM, Flaxman S, Fowkes FG, Freedman G, Freeman MK, Gakidou E,

- Ghosh S, Giovannucci E, Gmel G, Graham K, Grainger R, Grant B, Gunnell D, Gutierrez HR, Hall W, Hoek HW, Hogan A, Hosgood HD III, Hoy D, Hu H, Hubbell BJ, Hutchings SJ, Ibeanusi SE, Jacklyn GL, Jasrasaria R, Jonas JB, Kan H, Kanis JA, Kassebaum N, Kawakami N, Khang YH, Khatibzadeh S, Khoo JP, Kok C, Laden F, et al. 2012. A comparative risk assessment of burden of disease and injury attributable to 67 risk factors and risk factor clusters in 21 regions, 1990–2010: A systematic analysis for the Global Burden of Disease Study 2010. *Lancet* 380:2224–2260.
- Major Depressive Disorder Working Group of the Psychiatric Genomics Consortium. 2013. A mega-analysis of genome-wide association studies for major depressive disorder. *Mol Psychiatry* 18:497–511.
- Mann JJ, Waternaux C, Haas GL, Malone KM. 1999. Toward a clinical model of suicidal behavior in psychiatric patients. *Am J Psychiatry* 156:181–189.
- Mcguffin P, Farmer A, Harvey I. 1991. A polydiagnostic application of operational criteria in studies of psychotic illness. Development and reliability of the OPCRIT system. *Arch Gen Psychiatry* 48:764–770.
- Montgomery SA, Asberg M. 1979. A new depression scale designed to be sensitive to change. *Br J Psychiatry* 134:382–389.
- Muglia P, Tozzi F, Galwey NW, Francks C, Upmanyu R, Kong XQ, Antoniadis A, Domenici E, Perry J, Rothen S, Vandeleur CL, Mooser V, Waeber G, Vollenweider P, Preisig M, Lucae S, Muller-Myhsok B, Holsboer F, Middleton LT, Roses AD. 2010. Genome-wide association study of recurrent major depressive disorder in two European case-control cohorts. *Mol Psychiatry* 15:589–601.
- Nagelkerke NJ. 1991. A note on a general definition of the coefficient of determination. *Biometrika* 78:691–692.
- O'Reilly KC, Shumake J, Gonzalez-Lima F, Lane MA, Bailey SJ. 2006. Chronic administration of 13-cis-retinoic acid increases depression-related behavior in mice. *Neuropsychopharmacology* 31:1919–1927.
- Perlis RH, Huang J, Purcell S, Fava M, Rush AJ, Sullivan PF, Hamilton SP, McMahon FJ, Schulze TG, Potash JB, Zandi PP, Willour VL, Penninx BW, Boomsma DI, Vogelzangs N, Middeldorp CM, Rietschel M, Nothen M, Cichon S, Gurling H, Bass N, Mcquillin A, Hamshere M, Craddock N, Sklar P, Smoller JW. 2010. Genome-wide association study of suicide attempts in mood disorder patients. *Am J Psychiatry* 167:1499–1507.
- Perroud N, Uher R, Marusic A, Rietschel M, Mors O, Henigsberg N, Hauser J, Maier W, Souery D, Placentino A, Szczepankiewicz A, Jorgensen L, Strohmaier J, Zobel A, Giovannini C, Elkin A, Gunasinghe C, Gray J, Campbell D, Gupta B, Farmer AE, Mcguffin P, Aitchison KJ. 2009. Suicidal ideation during treatment of depression with escitalopram and nortriptyline in genome-based therapeutic drugs for depression (GENDEP): A clinical trial. *BMC Med* 7:60.
- Perroud N, Uher R, Ng MY, Guipponi M, Hauser J, Henigsberg N, Maier W, Mors O, Gennarelli M, Rietschel M, Souery D, Dernovsek MZ, Stamp AS, Lathrop M, Farmer A, Breen G, Aitchison KJ, Lewis CM, Craig IW, Mcguffin P. 2012. Genome-wide association study of increasing suicidal ideation during antidepressant treatment in the GENDEP project. *Pharmacogenomics* 12:68–77.
- Psychiatric GWAS Consortium Bipolar Disorder Working Group. 2011. Large-scale genome-wide association analysis of bipolar disorder identifies a new susceptibility locus near ODZ4. *Nat Genet* 43:977–983.
- Purcell S, Cherny SS, Sham PC. 2003. Genetic Power Calculator: Design of linkage and association genetic mapping studies of complex traits. *Bioinformatics* 19:149–150.
- Purcell S, Neale B, Todd-Brown K, Thomas L, Ferreira MA, Bender D, Maller J, Sklar P, De Bakker PI, Daly MJ, Sham PC. 2007. PLINK: A tool set for whole-genome association and population-based linkage analyses. *Am J Hum Genet* 81:559–575.
- Purcell SM, Wray NR, Stone JL, Visscher PM, O'donovan MC, Sullivan PF, Sklar P. 2009. Common polygenic variation contributes to risk of schizophrenia and bipolar disorder. *Nature* 460:748–752.
- Qin P. 2011. The impact of psychiatric illness on suicide: Differences by diagnosis of disorders and by sex and age of subjects. *J Psychiatr Res* 45:1445–1452.
- Roy A, Segal NL. 2001. Suicidal behavior in twins: A replication. *J Affect Disord* 66:71–74.
- Schizophrenia Psychiatric Genome-Wide Association Study (GWAS) Consortium. 2011. Genome-wide association study identifies five new schizophrenia loci. *Nat Genet* 43:969–976.
- Schosser A, Butler AW, Ising M, Perroud N, Uher R, Ng MY, Cohen-Woods S, Craddock N, Owen MJ, Korszun A, Jones L, Jones I, Gill M, Rice JP, Maier W, Mors O, Rietschel M, Lucae S, Binder EB, Preisig M, Perry J, Tozzi F, Muglia P, Aitchison KJ, Breen G, Craig IW, Farmer AE, Muller-Myhsok B, Mcguffin P, Lewis CM. 2011. Genomewide association scan of suicidal thoughts and behaviour in major depression. *PLoS ONE* 6:e20690.
- Schulsinger F, Kety SS, Rosenthal D, Wender PH. 1979. In: A family study of suicide. Schou M, Stromgren E, editors. Origin, prevention and treatment of affective disorders. New York, NY: Academic Press. pp 277–287.
- Seemuller F, Severus E, Moller HJ, Riedel M. 2009. Antidepressants and suicidality in younger adults—Is bipolar illness the missing link? *Acta Psychiatr Scand* 119:166 author reply 167.
- Siegenthaler JA, Ashique AM, Zarbalis K, Patterson KP, Hecht JH, Kane MA, Folias AE, Choe Y, May SR, Kume T, Napoli JL, Peterson AS, Pleasure SJ. 2009. Retinoic acid from the meninges regulates cortical neuron generation. *Cell* 139:597–609.
- Tansey KE, Guipponi M, Domenici E, Lewis G, Malafosse A, O'donovan M, Wendland JR, Lewis CM, Mcguffin P, Uher R. 2014. Genetic susceptibility for bipolar disorder and response to antidepressants in major depressive disorder. *Am J Med Genet B Neuropsychiatr Genet* 165:77–83.
- Turecki G. 2001. Suicidal behavior: Is there a genetic predisposition? *Bipolar Disord* 3:335–349.
- Uher R, Perroud N, Ng MY, Hauser J, Henigsberg N, Maier W, Mors O, Placentino A, Rietschel M, Souery D, Zagar T, Czerski PM, Jerman B, Larsen ER, Schulze TG, Zobel A, Cohen-Woods S, Piro K, Butler AW, Muglia P, Barnes MR, Lathrop M, Farmer A, Breen G, Aitchison KJ, Craig I, Lewis CM, Mcguffin P. 2010. Genome-wide pharmacogenetics of antidepressant response in the GENDEP project. *Am J Psychiatry* 167:555–564.
- Voracek M, Loibl LM. 2007. Genetics of suicide: A systematic review of twin studies. *Wien Klin Wochenschr* 119:463–475.
- Willour VL, Seifuddin F, Mahon PB, Jancic D, Pirooznia M, Steele J, Schweizer B, Goes FS, Mondimore FM, Mackinnon DF. Bipolar Genome Study Consortium. Perlis RH, Lee PH, Huang J, Kelsoe JR, Shilling PD, Rietschel M, Nothen M, Cichon S, Gurling H, Purcell S, Smoller JW, Craddock N, Depaulo JR Jr, Schulze TG, McMahon FJ, Zandi PP, Potash JB. 2012. A genome-wide association study of attempted suicide. *Mol Psychiatry* 17:433–444.
- Willour VL, Zandi PP, Badner JA, Steele J, Miao K, Lopez V, Mackinnon DF, Mondimore FM, Schweizer B, Mcinnis MG, Miller EB, Depaulo JR Jr, Gershon ES, McMahon FJ, Potash JB. 2007. Attempted suicide in bipolar disorder pedigrees: Evidence for linkage to 2p12. *Biol Psychiatry* 61:725–727.

Wing JK, Babor T, Brugha T, Burke J, Cooper JE, Giel R, Jablenski A, Regier D, Sartorius N. 1990. SCAN. Schedules for clinical assessment in neuropsychiatry. *Arch Gen Psychiatry* 47:589–593.

World Health Organisation. 1998. *Diagnosis and Clinical Measurement in Psychiatry. A reference manual for SCAN*. Geneva, Switzerland: World Health Organisation.

World Health Organisation. 2005. *Suicide Prevention (SUPRE)* [Online]. Available: http://www.who.int/mental_health/prevention/suicide [Accessed January 4, 2012.]

Wray NR, Goddard ME, Visscher PM. 2007. Prediction of individual genetic risk to disease from genome-wide association studies. *Genome Res* 17:1520–1528.

SUPPORTING INFORMATION

Additional Supporting Information may be found in the online version of this article at the publisher's web-site.