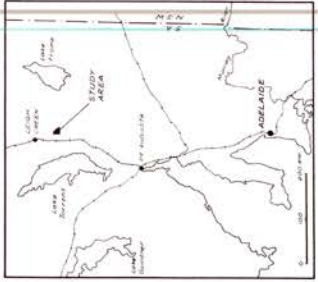
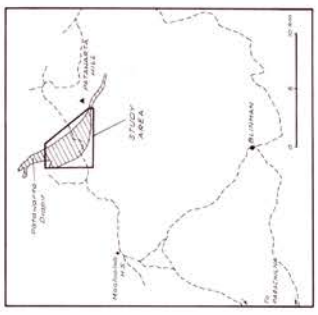
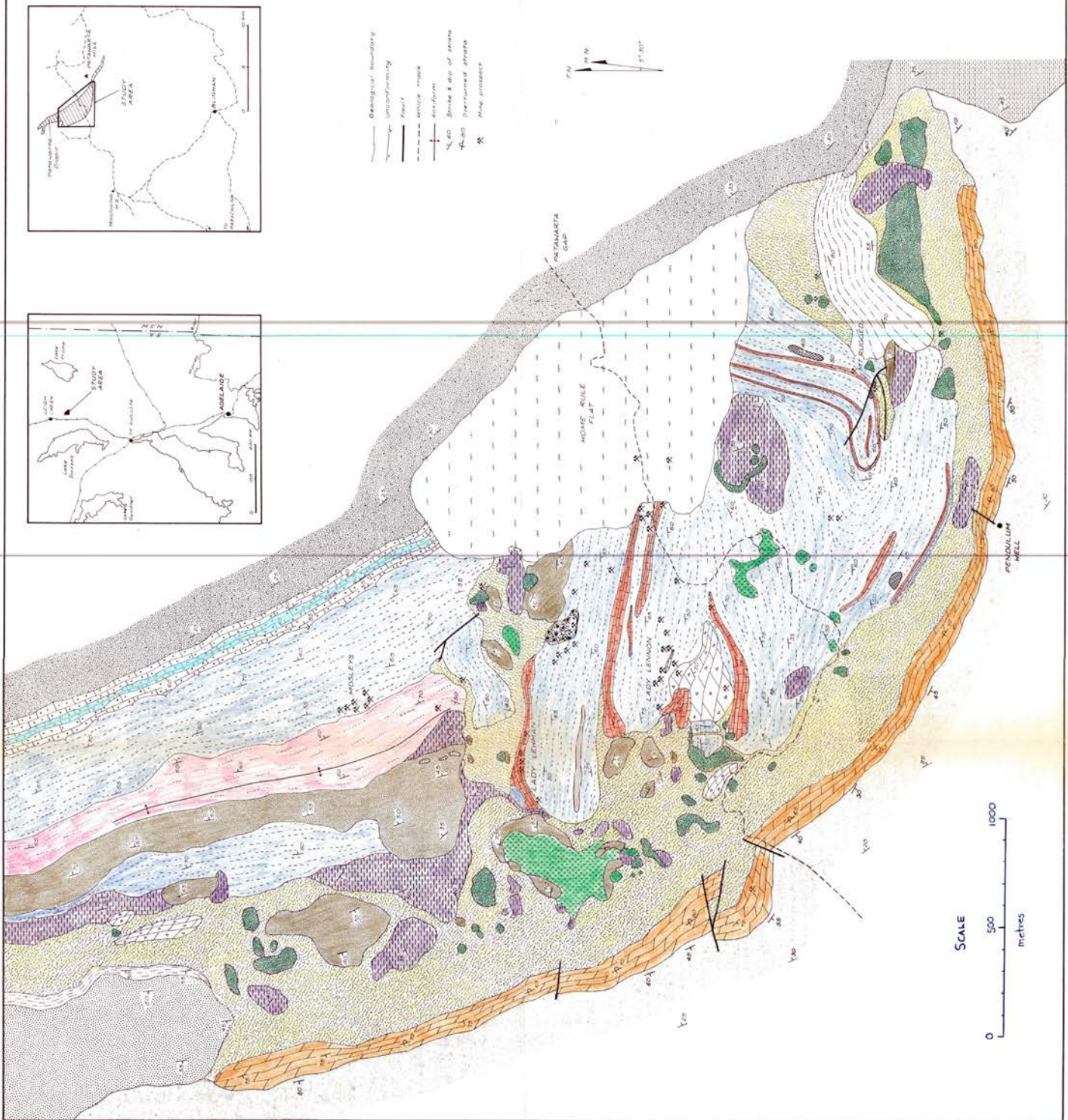


PATAWARTA DIAPIR INTERPRETIVE GEOLOGY

SCALE 1:10000 (approx.)
D. HALL, 1984



CENOZOIC

alluvium, outwash gravels

PROTEROZOIC

MILPENA GROUP

ROUND QUARTZITE (BOWEN'S SUBGROUP)
Cross bedded, ripple marked, red sandstone and siltstones

ANDRUSIA SUBGROUP
Green siliceous shales, hummocky cross stratification
Grey sandy limestone

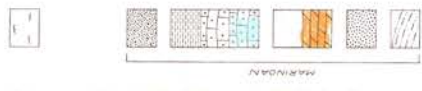
Grey limestone containing Clonore-type stromatolites

BALRUBEN SUBGROUP
Red, brown sandstone, calcareous shales

NEW BUCHANAN
Siltstone, shales containing Clonore-type stromatolites

M. & C. SANDSTONE SUBGROUP
Cross bedded, ripple marked, sandstone and siltstones

MILPENA SUBGROUP
Shales, non-carbonate siltstone



CALLANNA BEDS (T. LIDERT)

Bedded heavy mineral, immature sandstones and siltstones, ripple marked and partly subhorizontal

Grey, siliceous or sandy mineral, immature sandstone and siltstone, ripple marked, hummocky and partly bedded

Shale, siliceous shales and siltstones containing ripple marks

Highly bedded shale, strongly bedded limestone with fairly bedded calcareous shales and siltstones

Weakly bedded, dolomite

Massive siliceous sh. & silt. rock

Siltstone, non-carbonate shales

Siltstone, calcareous red shales

Siltstone, unglauconiferous, in situ dark green

Weakly bedded shales and siltstones



LINEARIN AGE

arenaceous shales

Siltstone, dark green fine grained

Low grade calcareous meta-siltstone/siltstone



Geological boundary
Fault
Unconformity
Well
Wharf
Stream
N. 50° Strike & dip of strike
N. 60° Structural strike
X Map prospect

