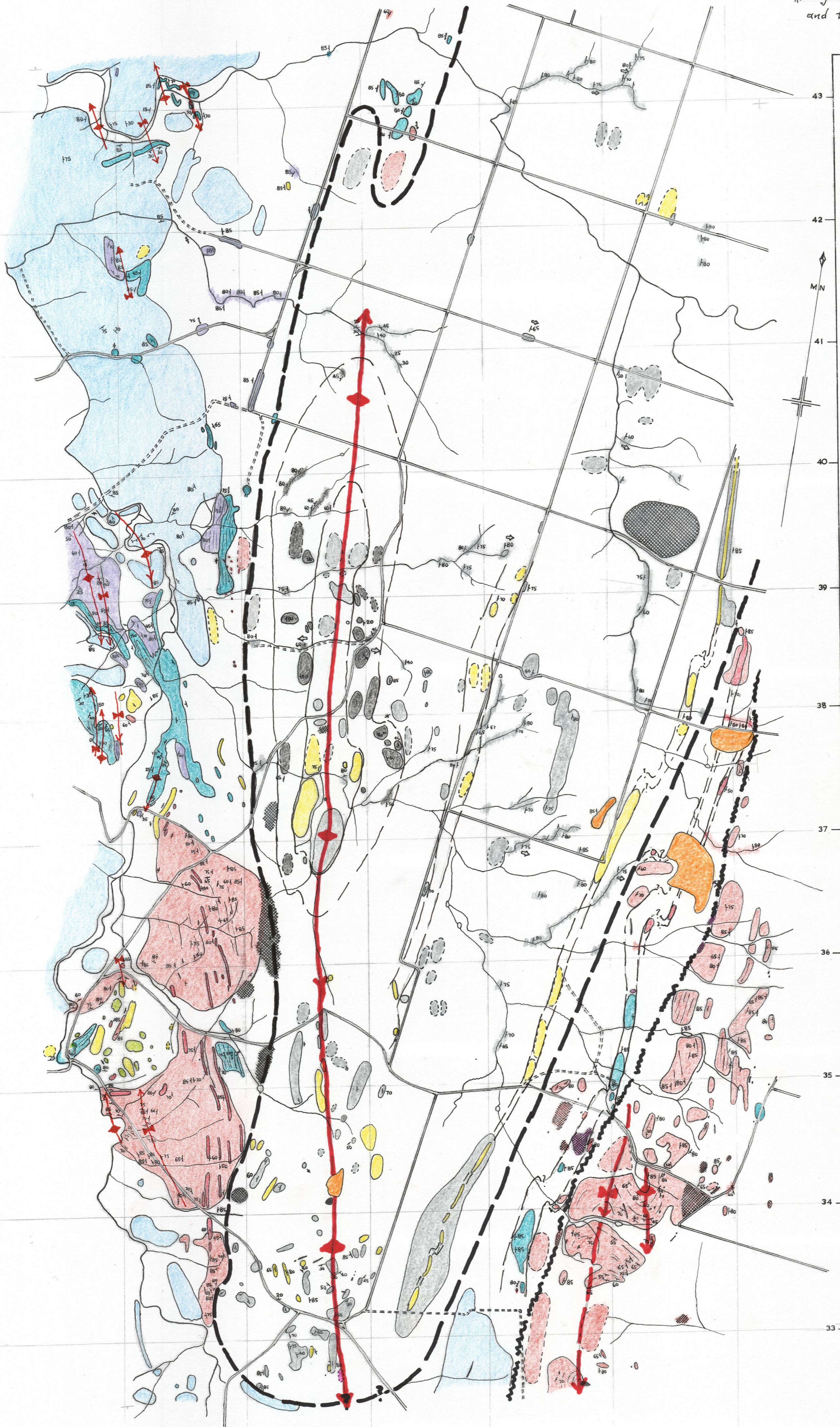


# GEOLOGY EAST OF ANGASTON

## FACT MAP PLUS SUPERIMPOSED\* INTERPRETATION

\* Originally depicted on Mylar overlay (lost from original thesis).  
and transferred to this sheet, 2017, with negligible changes.

*Revised 5.10.2017*



### LEGEND

#### TERTIARY-RECENT

Kunkar & silicified zone related to bedrock.

White clays of pallid zone; ferruginous capping.

#### ROCK UNIT 2

Silty, sandy laminated schists with andalusite & staurolite. Interbeds of quartzite & lenses of marble.

Marbles, scapolite marbles, amphibolite marbles interbedded or interfingering with: quartzites, calcareous quartzite, micaceous schist, thinly interbedded marbles & calc-silicates.

#### ROCK UNIT 1

Scapolite spotted, grey, silty or sandy schists. Calcareous horizons. Interbeds of quartzite & arkose. Quartzite near top.

Dark grey, silty schists & siltstones; finely laminated. Calcareous, pyritic, carbonaceous in part.

Scapolite spotted, grey, silty or sandy schists. Calcareous horizons. Interbeds of quartzite.

#### INTRUSIVE ROCKS

Metadolerites.

Gossan.

Quartz.

Limit of outcrop.

'Floor' related to bedrock.

Creek outcrop.

Bedding.

Foliation.

Sedimentary facing (current bedding).

Crush zone.

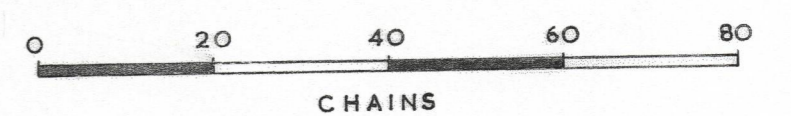
Probable faulted unconformity

Probable fault

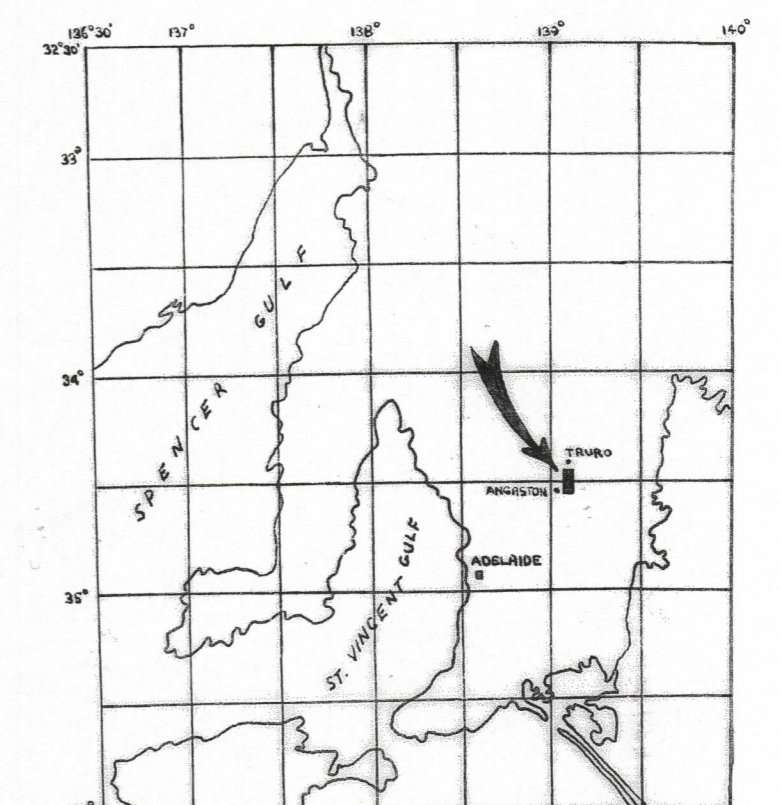
Antiform & general plunge sense

Synform & general plunge sense

#### SCALE



#### LOCALITY



Main map ordinates from Toro & Cambrai  
1:63,360 topographic sheets.

*Revised 5.10.2017*