

Finder:

Please return to

R. G. Cross

C. H. M. P. Society
Adelaide

Cawthorne
Limited

Rhapsody in G

MANUSCRIPT

MUSIC BOOK



For everything Musical "Adelaide's
Music Centre" - 15 Rundle Street

Rhapsody in "G"
for Violin, Cello & Piano.

by R.C. Cross.

(To Myra and Dan Collins.)

Vol. *Allegro*

Cello *mp*

Piano *p*

OSSIA.

This image shows a page of handwritten musical notation on aged, yellowed paper. The score is written in ink and consists of several systems of staves. The top system includes a vocal line and a piano accompaniment. The middle system features a grand staff with piano and dynamic markings such as *p* and *mf*. The bottom system continues the piano accompaniment with various notes and rests. The paper shows signs of age, including foxing and staining, particularly along the left edge.

Handwritten musical notation for the first system, consisting of two staves. The top staff is in treble clef and the bottom staff is in bass clef. Both staves have a key signature of one sharp (F#) and a common time signature (C). The notation includes various note values, rests, and accidentals.

Handwritten musical notation for the second system, consisting of two staves. The top staff is in treble clef and the bottom staff is in bass clef. Both staves have a key signature of one sharp (F#) and a common time signature (C). The notation includes various note values, rests, and accidentals.

Handwritten musical notation for the third system, consisting of two staves. The top staff is in treble clef and the bottom staff is in bass clef. Both staves have a key signature of one sharp (F#) and a common time signature (C). The notation includes various note values, rests, and accidentals.

Handwritten musical notation for the fourth system, consisting of two staves. The top staff is in treble clef and the bottom staff is in bass clef. Both staves have a key signature of one sharp (F#) and a common time signature (C). The notation includes various note values, rests, and accidentals.

Handwritten musical notation for the fifth system, consisting of two staves. The top staff is in treble clef and the bottom staff is in bass clef. Both staves have a key signature of one sharp (F#) and a common time signature (C). The notation includes various note values, rests, and accidentals.

Handwritten musical notation for the sixth system, consisting of two staves. The top staff is in treble clef and the bottom staff is in bass clef. Both staves have a key signature of one sharp (F#) and a common time signature (C). The notation includes various note values, rests, and accidentals.

Handwritten musical notation for the first system, consisting of a treble staff and a bass staff. The treble staff contains a sequence of notes, including a half note G4, a quarter note A4, a quarter note B4, a quarter note C5, a quarter note D5, a quarter note E5, a quarter note F5, and a quarter note G5. The bass staff contains a sequence of notes, including a half note G3, a quarter note A3, a quarter note B3, a quarter note C4, a quarter note D4, a quarter note E4, a quarter note F4, and a quarter note G4.

Handwritten musical notation for the second system, including a grand staff with piano (p) and LH markings. The system consists of a treble staff and a bass staff. The treble staff contains a sequence of notes, including a half note G4, a quarter note A4, a quarter note B4, a quarter note C5, a quarter note D5, a quarter note E5, a quarter note F5, and a quarter note G5. The bass staff contains a sequence of notes, including a half note G3, a quarter note A3, a quarter note B3, a quarter note C4, a quarter note D4, a quarter note E4, a quarter note F4, and a quarter note G4. The marking "LH." is written above the treble staff.

Handwritten musical notation for the third system, featuring a treble and bass staff with notes and rests. The treble staff contains a sequence of notes, including a half note G4, a quarter note A4, a quarter note B4, a quarter note C5, a quarter note D5, a quarter note E5, a quarter note F5, and a quarter note G5. The bass staff contains a sequence of notes, including a half note G3, a quarter note A3, a quarter note B3, a quarter note C4, a quarter note D4, a quarter note E4, a quarter note F4, and a quarter note G4.

Handwritten musical notation for the fourth system, featuring a grand staff with piano (p) and LH markings. The system consists of a treble staff and a bass staff. The treble staff contains a sequence of notes, including a half note G4, a quarter note A4, a quarter note B4, a quarter note C5, a quarter note D5, a quarter note E5, a quarter note F5, and a quarter note G5. The bass staff contains a sequence of notes, including a half note G3, a quarter note A3, a quarter note B3, a quarter note C4, a quarter note D4, a quarter note E4, a quarter note F4, and a quarter note G4. The marking "LH." is written above the treble staff.

Handwritten musical notation for the fifth system, featuring a treble and bass staff with notes and rests. The treble staff contains a sequence of notes, including a half note G4, a quarter note A4, a quarter note B4, a quarter note C5, a quarter note D5, a quarter note E5, a quarter note F5, and a quarter note G5. The bass staff contains a sequence of notes, including a half note G3, a quarter note A3, a quarter note B3, a quarter note C4, a quarter note D4, a quarter note E4, a quarter note F4, and a quarter note G4.

Handwritten musical notation for the sixth system, including a grand staff with piano (p) and LH markings. The system consists of a treble staff and a bass staff. The treble staff contains a sequence of notes, including a half note G4, a quarter note A4, a quarter note B4, a quarter note C5, a quarter note D5, a quarter note E5, a quarter note F5, and a quarter note G5. The bass staff contains a sequence of notes, including a half note G3, a quarter note A3, a quarter note B3, a quarter note C4, a quarter note D4, a quarter note E4, a quarter note F4, and a quarter note G4. The marking "LH." is written above the treble staff.

8va

p. LH. 8va Bassa

poco meno mosso

L.H. Piano 8va Bassa

al tempo e staccato

Handwritten musical score for the first system. It consists of two staves: a treble clef staff and a bass clef staff. The key signature is one sharp (F#). The treble staff begins with a treble clef, a sharp sign, and a fermata over a quarter note. The bass staff begins with a bass clef, a sharp sign, and a fermata over a quarter note. The music continues with various notes, rests, and accidentals.

Handwritten musical score for the second system. It consists of two staves: a treble clef staff and a bass clef staff. The key signature is one sharp (F#). The time signature is 2/4. The treble staff begins with a treble clef, a sharp sign, and a fermata over a quarter note. The bass staff begins with a bass clef, a sharp sign, and a fermata over a quarter note. The music continues with various notes, rests, and accidentals.

Handwritten musical score for the third system. It consists of two staves: a treble clef staff and a bass clef staff. The key signature is one sharp (F#). The time signature is 2/4. The word "MERRILY" is written above the treble staff. The music continues with various notes, rests, and accidentals.

Handwritten musical score for the fourth system. It consists of two staves: a treble clef staff and a bass clef staff. The key signature is one sharp (F#). The music continues with various notes, rests, and accidentals.

Handwritten musical score for the fifth system. It consists of two staves: a treble clef staff and a bass clef staff. The key signature is one sharp (F#). The music continues with various notes, rests, and accidentals, including a large melodic line in the treble staff.

Handwritten musical notation for the first system, consisting of two staves with treble and bass clefs, a key signature of one sharp (F#), and a common time signature (C). The notation includes various note values and rests.

Handwritten musical notation for the second system, consisting of two staves with treble and bass clefs, a key signature of one sharp (F#), and a common time signature (C). The notation includes various note values and rests.

Handwritten musical notation for the third system, consisting of two staves with treble and bass clefs, a key signature of one sharp (F#), and a common time signature (C). The notation includes various note values and rests.

Handwritten musical notation for the fourth system, consisting of two staves with treble and bass clefs, a key signature of one sharp (F#), and a common time signature (C). The notation includes various note values and rests.

Handwritten musical notation for the fifth system, consisting of two staves with treble and bass clefs, a key signature of one sharp (F#), and a common time signature (C). The notation includes various note values and rests.

Handwritten musical notation for the sixth system, consisting of two staves with treble and bass clefs, a key signature of one sharp (F#), and a common time signature (C). The notation includes various note values and rests.

This image shows a page of handwritten musical notation on aged, yellowed paper. The score is organized into several systems, each consisting of multiple staves. The notation includes treble and bass clefs, a key signature of one sharp (F#), and various musical symbols such as notes, rests, and accidentals. The first system at the top has two empty staves. The second system features a grand staff with a treble clef and a bass clef, containing complex melodic and harmonic lines. The third system has two staves with sparse notation. The fourth system is a grand staff with more detailed notation, including some handwritten annotations like '2' and '4'. The fifth system consists of two staves with long, horizontal notes. The sixth system is a grand staff with the instruction 'Bva..... (loco)' written above the treble staff. The seventh system is a grand staff with further notation and the instruction 'Bva.....' above the treble staff. The handwriting is in dark ink, and the paper shows signs of age and wear.

Handwritten musical notation on two staves. The top staff is in treble clef with a key signature of one sharp (F#) and a common time signature (C). It contains a melodic line with various accidentals (sharps, flats, naturals) and some ties. The bottom staff is in bass clef with the same key signature and time signature, containing a bass line with similar accidentals and a circled measure at the beginning.

Handwritten musical notation for a piano accompaniment on two staves. The top staff is in treble clef with a key signature of one sharp (F#). It features chords and some melodic fragments. The bottom staff is in bass clef with the same key signature, showing a bass line with chords and some melodic lines.

Handwritten musical notation on two staves. The top staff is in treble clef with a key signature of one sharp (F#). It includes a melodic line with a dotted line and the word "Sua..." written above it. The bottom staff is in bass clef with the same key signature, containing a bass line with various notes and accidentals.

Handwritten musical notation for a piano accompaniment on two staves. The top staff is in treble clef with a key signature of one sharp (F#). It contains several chords. The bottom staff is in bass clef with the same key signature, showing a bass line with chords and some melodic lines.

Handwritten musical notation on a single staff in treble clef with a key signature of one sharp (F#). It contains a melodic line with various notes and accidentals.

Handwritten musical notation on a single staff in treble clef with a key signature of one sharp (F#). It contains a melodic line with various notes and accidentals, including a circled measure at the beginning.

Handwritten musical notation for a piano accompaniment on two staves. The top staff is in treble clef with a key signature of one sharp (F#). It features chords and some melodic fragments. The bottom staff is in bass clef with the same key signature, showing a bass line with chords and some melodic lines.

B

Handwritten musical notation, first system. Treble clef, key signature of one sharp (F#), and a 3/4 time signature. The notation includes a series of eighth notes in the first two measures, followed by a half note and a quarter note in the third measure, and a half note with a flat in the fourth measure. The bass clef part shows a similar rhythmic pattern with a flat in the fourth measure.

Handwritten musical notation, second system. Treble clef, key signature of one sharp (F#), and a 3/4 time signature. The notation features a melodic line with a slur over the first two measures, followed by a half note and a quarter note in the third measure, and a half note with a flat in the fourth measure. The bass clef part shows a similar rhythmic pattern with a flat in the fourth measure.

Handwritten musical notation, third system. Treble clef, key signature of one sharp (F#), and a 3/4 time signature. The notation shows a half note in the first measure, followed by a quarter rest in the second measure, and a half note with a flat in the third measure. The bass clef part shows a similar rhythmic pattern with a flat in the third measure.

Handwritten musical notation, fourth system. Treble clef, key signature of one sharp (F#), and a 3/4 time signature. The notation includes a melodic line with a slur over the first two measures, followed by a half note and a quarter note in the third measure, and a half note with a flat in the fourth measure. The bass clef part shows a similar rhythmic pattern with a flat in the fourth measure.

Handwritten musical notation, fifth system. Treble clef, key signature of one sharp (F#), and a 3/4 time signature. The notation shows a half note in the first measure, followed by a quarter rest in the second measure, and a half note with a flat in the third measure. The bass clef part shows a similar rhythmic pattern with a flat in the third measure.

Handwritten musical notation, sixth system. Treble clef, key signature of one sharp (F#), and a 3/4 time signature. The notation features a melodic line with a slur over the first two measures, followed by a half note and a quarter note in the third measure, and a half note with a flat in the fourth measure. The bass clef part shows a similar rhythmic pattern with a flat in the fourth measure.

*Presto
e molto cresc*

Handwritten musical notation for the first system, consisting of two staves. The top staff is in treble clef with a key signature of one sharp (F#) and a 4/4 time signature. The bottom staff is in bass clef with the same key signature and time signature. The music features a melodic line with various rhythmic values and some triplet markings.

*presto
cresc. molt.
e sva*

Handwritten musical notation for the second system, consisting of four staves. The top two staves are in treble clef, and the bottom two are in bass clef. The key signature remains one sharp (F#) and the time signature is 4/4. This system includes a complex piano accompaniment with many beamed notes and triplets. A dashed line labeled 'Sva' spans across the staves.

Broadly

Handwritten musical notation for the third system, consisting of four staves. The top two staves are in treble clef, and the bottom two are in bass clef. The key signature is one sharp (F#) and the time signature is 4/4. The music features long, sustained notes in the upper staves and a more active bass line.

Slack

Handwritten musical notation for the fourth system, consisting of four staves. The top two staves are in treble clef, and the bottom two are in bass clef. The key signature is one sharp (F#) and the time signature is 4/4. The music includes a section with a 'Sva' marking and a 'Balt.' marking. The notation is dense with many notes and rests.

Handwritten musical score for the first system. It consists of two vocal staves (treble and bass clef) and a piano accompaniment (grand staff). The key signature is one sharp (F#). The piano part features a complex texture with many sixteenth notes and rests, and includes dynamic markings such as *pp*, *ppp*, and *ppp*. A handwritten annotation "Bva..." is present above the piano part.

Handwritten musical score for the second system. It continues the vocal and piano parts from the first system. The piano accompaniment continues with similar rhythmic patterns and includes dynamic markings like *pp* and *ppp*.

Handwritten musical score for the third system. The piano part features a prominent crescendo, indicated by a long wedge-shaped hairpin. A handwritten instruction "Accell e molto Cresc." is written above the piano part.

Handwritten musical score for the fourth system, which appears to be a piano solo section. It features a piano accompaniment with a large crescendo hairpin and a final chord. The piano part includes dynamic markings like *pp* and *ppp*.

Handwritten musical score for a piano piece. The score is written on a single sheet of paper with a yellowish tint. It features four staves. The top two staves are in treble clef, and the bottom two are in bass clef. The key signature is one sharp (F#). The time signature starts as 3/4 and changes to 4/4. The score includes various musical notations such as slurs, accents, and dynamic markings. A section of the score is highlighted with a blue vertical line on the right side. The word "Broaden" is written in cursive above the second staff in the 4/4 section. The word "Pizz" (pizzicato) is written above the first and second staves in the 4/4 section. The score ends with a double bar line and a fermata.

Cresc
Sep B
to A
Pizz

Andante

¹CELLO

Handwritten musical notation for a cello part. It begins with a treble clef, a 4/4 time signature, and a dynamic marking of *p*. The notation consists of a single melodic line with several notes and rests.

Piano

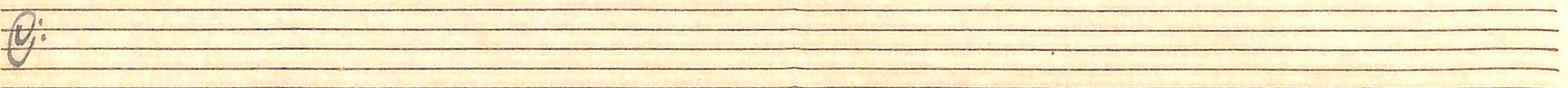
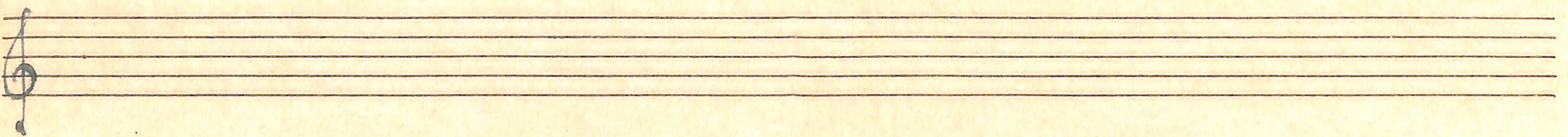
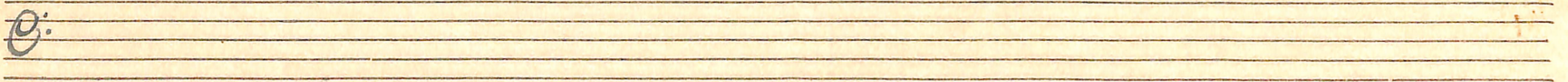
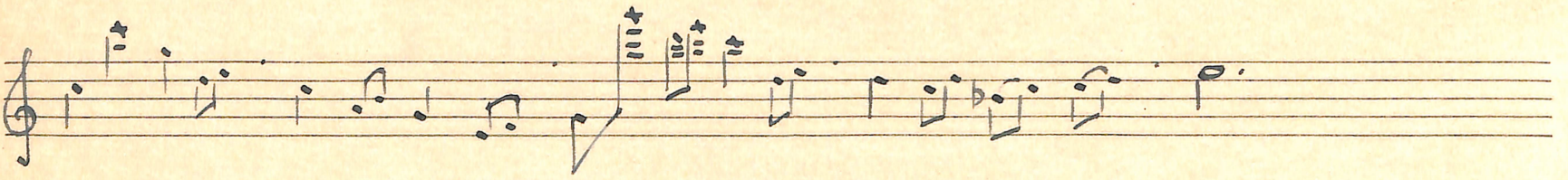
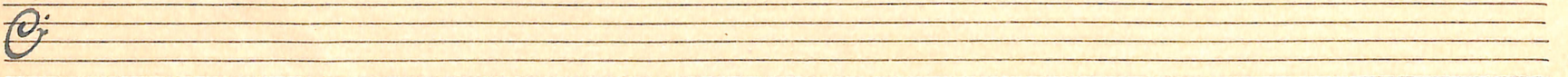
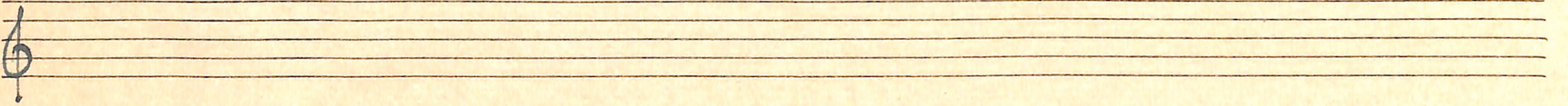
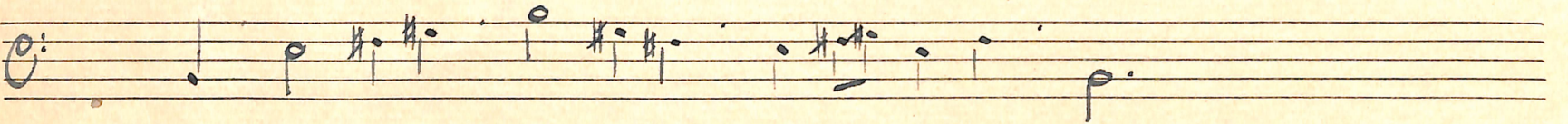
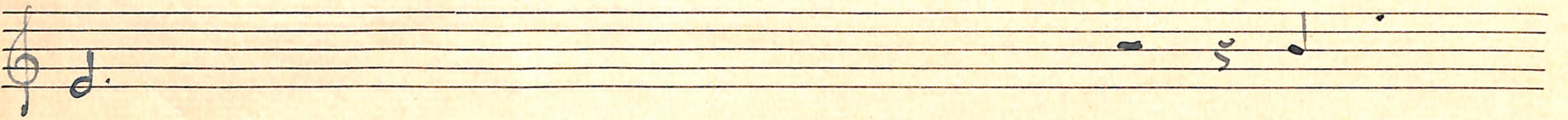
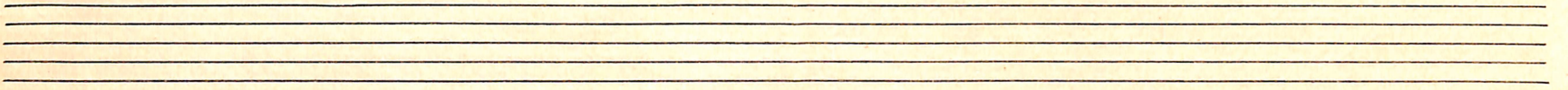
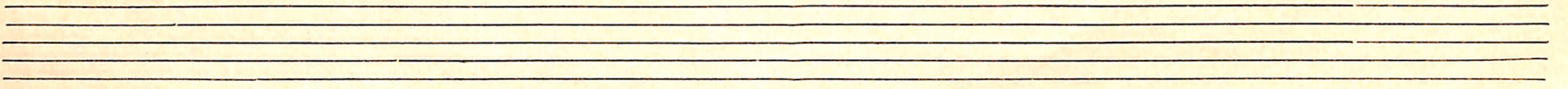
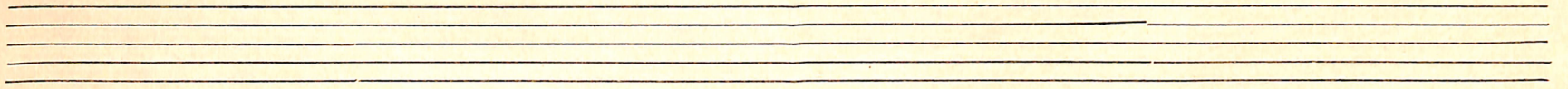
Handwritten musical notation for a piano part. It shows a treble clef and a common time signature (C). The notation is mostly blank, with a few notes visible on the right side of the staff.

Handwritten musical notation for a piano part, showing a treble clef and a common time signature. The notation consists of a single melodic line with several notes and rests.

Handwritten musical notation for a piano part, showing a bass clef and a common time signature. The notation is mostly blank.

Handwritten musical notation for a piano part, showing a treble clef and a common time signature. The notation consists of a single melodic line with several notes and rests.

Handwritten musical notation for a piano part, showing a bass clef and a common time signature. The notation is mostly blank.



Franquillo

Sea Idyll Port Lincoln.

The first system of handwritten musical notation consists of two staves. The upper staff is in treble clef with a 6/8 time signature. It begins with a key signature of two sharps (F# and C#) and contains a melodic line with eighth and sixteenth notes, some beamed together, and a long slur over the first four measures. The lower staff is in bass clef with the same key signature and contains a bass line with eighth notes and a long slur over the first four measures. The word "Pia..." is written above the fifth measure of the upper staff. The system concludes with a double bar line and a repeat sign.

The second system consists of two empty musical staves. The upper staff begins with a key signature of two sharps (F# and C#).

The third system consists of two empty musical staves.

The fourth system consists of two empty musical staves.

The fifth system consists of two empty musical staves.

The sixth system consists of two empty musical staves.

The seventh system consists of two empty musical staves.

The eighth system consists of two empty musical staves.

The ninth system consists of two empty musical staves.

The tenth system consists of two empty musical staves.

The eleventh system consists of two empty musical staves.