

RESEARCH ARTICLE

Identification of a New Marine Bacterial Strain SD8 and Optimization of Its Culture Conditions for Producing Alkaline Protease

Hongxia Cui^{1,2*}, Muyang Yang¹, Liping Wang³, Cory J. Xian^{3*}

1 College of Environmental and Chemical Engineering, Yanshan University, Qinhuangdao, 066004, China, **2** Hebei Province Key Laboratory of Applied Chemistry, Qinhuangdao, 066004, China, **3** Sansom Institute for Health Research, School of Pharmacy and Medical Sciences, University of South Australia, Adelaide, 5001, Australia

* cory.xian@unisa.edu.au (CJX); hxcui@ysu.edu.cn (HC)



OPEN ACCESS

Citation: Cui H, Yang M, Wang L, Xian CJ (2015) Identification of a New Marine Bacterial Strain SD8 and Optimization of Its Culture Conditions for Producing Alkaline Protease. PLoS ONE 10(12): e0146067. doi:10.1371/journal.pone.0146067

Editor: Adam Lesner, University of Gdansk, POLAND

Received: September 23, 2015

Accepted: December 11, 2015

Published: December 30, 2015

Copyright: © 2015 Cui et al. This is an open access article distributed under the terms of the [Creative Commons Attribution License](https://creativecommons.org/licenses/by/4.0/), which permits unrestricted use, distribution, and reproduction in any medium, provided the original author and source are credited.

Data Availability Statement: Data are available from NCBI GenBank (accession number KM668099).

Funding: This study is financially supported by Natural Science Foundation of Hebei Province (D2014203102 to HC) and Ministry of Education Specialized Research Fund for the Doctoral Program of Higher Education (20131333120010 to HC). LW is supported by Australian National Health and Medical Research Council (NHMRC) Postgraduate Research Scholarship, and CJX is supported by NHMRC Senior Research Fellowship. The funders had no role in study design, data collection and analysis, decision to publish, or preparation of the manuscript.

Abstract

While much attention has been given to marine microorganisms for production of enzymes, which in general are relatively more stable and active compared to those from plants and animals, studies on alkaline protease production from marine microorganisms have been very limited. In the present study, the alkaline protease producing marine bacterial strain SD8 isolated from sea muds in the Geziwo Qinhuangdao sea area of China was characterized and its optimal culture conditions were investigated. Strain SD8 was initially classified to belong to genus *Pseudomonas* by morphological, physiological and biochemical characterizations, and then through 16S rDNA sequence it was identified to be likely *Pseudomonas hibiscicola*. In addition, the culture mediums, carbon sources and culture conditions of strain SD8 were optimized for maximum production of alkaline protease. Optimum enzyme production (236U/mL when cultured bacteria being at 0.75 mg dry weight/mL fermentation broth) was obtained when the isolate at a 3% inoculum size was grown in LB medium at 20 mL medium/100mL Erlenmeyer flask for 48h culture at 30°C with an initial of pH 7.5. This was the first report of strain *Pseudomonas hibiscicola* secreting alkaline protease, and the data for its optimal cultural conditions for alkaline protease production has laid a foundation for future exploration for the potential use of SD8 strain for alkaline protease production.

Introduction

Over the years, researchers around the world have been interested in producing biological products particularly enzymes owing to their wide ranges of physiological, analytical and industrial applications. Among all biological resources for enzyme production, microorganisms are especially important because of their extensive biochemical diversity, possibility of mass culture and ease of genetic operations. So far, microorganisms are now known to play a key role in the production of both extracellular and intracellular enzymes in the commercial scale, and more than 3000 different microbial extracellular enzymes have been reported [1].

Competing Interests: The authors have declared that no competing interests exist.

Among all the enzymes, proteases have occupied an important place as they were the first to be produced in bulk, and now they constitute about two-thirds of total enzymes used today [2], and the proteases are the main enzyme produced by microbial sources. They are used in a wide range applications, including in food, meat and leather processing industries as well as pharmaceutical industries. In particular, microbial alkaline proteases have dominated the worldwide enzyme market, accounting for a 67% share of the detergent industry [3,4].

A wide range of microorganisms was found to produce alkaline protease, including bacteria, molds, yeasts and mammalian tissues [5,6]. However, bacteria were preferred as they grow rapidly, need less space, could be easily maintained and were accessible for genetic operations. Species of *Bacillus*, *Pseudomonas*, *Halominas*, *Arthrobacter* and *Serratia* were the important protease producing bacteria. Among all bacterial species, bacilli played an important role in production of alkaline protease owing to their chemoorganotrophic characteristics and their abilities to secrete a high level of alkaline protease. In particular, more and more attention had been given to marine microorganisms of a wide range of habitats as enzymes derived from them were found relatively more stable and active than those derived from plants or animals [7, 8] and would have more advantages than traditional enzymes [9]. While alkaline (serine) proteases were found active over broad ranges of temperatures (35–80°C) and pH (7–12) [10], alkaline protease produced by marine bacteria had significant activity and stability at high pH and temperatures [11, 12].

Production of extracellular proteases of microorganisms was known to be largely influenced by the presence of easily metabolizable sugars (such as glucose) and medium components [13]. In addition, several other factors such as aeration, inoculum density, pH, temperature and incubation time also could affect the amount of protease produced [14–16]. However, the studies on alkaline protease production from marine microorganisms have been very limited [17]. In our recent study, one type of microorganism producing alkaline protease was isolated from sea muds of the Qinhuangdao sea area in China [18]. In the current study, we carried out further morphological, physiological and biochemical characterization, as well as 16S rDNA sequence analysis of this isolate SD8. In addition, we optimized its culture parameters for enhanced production of stable alkaline protease which was previously found to be stable in organic solvent and sodium dodecyl sulfonate (SDS) [18].

Materials and Methods

This in vitro study did not involve humans, human data or animals, and thus there were no ethics or consent requirements for this study. As small samples of sea muds did not damage marine environment and wildlife and did not involve endangered or protected species, specific permission was not required for this work.

Reagents and fermentation media

Casein used for the protease assay was bought from Sigma (St. Louis, MO, USA). The other chemicals used in the study were of analytical grade commercially available in China. All the experiments were carried out independently in triplicates and repeated twice.

The inoculum was prepared by adding one loop full of pure culture into 15 ml of sterile LB medium and incubated at 37°C on a rotary shaker (150rpm) for 24h. A 5% inoculum size was added to various protease producing culture media: (1) LB medium containing (g/L): peptone, 10; yeast extract, 5; NaCl, 10; pH 8.5; (2) starch medium containing (g/L): soluble starch, 20; beef extract, 5; peptone, 10; NaCl, 5; pH 8.5; (3) beef extract-peptone medium containing (g/L): peptone, 10; beef extract, 3; NaCl, 5; pH 8.5; and (4) glucose medium containing (g/L): peptone, 5; glucose, 5; K₂HPO₄, 2, pH 8.5. After incubation for 48 h at 37°C with shaking (150rpm), the

cultures were harvested by centrifugation at 10000 rpm for 10 min at 4°C. The liquid supernatants were used as crude enzyme samples for measuring protease activity.

Morphological, physiological, and biochemical characterization of the SD8 isolate

The bacterial strain SD8 known to produce an alkaline protease that was stable in SDS and organic stable used in the present study, which was isolated from sea muds of the sea area of Qinhuangdao, China [18]. This had been compared and identified tentatively as *Pseudomonas hibiscicola* [19] according to Bergey's Manual of Determinative Bacteriology [20]. Morphological examination was carried out either on nutrient agar or in nutrient broth plus aged sea water, followed by Gram staining. Physiological and biochemical tests were carried out as described previously [21].

Further characterization was done on the basis of 16S rDNA sequencing as follows. The total genomic DNA of the strain SD8 was separated and purified by using the method described by Redburn and Pate [22]. The 16S rDNA of the isolate was amplified using the universal primers P1 (5'-AGAGTTTGATCATCCTGGCTCAG-3') and P2 (5'-ACGGCTACCTTGTTACGACTT3') [23]. The amplification was done by initial denaturation at 94°C for 3 min followed by 35 cycles of 94°C for 30s, 51°C for 30s, 72°C for 3 min and final extension at 72°C for 10 min. The PCR products were sequenced by Beijing Sun Biotech Co. Ltd (Beijing, China).

Sequence alignments of the strain SD8 were achieved with the NCBI's BLAST program. All the sequences of 16S rDNA were aligned using the multiple sequence alignment program CLUSTAL-W (Dublin, Ireland). Phylogenetic and molecular evolutionary analyses were processed through the molecular evolutionary genetics analysis software MEGA 5.05 (Tempe, Arizona, USA).

Experimental culture conditions on protease production

The current study has investigated optimal culture conditions for alkaline protease production from the SD8 isolate. To measure the effect of carbon sources on enzyme production, different carbon sources (sucrose, soluble starch, maltose, lactose, glycerin and glucose) were examined in the enzyme production media [24]. To examine the time kinetics of enzyme secretion, after the strain SD8 was inoculated in protease-producing LB medium and incubated at 37°C under shaking conditions (150 rpm), culture samples were withdrawn aseptically every 6 h and enzyme activity was monitored as described below. The growth curve of the strain SD8 was also investigated in LB medium at 37°C under shaking conditions (150 rpm). Optical density (OD₆₀₀) was determined every 6 h. In order to investigate the influence of pH on protease production, the isolate was cultivated in LB medium at varying pH values (5.5–10.5, with the interval of increase of 1.0), and protease activity was quantified after incubation of 48 h at 37°C under shaking conditions at 150 rpm. To observe the effect of temperature on the protease production of the bacterial strain, 30°C and 37°C were selected for the culture. In addition, to investigate the effect of dissolved oxygen levels on the alkaline protease production, 10, 15, 20, 25, and 30 mL of culture liquid were enclosed to 100mL Erlenmeyer flasks, respectively, and alkaline protease activities were quantified after incubation with the optimal conditions revealed. Finally, in order to investigate the effect of inoculum size on alkaline protease secretion, 1%, 3%, 5% and 7% inoculum sizes were transferred to the culture media, respectively, and alkaline protease activities were detected after incubation with the other optimal conditions revealed above. The amount of bacteria in the optimum fermentation condition was weighed by an electronic balance after being dried for 5h at 80°C.

Protease activity assay

A modification of the method of Kunitz [25] was used to assay protease activity using casein as a substrate and L-tyrosine as a standard. The 0.6ml reaction mixture consisted of 150µl of 1% casein in 200mM glycine-NaOH buffer (pH 10.0) and 150µl of culture supernatant. The reaction was started by adding culture supernatant at 40°C. After incubation for 15min, the reaction was stopped by adding 300µl of 0.4M trichloroacetic acid. The reaction liquid was kept on ice for another 10 min, then centrifuged at 10000 rpm for 10 min at 4°C. The 0.3ml supernatant was mixed with 1.5ml of a 0.4M Na₂CO₃ solution and 0.3ml of Folinphenol reagent and was incubated at 40°C for 20min. The concentration of L-tyrosine of digested casein was determined by monitoring an increase in absorbance at 680nm. The culture medium without SD8 bacteria added was used as the blank control in the absorbance reading. The calibration curve was constructed using L-tyrosine as a standard. One unit of protease activity was defined as the amount of enzyme that releases 1µg/ml of L-tyrosine equivalent per min [18].

Statistics

All data were expressed as the means ± SEM. A one-way ANOVA using SPSS 13.0 software was used to conduct a statistical comparison of differences among the groups and a value of P<0.05 was considered as being statistically significant.

Results

Identification of strain SD8 that produces alkaline protease

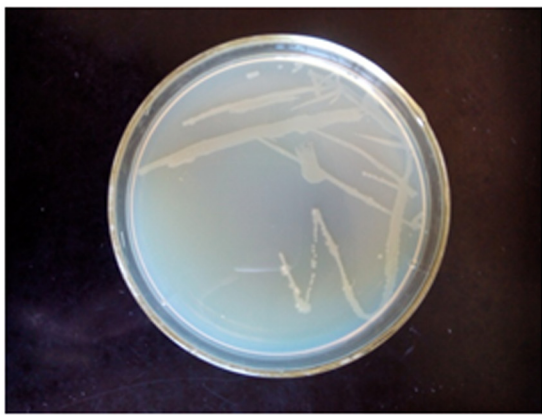
The strain SD8 was characterized as a Gram negative, motile, rod-shaped bacterial strain. Its morphological and biochemical characteristics were listed in Table 1. The colony morphology

Table 1. Morphological and biochemical characteristics of strain SD8.

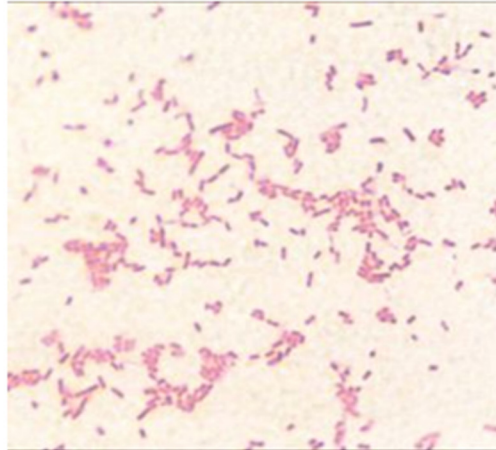
	Results
Colony morphology	Round, yellow, apophysis, marginal tidy, smooth surface, mucoid
Gram stain	-
Motility	+
Shape	Rod
Glucose	+
Mannitol	+
Sucrose	+
Fructose	+
Glycerin	-
Starch	+
Maltose	+
Lactose	+
Indole	-
Methyl red	-
VogesProskauer	+
Citrate	+
Urease	-
H₂S production	-
Amylolysis	-
Gelatin hydrolysate	-

“+”: positive; “-”: negative.

doi:10.1371/journal.pone.0146067.t001



A



B

Fig 1. The colony morphology (A) and gram stain (B) of murine bacteria strain SD8.

doi:10.1371/journal.pone.0146067.g001

and gram stain of strain SD8 were showed in Fig 1. Sugar using was positive except for glycerin. Voges Proskauer and Citrate were positive and other biochemical test results were negative. Based on these characteristics, the strain SD8 was identified probably as genus *Pseudomonas*.

To carry out 16S rDNA sequence analysis, the genome of strain SD8 was used for PCR amplification of 16S rDNA. Agarose gel electrophoresis of PCR product was shown in Fig 2. It can be seen that the molecular weight of PCR product of strain SD8 was corresponding to 1500bp of the DNA marker and the amplification was successful. The DNA sequence of 1440 bp product was obtained by 16S rDNA sequencing (Beijing Sanpo Polygala Biological Technology LTD, Beijing, China). The gene sequence was uploaded to GenBank database (accession number KM668099).

Following the sequence determination of the PCR product and 16S rDNA analysis, the strain SD8 was phylogenetically characterized and identified/compared with the closest relatives using BLAST (NCBI) search. Sequence analysis of 16S rDNA sequence for the isolate SD8 based on in silico analysis showed a 99% homology with *Pseudomonas hibiscicola* (Fig 3). The strain SD8 falls in the cluster comprising members of the *Pseudomonas hibiscicola* with the reliability of 79%. Thus with this evidence of identification, the isolate may belong to *Pseudomonas hibiscicola*.

Effect of fermentation medium on alkaline protease production

Four mediums were selected to observe the medium effect on the protease production of strain SD8. Among the four media, the LB medium was found to produce the alkaline protease with the highest activity (up to 176 U/mL) (Fig 4). The enzyme activities yielded from the starch ($P < 0.05$), beef extract-peptone ($P < 0.01$) and glucose medium ($P < 0.01$) were significantly lower than that from the LB medium. Hence, the LB medium was selected to carry out the subsequent experiments.

Previously, different carbon sources were found to have different influences on extracellular enzyme production [26]. In the current study, for investigating the influence of carbon sources on production of alkaline protease, effects of adding 5% carbon from different sources to the LB medium were examined (Fig 5). When compared to LB medium alone (blank control,

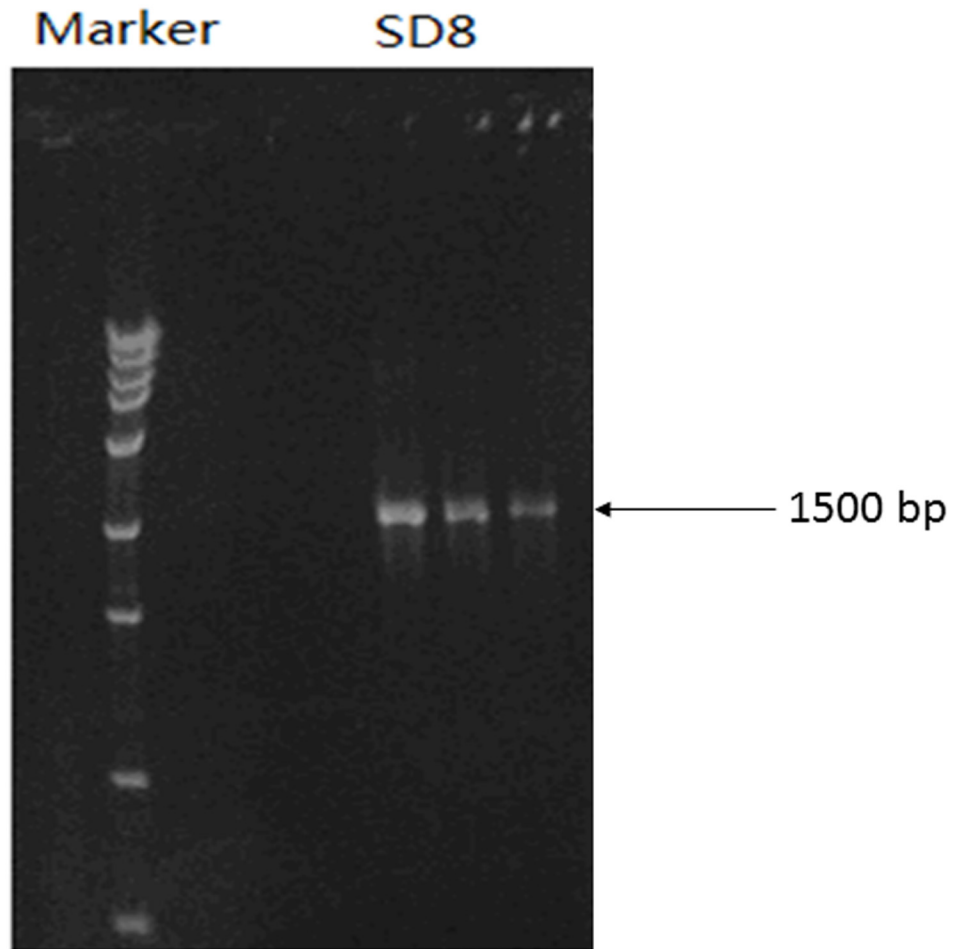


Fig 2. Electrophoregram of PCR products of strain SD8.

doi:10.1371/journal.pone.0146067.g002

without additional carbon added), while addition of lactose did not affect the alkaline protease activity, addition of maltose or glucose ($P < 0.05$), or either of the three other carbon sources (sucrose, soluble starch, and glycerin) ($P < 0.01$) significantly decreased the enzyme activity when compared to the blank control. The alkaline protease activity was found the lowest when sucrose was added (reduced about 50%). Therefore, the LB medium without carbon source was selected to perform the subsequent experiments.

Effect of culture conditions on alkaline protease production

The current study has investigated the effect of incubation time on alkaline protease production of strain SD8. Protease activity was found to increase rapidly after incubation for 24 h (Fig 6), and it was highest (180 U/mL) when the incubation time was 48 h, after which time it declined slowly. Compared to 48 h, all other incubation time periods produced significantly lower yields of alkaline protease. Therefore, the optimal fermentation time for alkaline protease production was 48 h for strain SD8. The growth curve of strain SD8 was also showed in Fig 6. The amount (as assessed by OD600 measurement) of strain SD8 increased quickly after 18 h, and it reached up to 1.77 at 42 h, which was almost to the same as the maximum (1.83) at 48 h. After that, the amount of strain SD8 declined slowly.

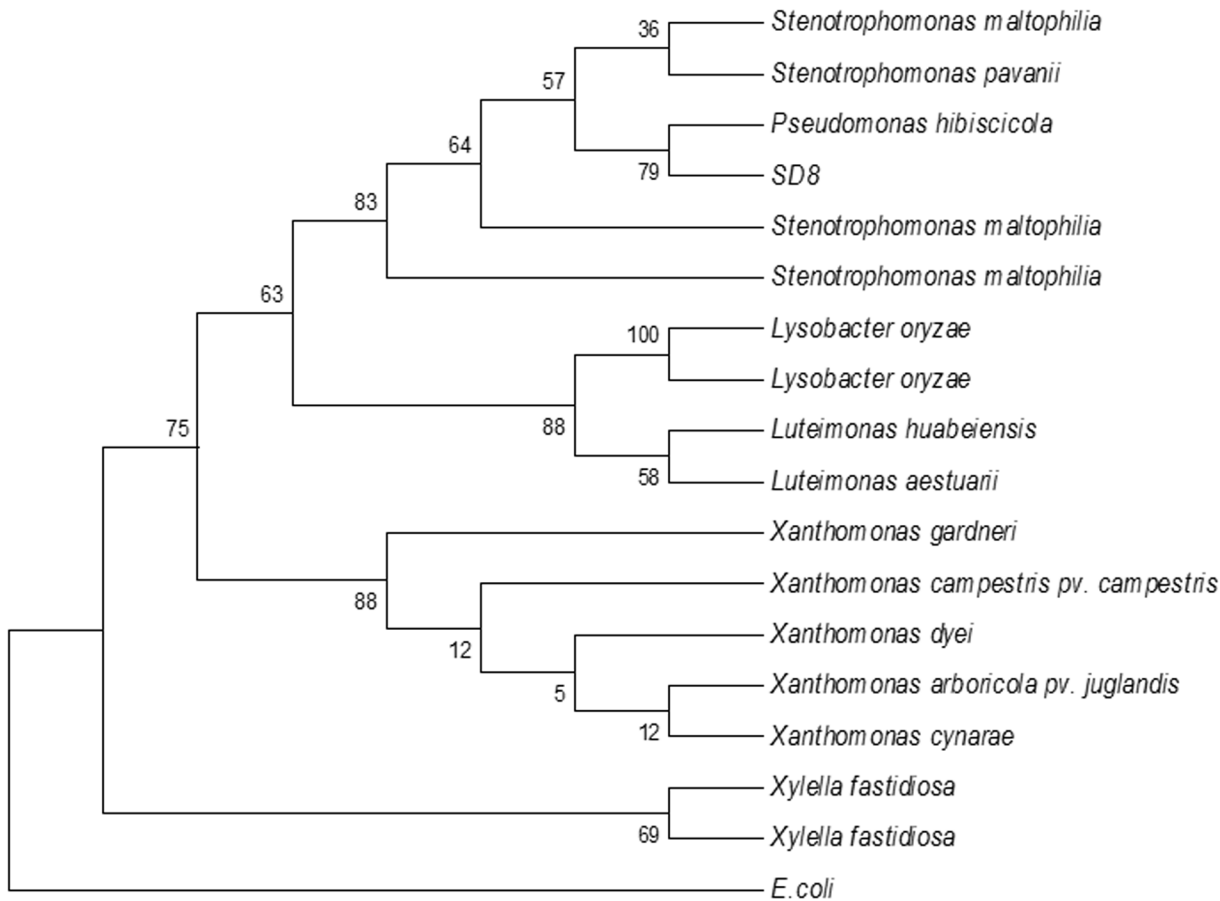


Fig 3. Phylogenetic tree analysis of strain SD8 based on comparison of its 16S rDNA sequence with those of closely related strains. The sequence of the 16S rDNA of *E. coli* was used as an outgroup. The tree was generated using the neighbor-joining v method.

doi:10.1371/journal.pone.0146067.g003

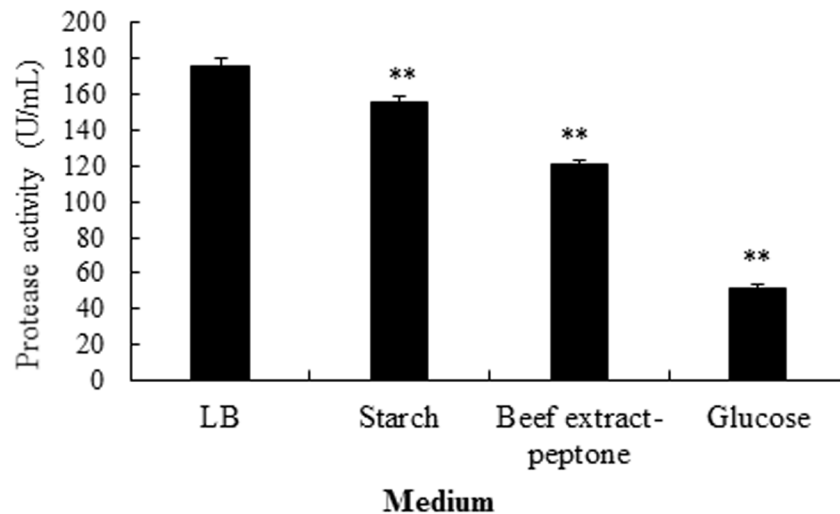


Fig 4. Effects of medium types in influencing the production of alkaline protease from strain SD8. The strain was cultured 48 h at 37°C. *P<0.05 and **P<0.01 compared to LB medium. All the data were given as means ± SEM (n = 3).

doi:10.1371/journal.pone.0146067.g004

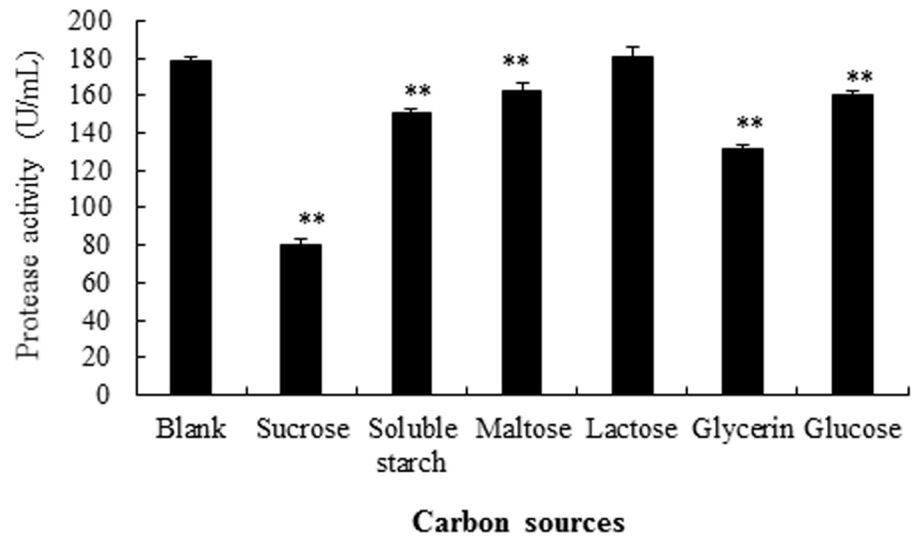


Fig 5. Effects of carbon sources in influencing the production of alkaline protease from strain SD8. LB medium without carbon added was selected as blank control. * $P < 0.05$ and ** $P < 0.01$ compared to blank control. All the data were given as means \pm SEM ($n = 3$).

doi:10.1371/journal.pone.0146067.g005

The current study also examined influences of culture medium pH and temperatures and found a gradual increase in the protease production in strain SD8 with increasing pH, with the optimum being at pH 7.5 (185U/mL) (Fig 7). At pH 8.5, the protease activity was 179 U/mL, which was lower than that of pH 7.5 ($P < 0.05$). In either lower pH (5.5 or 6.5) or higher pH (9.5 or 10.5) cultures, the protease activity was significantly lower than that of pH 7.5 ($P < 0.01$). When the incubation temperatures were 37 and 30°C, the alkaline protease activities

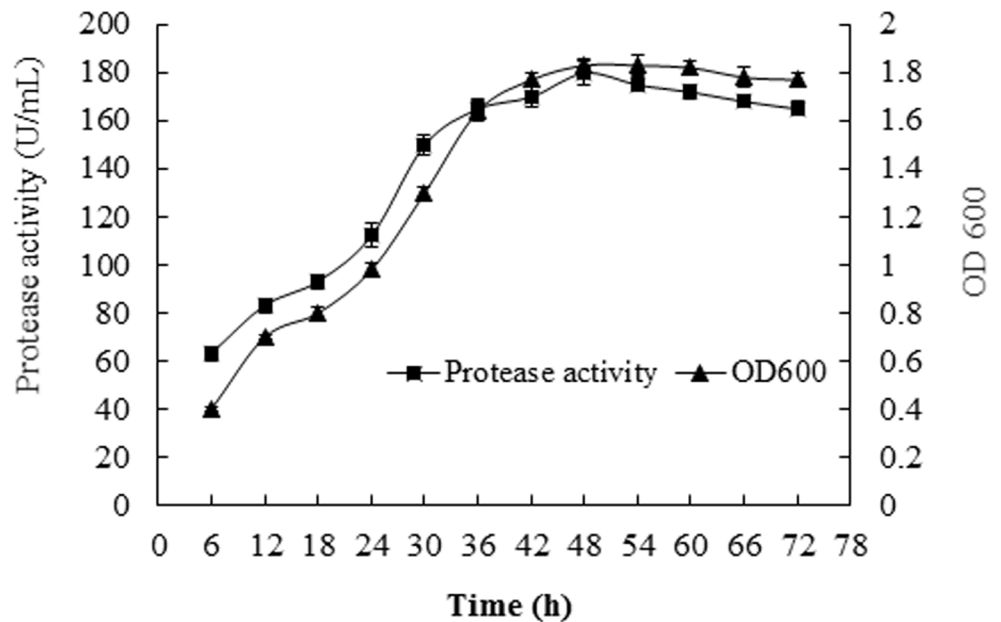


Fig 6. Effects of culture time in influencing the production of alkaline protease and growth from strain SD8. The optimum medium was used. All the data were given as means \pm SEM ($n = 3$).

doi:10.1371/journal.pone.0146067.g006

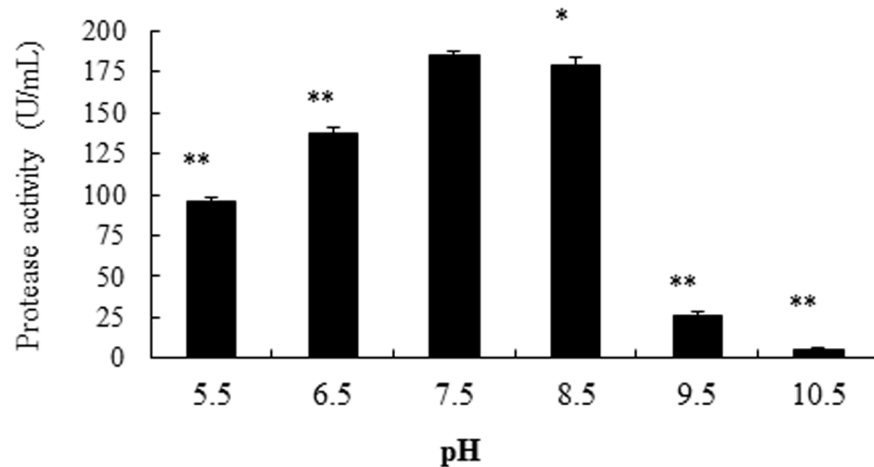


Fig 7. Effects of initial pH in influencing the production of alkaline protease from strain SD8. The single factor investigated was selected at optimal conditions. * $P < 0.05$ and ** $P < 0.01$ compared to pH 7.5. All the data were given as means \pm SEM ($n = 3$).

doi:10.1371/journal.pone.0146067.g007

of the cultures were 185 and 216 U/mL, respectively. Thus, 30°C was chosen for carrying out the subsequent work.

Different dissolved oxygen levels in the incubation liquid of the bioreactor could be obtained by varying medium quantity in the Erlenmeyer flask, which could influence the alkaline protease production. As shown in Fig 8, the alkaline protease activity was highest (196 U/mL) with the 20 mL culture liquid when under the optimal conditions established above. When the culture medium was 15 or 25 mL, the respective alkaline protease activity was significant lower than that of 20 mL ($P < 0.05$). When the medium was even lower or higher in volume (10 or 30 mL), the respective alkaline protease activity was significantly and substantially lower than that of 20 mL ($P < 0.01$).

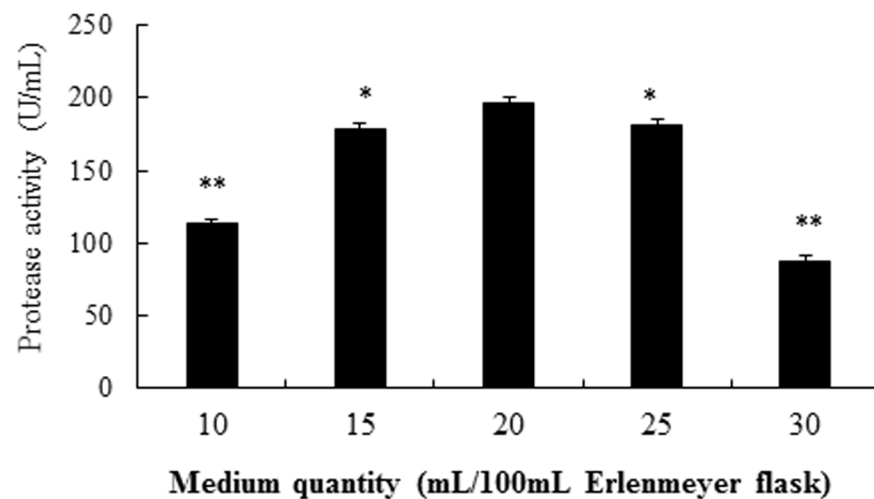


Fig 8. Effects of medium quantity in influencing the production of alkaline protease from strain SD8. The single factor investigated was selected at optimal conditions. * $P < 0.05$ and ** $P < 0.01$ compared to 20 mL/100 mL Erlenmeyer flask. All the data were given as means \pm SEM ($n = 3$).

doi:10.1371/journal.pone.0146067.g008

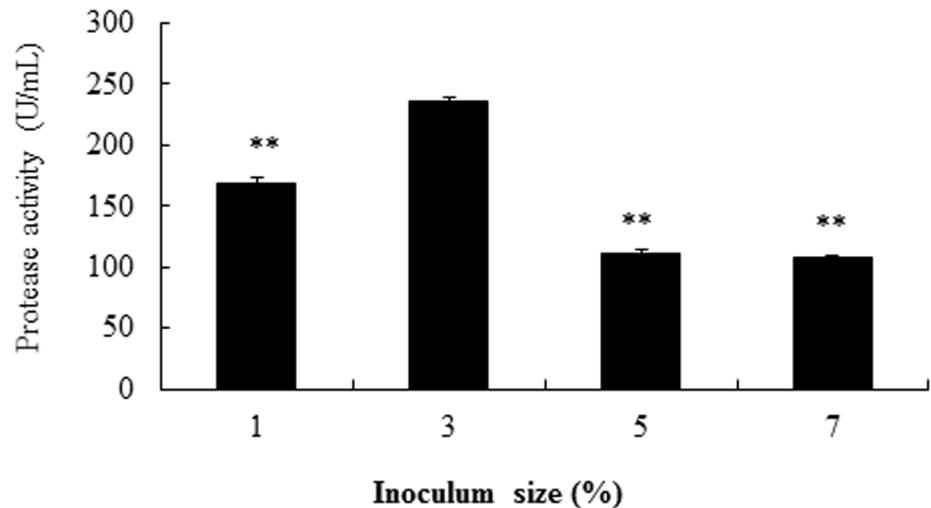


Fig 9. Effects of inoculum size in influencing the production of alkaline protease from strain SD8. The single factor investigated was selected at optimal conditions. ** $P < 0.01$ compared to 3% inoculum size. All the data were given as means \pm SEM ($n = 3$).

doi:10.1371/journal.pone.0146067.g009

The organism density (as affected by the inoculum size) could also affect the alkaline protease production in strain SD8. The enzyme activity was highest (236 U/mL) with the 3% inoculum size. When the inoculum size was lower (1%) or higher (5 or 7%), the alkaline protease activity was significantly lower when compared to the 3% inoculum size ($P < 0.01$, Fig 9). So 3% inoculum size was chosen as the optimal condition.

The bacterial mass was also determined in optimum fermentation conditions. The bacterial mass was found to be about 0.75 mg dry weight/mL fermentation broth when producing the optimum protease activity.

Discussion

More attention has been given to marine microorganisms for enzyme production as enzymes derived from them have been found in general relatively more stable and active compared to those from plants and animals. While alkaline protease produced by marine bacteria is known to have significant activity and stability at high pH and temperatures, studies on alkaline protease production from marine microorganisms have been very limited. In this study, one marine bacterial strain SD8 isolated from sea muds of the Qinhuangdao sea area in China producing alkaline protease relatively at a low yield was identified to be likely *Pseudomonas hibiscicola* following morphological, physiological and biochemical characterization as well as 16S rDNA sequence analysis. In addition, the current study has identified the LB medium (among 4 different media) as the optimum culture medium producing alkaline protease by the strain SD8. Furthermore, the current study has determined the optimal culture conditions for alkaline protease production (no additional carbon source, 48h fermentation time, initial pH 7.5, 30°C temperature, 20 mL culture liquid/100 mL Erlenmeyer flask and 3% inoculum size). When cultured at the optimized parameters, alkaline protease production was enhanced to 236 U/mL.

The strain SD8 was identified as *Pseudomonas hibiscicola* based on data of its morphology, physiology and biochemistry assays as well as 16S rDNA sequence analyses. While there were some reports that genus *Pseudomonas* could produce alkaline protease including *Pseudomonas*

aeruginosa [27], *Pseudomonas fluorescens* [28] and *Pseudomonas putida* [29], *Pseudomonas hibiscicola* was not found to secrete alkaline protease up to now. The finding of the strain SD8 being able to produce the alkaline protease and belonging to *Pseudomonas hibiscicola* has thus enriched our understanding of the characteristics of the *Pseudomonas hibiscicola*.

Since the types of medium and carbon sources could influence the production of alkaline protease [24], the current study has carried out the optimization of medium and carbon sources. It was found that the production of alkaline protease of strain SD8 was substantially different with different types of medium and carbon sources, with SB medium without additional carbon added being found to be optimal. Kumar et al [5] reported that lactose was the best carbon source for protease production by *Marinobacter* sp. GA CAS9, and Pant et al [6] reported that galactose was the best carbon source for protease production by *Bacillus subtilis*. These and our current studies have proved that the carbon sources affect the protease production and the best carbon source is different for different bacterial strains.

In addition, since the culture conditions also could influence the production of alkaline protease of microorganisms [16], the current study has also investigated optimal culture conditions of SD8 strain for the production of alkaline protease. The results indicated that the culture time, initial pH, temperature, medium quantity, and inoculum size could also influence the production of alkaline protease. The phenomenon of the effect of initial pH on production of alkaline protease was similar as that reported previously [30]. Our data of the optimal cultural conditions for alkaline production from SD8 strain has laid a foundation for further exploring the potential use of SD8 strain for alkaline protease production.

The activity of alkaline protease by the strain SD8 was found lower than that by *Marinobacter* sp. GA CAS9 or by *Bacillus subtilis* [5, 6, 31]. While the *Marinobacter* sp average activity was somewhere in the range of 400–1000 U/ml [5] and that of *Bacillus subtilis* was between 576–842 U/ml [31] at 24–48 hours, that of SD8 strain (or *P. hibiscicola*) was 236 U/ml at 48 hours. However, the alkaline protease produced by SD8 has been recently found to be stable in alkaline and SDS solutions and organic solvents [18]. These characteristics of the alkaline protease produced by SD8 will be important for its potential applications in industries that require a stable protease, as these extreme conditions often exist in commercial processes.

Conclusions

In this study, marine bacterial strain SD8 was initially classified to belong to genus *Pseudomonas* by morphological, physiological and biochemical characterizations, and then identified to be likely *Pseudomonas hibiscicola* through 16S rDNA sequence. In addition, in attempts to optimize its culture conditions, this study has investigated mediums, carbon sources and culture conditions for maximum production of alkaline protease. Optimum enzyme production (236U/mL with bacterial mass being at 0.75 mg dry weight/mL fermentation broth) was obtained when the isolate at a 3% inoculum size was grown in LB medium at 20 mL medium/100mL Erlenmeyer flask for 48h culture at 30°C with an pH 7.5. This was the first report of strain *Pseudomonas hibiscicola* secreting alkaline protease. The finding of the strain SD8 being able to produce the alkaline protease and belonging to *Pseudomonas hibiscicola* could enrich our understanding of the characteristics of the *Pseudomonas hibiscicola*, and our data for its optimal cultural conditions for alkaline protease production has laid a foundation for future exploration for the potential use of SD8 strain for alkaline protease production. Further studies will be required to investigate the production, activity and stability of the alkaline protease produced by SD8 strain and conduct comparative studies with proteases produced by other species or bacterial strains.

Author Contributions

Conceived and designed the experiments: HC CJX. Performed the experiments: LW CJX. Analyzed the data: HC MY. Contributed reagents/materials/analysis tools: HC MY. Wrote the paper: HC LW CJX.

References

1. Patel R, Dodia M, Singh S. Extracellular alkaline proteases from a newly isolated haloalkaliphilic *Bacillus* sp.: production and optimization. *Process Biochem.* 2005; 40: 3569–3575.
2. Raval RH, Pillai S, Rawal CM, Singh SP. Biochemical and structural characterization of a detergent-stable serine alkaline protease from seawater haloalkaliphilic bacteria. *Process Biochem.* 2014; 49: 955–962.
3. Gupta R, Beg QK, Lorenz P. Bacterial alkaline proteases: molecular approaches and industrial applications. *Appl Microbiol Biotechnol.* 2002; 59: 15–32. PMID: [12073127](#)
4. Annamalai N, Rajeswari MV, Sahu SK, Balasubramanian T. Purification and characterization of solvent stable, alkaline protease from *Bacillus firmus* CAS 7 by microbial conversion of marine wastes and molecular mechanism underlying solvent stability. *Process Biochem.* 2014; 49: 1012–1019.
5. Kumar RS, Ananthan G, Prabhu AS. Optimization of medium composition for alkaline protease production by *Marinobacter* sp. GA CAS9 using response surface methodology-A statistical approach. *Biocatal Agric Biotechnol.* 2014; 3: 191–197.
6. Pant G, Prakash A, Pavani JVP, Bera S, Deviram GVNS, Kumar A, et al. Production, optimization and partial purification of protease from *Bacillus subtilis*. *J Taibah Univ Sci.* 2015; 9: 50–55.
7. Lee BW, Kim BK, Lee YJ, Chung CH, Lee JW. Industrial scale of optimization for the production of carboxymethylcellulase from rice bran by a marine bacterium, *Bacillus subtilis* subsp. *Subtili* A-53. *Enzym Microb Technol.* 2010; 46: 38–42.
8. Annamalai N, Rajeswari MV, Thavasi R, Vijayalakshmi S, Balasubramanian T. Solvent stable protease from *Bacillus halodurans* CAS6 using marine shellfish wastes: a potential additive for detergent and antioxidant synthesis. *Bioproc Biosyst Engineer.* 2013; 7: 873–883.
9. Rasmussen RS, Morrissey MT. Marine biotechnology for production of food ingredients. *Adv Food Nutr Res.* 2007; 52: 237–292. PMID: [17425947](#)
10. Rao MB, Tanksale AM, Ghatge MS, Deshpande W. Molecular and biotechnological aspects of microbial proteases. *Microbiol Mol Biol Rev.* 1998; 62: 597–635. PMID: [9729602](#)
11. Miyaji T, Ota Y, Nakagawa T, Watanabe T, Niimura Y, Tomizuka N. Purification and molecular characterization of subtilisin-like alkaline protease BPP-A from *Bacillus pumilus* strain MS-1. *Lett Appl Microbiol.* 2006; 42: 242–247. PMID: [16478511](#)
12. Arastoo BD, Zahra K. Screening and isolation of an organic solvent tolerant-protease from *Bacillus* sp. JER02: Activity optimization by response surface methodology. *J Mol Cataly B: Enzymatic.* 2013; 89: 15–23.
13. Gupta R, Beg QK, Khan S, Chauhan B. An overview on fermentation, downstream processing and properties of microbial alkaline protease. *Appl Microbiol Biotechnol.* 2002; 60: 381–394. PMID: [12466877](#)
14. Hameed A, Keshavarz T, Evans CS. Effect of dissolved oxygen tension and pH on the production of extracellular proteases from a new isolate of *Bacillus subtilis* K2, for use in leather processing. *J Chem Technol Biotechnol.* 1999; 74: 5–8.
15. Gupta R, Beg QK, Lorenz P. Bacterial alkaline proteases: molecular approaches and industrial applications. *Appl Microbiol Biotechnol.* 2002; 59: 15–32. PMID: [12073127](#)
16. Saba I, Qazi PH, Rather SA, Dar RA, Qadri QA, Ahmad N, et al. Purification and characterization of a cold active alkaline protease from *Stenotrophomonas* sp., isolated from Kashmir, India. *World J Microbiol Biotechnol.* 2012; 28: 1071–1079. doi: [10.1007/s11274-011-0905-1](#) PMID: [22805828](#)
17. Chi Z, Liu ZQ. Marine yeasts and their applications in mariculture. *Collection Studys Nat Conf High Tech Marine Biotechnol.* 2005; 3: 243–247.
18. Cui HX, Wang L. Screening of a newly marine bacteria producing alkaline protease from Qinhuangdao sea area and its characterization of alkaline protease. *J Chem Pharmac Res.* 2014; 6: 1236–1242.
19. Olofsson TC, Ahrné S, Molin G. Composition of the bacterial population of refrigerated beef, identified with direct 16S rRNA gene analysis and pure culture technique. *Int J Food Microbiol.* 2007; 118: 233–240. PMID: [17765348](#)
20. Creig RN, Holt GL. *Bergey's Manual of Systematic Bacteriology.* 1984. Williams and Wilkins, London.

21. Smibert RM, Krieg NR. Phenotypic characterization, p 607–654. In Gerhardt P, Murray WA, Wood RGE, Krieg NR (ed), *Methods for general and Molecular Bacteriology*. 1994. American Society for Microbiology, Washington, DC.
22. Redburn AC, Patel BKC. Phylogenetic analysis of *Desulfotomaculum thermobenzoicum* using polymerase chain reaction-amplified 16S rRNA-specific DNA. *FEMS Microbiol Lett*. 1993; 13: 81–86.
23. Edwards U, Rogall TH, Blocker H, Emde M, Bottger EC. Isolation and direct complete nucleotide determination of entire genes: Characterization of a gene coding for 16S ribosomal RNA. *Nucleic Acids Res*. 1989; 17: 7843–7853. PMID: [2798131](#)
24. Kalaiarasi K, Sunitha P. Optimization of alkaline protease production from *Pseudomonas fluorescens* isolated from meat waste contaminated soil. *Afr J Biotechnol*. 2009; 8: 7035–7041.
25. Kunitz M. Crystalline soybean trypsin inhibitor. II. General properties. *J General Physiol*. 1947; 30: 291–310.
26. Chi Z, Ma C, Wang P, Li HF. Optimization of medium and cultivation conditions for alkaline protease production by the marine yeast *Aureobasidium pullulans*. *Bioresource Technol*. 2007; 98: 534–538.
27. Meena P, Tripathi AD, Srivastava SK, Jha A. Utilization of agro-industrial waste (wheat bran) for alkaline protease production by *Pseudomonas aeruginosa* in SSF using Taguchi (DOE) methodology. *Bio-cataly Agric Biotechnol*. 2013; 2: 210–216.
28. Kandasamy N, Velmurugan P, Sundarvel A, Raghava RJ, Bangaru C, Palanisamy T. Eco-benign enzymatic dehairing of goatskins utilizing a protease from a *Pseudomonas fluorescens* species isolated from fish visceral waste. *J Cleaner Product*. 2012; 25: 27–33.
29. Singh SK, Singh SK, Tripathi VR, Khare SK, Garg SK. A novel psychrotrophic, solvent tolerant *Pseudomonas putida* SKG-1 and solvent stability of its psychro-thermoalkalizable protease. *Process Biochem*. 2011; 46: 1430–1435.
30. Agrawal D, Patidar P, Banerjee T, Patil S. Alkaline protease production by a soil isolate of *Beauveria felina* under SSF condition: parameter optimization and application to soy protein hydrolysis. *Process Biochem*. 2005; 40: 1131–1136.
31. Chatterjee J, Giri S, Maity S, Sinha A, Ranjan A, Rajshekhar, et al. Production and characterization of thermostable alkaline protease of *Bacillus subtilis* (ATCC 6633) from optimized solid-state fermentation. *Biotechnol Appl Biochem*. 2015; 62, 709–718. doi: [10.1002/bab.1309](#) PMID: [25323045](#)