

05

3-7-73
PART ONE

ORIENTATION



ON DIT

MID JANUARY 1972

Registered for post as a periodical category B

ON DIT

EDITORIAL



THE PEOPLE'S PAPER

This is just a note to welcome you to the University of Adelaide and to introduce you to ON DIT the University Student paper.

The function of a student newspaper is:-
 ● To report campus events and other matters of interest to students.

● To encourage people to take an interest in student affairs.

● To publicise extra-curricular activities.

● To provide a forum for student opinions.

● Generally to entertain and educate.

ON DIT will be published once a week during the first and second terms, and once a fortnight during the third term (See the calendar on this sheet.)

In ON DIT you will find:-

● Contributed feature articles.

● Syndicated articles from the underground press.

● News not prominent in the daily press.

● News from other tertiary institutions, the Australian Union of Students, the University, the Union, the Student Association and the Clubs and Societies.

● Reviews of literature, music, theatre and film.

● Comics, cartoon comment and graphics.

● Satire, fantasy and humor.

● Basic information on services provided for students.

● Classified advertisements.

ON DIT is produced by students for students. If you would like to help, then contact me or one of the other members of the ON DIT staff. We would be glad to see you.

ADVERTISING

Classified Ads are free to students. Organisations associated with the University are allowed free advertisements up to one eighth of a page, i.e. 4" by 2½".

The basic rate to outside advertisers is \$1.50 per square inch, or:-

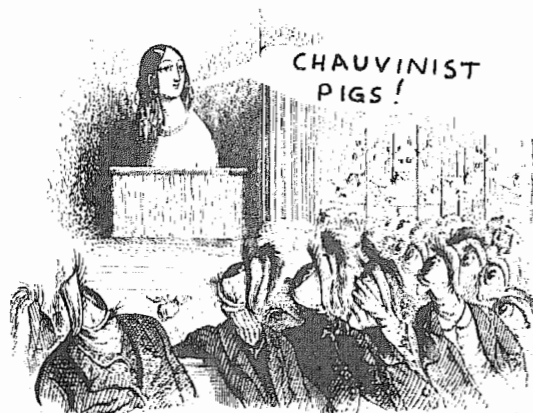
\$160 per full page

\$100 per half page

\$50 per quarter page

Ads should be booked with the ON DIT Editor preferably up to 11 days before publication with the copy being provided up to 7 days before publication.

Classified Ads may be booked up to 5 days before publication.



ON DIT NEEDS YOU

ON DIT or Ego Trip Incorporated, sponsored by the Student Association and sustained by the various talents of the more active students on campus, is the lifeblood of the university. It is the oracle of all that is true and just. It is the cry in the wilderness of student dissatisfaction, idealism and supreme optimism in the face of daunting odds and dogged conservatism.

The paper is headed by one or more editors supported by variously described sub editors, who in turn delegate their lack of authority to contributors going under the euphemism of "staff". The paper is produced weekly for the most part from articles which are cajoled or squeezed out of the selected victims. Should persuasion fail, then threats to life and limb become the order of the day. Despite the usual murmurings of some students, ON DIT has a fairly good reputation both here and interstate, and this reputation can only be furthered by new blood and new ideas blah, blah etc., etc. It behoves us to ask you why you should consider joining ON DIT.

If you consider yourself to be a frustrated matriculation student, then ON DIT is for you. If you do not consider yourself frustrated then ON DIT is still for you, because there are a helluva lot of frustrated people running it and your stable approach would be a unique asset. Should you have more than equilibrium to offer so much the better.

If you have a burning desire to write about anything, or you have the potential talent to draw cartoons or illustrations, then it is your solemn duty to approach the editors and say, "Hey I have a burning desire to write about anything" or "I have the potential talent to draw cartoons or illustrations". To your amazement they will whip out a ballpoint and scrawl your name and aspirations down.

Above all don't be shy about approaching the editors, for although you may have numerous hang ups about your secondary school inadequacies, remember that it's all a case of the blind leading the blind, because the editors are also having teething troubles and need your help more than you realise. There are a thousand and one jobs to do in getting a paper written, produced and circulated.

Apart from this, there is a certain spine-tingling feeling which overpowers you when your name appears with your contribution in the paper, not to mention the kudos and fame that comes your way when you become an enlisted member of ON DIT.

Therefore, if you have any sort of journalistic or artistic aspirations whatsoever, then the rudimentary experience gained from participating in the production of ON DIT will provide you with a good basis for the future.

To avoid becoming a "trained" cabbage, join ON DIT, and become an "educated" student. You will find it extremely worthwhile.

D
A
F
E
D
S

OKAY YOU GUYS NOW GET DIS...



SLUGGO'S JUST GOT DA WORD FROM MR BIG!



DERE IS AN ELECTION COMIN' UP SEE!



DOES DAT MEAN WE GOTTA HELP



DATS RIGHT WORM!



YEA THINGS ARE LOOKIN GRIM! WE GOTTA THINK OF SOMETHIN'!



I GOT IT BOSS! WE HOUND DA STUDES AGAIN.



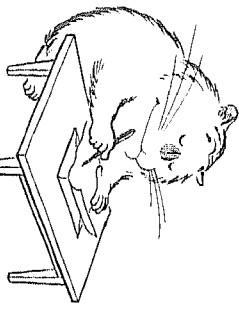
DA PUBLIC ALWAYS FALL FOR DAT LINE!



HURRAH FOR LAW AN ORDER! WE WILL VOTE FOR YOU !!



CONTRIBUTIONS



CONTRIBUTIONS

Written copy should be typed or neatly handwritten and should be submitted at least a week before publication unless prior arrangement is made with the editor for late submission.

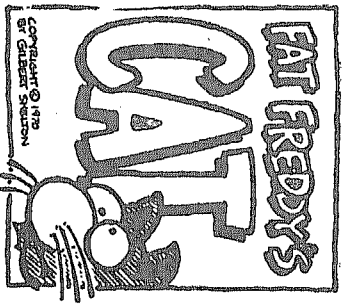
Drawings should be done in drawing ink. Drawings done with a black sign or marking pen are also suitable. Pencil drawings will not reproduce properly.

Good quality black and white photographs are suitable for reproduction. Photographs should be submitted for screening at least a week before publication.

Usually photographs and illustrations that have been published in newspapers and magazines are suitable for reproduction. (copyright is another matter). Contact the editor if in doubt about the submission of contributions.

CREDITS

ORIENTATION ON DIT was published by the Publications Committee of the Students' Association University of Adelaide.
Editor, P. Lane.



ON DIT CALENDAR 1972

showing publication dates

New Moon, 16th	JAN.	Full Moon, 1st 30th				
Su.	M.	Tu.	W.	Th.	F.	S.

New Moon, 15th	FEB.	Full Moon, 29th				
Su.	M.	Tu.	W.	Th.	F.	S.

New Moon, 13th	MAR.	Full Moon, 30th				
Su.	M.	Tu.	W.	Th.	F.	S.

New Moon, 14th	APRIL	Full Moon, 28th				
Su.	M.	Tu.	W.	Th.	F.	S.

New Moon, 13th	MAY	Full Moon, 28th				
Su.	M.	Tu.	W.	Th.	F.	S.

New Moon, 11th	JUNE	Full Moon, 27th				
Su.	M.	Tu.	W.	Th.	F.	S.

New Moon, 11th	JULY	Full Moon, 26th				
Su.	M.	Tu.	W.	Th.	F.	S.

New Moon, 9th	AUG.	Full Moon, 25th				
Su.	M.	Tu.	W.	Th.	F.	S.

New Moon, 8th	SEPT.	Full Moon, 23rd				
Su.	M.	Tu.	W.	Th.	F.	S.

New Moon, 7th	OCT.	Full Moon, 22nd				
Su.	M.	Tu.	W.	Th.	F.	S.

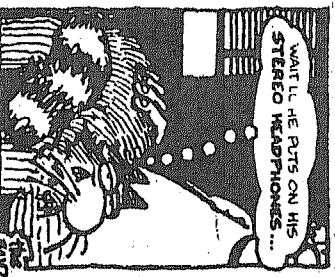
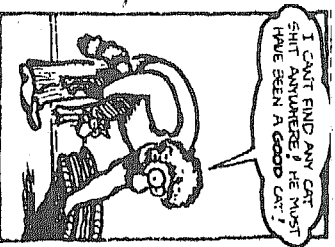
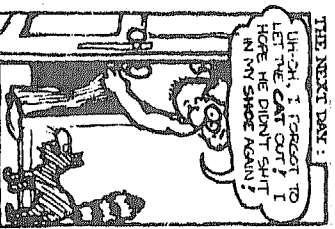
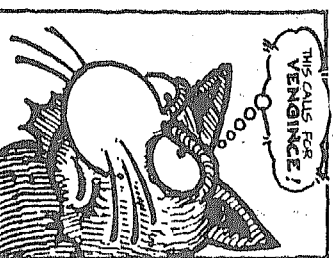
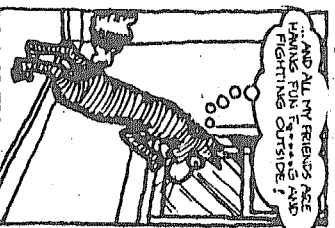
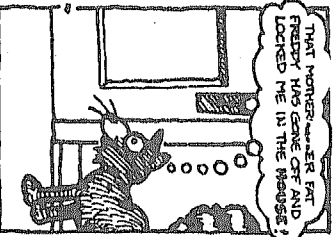
New Moon, 6th	NOV.	Full Moon, 21st				
Su.	M.	Tu.	W.	Th.	F.	S.

New Moon, 6th	DEC.	Full Moon, 20th				
Su.	M.	Tu.	W.	Th.	F.	S.

NEW YEAR'S DAY, Saturday, 1st January
(To be celebrated on Monday, 3rd January)
AUSTRALIA DAY, Monday, 31st January
GOOD FRIDAY, 31st March
SATURDAY, the day after Good Friday, 1st April
EASTER MONDAY, 3rd April

QUEEN'S BIRTHDAY, 21st April
(To be celebrated on Monday, 12th June)
ANZAC DAY, Tuesday, 25th April
ADELAIDE CUP DAY, Monday, 15th May
LABOR DAY, Monday, 9th October
CHRISTMAS DAY, Monday, 25th December

PROCLAMATION DAY, Thursday, 28th December
SCHOOL HOLIDAYS
First Term: 20/12/71 to 4/2/72
Second Term: 8/5/72 to 19/5/72
Third Term: 28/8/72 to 8/9/72
LAST DAY OF SCHOOL, 15/12/72



HOLIDAYS

Publication Dates