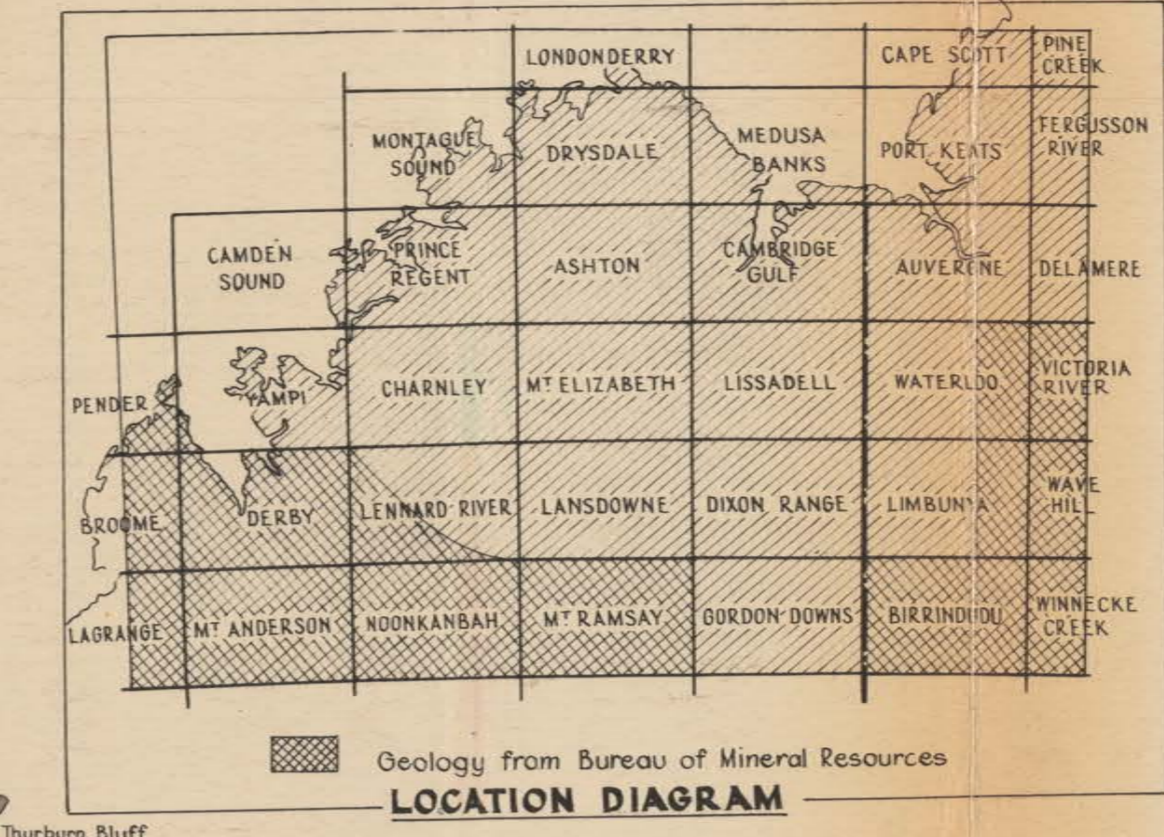


THE B.H.P. CO PTY LTD  
GEOLOGICAL MAP OF THE KIMBERLEYS & WESTERN NORTHERN TERRITORY

Geology by J.E. HARMS

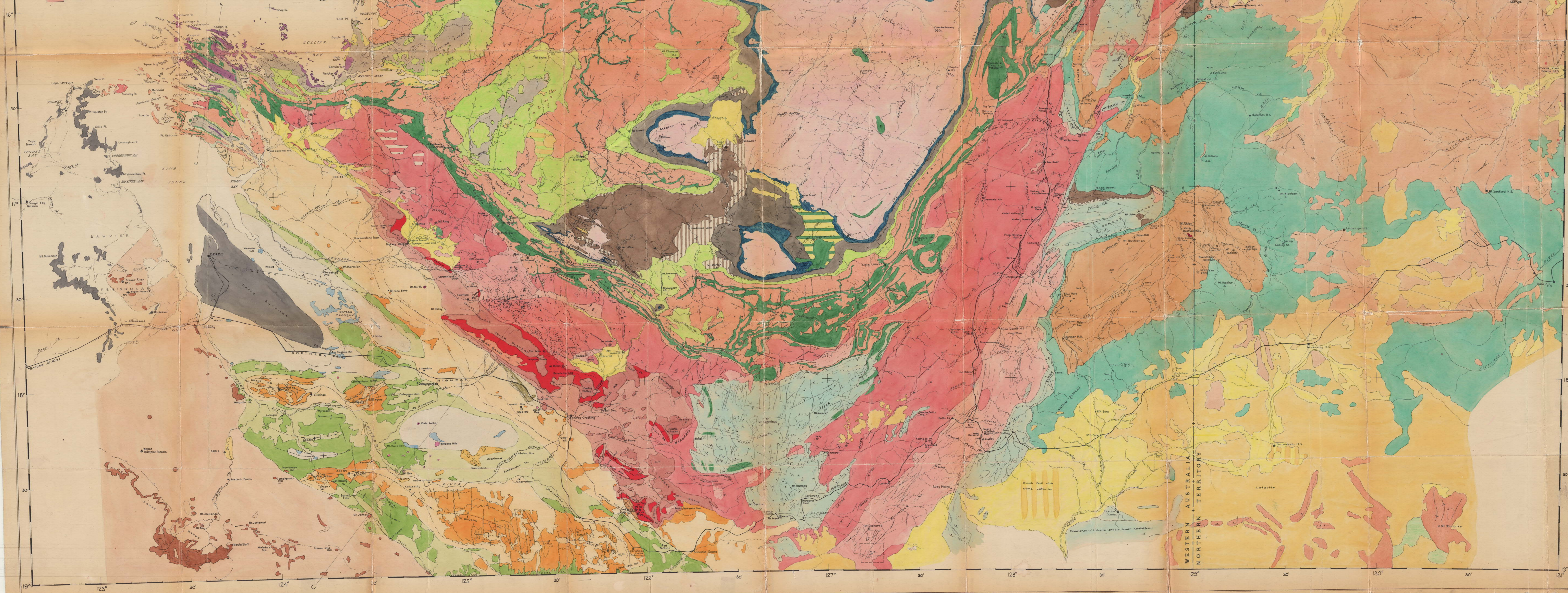
Note: Prepared from Photo-interpretation and Field Work. Base map uncontrolled.

SCALE OF MILES  
0 10 20 30 40 50



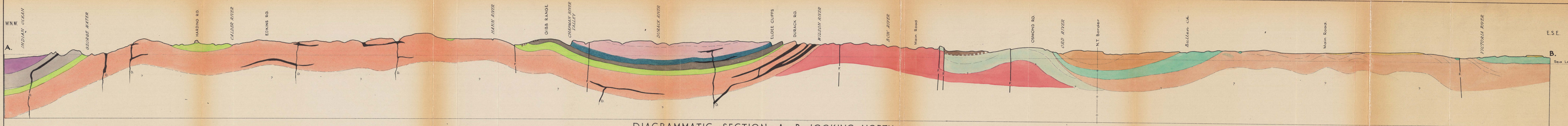
WEST KIMBERLEY	YAMPI AREA	CENTRAL AND EAST KIMBERLEY AND WESTERN N.T.	NORTHERN TERRITORY
RECENT Alluvium	Alluvium	Alluvium	Alluvium
TERTIARY Laterite	Laterite	Deep black soil Alluvium	Deep black soil Alluvium
CRETACEOUS Warrabah Conglomerate		Laterite	Laterite
JURASSIC Mulla Sandstone		White Mountain Form.	Mulligan Group
TRIASSIC Fitzroy Limestone			
PERMIAN Loring Formation			
LOWER CARBONIFEROUS Laurel Beds			
UPPER DEVONIAN Fourfield Beds			
MIDDLE DEVONIAN Pricas Creek Group			
UPPER CAMBRIAN Carlton Group			
MIDDLE CAMBRIAN Elder Sandstone			
LOWER CAMBRIAN Mt House Beds			
UPPER ADELARDIAN Wahki Tiltite			
LOWER ADELARDIAN Barricoot Sandstone			
LOWER ADELARDIAN Elgee Shale			
LOWER ADELARDIAN Warton Sandstone			
LOWER ADELARDIAN Mornington Volcanics			
LOWER ADELARDIAN King Leopold Sandstone			
LOWER ADELARDIAN Lambton Complex			
LOWER ADELARDIAN Halls Creek Metamorphics			

INTRUSIVE ROCKS	STRUCTURAL FEATURES	
Fitzroy Limestone (in part intruded)	Highway	
Schuchites (of East Kimberly Form.)	Roads and tracks	
Dolerite - Hart Dolerite	Homesite	Anticlinal Crest
Quartz (Falcon Range), Doree Porphyry	Bore	Synclinal Crest
Winneco Granite	Air Strip	Fault
Dolerite Dykes (in Lambton Complex)	Mineral Deposit and Tail Refractory	Joint
	Geological Boundary	Horizontal Bedding
	Trend Line	Strike and Dip of Bedding
	Quartz	Vertical Dip
	Dikes	

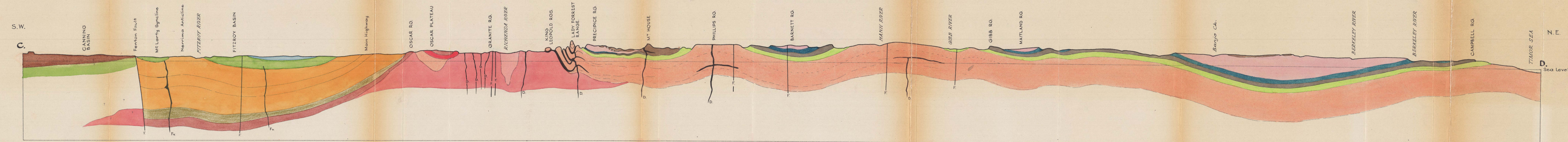


WESTERN AUSTRALIA  
NORTHERN TERRITORY





DIAGRAMMATIC SECTION A - B. LOOKING NORTH.



DIAGRAMMATIC SECTION C - D. LOOKING N.W.

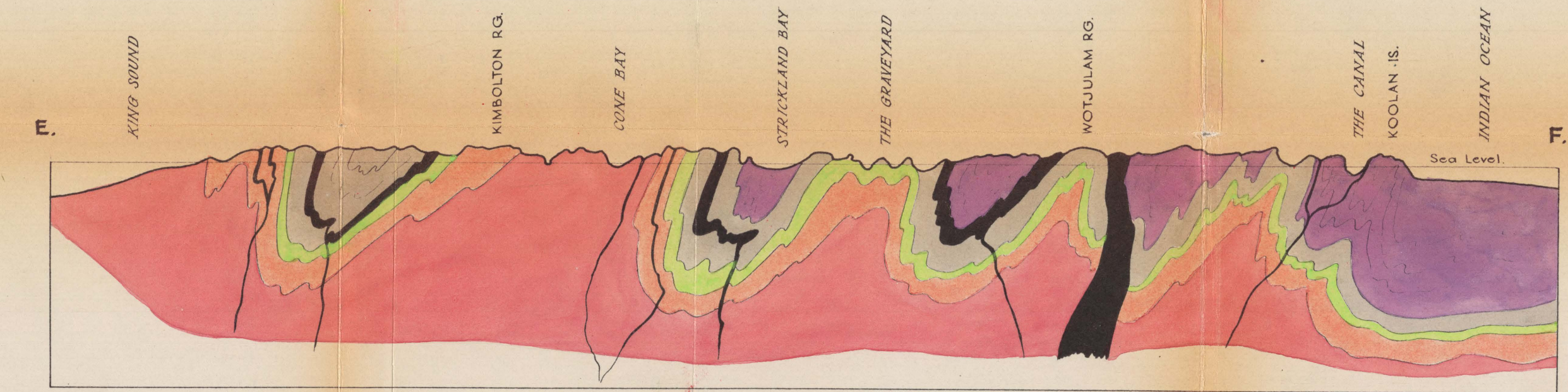
**LEGEND - SECTIONS A-B, C-D.**

Hart Dolerite dykes and sills.

Fitzroy Lamproites.

Faults.

Horizontal Scale: 1 Inch = 10 Miles  
 Vertical Scale exaggerated and diagrammatic only  
 Topographic features largely assumed due to lack of survey control.  
 Thickness of formations not accurately known and not to scale.



DIAGRAMMATIC SECTION E - F. LOOKING WEST.

Horizontal Scale: 1 Inch = 4 Miles  
 Vertical Scale: Diagrammatic only  
 Topography not surveyed.  
 Structure and formation thicknesses not accurately known, and latter not comparative.

**LEGEND.**

Felspar Porphyry, Diorite, and Dolerite dykes, sills, Bosses etc.



Compiled by J. E. Haines  
 Note - Prepared from Photo-interpretation and  
 Field Work. Some minor uncertainties.

SCALE OF MILES  
 0 10 20 30 40 50



**LEGEND**

**WESTERN AUSTRALIA**

**MAP AREA**

**NORTHERN TERRITORY**

**IMMEDIATE INDEX**

**LOCALITY PLAN SOWING MAIN MINERAL OCCURRENCES**

Numbers refer to page number in pt III of text

- Gold
- Iron
- Chromium, Vanadium, Cobalt, Manganese, Magnesite, Uranium
- Copper
- Tin, Tungsten, Niobium-Tantalum
- Lead-Zinc-Silver
- Barytes, Beryl, Mica, Asbestos, Emery, Fluorite
- Quano
- + Bases for oil or Stratigraphic information

