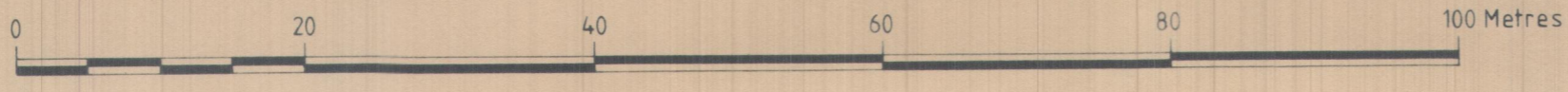


GEOLOGICAL MAP OF LIPSON COVE (NORTH)

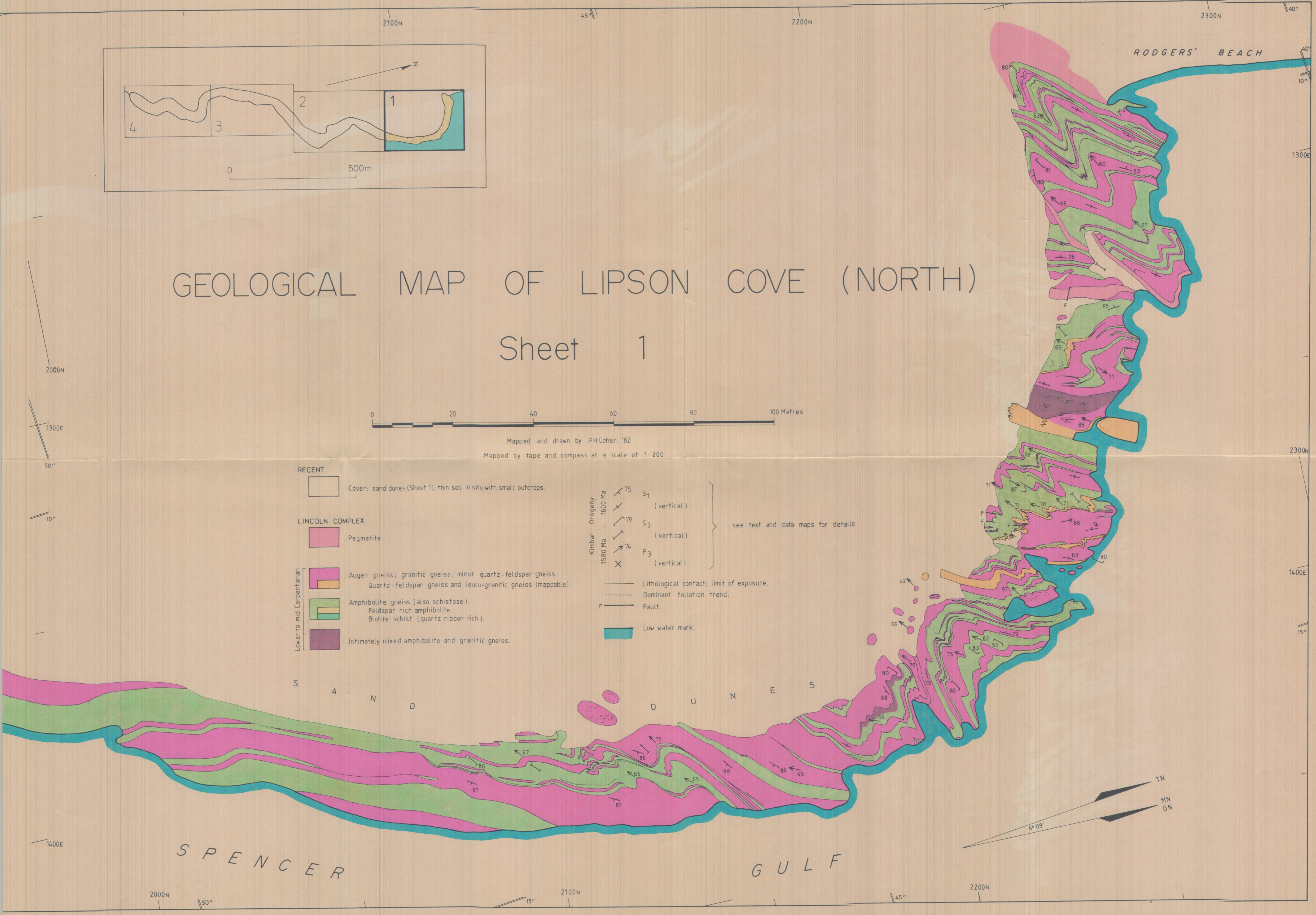
Sheet 1



Mapped and drawn by PHCohen, '82
 Mapped by tape and compass at a scale of 1:200

- | | | |
|------------------------|---|--|
| RECENT | Cover: sand dunes (Sheet 1); thin soil in situ with small outcrops. | |
| LINCOLN COMPLEX | | |
| | Pegmatite | |
| | Augen gneiss; granitic gneiss; minor quartz-feldspar gneiss. Quartz-feldspar gneiss and leuco-granitic gneiss (mappable). | S ₁ (vertical) |
| | Amphibolite gneiss (also schistose). Feldspar rich amphibolite. Biotite schist (quartz ribbon rich). | S ₃ (vertical) |
| | Intimately mixed amphibolite and granitic gneiss. | F ₃ (vertical) |
| | | Lithological contact; limit of exposure. |
| | | Dominant foliation trend. |
| | | Fault. |
| | | Low water mark. |

see text and data maps for details



1700N

1800N

55"

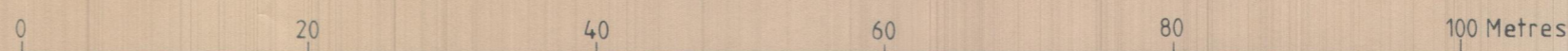
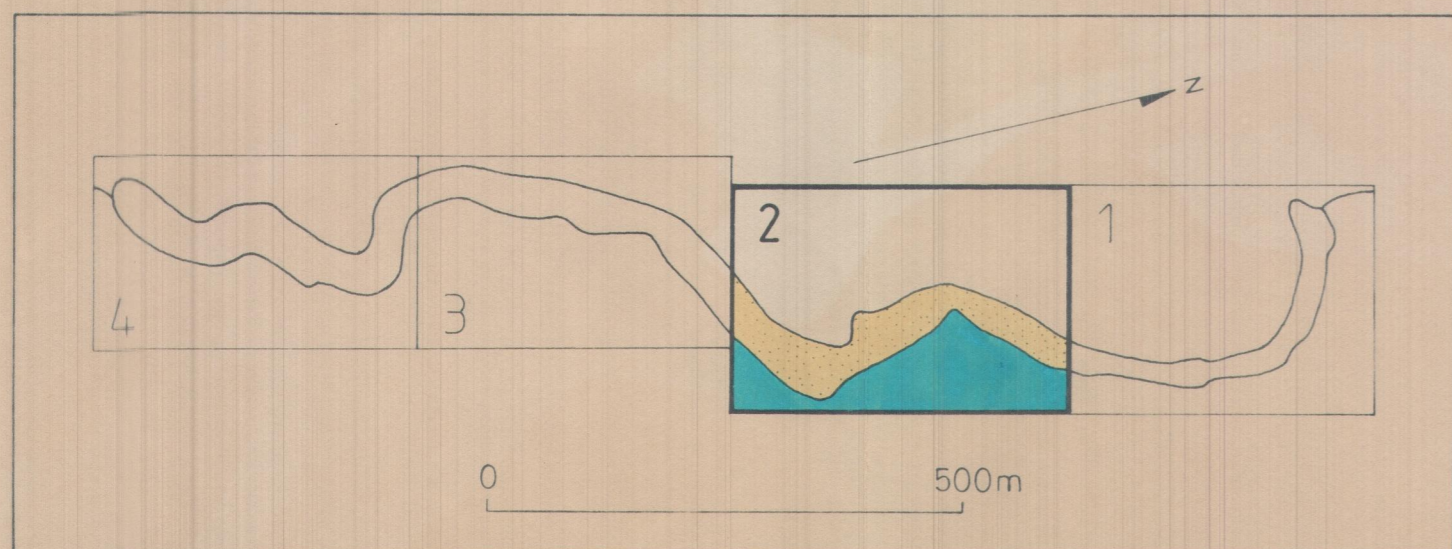
1900N

05" 50"

1200E 2000N

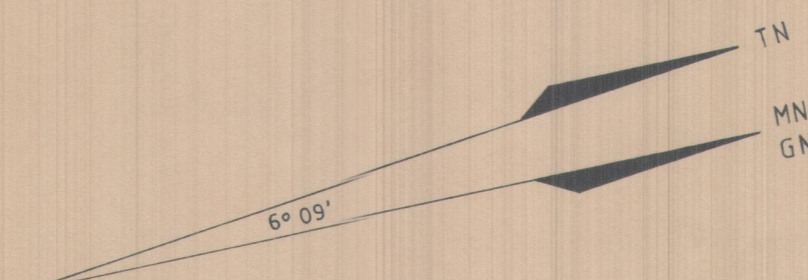
GEOLOGICAL MAP OF LIPSON COVE (NORTH)

Sheet 2



Mapped and drawn by PH.Cohen, '82

Refer to Sheet 1 for legend



S P E N C E R

G U L F

34° 15' 00"

1700N

1800N

55"

1900N

1400E

1400N

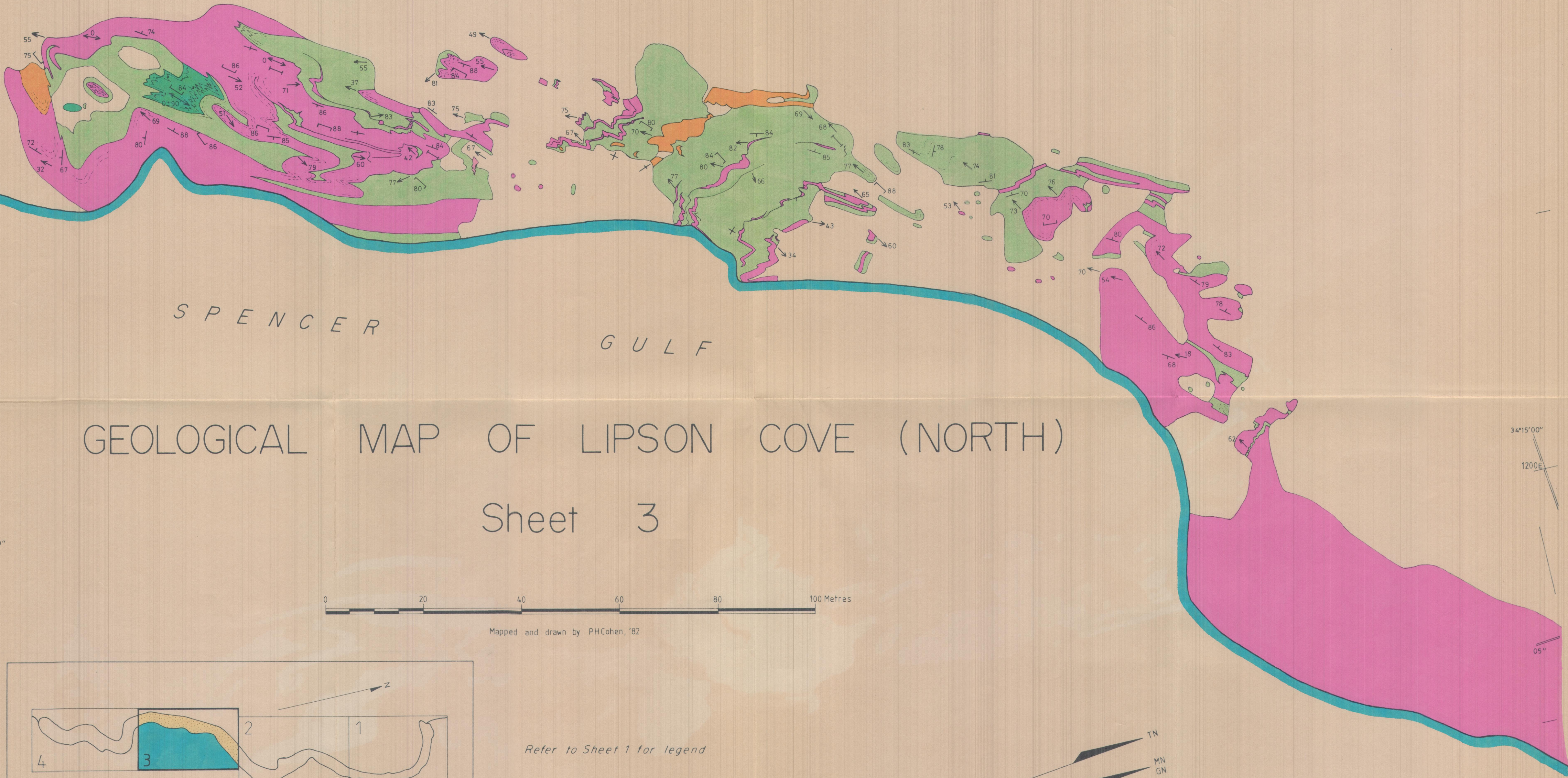
1500N

1600N

34°15'00"

1100E

136°16'00"

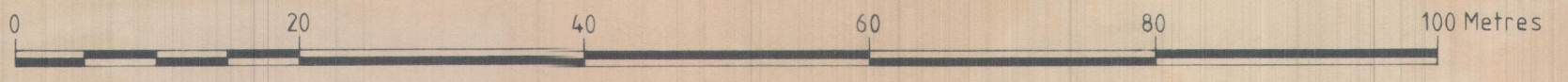


SPENCER

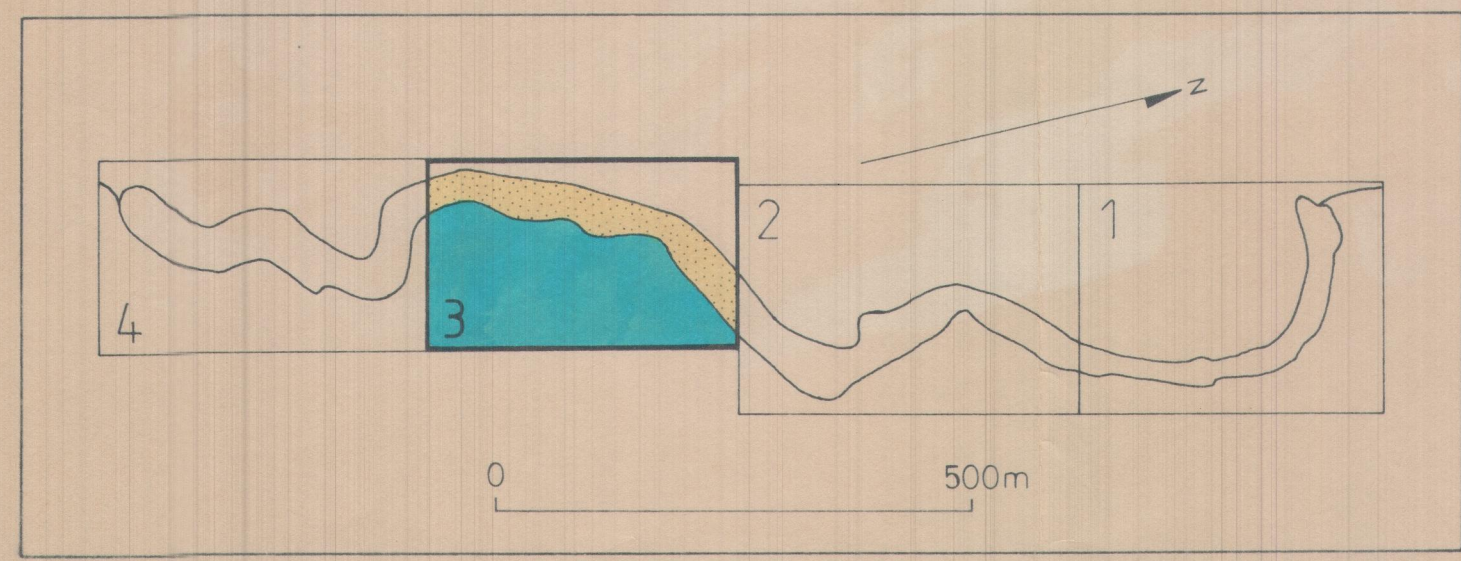
GULF

GEOLOGICAL MAP OF LIPSON COVE (NORTH)

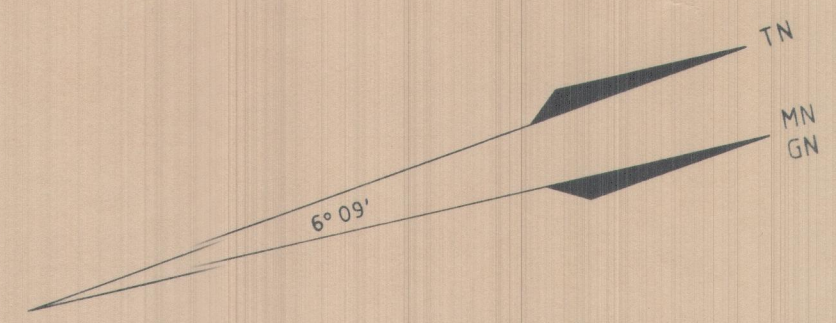
Sheet 3



Mapped and drawn by PHCohen, '82



Refer to Sheet 1 for legend



1200E

1400N

1500N

1600N

34°15'00"

1200E

05"

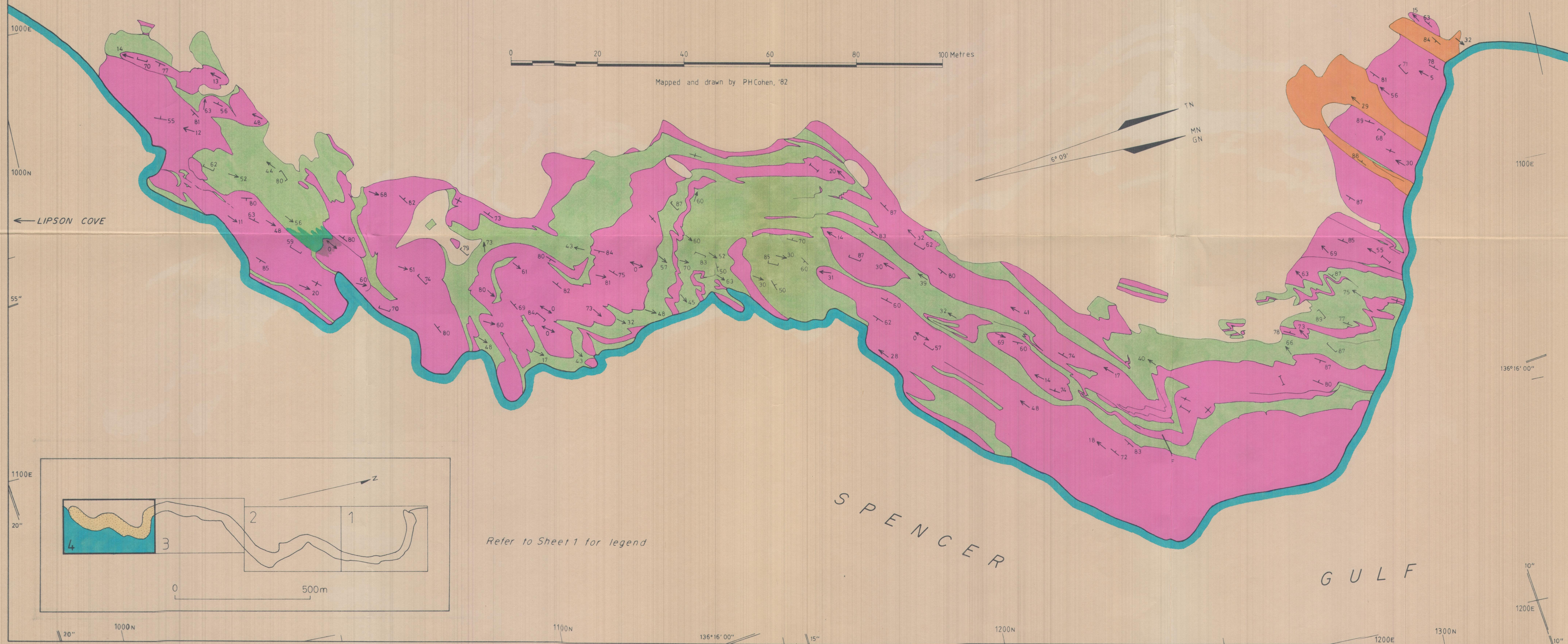
136°16'00"

10"

05"

GEOLOGICAL MAP OF LIPSON COVE (NORTH)

Sheet 4



Mapped and drawn by PH Cohen, '82

Refer to Sheet 1 for legend

SPENCER

GULF

