

ADELAIDE LAW REVIEW

Faculty Editors:

R. J. BAILEY
M. C. HARRIS

W. B. FISSE
F. P. KELLY

M. R. GOODE
C. TURNER

Adelaide Law Review Association:

Chairman: A. P. MOORE

Members: P. BATLEY

C. A. de RIDDER

J. D. ELLIOTT

W. M. ERICSON

D. G. GASZNER

R. GRAYCAR

S. I. KRIEGER

T. W. NAGEL

D. A. C. ROBERTSON

M. D. WALTER

Business Manager:

R. HUNTER

© Copyright 1980 by the University of Adelaide Law Review Association and each author with respect to his contribution.

CONTENTS

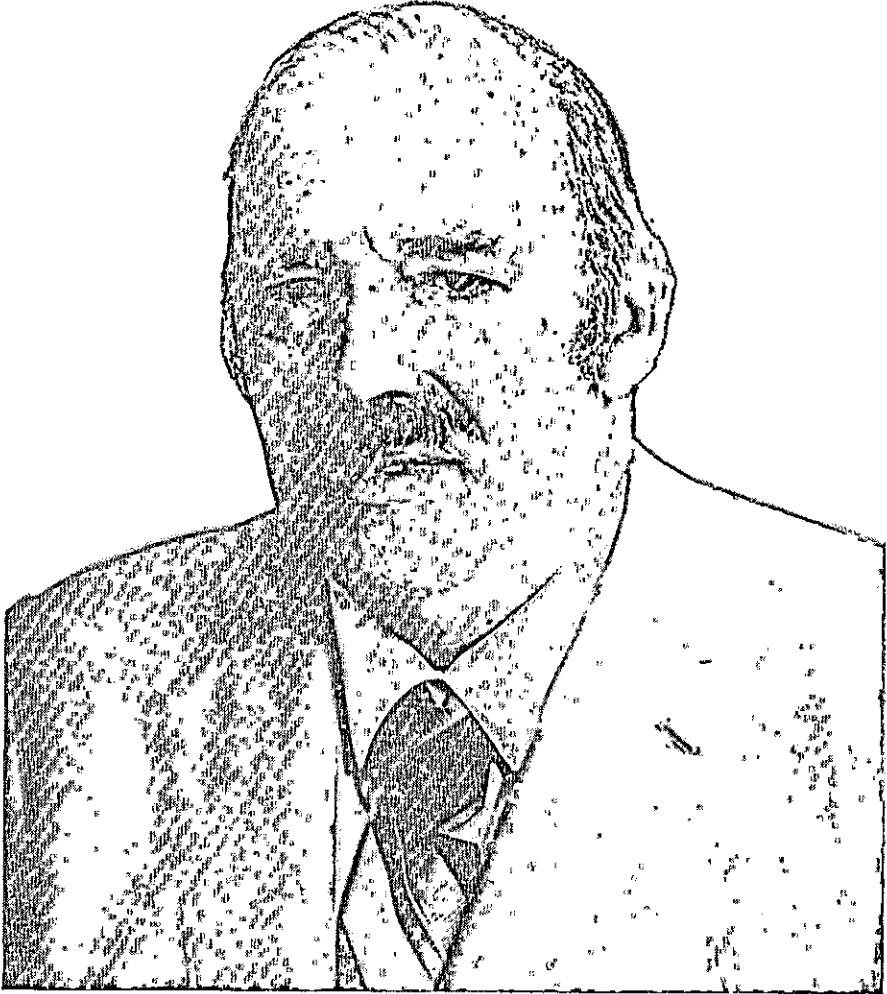
VOLUME 7

JANUARY 1980

NUMBER 1

ARTICLES

- 1 John Bray: the Man and the Judge - *Roma Mitchell and Peter Kelly*
- 7 John Bray in Context - - - - *Charles Bright*
- 17 Chief Justice Bray and the Conflict of Laws - - - - - *D. St. L. Kelly*
- 33 *Amoco v. Rocca*; an Anatonation - - *M. P. Ellinghaus*
- 41 Sentencing in South Australia: Emerging Principles - - - - - *Mary W. Daunton-Fear*
- 66 Depravity, Corruption and Community Standards - - - - - *Richard G. Fox*
- 79 Precedent in South Australia: the Hierarchic and the Heuristic - - - - *A. R. Blackshield*
- 138 The Evidentiary Bray - - - - *A. L. C. Ligertwood*



JOHN JEFFERSON BRAY, LL.D.
Chief Justice of the Supreme Court of South Australia 1967-1978
Chancellor of the University of Adelaide 1968-