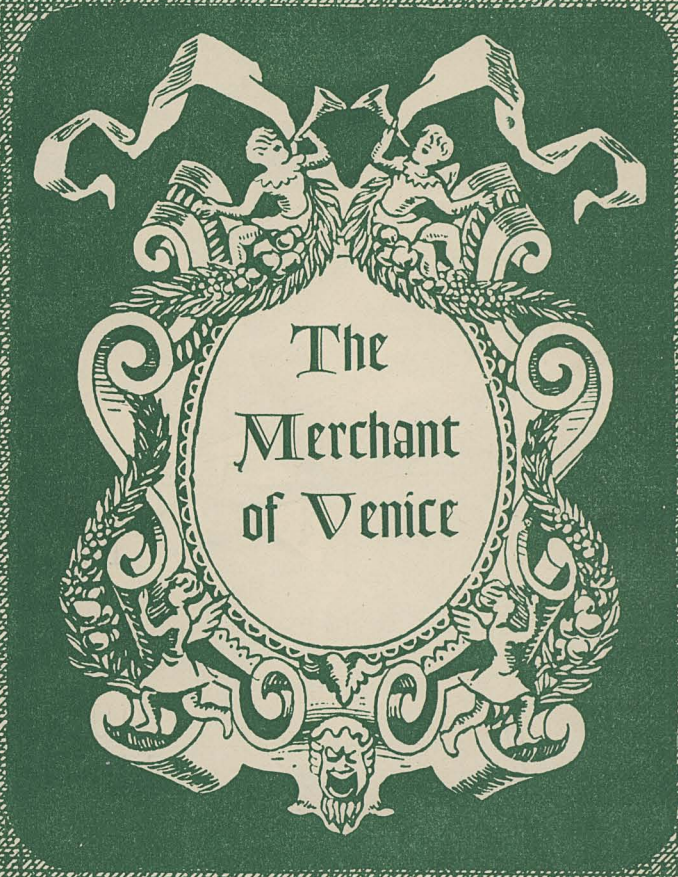


TSA/ MaTh

1949.1 ✓

Majestic Theatre

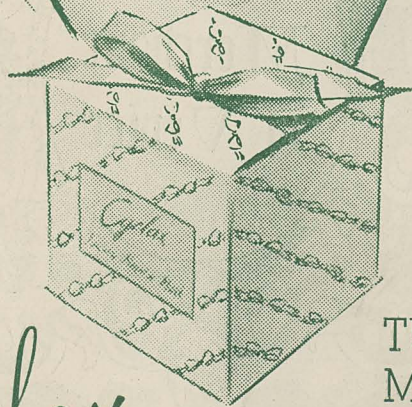
10149



PROGRAMME

MAJESTIC THEATRE

THE AUSTRALIAN DRAMATIC ART AND EDUCATION GUILD by
arrangement with SIR BENJAMIN FULLER proudly present



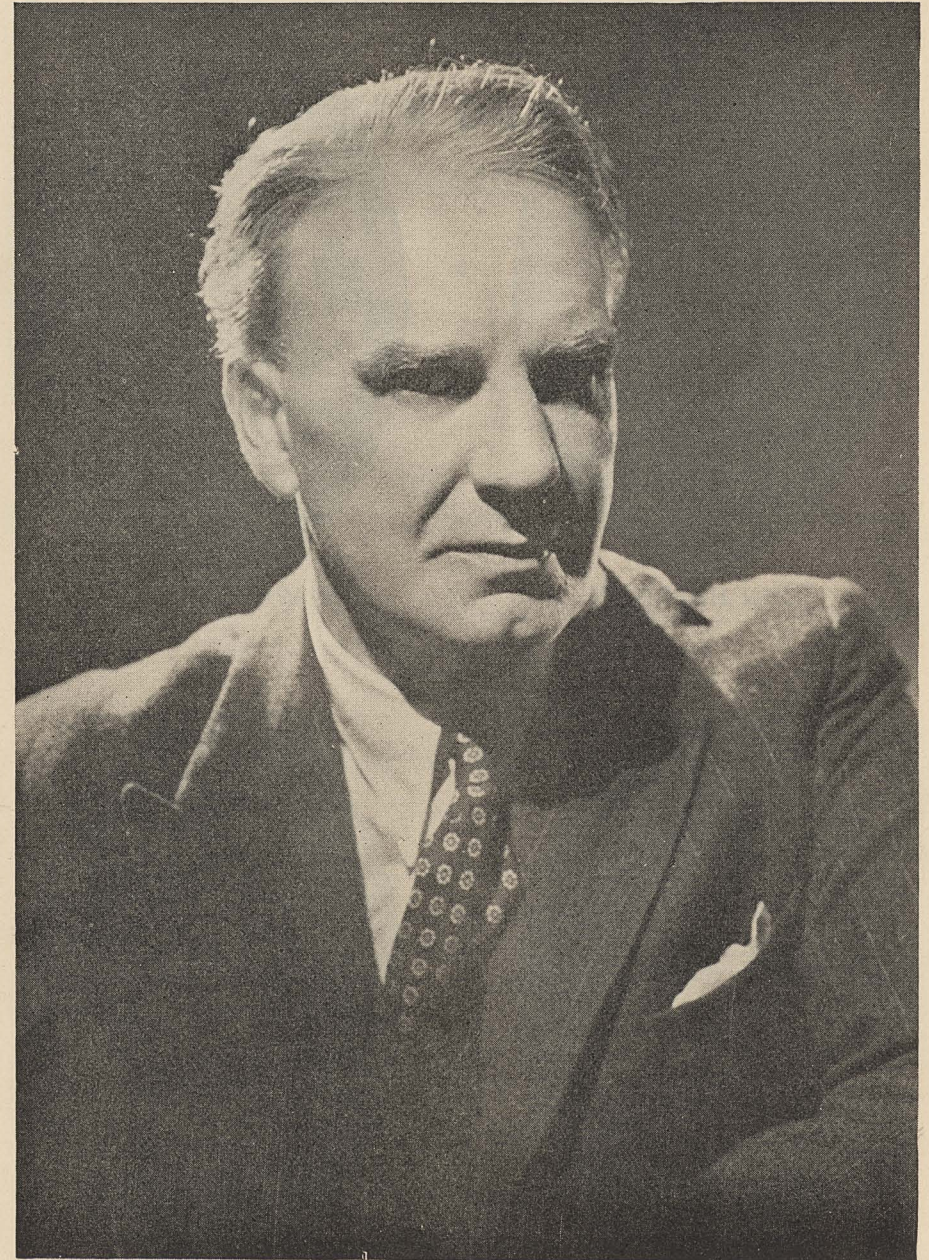
THE
MYER
EMPORIUM
(S.A.) LTD.

★
**TWENTY
MINUTE
MASK**

Cyclax

the 'double action' mask

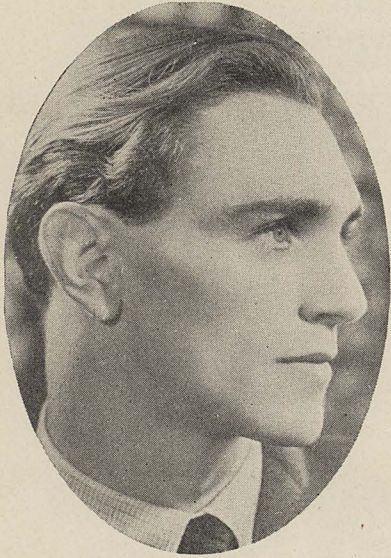
Cyclax Twenty Minute Mask, the "double action" formula, performs two duties . . . it acts as a quick stimulant and at the same time reconditions weary complexions. In a beribboned lilac container . . . at 19/- jar . . . sufficient for 19 applications. Ground Floor, Cyclax Counter.



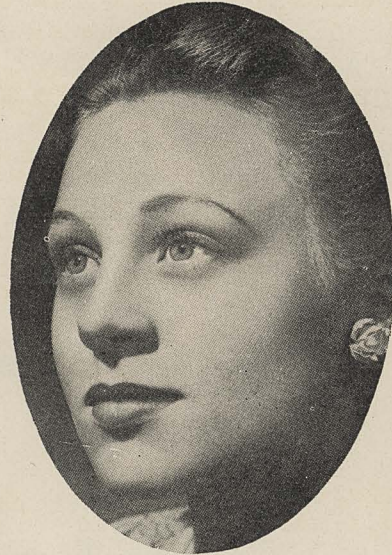
ANEW McMASTER

and his Company of Shakespearean Players selected from Stratford-upon-Avon

Personalities in McMaster Company



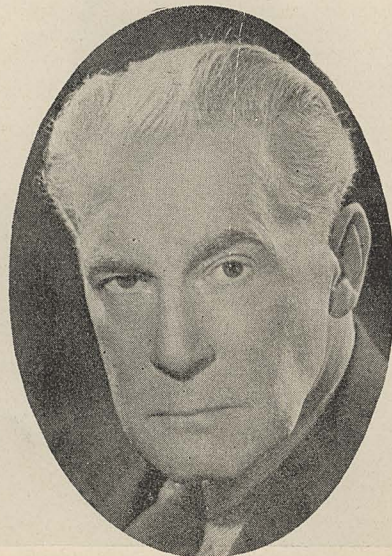
JOHN HARRISON



DAPHNE SLATER



DOROTHY WHEATLEY



ERIC MAXON

Tonight's presentation of "THE MERCHANT OF VENICE" is the fifth production under the direction of

THE AUSTRALIAN DRAMATIC ART and EDUCATION GUILD



WHAT IS THE GUILD? . . . Its legal "shape" is a non-profit Company formed with the official approval of the Attorney-General for the State of Victoria.

Membership will enable YOU to meet people like yourself who want to see the Australian Theatre develop to standards comparable with the best from overseas.

It will give YOU a chance to help select the Dramatic Companies and talent YOU want brought to Australia from overseas.

WHAT IS ITS MEMBERSHIP? . . . YOU and as many others who may be interested in the enjoyment and development of the Theatre in Australia.

WHAT WILL IT COST? . . . YOU can become a member for an annual subscription of 2/6, and you will save this many times over because of the CONCESSION PRICES available to you for admission to the performances YOUR Guild will be providing:

7/- seats for 5/-

5/- seats for 3/-

You WILL join, won't you—and tell your friends?

Application forms available from The Secretary, Australian Dramatic Art and Education Guild, Majestic Theatre, Adelaide.

Friday. 27th - May. 1949.

MAJESTIC THEATRE

The Australian Dramatic Art & Education Guild by arrangement with Sir Benjamin Fuller, K.B.

present

ANEW McMASTER

AND COMPANY

in

"The Merchant of Venice"

William Shakespeare

CHARACTERS (in order of their appearance):

ANTONIO (a Merchant of Venice)	-	PETER O'SHAUGHNESSY	SHYLOCK (a rich Jew)	- - - - -	ANEW McMASTER
SLANIO	}	LESLIE MOXON	LAUNCELOT GOBBO (servant to Shylock)	-	ERNEST LEITCH
SLARINO (Friends of Antonio and Bassanio)		COLM O'DOHERTY	OLD GOBBO (father to Launcelot)	- - -	WALTER PLINGE
GRATIANO		PAUL STEPHENSON	JESSICA (daughter to Shylock)	- - - - -	JUNE CLYNE
BASSANIO (Antonio's friend and suitor to Portia)		JOHN EDMUND	PRINCE OF MOROCCO	} (Suitors to Portia)	ERIC MAXON
LORENZO (in love with Jessica)	-	CHRISTOPHER McMASTER	PRINCE OF ARAGON		JOHN HARRISON
PORTIA (a rich heiress)	- - - -	DOROTHY WHEATLEY	DUKE OF VENICE	- - - - -	ERIC MAXON
NERISSA (her waiting maid)	- - - -	DAPHNE SLATER	TUBAL (a Jew friend to Shylock)	- - - -	HENRY BRADEN

PRODUCTION BY ANEW McMASTER

Final Production
of Season
"H A M L E T"

Synopsis of Scenes:

ACT I

Scene 1: Venice. A Street.
Scene 2: Belmont. A Room in Portia's House.
Scene 3: Same as Scene 1.

INTERVAL

ACT II

Scene 1: Belmont. A room in Portia's House.
Scene 2: Venice. A Street.
Scene 3: Belmont. A Room in Portia's House.
Scene 4: The Same.

INTERVAL

ACT III

Scene 1: A Court of Justice, Venice.
Scene 2: Belmont. Avenue to Portia's House.

Scenery designed by Jos Farrele and executed in the Princess Theatre (Melbourne) workshops by Jack Morgan, Thomas Dench and assistants. Painted by K. V. McGuinness.
Costumes designed by Marjorie McMaster.

MANAGEMENT—MAJESTIC THEATRE

Manager and Publicity	- - -	Thomas A. Lowe
Assistant Manager	- - -	Coreen Wilkinson
Treasurer	- - -	Dorothy Donnelly
Head Mechanist	- - -	J. Weyland
Head Electrician	- - -	Bert Dawson
Properties	- - -	R. Wade

ANEW McMASTER COMPANY

General Manager	- - -	Walter H. Humphries
Stage Manager	- - -	Ernest Leitch
Asst. Stage Manager	- - -	Colm O'Doherty

Orlando

GOLD MEDAL SHERRY

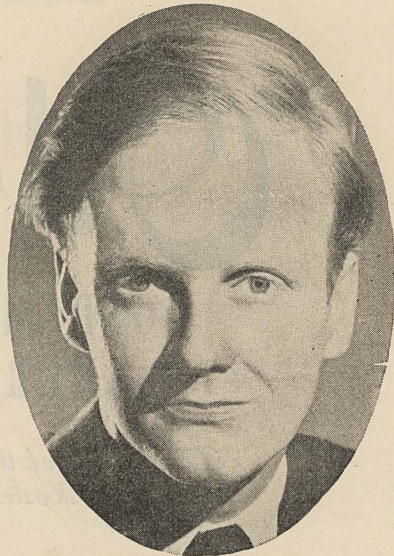
*The Choice of the
discerning Hostess*



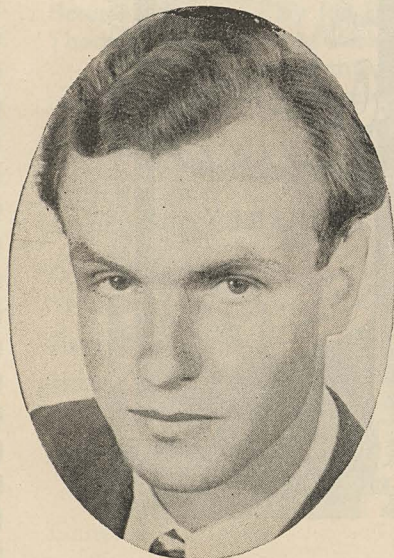
Personalities in McMaster Company (cont.)



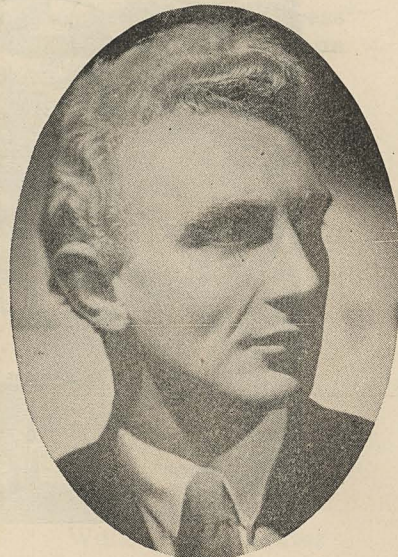
PAUL STEPHENSON



CHRISTOPHER McMASTER



COLM O'DOHERTY



JOHN EDMUND

Personalities in McMaster Company (cont.)



ERNEST LEITCH
Stage Manager



WALTER HUMPHRIES
General Manager

BOX PLAN and BOOKINGS

The plan is at the Majestic Theatre (Cent. 2366) and Allan's, always six days ahead.

FOR LATE RESERVATIONS

Ring the Majestic direct, Cent. 2366, but seats will not be held after 6.30 any evening.

PERMANENT SEATS

Applications will be received by the Management for the allocation of Permanent Seats. After you've enjoyed our show, select your seat and row, and advise the Management. These will be held for the night you desire for each of our Shows.

TANDY'S SPECIAL BOX

CHOCOLATES OF
DISTINCTION

ALWAYS APPRECIATED

H. H. TANDY, LTD.

142 GAWLER PLACE,
ADELAIDE

MAJESTIC THEATRE

THE AUSTRALIAN DRAMATIC ART AND EDUCATION GUILD
by arrangement with SIR BENJAMIN FULLER, K.B.,
proudly announce

THE FINAL PRODUCTION BY
ANEW McMASTER

and his Company of Shakespearean Players

Commencing **FRIDAY, 3rd JUNE**

*'Othello',
Trilby',
Taming of the Shrew',
'St Angelo's'.* **"HAMLET"**

DEFINITELY FOR ONE WEEK ONLY

SPECIAL SCHOOL MATINEES

"THE MERCHANT OF VENICE"

SATURDAY - - - - - 28th MAY, at 2.15
TUESDAY - - - - - 31st MAY, at 2.15
WEDNESDAY - - - - - 1st JUNE, at 2.15

"HAMLET"

SATURDAY - - - - - 4th JUNE, at 2.15
TUESDAY - - - - - 7th June, at 2.15
WEDNESDAY - - - - - 8th JUNE, at 2.15

*Special Booking Arrangements available to
Schools and Colleges*