

Basso

Lentamente.

4 - 4

2 Takt
Klein

23

mf p

Τὴν Πῶ χω σὸν αἰ τὸ
μ' ἐπιμαρτίν

ξὶ πο ἀχ! γὰ ρά ὕ. ου
ψὺ - πο δά ποῦ ἤλασε γρὰυ

Ande Solo
(in 6)
in 6

stent.
p
pp.

ὁ ἄγ. οὐ εἶ βα

20 - 20

ὁ λαρ τιν
ἀρρ - τὸ
3 - 2

ap

fa

u'n iade lov Pax vi-da zepi xaxa dap sa.

rall.
stcut.

tempo.

na' oax i za ra jan yr o z-mos oob xe

dim

yi pu. Star do wapa di po-p' um u dar' a uox

mf
 μου
 εὐλογοῦσά σου τὸ ὄνομα σου τὸ ἅγιον σου τὸ μεγαλύνουσά σου

mf
 Χριστοῦ.
 καὶ ἐπιπέμψας τὸ ἅγιον σου τὸ πνεῦμα σου

stent.

lunga
 ῥα ἡμεῖς
 ἠρώμεθα σου τὸ ἅγιον σου τὸ πνεῦμα σου

atempo (con anima)

mf
 ἵνα ἡμεῖς ἁγιασθῶμεν

stento.

ap

First system of handwritten musical notation. The vocal line begins with a fermata on a note, followed by the lyrics "nos pou. o' e pi ra o' clain ap'os pou. da' u' ra pu lu". The piano accompaniment features chords and melodic lines in both hands.

Second system of handwritten musical notation. The vocal line includes the lyrics "ra da' u' ra pu lu ra da' u' ra pu lu". Above the first measure is the marking "p." and above the last measure is "rall.". The piano accompaniment continues with chords and melodic lines.

Third system of handwritten musical notation. The vocal line starts with the word "ra." and a fermata. The piano accompaniment includes a section marked "Lento" in blue ink. A large signature, possibly "Pusa", is written across the bottom right of the system.

Allo Moderato.

A-5-

27

Handwritten musical notation for the first system, featuring a treble and bass clef with a 12/8 time signature. The music includes dynamic markings such as *mf* and *ff*.

Handwritten musical notation for the second system, continuing the piece with various rhythmic patterns and chord structures.

Handwritten musical notation for the third system, which includes a large red bracket and some additional markings.

Coro *Dejane*
mp *moderato*

Handwritten musical notation for the choral section, including lyrics in Greek: *Ná ñ ðíççun or orapda ru* and *ti xapa ti xapa*. The notation is arranged in staves for Soprano, Tenor, Bass, and Piano.

2A

ap

Alporna

Quarta

Tenore

Basso

Piano

Alporna: $\dot{\lambda}\omega\ \nu\acute{\rho}\epsilon\iota\delta\alpha\ \nu\alpha\delta\alpha\lambda\epsilon\gamma\eta$
 Quarta: $\nu\alpha\iota\ \sigma\alpha\ \rho\acute{\alpha}\ \mu\alpha\sigma\alpha\pi\alpha$
 Tenore: $\zeta\eta\gamma\omega\lambda\iota\ \zeta\eta\gamma\omega\lambda\iota$
 Basso: $\sigma\acute{\omega}\nu\ \mu\iota\ \acute{\alpha}\lambda\lambda\iota\prime$
 Piano: $\nu\alpha\iota\ \delta\omicron\mu\omicron\sigma\omicron\ \rho\omicron\delta\iota\ \acute{\alpha}\gamma\gamma\epsilon\lambda\omicron\varsigma$

Rall. allegretto come prima.

Basso.

Basso: $\rho\omicron\sigma\omega\ \nu\iota\epsilon\omega$
 Piano: $\sigma\iota\gamma\eta\ \sigma\omicron\sigma\omicron\lambda\iota\sigma\tau\omicron\gamma\eta$

Andante Molto Sost^o 2^a Volta

45

Πο-τε να εις δεξις τω ιωσ.

Παπακουβας

Furrier

Coro.

Piano

Να γινη το ουν.

mf ηγλασ ιοριζου

mf

Vari

Piano

Allegro

Allegro

να ι. us *do* ναι χριστα να αυρ οι - *ro.* ην ιε ιερων δαπα δε

οι ορα *mas* τωι τω ου αλωχου *mi* *ro.* ην ιερων δαπα δε

ap

δουλον σου. μι ο οκλασ θα πας ο ρι η κα pin lasso, sus lu lu kw.

Handwritten musical score for the first system. It consists of five staves. The top two staves are vocal lines with lyrics in Greek and Latin. The bottom three staves are piano accompaniment. A red diagonal line is drawn across the middle of the system. The piano part includes a section marked 'mf'.

piano

ρα Πας ψη ρη ηη χαρ πα να ρις lu na ρις lu na

tenor
soprano
bass

piano

Handwritten musical score for the second system. It consists of five staves. The top two staves are vocal lines with lyrics in Greek and Latin. The bottom three staves are piano accompaniment. The piano part includes a section marked 'mf'.

dopo il Pitornello

Attacca

Segue

Attaca subito
alcorde Sib.

attacca

Organ
 Corno
 Fagotto
 Piano

~~Proprio orosa~~

Maestoso.

apiacere.

~~Epi no pa xa pa nes in pas to sos pou nai soo lu
 no 60 65 yinw 670x11 68~~

Maestoso.

armonice.

~~Piano~~

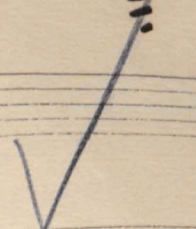
32

Handwritten musical notation on a single staff. The notes are mostly quarter and eighth notes. Below the staff is the Greek text: *Χριστὸς ἀποθνήσκει ὑπὲρ ἡμῶν καὶ σα* *Χριστὸς ἀνοίγει ἡμῶν τὰς*

Handwritten musical notation for a piano accompaniment, consisting of two staves. The left hand has a bass clef and the right hand has a treble clef. The notes are mostly quarter and eighth notes. There is a blue 'bb' marking in the left hand.

Handwritten musical notation on a single staff. The notes are mostly quarter and eighth notes. Below the staff is the Greek text: *Χριστὸς ἀνοίγει ἡμῶν τὰς πόρτας ἡμῶν καὶ δόξα καὶ τιμὴ*

Handwritten musical notation for a piano accompaniment, consisting of two staves. The left hand has a bass clef and the right hand has a treble clef. The notes are mostly quarter and eighth notes. There is a blue 'leggi' marking above the right hand and a blue 'p' marking below the left hand.



Handwritten musical notation on a single staff. The notes are mostly quarter and eighth notes. Below the staff is the Greek text: *ἀσθενῶν ἡμῶν ὑπὲρ ἡμῶν καὶ ἡμῶν τὰς πόρτας ἡμῶν καὶ δόξα καὶ τιμὴ*

Handwritten musical notation for a piano accompaniment, consisting of two staves. The left hand has a bass clef and the right hand has a treble clef. The notes are mostly quarter and eighth notes. There is a blue 'Conde' marking above the right hand.

Tring

ὶ γὰρ ἔμαρτι σου ἕ-ρω ρά ψέρω χα

Piano

Tring

πα γὰρ ἔ σου γὰρ πρ-ω σου οὐ γὰρ οὐ -

Piano

πα.

Vilini

Mou^{to} di Valse.

stent.
 Fiora clor
 clor dia
 pu por sa - ra

rall.
stent.
con anima.

Detailed description: This system contains the first two staves of the musical score. The top staff is a vocal line in 3/4 time, starting with a fermata and the lyrics 'Fiora clor clor dia pu por sa - ra'. The bottom staff is a piano accompaniment with two staves, featuring triplet patterns in the first two measures and a more rhythmic accompaniment thereafter. Performance markings include 'stent.' above the first measure and 'rall.' above the first measure of the piano part. A red number '1' is written above the first measure of the vocal line.

rall.
 Fiora an - do - ria Fiora tou dia ra di

tempo

Rall. p
dolce
p

Detailed description: This system contains the third and fourth staves. The vocal line continues with 'Fiora an - do - ria Fiora tou dia ra di'. The piano accompaniment continues with a similar rhythmic pattern. Performance markings include 'rall.' above the first measure of the vocal line and 'tempo' above the second measure. A red number '4' is written above the first measure of the piano part, and a red number '5' is written above the second measure. A red number '6' is written above the first measure of the vocal line in the second staff, and a red number '7' is written above the second measure. A red number '8' is written above the fourth measure of the vocal line. The word 'dolce' is written below the piano part, and a 'p' dynamic marking is present.

na por i - xour rna - ra hi di mi por

pesante

Detailed description: This system contains the fifth and sixth staves. The vocal line continues with 'na por i - xour rna - ra hi di mi por'. The piano accompaniment features a change in texture, with a more prominent bass line. Performance markings include 'pesante' written below the piano part. Red numbers '9', '10', '11', '12', and '13' are written above the measures of the piano part and vocal line respectively.

Handwritten musical score for the first system. The vocal line consists of five measures with the following lyrics: *in oia - oia sto bro ra - los xa so*. The piano accompaniment is written in two staves. Red numbers 14, 15, 16, 17, and 18 are written below the vocal line. A red bracket spans measures 14 and 15.

Handwritten musical score for the second system. The vocal line consists of five measures with the following lyrics: *ra - pe li si mu - pos hi - spo ora -*. The piano accompaniment is written in two staves. Red numbers 19, 20, 21, 22, and 23 are written below the vocal line. The word *rall.* is written above the piano accompaniment in measures 22 and 23. A red bracket spans measures 22 and 23.

Handwritten musical score for the third system. The vocal line consists of five measures with the following lyrics: *- nai mo di - ge po na eia me oin a ei*. The piano accompaniment is written in two staves. Red numbers 24, 25, 26, 27, and 28 are written below the vocal line. A blue *p* (piano) marking is written above the first measure of the piano accompaniment. A blue *f* (forte) marking is written above the fifth measure of the piano accompaniment.

ap

Handwritten musical score for the first system. It consists of a vocal line and a piano accompaniment. The vocal line has the lyrics "Vi non po-ola ora — ma vi". The piano accompaniment features a treble and bass clef with various notes and rests. There are red markings above the vocal line, including a double bar line and a sharp sign. Red numbers "29" and "30" are written above the piano accompaniment. A red double bar line is also present in the piano accompaniment.

Handwritten musical score for the second system. The vocal line has the lyrics "- ma du õpor gia nai xa — — po — — xw xa — — pu". The piano accompaniment continues with treble and bass clefs. There are blue markings above the vocal line, including a slur and a '6' above a note. A blue 'p' is written below the piano accompaniment.

Handwritten musical score for the third system. The vocal line has the lyrics "ẽ — xw xa pu, giau lo — na di ra oõjo". The piano accompaniment continues with treble and bass clefs. There are blue markings above the vocal line, including a slur and a 'p' below a note. A blue 'p' is also written below the piano accompaniment.

Handwritten musical notation on a single staff with lyrics below it. The lyrics are: yw - vw lo' di yw - vw oav a' ya.

Handwritten musical notation on a grand staff (treble and bass clefs). The notation is partially crossed out with a large red 'X'. Above the treble clef staff, there are handwritten annotations: a red sharp sign (#) with the word "tar" written above it, and a blue sharp sign (#) with the word "rall." written above it. Below the bass clef staff, there are handwritten annotations: "- in 3 -" and "meno". The lyrics below the treble clef staff are: oav - ja oav - oav a' - ya oav.

Handwritten musical notation on a grand staff. The notation is partially obscured by a large, light-colored stain. Above the treble clef staff, there is a handwritten annotation: "I^o Tempo." with a red vertical line pointing to a specific measure. The lyrics below the treble clef staff are: oav a' ya oav. oav oav y' e - pw.

rall. *rall.* *f*

Pa ter pa - ter . de us de us pi - ter ag - na

2 3 4 5 6

o mi - nis ter pro pa - tris de

7 8 9 10

pa - tris de us pa - tris de us pi - ter

11 12 13 14 15

φέρων τί ποταῖ — ρα ἕρι χι — αἶ πα παυ

16 17 18 19 20

rall.

ἀά — μου λά χρο σά σὺν ἡμῶν τί ἴσθ

21 22 23 24 25

sol

ἔ — χουν λά φύλα ὄ λαν ἡμῶν πα λά φυ

26 27 28 29 30