

Eucalyptus camaldulensis (river red gum)
**Biogeochemistry: An Innovative Tool for Mineral
Exploration in the Curnamona Province and
Adjacent Regions**

Karen A. Hulme, B.Env.Sc (Hons)



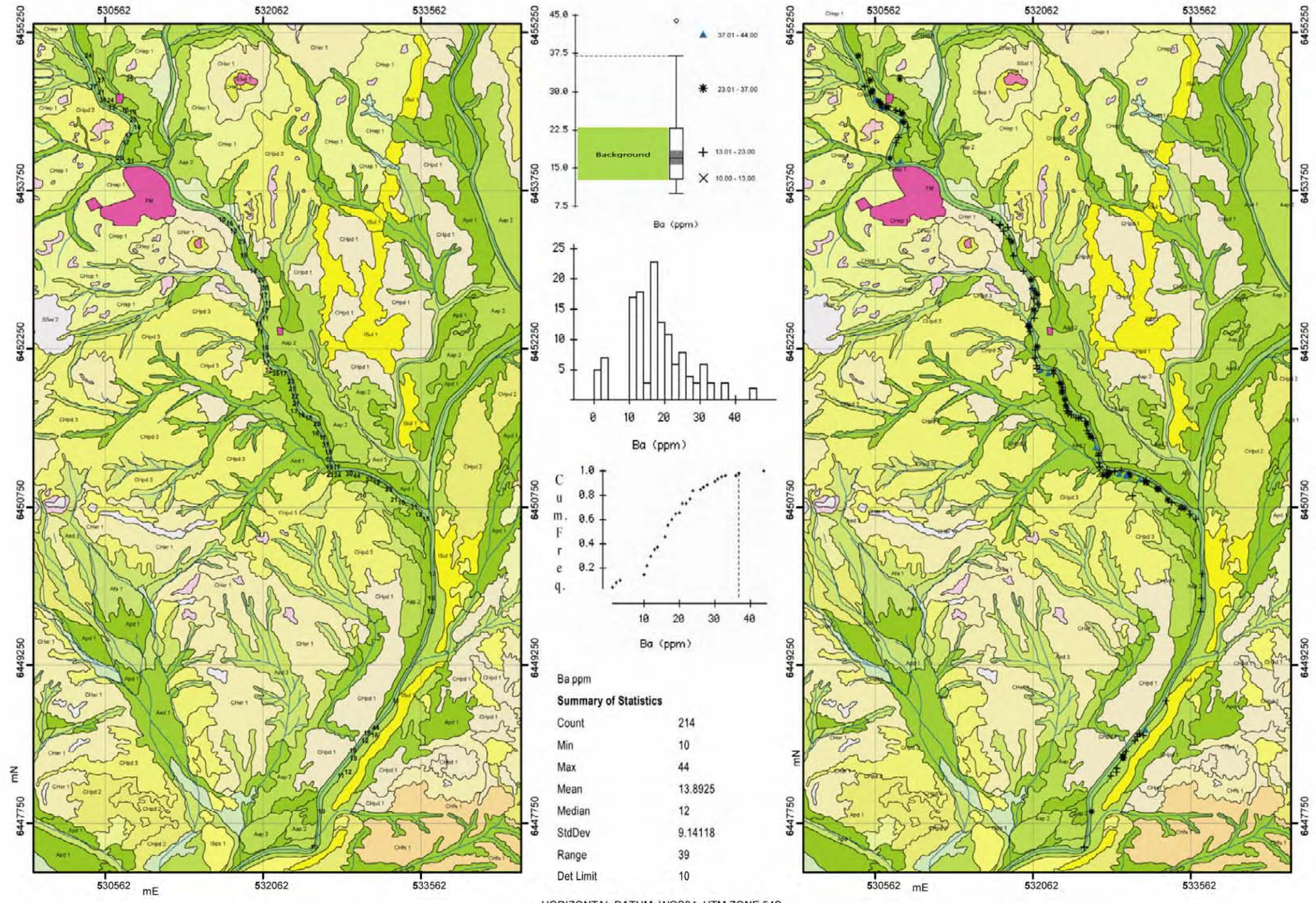
Geology and Geophysics
School of Earth and Environmental Sciences
The University of Adelaide
April 2008

APPENDIX H

Pine creek (Pinnacles) *E. camaldulensis* biogeochemical

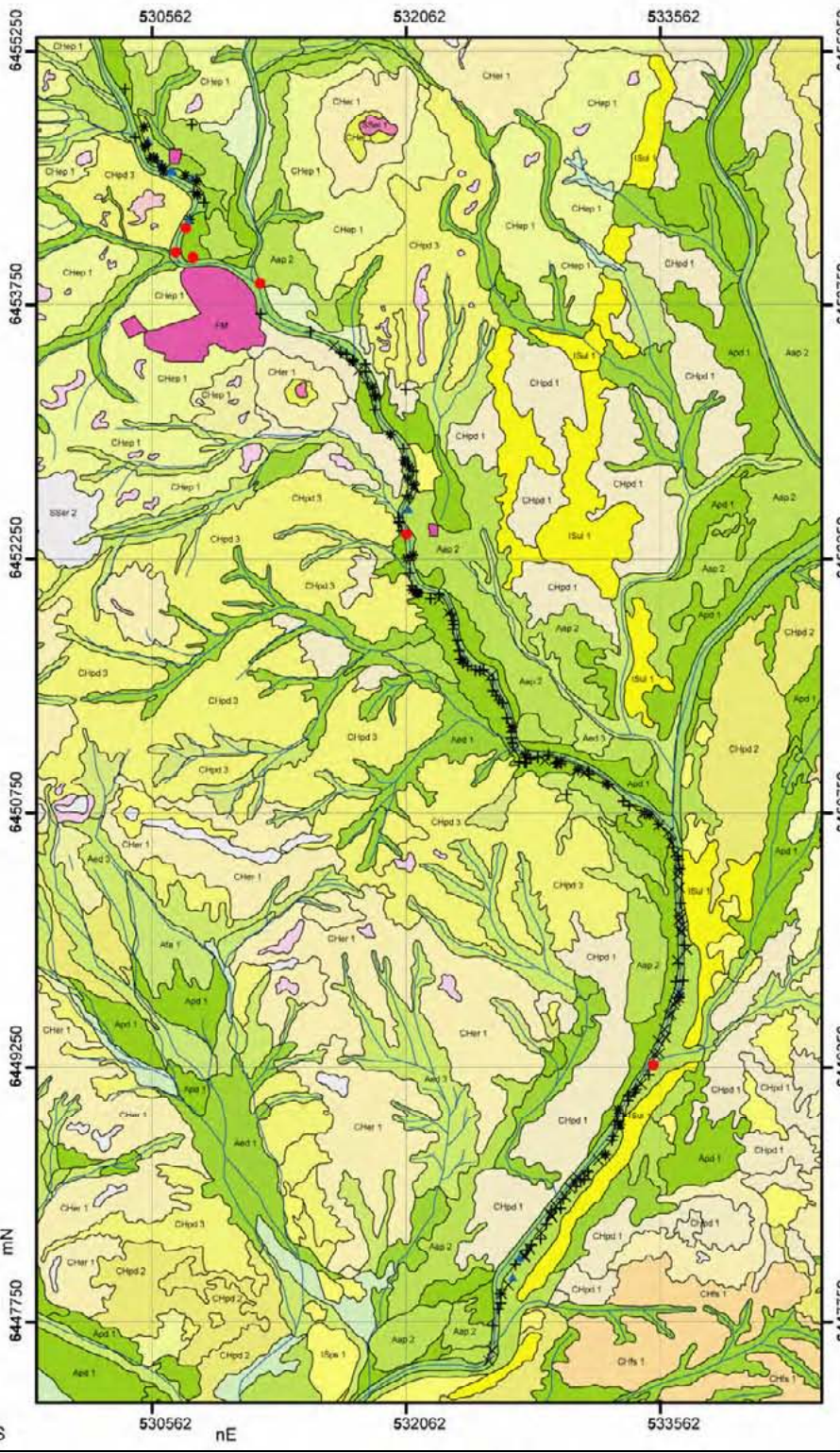
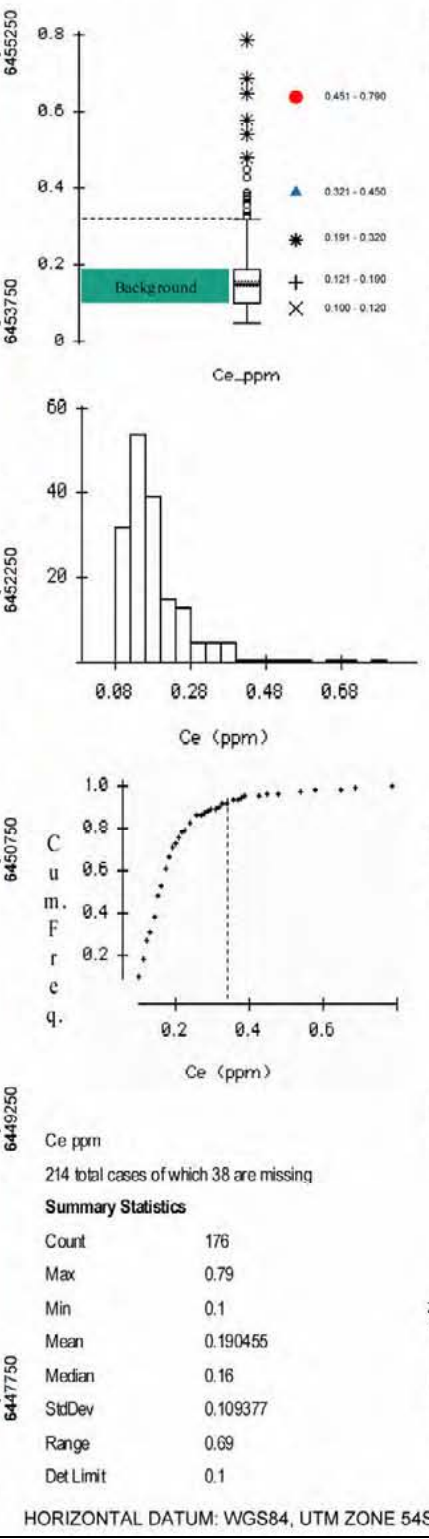
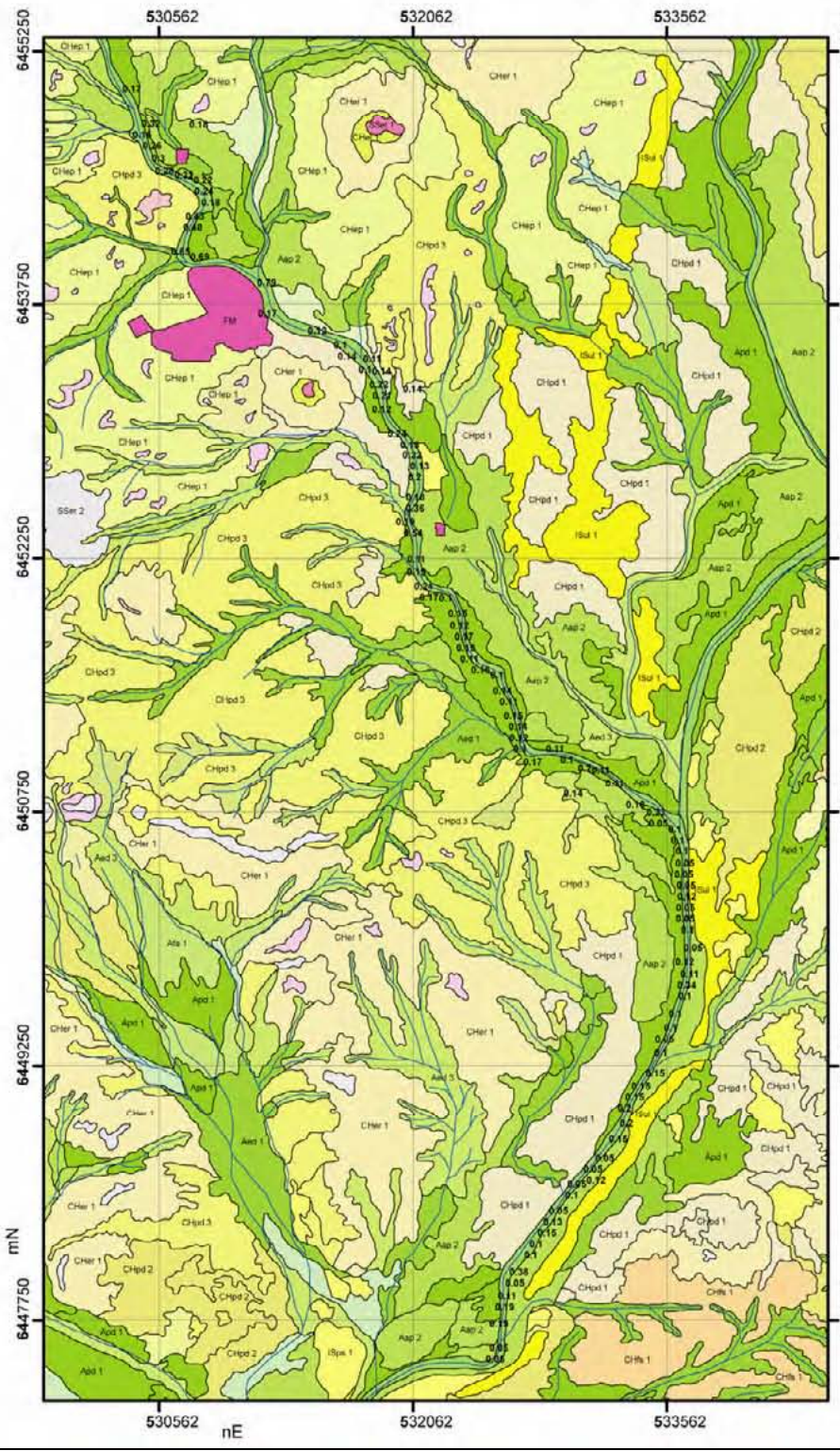
maps

E. camaldulensis (leaves) Biogeochemistry Pine Creek Broken Hill W/NSW - (Ba)



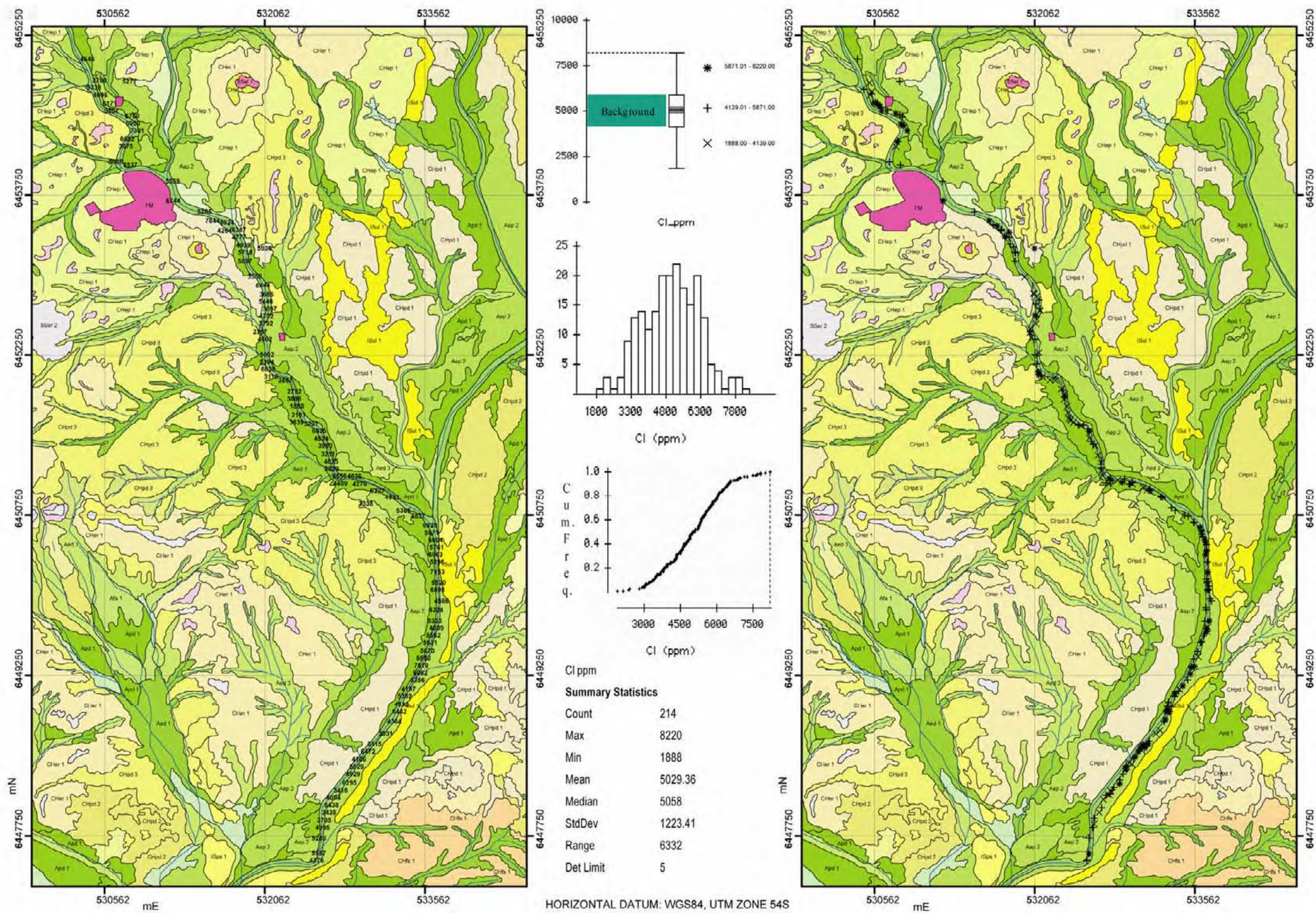
Raw data and spatial distribution of detectable Ba in *E. camaldulensis* (leaves) down Pine Creek with accompanying boxplots, histogram, cumulative frequency plot and summary statistics.

E. camaldulensis (leaves) Biogeochemistry Pine Creek Broken Hill W/NSW - (Ce)



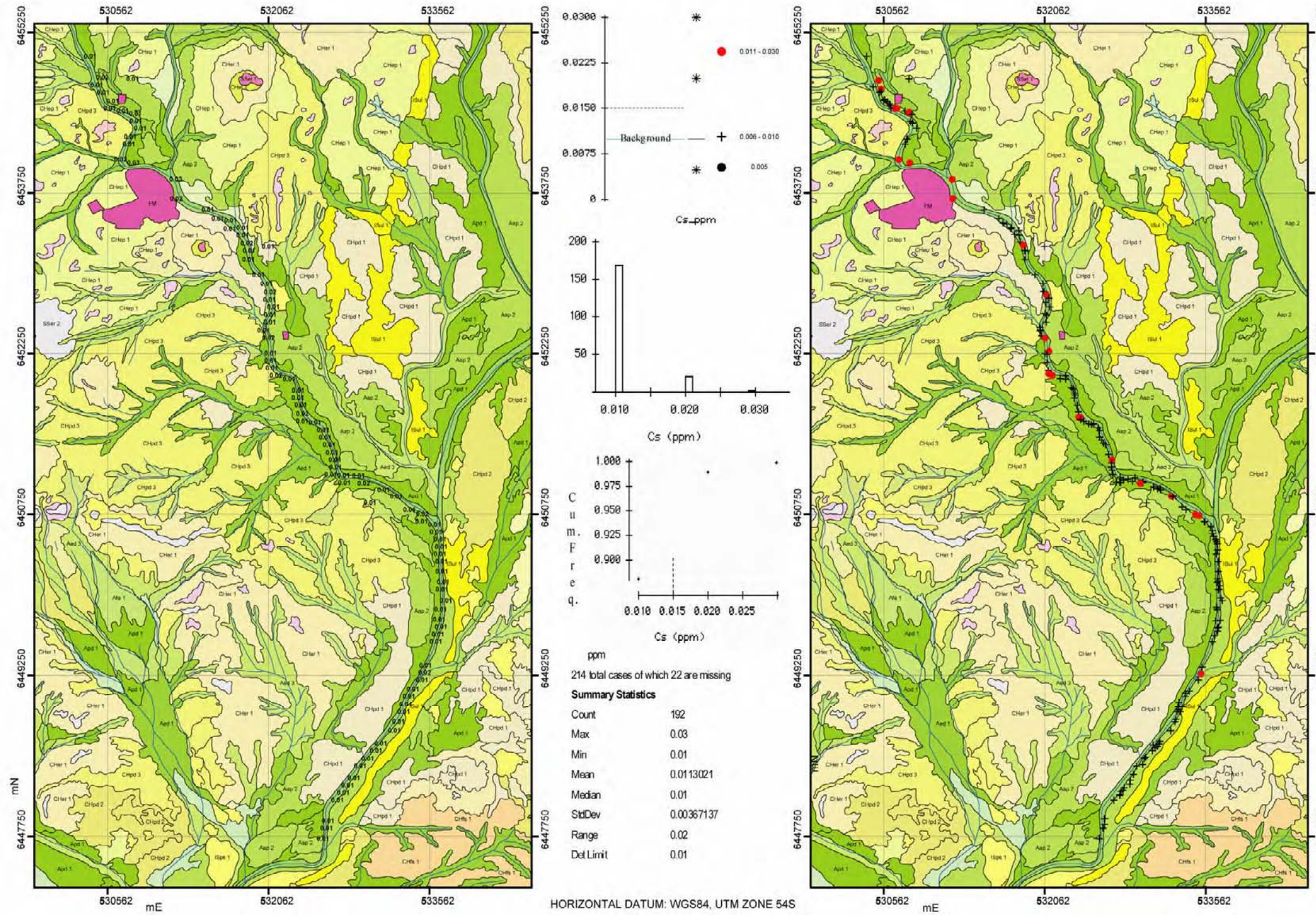
Raw data and spatial distribution of detectable Ce in *E. camaldulensis* (leaves) down Pine Creek with accompanying boxplots, histogram, cumulative frequency plot and summary statistics.

E. camaldulensis (leaves) Biogeochemistry Pine Creek Broken Hill W/NSW - (Cl)



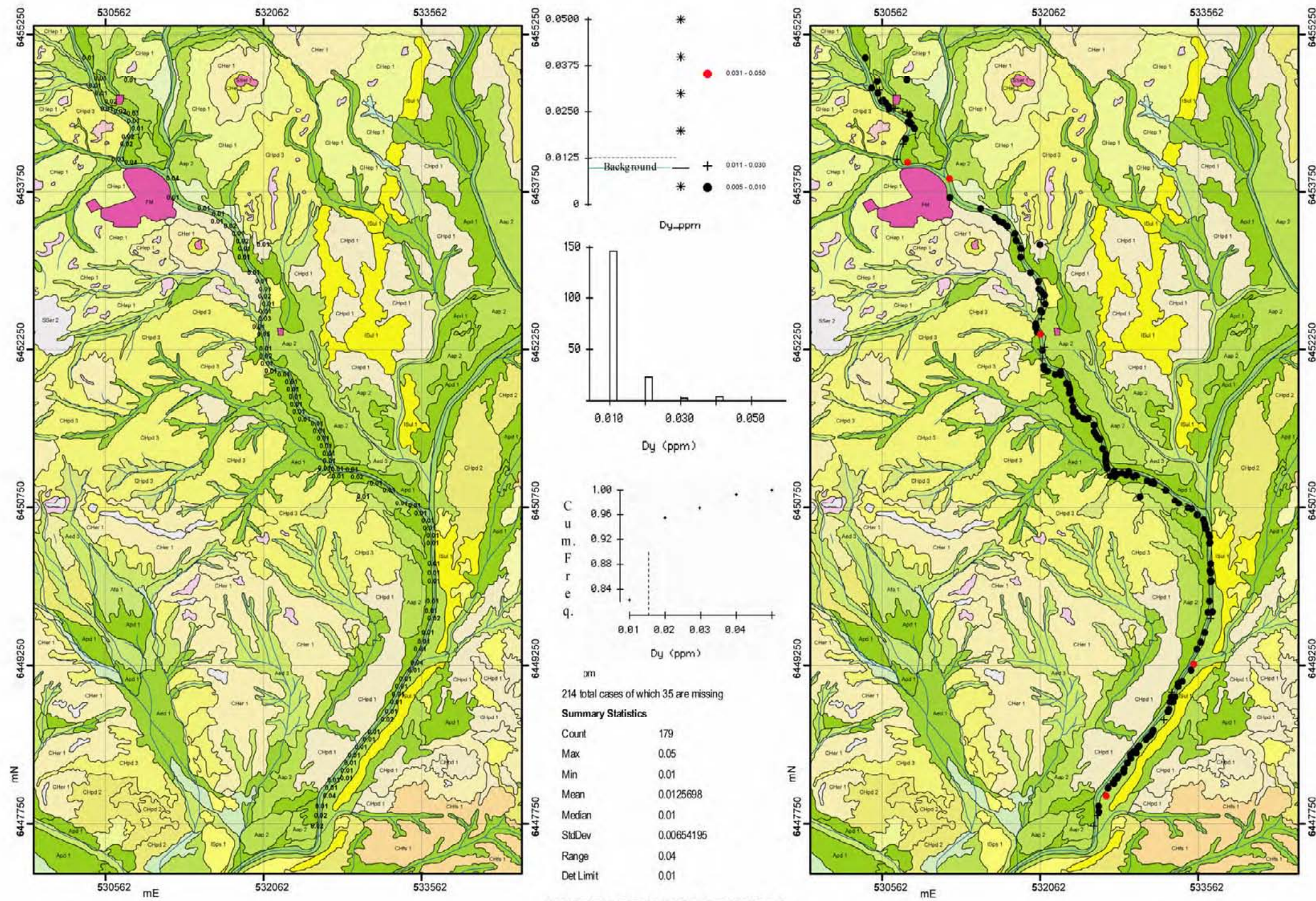
Raw data and spatial distribution of detectable Cl in *E. camaldulensis* (leaves) down Pine Creek with accompanying boxplots, histogram, cumulative frequency plot and summary statistics.

E. camaldulensis (leaves) Biogeochemistry Pine Creek Broken Hill W/NSW - (Cs)



Raw data and spatial distribution of detectable Cs in *E. camaldulensis* (leaves) down Pine Creek with accompanying boxplots, histogram, cumulative frequency plot and summary statistics.

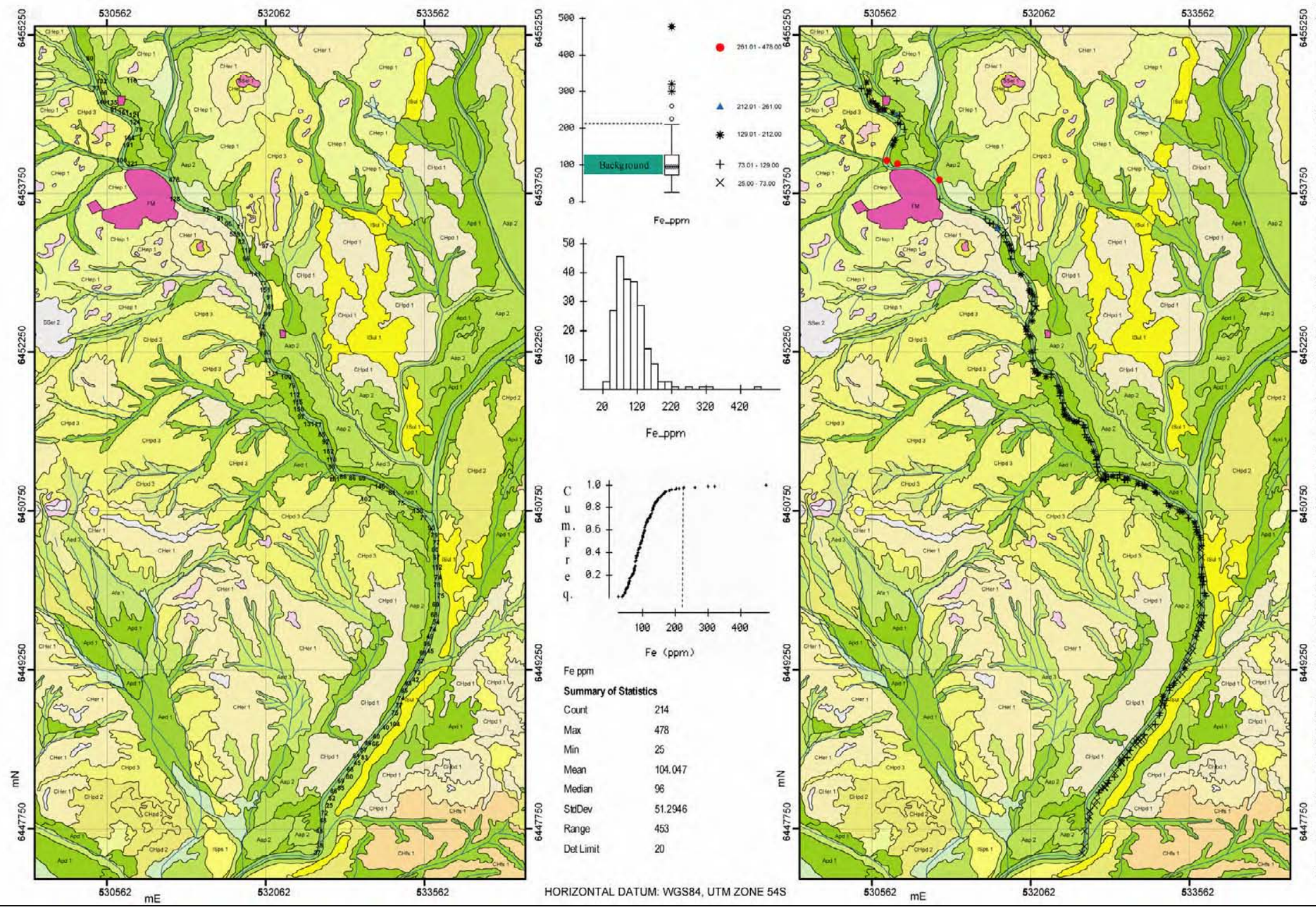
E. camaldulensis (leaves) Biogeochemistry Pine Creek Broken Hill W/NSW - (Dy)



HORIZONTAL DATUM: WGS84, UTM ZONE 54S

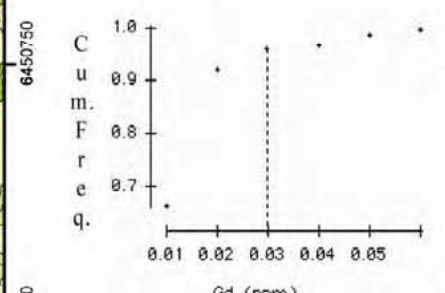
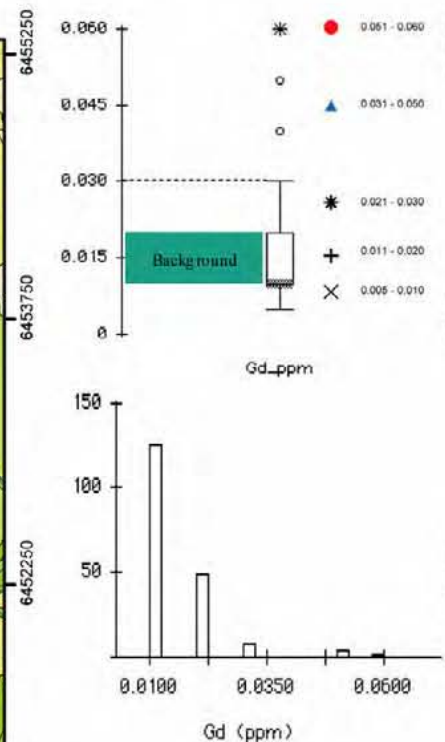
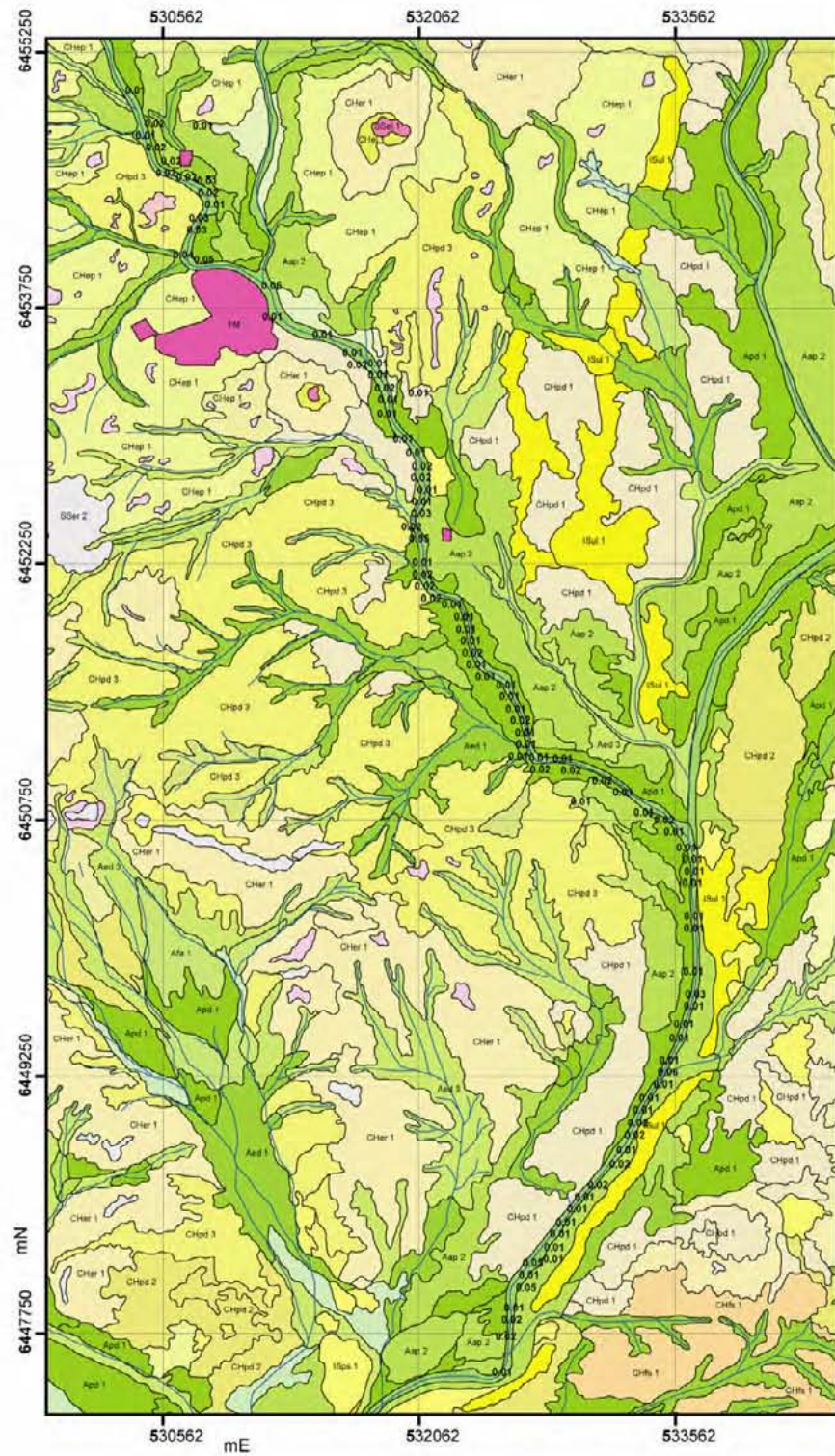
Raw data and spatial distribution of detectable Dy in *E. camaldulensis* (leaves) down Pine Creek with accompanying boxplots, histogram, cumulative frequency plot and summary statistics.

E. camaldulensis (leaves) Biogeochemistry Pine Creek Broken Hill W/NSW - (Fe)



Raw data and spatial distribution of detectable Fe in *E. camaldulensis* (leaves) down Pine Creek with accompanying boxplots, histogram, cumulative frequency plot and summary statistics.

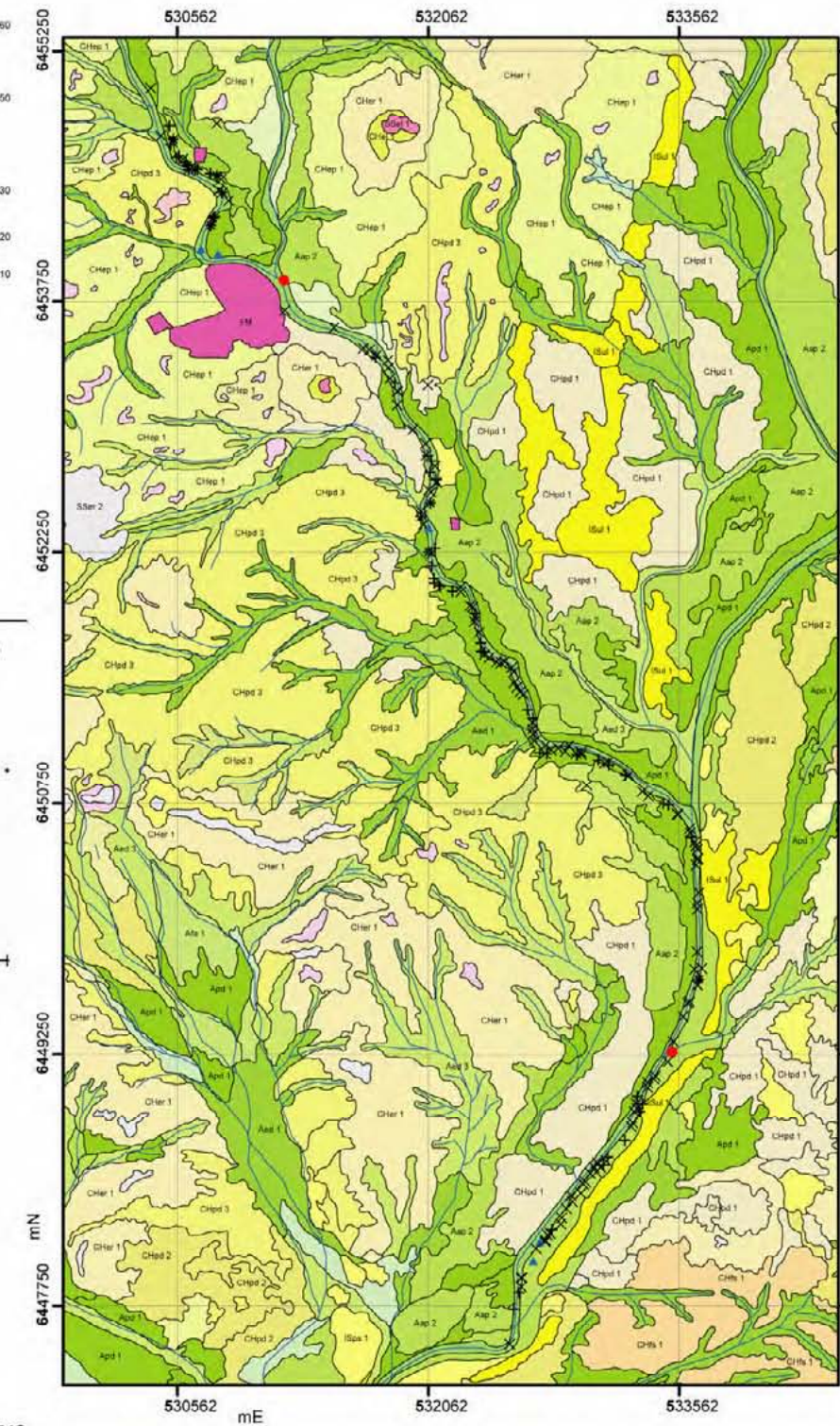
E. camaldulensis (leaves) Biogeochemistry Pine Creek Broken Hill W/NSW - (Gd)



Gd ppm
214 total cases of which 24 are missing

Summary Statistics

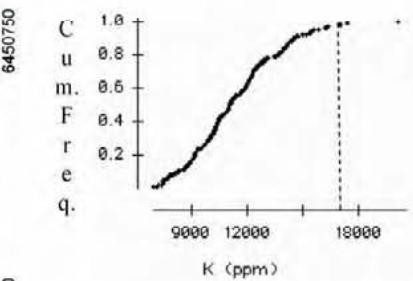
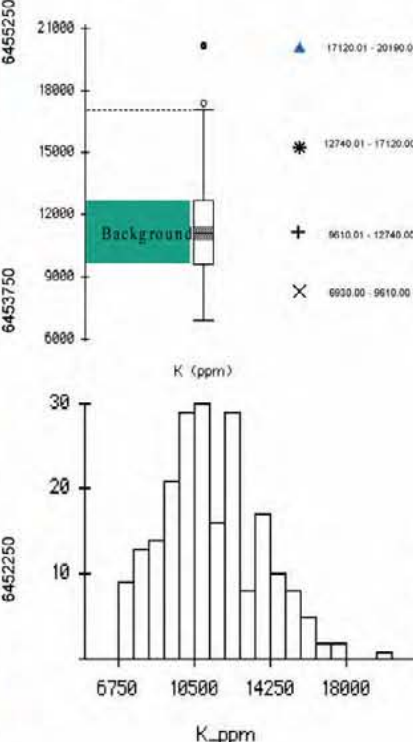
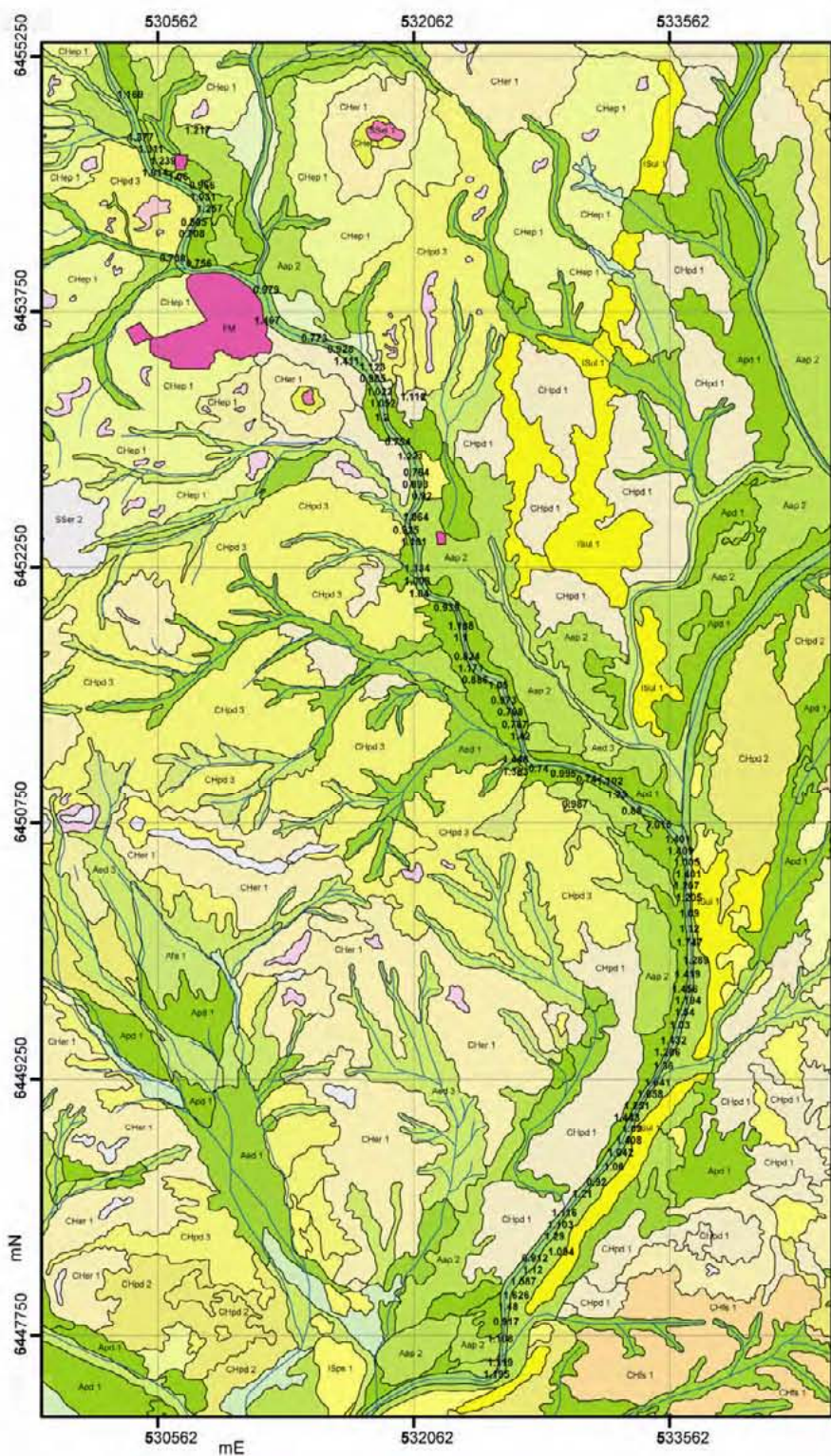
Count	190
Max	0.06
Min	0.01
Mean	0.0149474
Median	0.01
StdDev	0.00912856
Range	0.05
Det Limit	0.01



Raw data and spatial distribution of detectable Gd in *E. camaldulensis* (leaves) down Pine Creek with accompanying boxplots, histogram, cumulative frequency plot and summary statistics.

HORIZONTAL DATUM: WGS84, UTM ZONE 54S

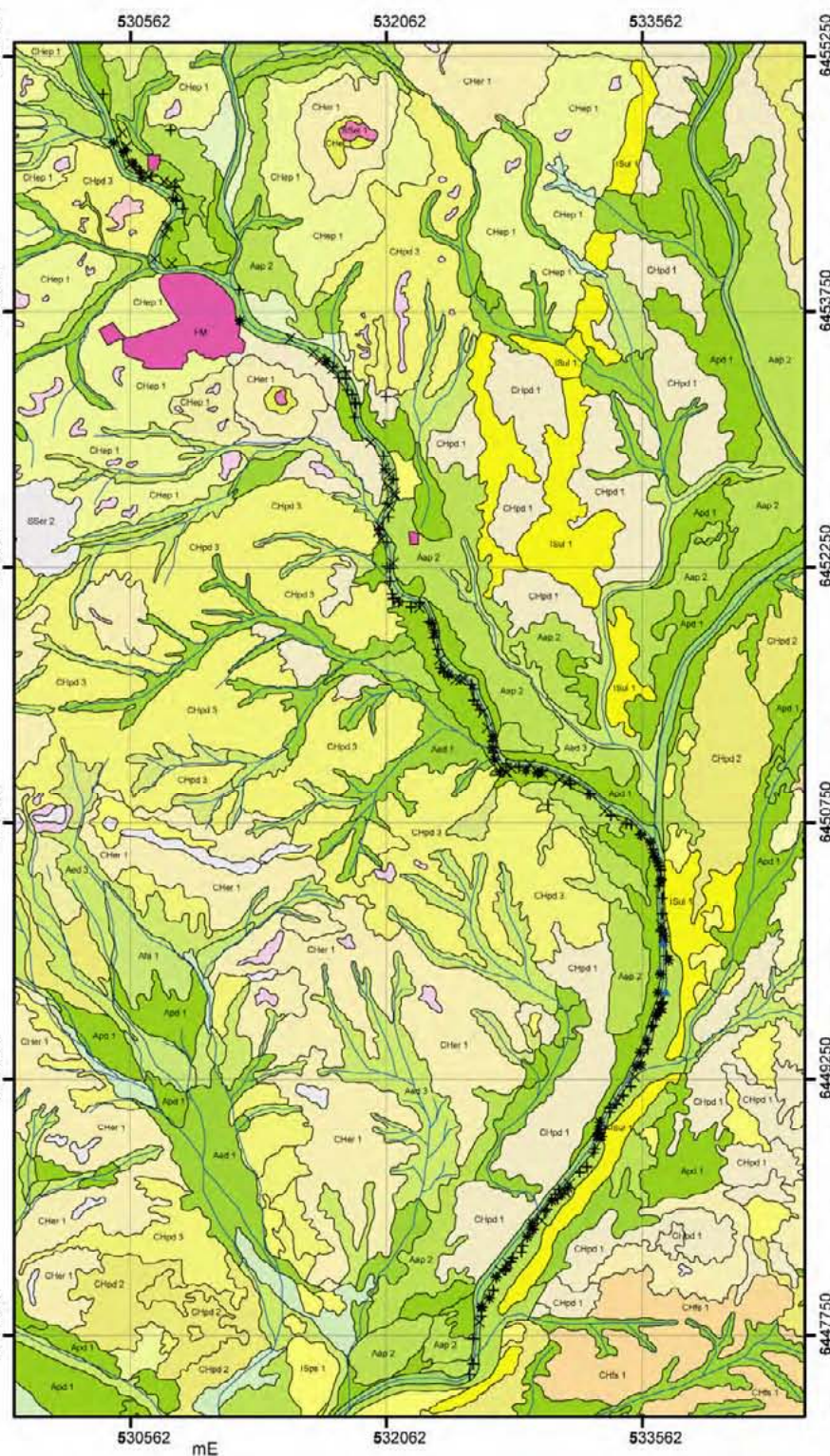
E. camaldulensis (leaves) Biogeochemistry Pine Creek Broken Hill W/NSW - (K)



K ppm

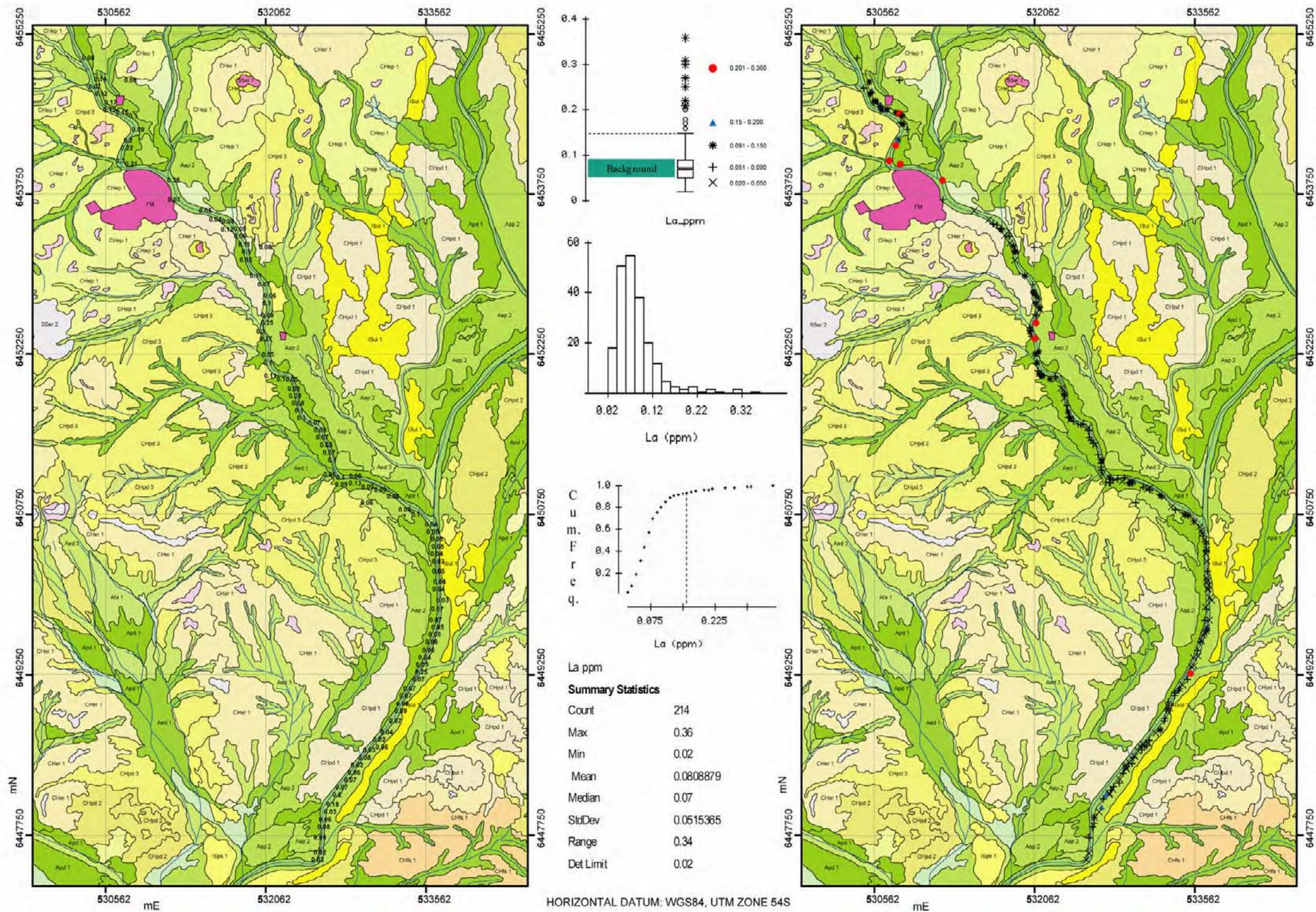
Summary of Statistics	
Count	214
Max	20100
Min	6800
Mean	11370
Median	11100
StdDev	2442.78
Range	13260
Det Limit	20

HORIZONTAL DATUM: WGS84, UTM ZONE 54S



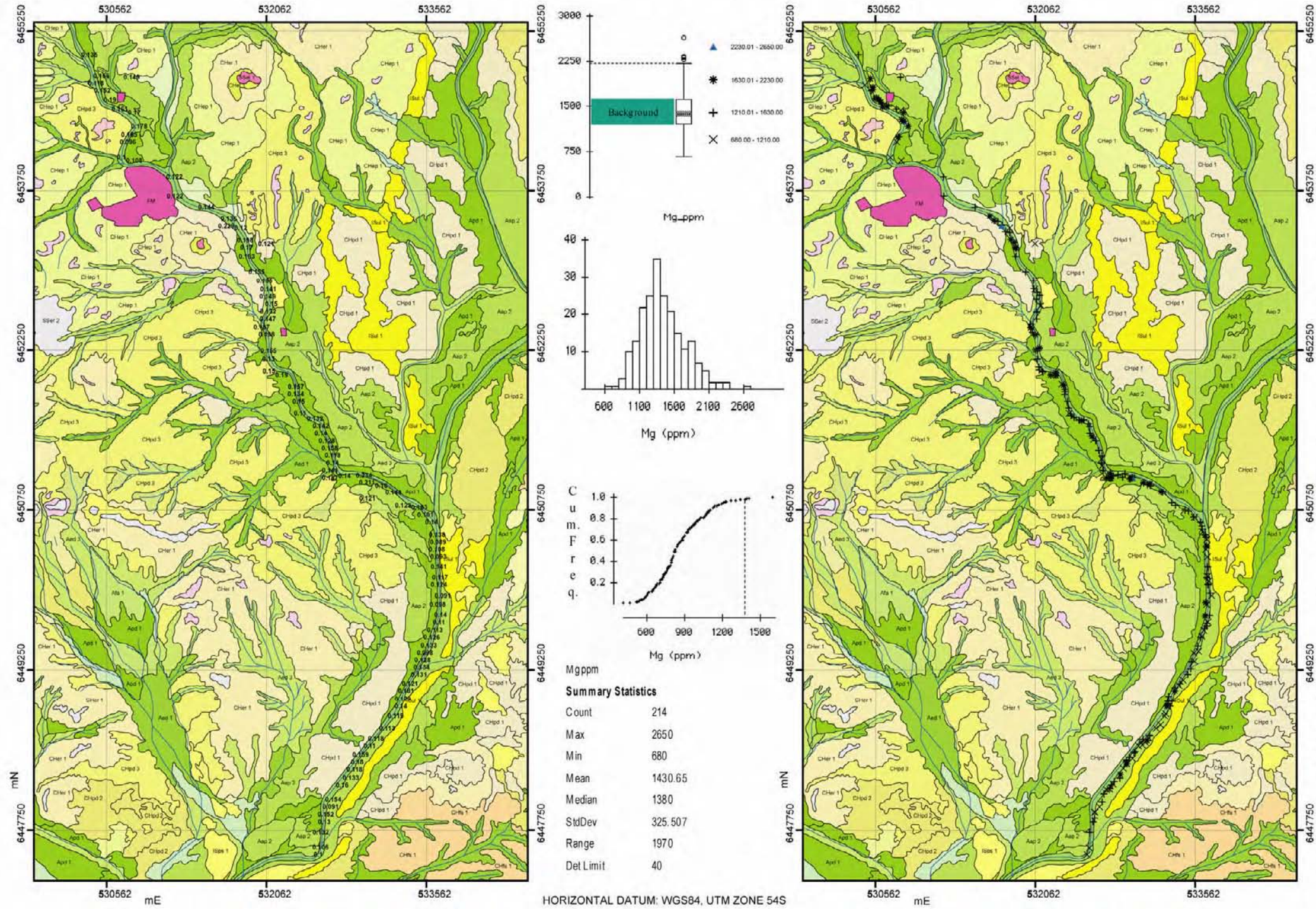
Raw data and spatial distribution of detectable K in *E. camaldulensis* (leaves) down Pine Creek with accompanying boxplots, histogram, cumulative frequency plot and summary statistics.

E. camaldulensis (leaves) Biogeochemistry Pine Creek Broken Hill W/NSW - (La)



Raw data and spatial distribution of detectable La in *E. camaldulensis* (leaves) down Pine Creek with accompanying boxplots, histogram, cumulative frequency plot and summary statistics.

E. camaldulensis (leaves) Biogeochemistry Pine Creek Broken Hill W/NSW - (Mg)



Raw data and spatial distribution of detectable Mg in *E. camaldulensis* (leaves) down Pine Creek with accompanying boxplots, histogram, cumulative frequency plot and summary statistics.