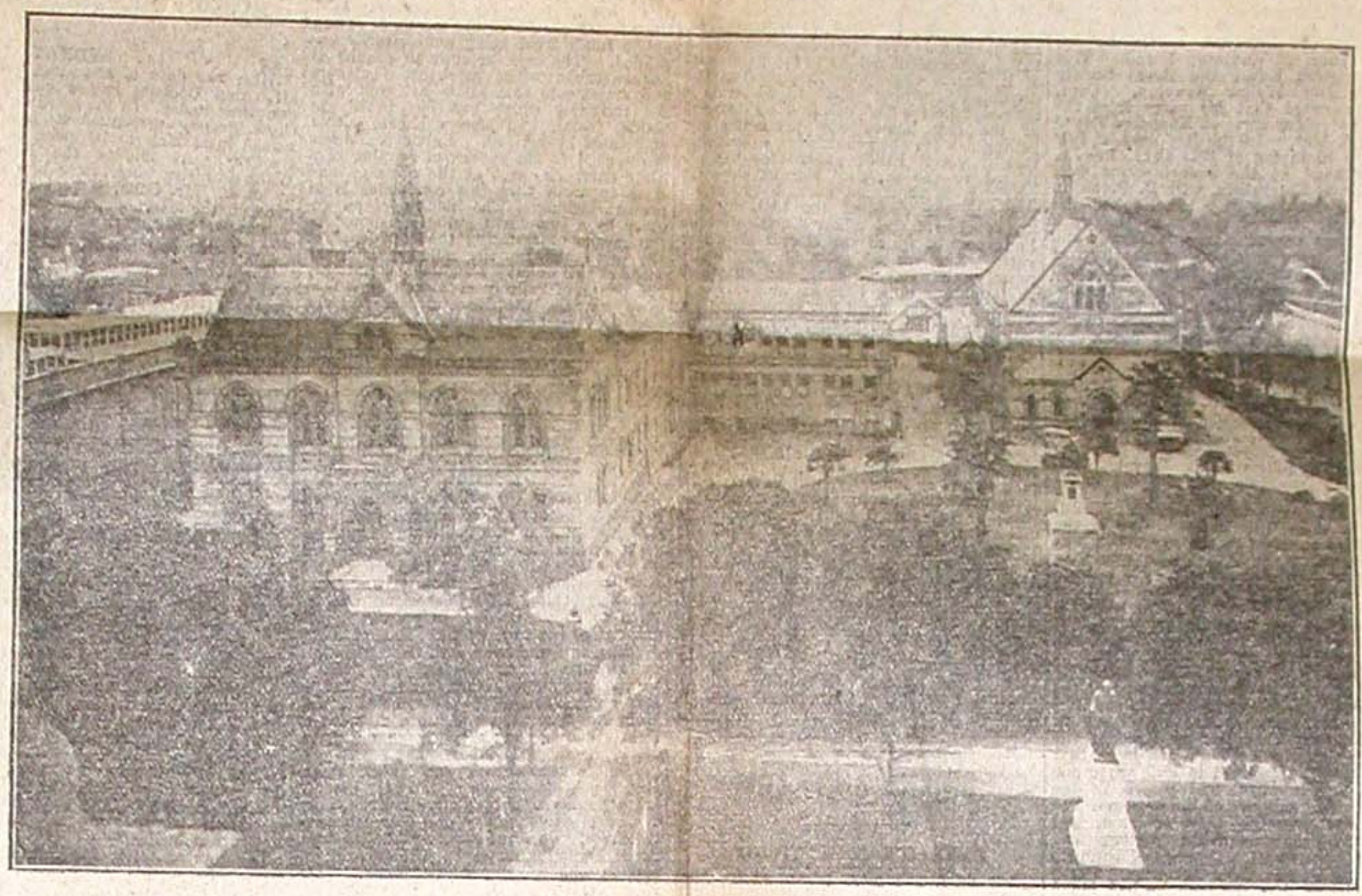




FREDERICK WOOD JONES, M.B. B.S., M.R.C.S., L.R.C.P., D.Sc., F.R.S.
Appointed Elder Professor of Anatomy in 1929



A comprehensive view of the charmingly situated University buildings, showing the main front building on the left; the wing containing the department of botany in the centre; and the Elder Conservatorium on the right. Standing back in its own pleasant grounds, and fronted by the gardens of North terrace, the University occupies an ideal and picturesque situation.



JOHN HURTON CLELAND, M.D.
Appointed Professor of Pathology in 1920.



JAMES ARTHUR PRESCOTT, M.Sc.
Waite Professor of Agricultural Chemistry, Appointed last year.



THORBURN BRAILSFORD ROBERTSON, Ph.D., D.Sc.
Appointed in 1919 Professor of Physiology and Bio-Chemistry.



SIR DOUGLAS MAWSON, O.B.E., B.E., B.Sc., D.Sc., F.R.S.
Lecturer in mineralogy and petrology, 1905, and appointed Professor of Geology and Mineralogy in 1921.



JOHN MCKELLAR STEWART, D.Phil.
Hughes Professor of Philosophy, Appointed in 1923.



ARTHUR LANG CAMPBELL, M.A., B.E.
Appointed Professor of Law early in year.



ROBERT WILLIAM CHAPMAN, M.A., B.C.E.
Appointed Professor of Engineering in 1907, formerly lecturer from 1889.



THEODORE GEORGE BENTLEY OSBORN, D.Sc.
Professor of Botany since 1912.



SIR ARCHIBALD THOMAS STRONG, M.A., Litt.D.
Jury Professor of English Language and Literature, Appointed 1922.



WILLIAM KEITH HANCOCK, B.A.
Appointed Professor of Modern History in 1908.



JOHN RAYMOND WILTON, M.A., D.Sc.
Appointed in 1920 Elder Professor Pure and Applied Mathematics.