

GREAT TEACHERS OF EARLY DAYS.



LATE PROFESSOR RALPH TATE,
F.G.S.

Elder Professor of Natural Science, 1875-1901. He was one of the first professors at the University, and is generally regarded as having laid the basis of South Australian geology and botany. He died in 1901.



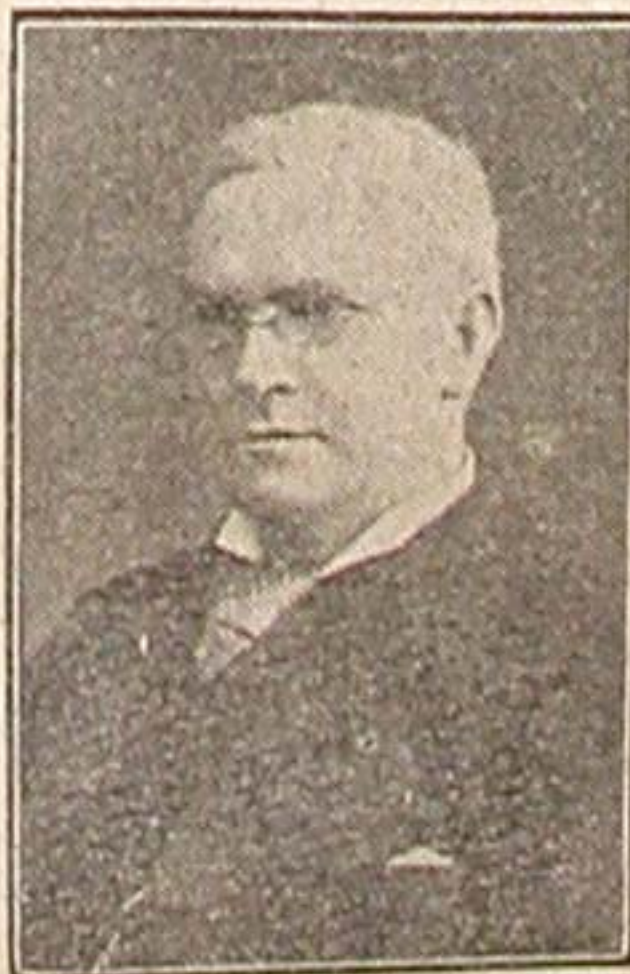
SIR WILLIAM HENRY BRAGG,
M.A., F.R.S.,

Elder Professor of Pure and Applied Mathematics and Elder Professor of Physics from 1885 to 1908, and one of the most outstanding men ever connected with the Adelaide University.



ARCHIBALD WATSON, M.D.,
F.R.C.S.

Elder Professor of Anatomy, 1885-1919. Appointed Professor Emeritus in 1919.



HORACE LAMB, M.A., LL.D., F.R.S.,

First Elder Professor of Pure and Applied Mathematics, and Elder Professor of Physics. Regarded as one of the foremost mathematicians and physicists of the world.