

**The ecology of the koala
(*Phascolarctos cinereus*) in over-browsed
habitats on Kangaroo Island, South Australia**

SOOLIM CARNEY

A thesis submitted for the degree of Doctor of Philosophy in the
Faculty of Sciences

School of Earth and Environmental Sciences

University of Adelaide

November 2010

APPENDIX A:

Tree Guard Photo Points



Figure 1: Manna gum control No. 1 - November 98 (left) and December 99 (right)- canopy condition improved



Figure 2: Manna gum control No. 2 - November 98 (left) and December 99 (right) – canopy condition declined



Figure 3: Manna gum control No. 3 - October 98 (left) and December 99 (right) – canopy condition declined



Figure 4: Manna gum control No. 4 - October 98 (left) and December 99 (right) – no change in canopy condition



Figure 5: Manna gum control No. 5 - October 98 (left) and December 99 (right) – no change in canopy condition



Figure 6: Manna gum control No. 6 - October 98 (left) and December 99 (right) – no change in canopy condition



Figure 7: Manna gum control No. 7 - October 98 (left) and December 99 (right) – no change in canopy condition



Figure 8: Manna gum control No. 8 - October 98 (left) and December 99 (right) – no change in canopy condition



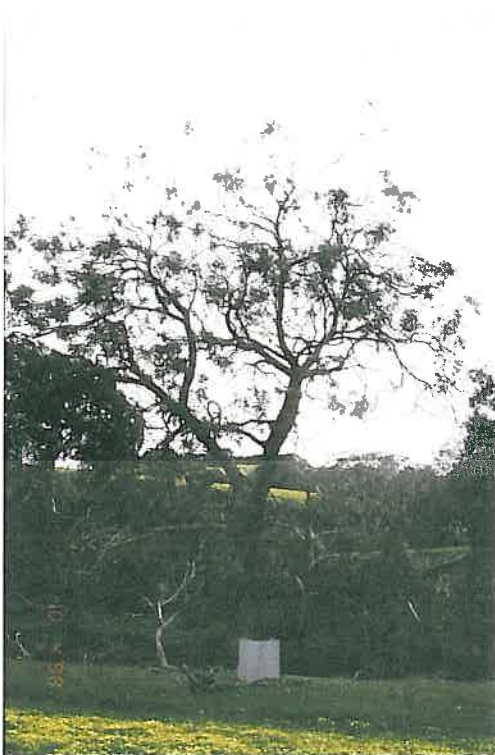
Figure 9: Manna gum control No.9 - October 98 (left) and December 99 (right) – canopy condition declined



Figure 10: Manna gum guarded No. 1 - October 98 (left) and December 99 (right) – canopy condition improved



**Figure 11: Manna gum guarded No. 2 - October 98 (left) and December 99 (right)
– no change in canopy condition**



**Figure 12: Manna gum guarded No. 3 - October 98 (left) and December 99 (right)
– canopy condition improved**



Figure 13: Manna gum guarded No. 4 - October 98 (left) and December 99 (right) – canopy condition improved



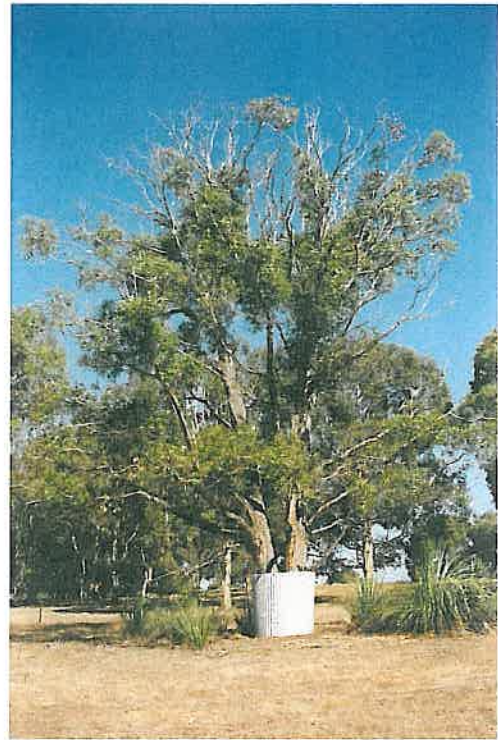
Figure 14: Manna gum guarded No. 5 - October 98 (left) and December 99 (right) – canopy condition improved



Figure 15: Manna gum guarded No. 6 - October 98 (left) and December 99 (right) – canopy condition improved



Figure 16: Manna gum guarded No. 7 – October 98 (left) and December 99 (right) – canopy condition improved



**Figure 17: Manna gum guarded No. 8 - October 98 (left) and December 99 (right)
– canopy condition improved**



Figure 18: Blue gum control No. 1 - October 98 (left) and December 99 (right) – canopy condition improved

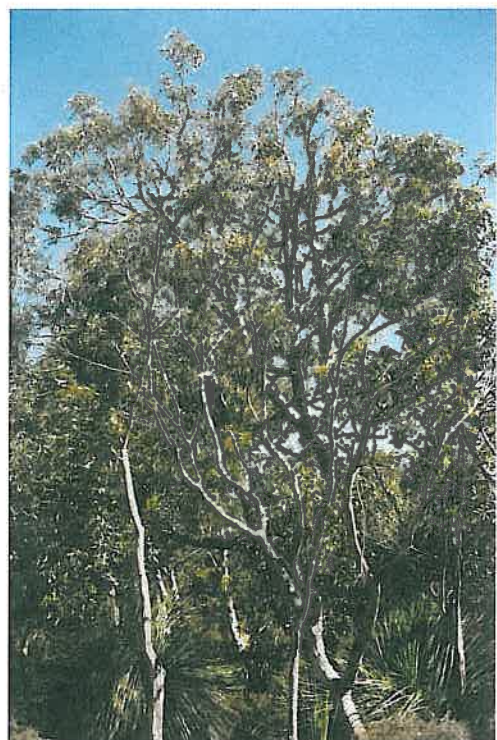


Figure 19: Blue gum control No. 2 - October 98 (left) and December 99 (right) – canopy condition improved



Figure 20: Blue gum control No. 3 - October 98 (left) and December 99 (right) – no change in canopy condition



Figure 21: Blue gum control No. 4 - October 98 (left) and December 99 (right) – no change in canopy condition

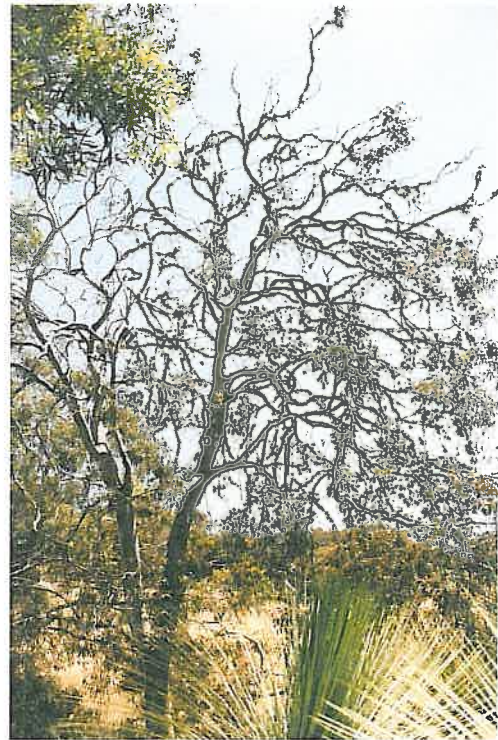
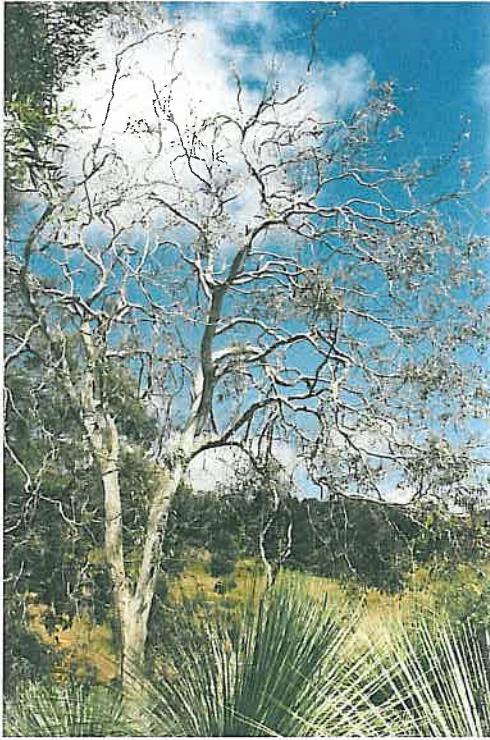


Figure 22: Blue gum control No. 5 - October 98 (left) and December 99 (right) – no change in canopy condition



Figure 23: Blue gum control No. 6 - October 98 (left) and December 99 (right) – canopy condition improved

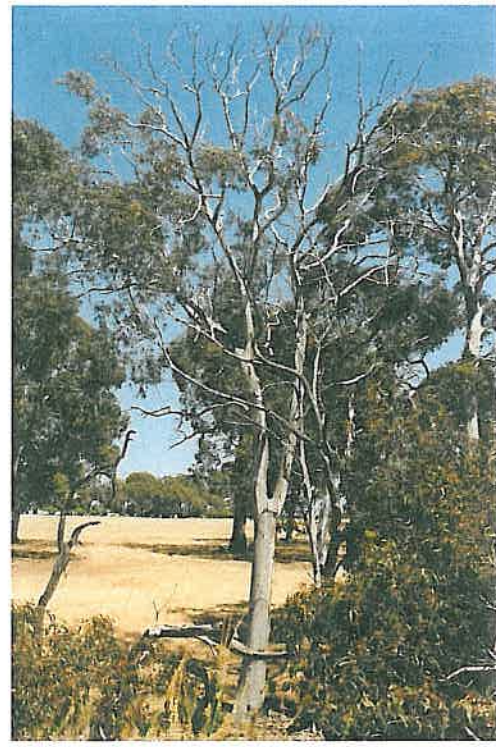


Figure 24: Blue gum control No. 7 - October 98 (left) and December 99 (right) – no change in canopy condition

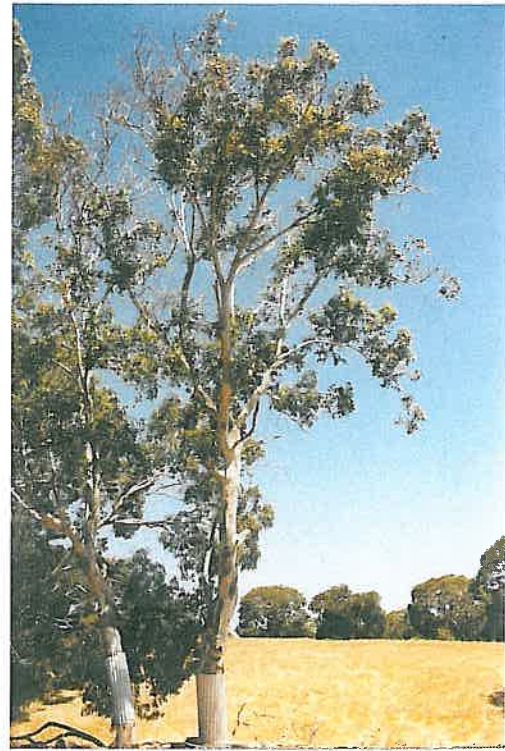


Figure 25: Blue gum guarded No. 1 - October 98 (left) and December 99 (right) – canopy condition improved



Figure 26: Blue gum guarded No. 2 - October 98 (left) and December 99 (right) – canopy condition improved



Figure 27: Blue gum guarded No. 3 - October 98 (left) and December 99 (right) – canopy condition improved



Figure 28: Blue gum guarded No. 4 - October 98 (left) and December 99 (right) – no change in canopy condition



Figure 29: Blue gum guarded No. 5 - October 98 (left) and December 99 (right) – no change in canopy condition



Figure 30: Blue gum guarded No. 6 - October 98 (left) and December 99 (right) – canopy condition improved



Figure 31: Blue gum guarded No. 7 - October 98 (left) and December 99 (right) – canopy condition improved
