

PUBLISHED VERSION

Gomez-Lopez, Nardhy Yadira; Vadillo-Ortega, Felipe; Estrada-Gutierrez, Guadalupe
[Combined Boyden-flow cytometry assay improves quantification and provides phenotypification of leukocyte chemotaxis](#), PLoS One, 2011; 6(12):e28771

Copyright: © 2011 Gomez-Lopez et al. This is an open-access article distributed under the terms of the Creative Commons Attribution License, which permits unrestricted use, distribution, and reproduction in any medium, provided the original author and source are credited.

PERMISSIONS

<http://www.plosone.org/static/policies.action#copyright>

3. Copyright and License Policies

Open access agreement. Upon submission of an article, its authors are asked to indicate their agreement to abide by an open access Creative Commons license (CC-BY). Under the terms of this license, authors retain ownership of the copyright of their articles. However, the license permits any user to download, print out, extract, reuse, archive, and distribute the article, so long as appropriate credit is given to the authors and source of the work. The license ensures that the authors' article will be available as widely as possible and that the article can be included in any scientific archive.

Open access agreement: US government authors. Papers authored by one or more US government employees are not copyrighted, but are licensed under a Creative Commons public domain license (CC0), which allows unlimited distribution and reuse of the article for any lawful purpose. Authors should read about [CC-BY](#) or [CC0](#) before submitting papers.

Archiving in PubMed Central. Upon publication, PLoS also deposits all articles in [PubMed Central](#). This complies with the policies of funding agencies, such as the [NIH](#) in the USA, the [Wellcome Trust](#), and the [Research Councils](#) in the UK, and the [Deutsche Forschungsgemeinschaft](#) in Germany, which request or require deposition of the published articles that they fund into publicly available databases.

<http://www.plos.org/about/open-access/license/>

LICENCE

The Public Library of Science (PLoS) applies the [Creative Commons Attribution License](#) (CC-BY) to works we publish (read the [human-readable summary](#) or the [full license legal code](#)). Under this license, authors retain ownership of the copyright for their content, but allow anyone to download, reuse, reprint, modify, distribute, and/or copy the content as long as the original authors and source are cited. **No permission is required from the authors or the publishers.**

Appropriate attribution can be provided by simply citing the original article (e.g., Kaltenbach LS et al. (2007) Huntingtin Interacting Proteins Are Genetic Modifiers of Neurodegeneration. PLoS Genet 3(5): e82. doi:10.1371/journal.pgen.0030082).

For any reuse or redistribution of a work, users must also make clear the license terms under which the work was published.

This broad license was developed to facilitate free access to, and unrestricted reuse of, original works of all types. Applying this standard license to your own work will ensure that it is freely and openly available in perpetuity.

If you have a question about the Creative Commons License please use this [contact form](#) and choose "General Questions."

18th December 2012

<http://hdl.handle.net/2440/70868>

Combined Boyden-Flow Cytometry Assay Improves Quantification and Provides Phenotypification of Leukocyte Chemotaxis

Nardhy Gomez-Lopez^{1,2,3*}, Felipe Vadillo-Ortega^{4,9}, Guadalupe Estrada-Gutierrez^{5,9}

1 Research Direction, Instituto Nacional de Perinatología Isidro Espinosa de los Reyes, Mexico City, Mexico, **2** Department of Obstetrics and Gynecology, University of Alberta, Edmonton, Alberta, Canada, **3** Discipline of Obstetrics and Gynaecology, The University of Adelaide, Adelaide, South Australia, Australia, **4** Biochemistry Department, Faculty of Medicine, Universidad Nacional Autónoma de México, Mexico City, Mexico, **5** Department of Infectology, Instituto Nacional de Perinatología Isidro Espinosa de los Reyes, Mexico City, Mexico

Abstract

Chemotaxis has been studied by classical methods that measure chemotactic and random motility responses *in vitro*, but these methods do not evaluate the total number and phenotype of migrating leukocytes simultaneously. Our objective was to develop and validate a novel assay, combined Boyden-flow cytometry chemotaxis assay (CBFCA), for simultaneous quantification and phenotypification of migrating leukocytes. CBFCA exhibited several important advantages in comparison to the classic Boyden chemotaxis assay (CBCA): 1) improved precision (intra-assay coefficients of variation (CVs): CBFCA-4.7 and 4.8% vs. CBCA-30.1 and 17.3%; inter-observer CVs: CBFCA-3.6% vs. CBCA 30.1%); 2) increased recovery of cells, which increased assay to provide increased sensitivity; 3) high specificity for determining the phenotype of migrating/attraction leukocytes; and 4) reduced performance time (CBFCA 120 min vs. CBCA 265 min). Other advantages of CBFCA are: 5) robustness, 6) linearity, 7) eliminated requirement for albumin and, importantly, 8) enabled recovery of migrating leukocytes for subsequent studies. This latter feature is of great benefit in the study of migrating leukocyte subsets. We conclude that the CBFCA is a novel and improved technique for experiments focused on understanding leukocyte trafficking during the inflammatory response.

Citation: Gomez-Lopez N, Vadillo-Ortega F, Estrada-Gutierrez G (2011) Combined Boyden-Flow Cytometry Assay Improves Quantification and Provides Phenotypification of Leukocyte Chemotaxis. PLoS ONE 6(12): e28771. doi:10.1371/journal.pone.0028771

Editor: Thomas Langmann, University of Regensburg, Germany

Received: August 22, 2011; **Accepted:** November 15, 2011; **Published:** December 9, 2011

Copyright: © 2011 Gomez-Lopez, et al. This is an open-access article distributed under the terms of the Creative Commons Attribution License, which permits unrestricted use, distribution, and reproduction in any medium, provided the original author and source are credited.

Funding: NG-L is sponsored by the Molly Towell Perinatal Research Foundation. FV-O was supported by CONACyT - SALUD 7036 and 69353. The funders had no role in study design, data collection and analysis, decision to publish, or preparation of the manuscript.

Competing Interests: NG-L is principal inventor on a pending United States provisional patent (US 435,018). This does not alter the authors' adherence to all the PLoS ONE policies on sharing data and materials. FV-O and GE-G have declared that no competing interests exist.

* E-mail: gpestrad@gmail.com (GE-G); nardhy.gomez-lopez@adelaide.edu.au; gomezlop@ualberta.ca(NG-L)

⁹ These authors contributed equally to this work.

Introduction

Leukocyte infiltration is a crucial event of inflammation. This process is regulated by several molecules, including chemoattractants and cellular adhesion molecules [1]. Chemoattraction is termed chemotaxis when the ligand gradient is soluble. Chemotaxis is described as an ensemble of cell activities that are precisely orchestrated in space and time, consisting of highly dynamic cell shape rearrangements accompanied by rapid adhesion-de-adhesion cycling and directional movement [2].

Different models for investigating leukocyte chemotaxis have been developed to measure chemotactic and random motility responses *in vitro*. These assays provide information on the locomotion of leukocytes, which is not only of physiological interest, but also important in furthering our understanding of the inflammatory response. Although these assays do not necessarily mimic *in vivo* conditions, they are useful tools for studying the cellular functions that occur in living tissues [3,4,5,6].

The most common methods used to evaluate chemotaxis are those in which leukocytes migrate through a micropore membrane [7], of which the Boyden model is an early example [3]. Although

this technique provides an estimation of the relative leukocyte chemotactic activity of soluble substances, it is suggested that it gives partial and sometimes misleading information, and should be supplemented with other methods including visual assays [8]. Consequently, the Boyden chamber technique has been modified over the years [9,10,11]; however, none of these modifications allow the quantification of total migrating leukocytes concurrently with the determination of their phenotype.

Phenotypification of migrating leukocytes is not required for chemotaxis studies that utilize purified leukocyte subsets, such as neutrophils [12] and monocytes [13]. However, in many experimental paradigms, the simultaneous evaluation of distinct leukocyte subsets is crucial [12,14,15], and this typically requires separate assays. To associate specific inflammatory responses with distinct leukocyte subsets, investigators require an improved method for studying the density and phenotype of diverse leukocyte subsets simultaneously. In the present study we describe and validate an improved CBFCA, which allows the accurate quantification and phenotypification of different migrating leukocyte subsets in a single assay. This CBFCA allows the accurate quantification and recovery of the migrating leukocytes for

subsequent phenotypification and characterization in a single assay, which facilitates understanding of leukocyte trafficking during the inflammatory response.

Materials and Methods

Ethics statement

This study was approved by the institutional review board of the Instituto Nacional de Perinatología Isidro Espinosa de los Reyes in Mexico City (Register 212250-02121). Written and informed consent was obtained from each subject prior to inclusion in the study.

Isolation of leukocytes

Peripheral blood samples from healthy female donors (age 30–40 years) were collected into heparinized tubes. Total leukocytes were isolated using Polymorphprep™ (Axis-Shield, MA, USA) density gradient according to the manufacturers instructions. Following centrifugation, both bands of leukocytes (mono- and polymorphonuclear) were recovered and mixed. Total leukocytes were washed twice in calcium and magnesium-free 1X phosphate

buffered saline (PBS) at 4°C and resuspended in Dulbeccos modified Eagle’s medium (DMEM) (GIBCO Invitrogen, CA, USA). Leukocyte viability was assessed by trypan blue exclusion and the leukocyte count was determined using a Beckman Coulter AcT 5 Diff Hematology Analyzer (Beckman Coulter, CA, USA). Viability was greater than 97%, with negligible contamination by red blood cells. Leukocyte suspensions were stored at 37°C and used within an hour of isolation.

CBCA

The classic chemotaxis assay was performed according to the method described by Snyderman, *et al.* [16] using modified Boyden chambers (BY312; Neuro Probe, MD, USA) and a double membrane modification [17] (Fig. 1A). The lower well of the chamber was filled creating a slight positive meniscus with 1.2 ml of chemotactic (either medium as control or 10⁻⁶ M N-Formyl-Met-Leu-Phe (fMLP) (Sigma-Aldrich, MO, USA) diluted in DMEM). This concentration of fMLP has been shown to be optimal for inducing migration of leukocytes [18]. Two membranes were used together to separate the chamber wells: a 5 μm pore size polycarbonate membrane, 22 μm in thickness

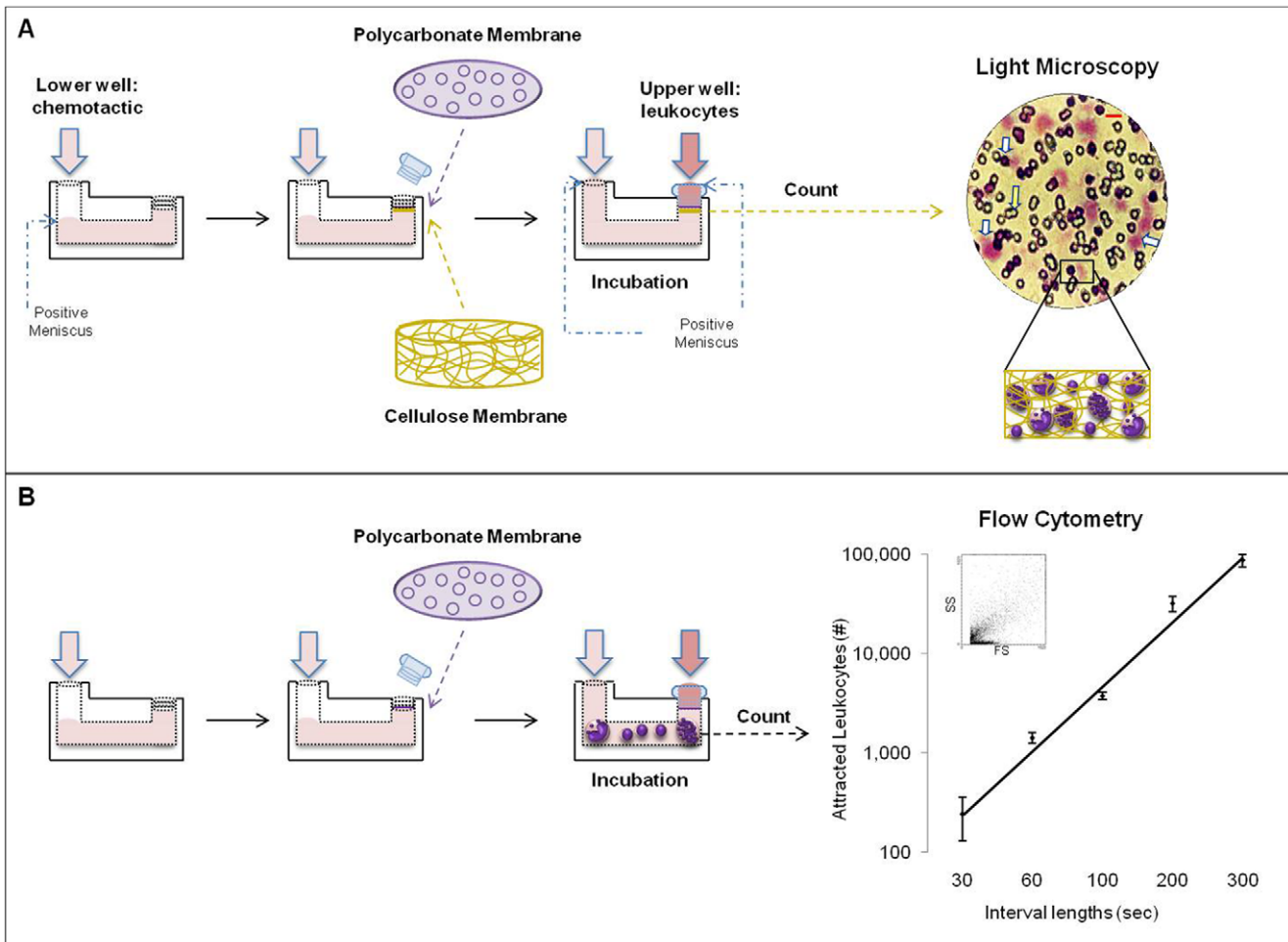


Figure 1. CBCA & CBFA. A) CBCA includes a permeable polycarbonate membrane and a second cell impermeable cellulose membrane directly beneath to trap attracted cells. These membranes separate the upper well containing leukocytes and the lower well containing the chemotactic. Attracted leukocytes are counted in the cellulose membrane under light microscopy in different focal planes (magnification). White arrows represent the leukocytes trapped and agglutinated into the cellulose membrane, and the yellow arrow represents its pores. Light microscopy: magnification x400; Red bar 10 μm. **B)** CBFA includes a single polycarbonate membrane between the wells. Attracted leukocytes in the lower well are counted by flow cytometry and their number increases lineally with the length of interval. The leukocyte phenotype can also be determined in this step. doi:10.1371/journal.pone.0028771.g001

(TMTP01300, Millipore Corporation, MA, USA) to select the cells, and a 8 μm pore size cellulose membrane, 160 μm in thickness (SCWP01300, Millipore Corporation) directly above the lower well to trap the cells. Then, the thumb nut was placed and tightened until finger-tight. The upper and lower wells were then filled simultaneously creating a slight positive meniscus, the lower with 500 μL of chemotactic and the upper with 500 μL of leukocyte suspension containing 5×10^5 leukocytes. Boyden chambers were incubated in a humidified atmosphere at 37°C for 90 min [13], and the horizontal position was assured using a bubble level device. Following incubation, the cellulose membrane was removed, washed in 1X PBS, fixed with methanol, stained with Harris hematoxylin-eosin, and mounted on glass slides using Entellan[®] (Electron Microscopy Sciences, PA, USA) with the upper surface facing up. Migrating total leukocytes were counted by light microscopy at 400 X using an oil-immersion objective. Two perpendicular diameters were counted on each membrane (>100 fields per membrane) [13,19] and the result was scored as the number of attracted leukocytes per membrane. Leukocytes attracted by the control were subtracted in all cases.

CBFCA

The combined chemotaxis assay was performed under the same conditions described for the classic method. However, only the polycarbonate membrane was used (Fig. 1B). Following incubation, the leukocyte suspension in the lower well was removed and centrifuged at $500 \times g$ for 5 min at room temperature. The pellet containing attracted leukocytes was fixed with 500 μL of Optilyse B (Beckman Coulter), washed and resuspended in 500 μL of 1X PBS, and leukocytes were counted using a flow cytometer (FC500; Beckman Coulter). Leukocyte counting by flow cytometry (using a medium flow rate) was evaluated at six different counting length intervals (30, 60, 100, 200, 300 sec) using 10^{-6} M fMLP and a standard leukocyte sample. As for CBCA, leukocytes attracted by the control were subtracted in all cases.

Validation of CBFCA

For validation of the performance of this proposed assay, we have considered the classical parameters of precision, accuracy, sensitivity, and specificity.

Precision. The intra-assay variation was determined by performing two sets of assays, using 10^{-6} M fMLP as chemotactic and leukocytes from the same person. Set 1 included 12 assays and set 2 included 15 assays. Both sets were performed using both methods CBCA or CBFCA, and using two different leukocyte samples. The inter-observer variation was determined by using 6 different expert observers/operators, where 3 counted by microscopy (CBCA) and 3 counted by flow cytometry for 100 sec (CBFCA). The coefficients of variation were calculated by dividing the standard deviation of the estimates by their mean.

Accuracy and sensitivity. The classical definitions of these validation terms are difficult to apply to this assay because of the lack of an accepted “gold standard”. To address these concepts, we performed 10 independent assays in triplicate (each independent assay included 1 sample of leukocytes): 5 assays using 10^{-6} M fMLP as standard chemotactic, and 5 assays using plasma obtained from healthy donors as biological chemotactic [20]. Assays were performed using CBCA or CBFCA. We calculated the recovery of the cells after the assay and then considered the accuracy and sensitivity of the counting technique to provide valid measurements.

Specificity. Again, the concept of specificity is difficult to apply to this assay. To demonstrate the ability of the CBFCA to distinguish among phenotypes in a mixed population of

leukocytes, we used flow cytometry to assess the leukocyte phenotype before and after performing CBFCA, using 10 μL of each of the following fluorescent monoclonal antibodies (Beckman Coulter): CD45-FITC (PN IM2643) for total leukocytes, CD3-PC7 (6607100) for T lymphocytes, CD19-PC5 (PN IM2643) for B lymphocytes, CD14-ECD (PN IM2707U) for monocytes, and CD56-PE (PN IM2073) for NK cells. Leukocyte subsets were analyzed within the CD45+ region considering 10,000 events. Granulocytes were identified as CD45⁺CD3⁻CD19⁻CD14⁻CD56⁻ cells. Specificity of CBFCA was observed by comparing the leukocyte subset proportions before and after assay. Although we only analyzed general leukocyte subsets, each laboratory will chose specific antibodies according to its needs.

Robustness

We evaluated the leukocyte chemotaxis of a biological chemotactic at different concentrations in time course experiments. CBFCA were performed using both undiluted and diluted plasma (1:50 and 1:100). Since CBFCA also determines the phenotype of attracted leukocytes and each leukocyte subset has different responsiveness [21], we established the robustness of the incubation time for each leukocyte subset in CBFCA. Assays at different incubation times (60, 90 and 120 min) were performed using plasma as biological chemotactic.

Linearity

CBFCAs were performed using two purified leukocyte subsets; neutrophils (5×10^5 , 5×10^4 , 5×10^3 and 5×10^2) and monocytes (5×10^3 and 5×10^2), with 10^{-3} or 10^{-6} M fMLP as chemotactics. Neutrophils were purified with PolymorphprepTM solution (Axis shield), and monocytes were positively separated by magnetic cell sorting, using the Monocyte Isolation Kit (Miltenyi Biotec, CA, USA), according to the manufacturer’s instructions.

Use of Albumin

It has been reported that an exogenous protein source is required to obtain reproducible results when chemotaxis is evaluated using cellulose membranes [7]. However, it is unknown if addition of albumin effects the quantification of the CBFCA. This was evaluated by performing CBFCA using medium and 10^{-6} M fMLP, in the absence or presence of two previously reported concentrations of human albumin (HA) (wt/vol): 0.1% [22,23,24] and 2% [25,26].

Statistical analyses

The data were examined initially by the Shapiro-Wilk test for normal distribution. Since they were normally distributed, T tests, ANOVA and post-hoc tests were used according to the homogeneity of variances. Statistical analyses were performed using SPSS version 18.0. A P value of <0.05 was considered statistically significant.

Results and Discussion

Comparison between CBCA and CBFCA

Several variations of the original Boyden technique have been reported since it was described [8,27]. Snyderman introduced the double membrane assay (CBCA), which is widely used [9,16,17,19]. Migrating leukocytes pass through the polycarbonate membrane by a process similar to diapedesis [1] and become trapped in the cellulose membrane. These trapped leukocytes were counted by light microscopy. Although this technique is commonly used to investigate chemotaxis *in vitro* [3,27,28], the assessment of the number of attracted leukocytes is subjective and

time-consuming. Leukocyte counting by CBCA involved approximately 2 hrs per membrane/assay. Variation arises due to trapping and clustering of the leukocytes in different focal planes of the cellulose membrane (Fig. 1A). In CBFCA, the cellulose membrane was eliminated, enabling recovery of leukocytes in a fluid medium after passing through the polycarbonate membrane. Interval lengths of 30, 60, 100, 200, 300 sec were used for leukocyte counting by flow cytometry (Fig. 1B). Here, we demonstrated that the leukocyte count increased logarithmically with the interval length. We recommend that each laboratory chooses this parameter according to its experimental design. We selected 300 sec because it maximizes the number of counted cells and remains in the linear portion of the relationship between time and leukocyte count.

Validation of CBFCA

Precision. To determine the precision of both assays, we calculated the intra-assay variation and a homologous of an inter-assay, the inter-observer variation. In both sets of assays, the intra-assay CV was higher in CBCA (30.1 and 17.3%) than in

CBFCA (4.7 and 4.8%) (Fig. 2A and B). In addition, the inter-observer CV was higher in CBCA (30.1%) than in CBFCA (3.6%) (Fig. 2C and D). The high inter-observer CV in CBCA was attributed to the assay rather than the observers, since the three observers had high expertise and experience in microscopy. These data demonstrate that CBFCA exhibits improved precision over CBCA.

Accuracy and sensitivity. Using fMLP as the standard chemical chemoattractant and human plasma [20] as a biological chemoattractant, we determined the accuracy of both methods. While CBFCA determined 90% of the leukocyte chemotaxis of plasma, CBCA only determined 29%. In addition, the counting range in the CBCA method was 200 – 2500 cells per membrane (up to 0.5 % of 5×10^5 placed cells) and in the CBFCA method was markedly expanded to 100–100,000 cells per tube (up to 20% of 5×10^5 placed cells). Furthermore, when we used purified leukocyte subsets, CBFCA increased its counting range even further to 100 – 250,000 cells (up to 50% of 5×10^5 placed cells). These data strongly suggest that the sensitivity and range of measurability of CBFCA is superior to CBCA. It is apparent that

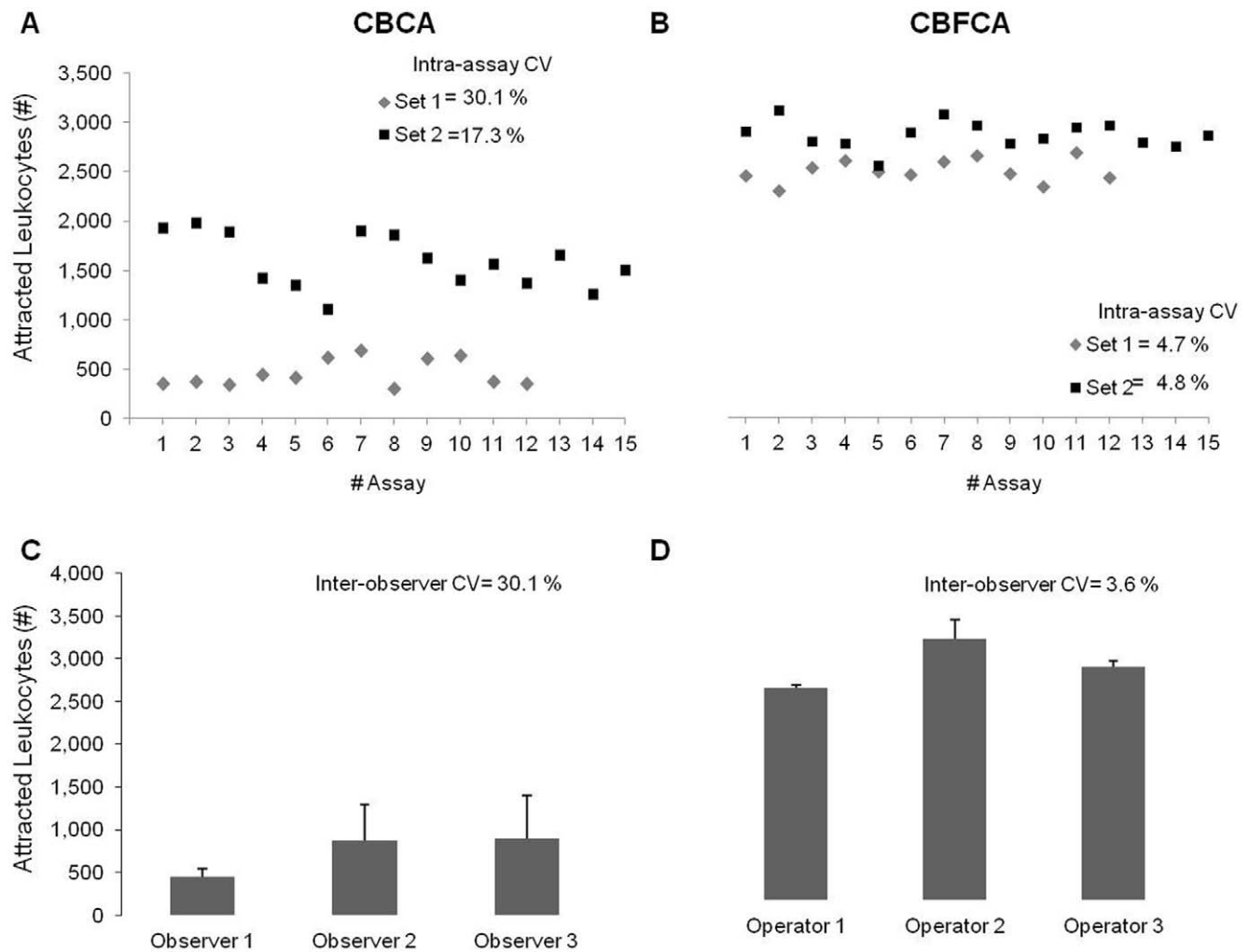


Figure 2. Precision: Intra-assay and inter-observer variation. A&B) Two sets of assays were performed by CBCA or CBFCA, set 1 includes 12 assays (gray diamonds) and set 2 includes 15 assays (black squares). Intra-assay coefficient of variation (CV) in CBCA was higher than in CBFCA in both sets (30.1 and 17.3% vs 4.7 and 4.8%). **D&C)** Three of these assays were counted by three different observers/operators using microscopy or flow cytometry. The inter-observer CV in CBCA was higher than in CBFCA (30.1 vs 3.6%). Data are shown as means±SD of three independent assays counted in triplicate.

doi:10.1371/journal.pone.0028771.g002

the number of cells applied to the assay and the interval length used for counting by flow cytometry will have a significant impact on the ability of the method to produce valid measurements. We recommend that each laboratory consider these parameters before using this assay and individualize the parameters according to their experimental conditions and desired end-points.

Specificity. It was not possible to determine the specificity of CBCA, since in this step the attracted leukocytes were trapped into the cellulose membrane and the phenotype determination was subjective. The specificity of CBFCFA was evaluated by determination of the phenotype of attracted leukocytes using specific conjugated antibodies and flow cytometry (Fig. 3A). Our data showed that 10^{-6} M fMLP and plasma exhibited specific leukocyte chemotactic activity, since the proportion of leukocyte subsets differed before and after assay: T lymphocytes ($p = 0.009$ and 0.019), monocytes ($p = ns$ and 0.022), NK cells ($p = 0.004$ and 0.005), and granulocytes ($p = 0.008$ and 0.004). Since fMLP and plasma are granulocyte/neutrophil chemotactics [20,29], we did not see significant differences between them (Fig. 3 B). These data demonstrates that CBFCFA permits the determination of the specific leukocyte chemotactic activity of commercial and biological chemotactics. Boyden chamber assays and flow cytometry have been conjugated before for studying leukocyte chemotaxis [30];

however, none of these studies used the flow cytometric analysis for the quantification and phenotypification of the attracted leukocytes simultaneously. The specificity of CBFCFA for determining the phenotype of migrating leukocytes depends of antibodies and cytometer used in each laboratory. All the antibodies used were 97–100% specific.

Other advantages of CBFCFA

Robustness. We evaluated the robustness of CBFCFA by quantifying the leukocyte chemotaxis of diluted and undiluted plasma at different incubation times. Our results indicate that undiluted plasma induced more leukocyte chemotactic activity than diluted plasma at 60, 90 or 120 min of incubation ($p < 0.005$) (Fig. 4 A). These results indicate that CBFCFA is robust enough to quantify the attracted leukocytes in a wide range of biological concentrations of chemotactics. This represents an advantage when small (and diluted) volumes of biological samples are available for chemotaxis studies.

The choice of incubation time in the chemotaxis assays is crucial for the evaluation of the number of attracted leukocytes [31]. We performed time course experiments using undiluted and diluted plasma. With this set of experiments, it was demonstrated that the migration rate was higher at 60 than at 90 min of incubation, regardless of using undiluted or diluted plasma

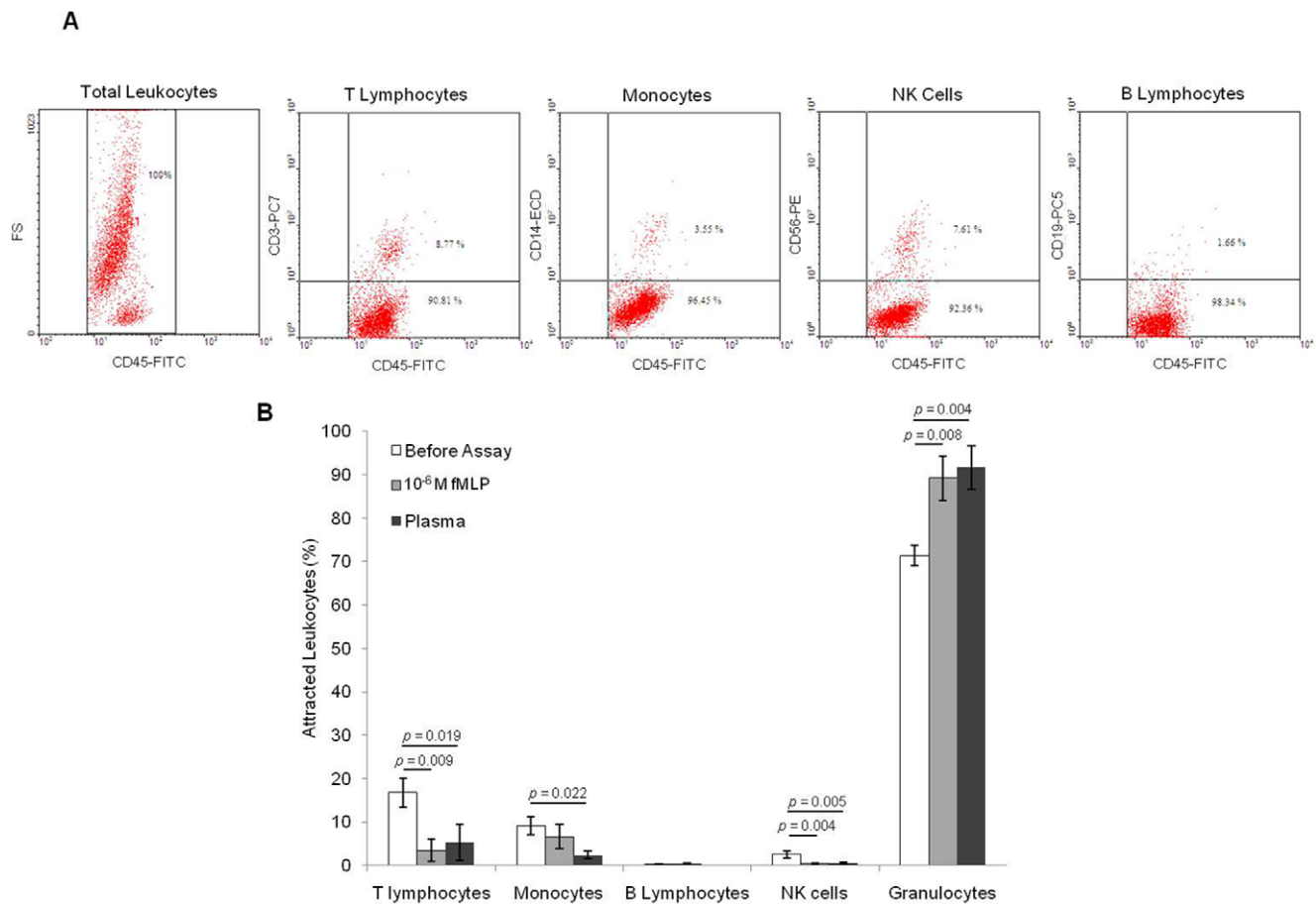


Figure 3. Specificity of CBFCFA. CBFCFA involves the determination of the leukocyte phenotype using conjugated specific antibodies and flow cytometry. **A)** Representative dot-plots showing the dual parameters used for the flow cytometric analysis: CD45+ for total leukocytes, CD45+CD3+ for T-lymphocytes, CD45+CD14+ for monocytes, CD45+CD56+ for NK cells and CD45+CD19+ for B lymphocytes. **B)** Specific leukocyte chemotactic activity of 10^{-6} M fMLP and plasma. Leukocyte subset proportions were significantly different before and after the assay. Data shown are means \pm SD of five independent assays in triplicate. Significance was determined by ANOVA and Games-Howell test. doi:10.1371/journal.pone.0028771.g003

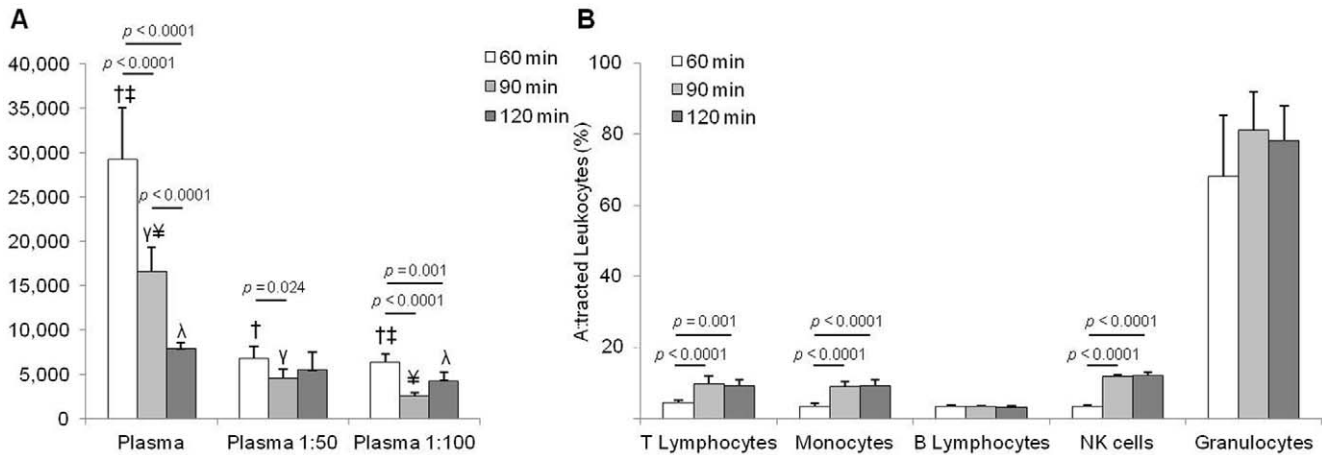


Figure 4. A) Robustness of CBFCA. To investigate the robustness of CBFCA the leukocyte chemotactic activity of undiluted and diluted plasma was determined in time course experiments. CBFCA was able to determine the biological chemotactic activity of diluted and undiluted plasma at 60, 90 and 120 min. **B) Robustness of the incubation time in CBFCA.** CBFCA was performed at different incubation times (60, 90 and 120 min) using total leukocytes and plasma. All the leukocyte subsets reached the top of their migration within 90 min and their proportions did not change at 120 min of incubation time. Granulocytes and B-lymphocytes completed their migration within the first 60 min. Data shown are means \pm SD of five independent assays in triplicate. Means with same symbol are significantly different. Significance was determined by ANOVA and Games-Howell tests ($p \leq \dagger \ddagger \gamma \neq 0.0001$, λ 0.005).

doi:10.1371/journal.pone.0028771.g004

($p < 0.024$). In addition, the migration rate is higher at 90 than at 120 min of incubation when undiluted plasma is used ($p < 0.0001$) (Fig. 4 A). These results indicate that the incubation time for the CBFCFA depends of the chemoattractant concentration. Moreover, the fact that each leukocyte subset has different responsiveness to chemotaxis [7,21] should be considered. Since we mostly use CBFCFA with mixed leukocyte subsets, we performed assays at three different incubation times, using total leukocytes and undiluted plasma. We demonstrated that CFBCFA had a robust incubation time of 30 min, which comprised between the 90 and 120 min of incubation time. Thus, we observed that all the leukocyte subsets reached the top of their migration within 90 min and their proportions did not change at 120 min of incubation time (Fig 4 B). This represents an advantage of this assay when the incubation time needs to be modified according the experimental design. We also demonstrated that granulocytes and B-lymphocytes completed their migration within the first 60 min (Fig 4 B). This represents an advantage of quick incubation time when purified granulocyte or B lymphocyte subsets are tested in CBFCFA. 1:50 and 1:100 plasma dilutions caused the same changes in proportions of leukocyte subsets (data not shown).

Linearity. We demonstrated the linearity of CBFCFA, using purified neutrophils and monocytes and two concentrations of fMLP (10^{-6} and 10^{-3} M). Our data showed that the number of attracted neutrophils and monocytes increased lineally with the starting number of cells. This is an important consideration of the quantitative validity of the end-point measurements. As expected, 10^{-3} M fMLP attracted more leukocytes than 10^{-6} M fMLP in all the cases ($p < 0.0001$). This is further evidence of the sensitivity of CBFCFA, since we observed differences of leukocyte chemotactic activity using the minimal starting number for attraction (500 cells). In addition, although the reported optimal concentration of fMLP for migration is 10^{-6} M, we demonstrated that CBFCFA permitted testing of more concentrated chemotactics (10^{-3} M fMLP). This represents other evidence of robustness in CBFCFA (Fig. 5). We recommend the optimization of leukocyte and chemotactic concentrations before using this assay.

Performance Time. The time required for sample preparation and incubations are similar in CBCA and CBFCFA. However, the time required for staining and cell counting in the latter is reduced by 2–3 hours. This indicates that not only does the CBCFA method provide important additional information regarding leukocyte phenotype; it can be performed in approximately half the time required for the CBCA.

CBFCFA does not require albumin. Many researchers have utilized human albumin (HA) to facilitate the chemotaxis process [8,22,23,24,25,26]. However, these previous investigations did not consider that HA could confound or mask the chemotactic activity of specific chemotactics. Figure 6 demonstrates the interaction between HA and fMLP on leukocyte chemotaxis evaluated by CBFCFA. Albumin itself has significant chemotactic activity (Figure 6, white bars). However, in the presence of 2% HA, the chemoattractant activity of the standard chemical chemotactic agent fMLP was significantly underestimated or “masked” (Figure 6, gray bars). Thus, all our assays were performed without HA to enable a clear evaluation of the biological chemotactic activity. Although the addition of HA has been recommended in assays with monocytes to maintain their viability [32], we suggest avoiding its use for the proposed CBFCFA.

Disadvantages of CBFCFA

As mentioned CBFCFA is a modern assay and therefore there is also a disadvantage; it is more expensive than CBCA since it involves the use of antibodies and flow cytometry. Flow cytometry performance also requires a trained operator and reagents. Overall, we consider that the advantages offered by using CBFCFA compensated for the expensiveness of this assay.

In summary, we have demonstrated that CBFCFA is a precise, specific, sensitive, and robust tool for the *in vitro* quantification of leukocyte chemotactic activity. Our method enables rapid quantification and simultaneous phenotypification of migrating leukocytes, and it is adaptable to biological samples and commercial chemotactics. Importantly, this is the first method that permits the recovery of migrating leukocytes for subsequent analysis and characterization. Knowing the pattern and phenotype

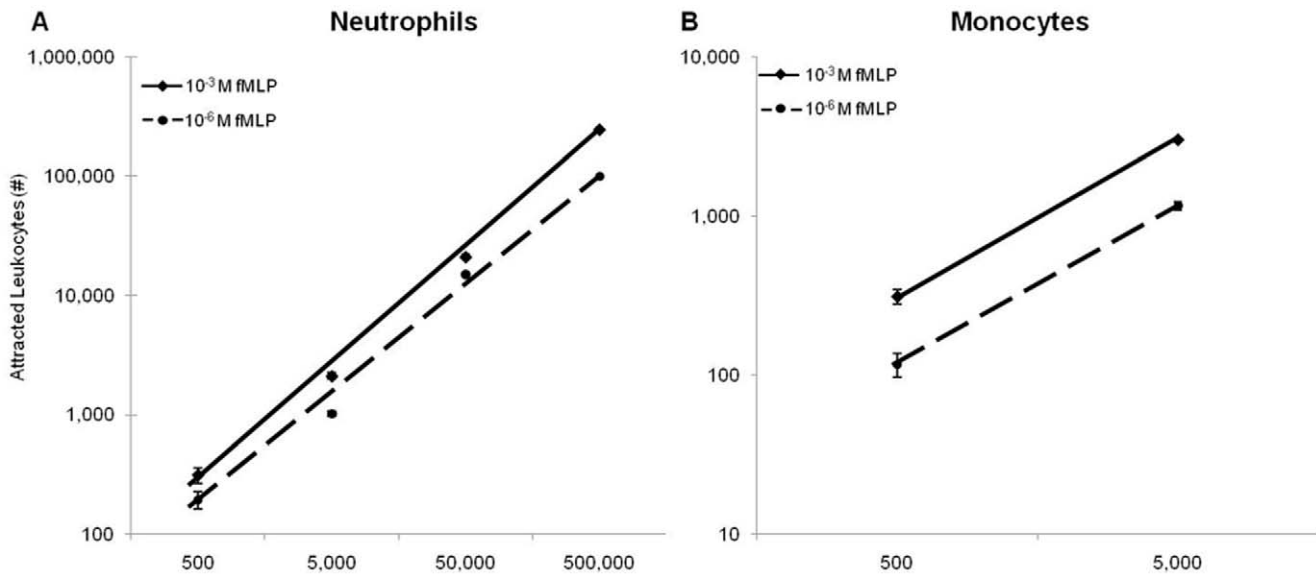


Figure 5. Linearity of CBFC. CBFCs were performed using 10^{-3} and 10^{-6} M fMLP as chemotactic and purified neutrophils (A) and monocytes (B) at different concentrations. The number of attracted neutrophils and monocytes increased linearly with the starting number of cells. Significantly more leukocytes were attracted by 10^{-3} M fMLP than by 10^{-6} M fMLP in all the cases. Data shown are means \pm SD of four independent assays in triplicate. Significance was determined by T test. doi:10.1371/journal.pone.0028771.g005

of migrating leukocytes, novel therapeutic approaches can be developed to target specific leukocyte subsets implicated in immunopathological responses. In summary, the information

attainable by the routine use of this combined assay will further our understanding of both the chemotaxis process and the inflammatory response.

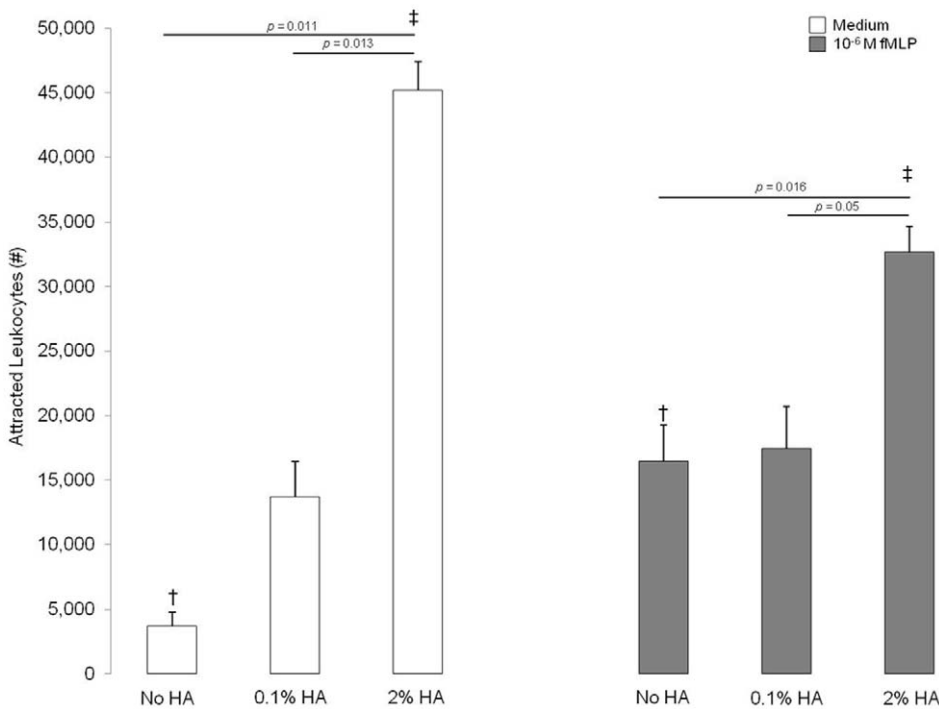


Figure 6. Effect of HA on leukocyte chemotaxis. CBFCs were performed using medium or 10^{-6} M fMLP, in the absence or presence of 0.1% and 2% HA. The addition of 2% HA to the medium and 10^{-6} M fMLP attracted more leukocytes; however, it also masked the chemotactic activity of 10^{-6} M fMLP. Data are shown as means \pm SD of five independent assays in triplicate. Means with same symbol are significantly different. Significance was determined by ANOVA, Games-Howell tests and T test ($p = \dagger \ddagger 0.027$). doi:10.1371/journal.pone.0028771.g006

Acknowledgments

The authors gratefully acknowledge the advice and editorial assistance of Dr. B. F. Mitchell from the Department of Obstetrics and Gynecology, University of Alberta, and Dr. Yvonne Miels from the Discipline of Obstetrics and Gynaecology, University of Adelaide.

References

- Ley K, Laudanna C, Cybulsky MI, Nourshargh S (2007) Getting to the site of inflammation: the leukocyte adhesion cascade updated. *Nat Rev Immunol* 7: 678–689.
- Constantin G, Laudanna C (2010) Leukocyte chemotaxis: from lysosomes to motility. *Nat Immunol* 11: 463–464.
- Boyden S (1962) The chemotactic effect of mixtures of antibody and antigen on polymorphonuclear leucocytes. *J Exp Med* 115: 453–466.
- Lauffenburger D, Rothman C, Zigmond SH (1983) Measurement of leukocyte motility and chemotaxis parameters with a linear under-agarose migration assay. *J Immunol* 131: 940–947.
- Cutler JE, Munoz JJ (1974) A simple in vitro method for studies on chemotaxis. *Proc Soc Exp Biol Med* 147: 471–474.
- Nelson RD, Quie PG, Simmons RL (1975) Chemotaxis under agarose: a new and simple method for measuring chemotaxis and spontaneous migration of human polymorphonuclear leukocytes and monocytes. *J Immunol* 115: 1650–1656.
- Gee AP (1984) Advantages and limitations of methods for measuring cellular chemotaxis and chemokinesis. *Mol Cell Biochem* 62: 5–11.
- Wilkinson PC (1996) Cell Locomotion and Chemotaxis: Basic Concepts and Methodological Approaches. *Methods* 10: 74–81.
- Keller HU, Borel JF, Wilkinson PC, Hess MW, Cottier H (1972) Re-assessment of Boyden's technique for measuring chemotaxis. *J Immunol Methods* 1: 165–168.
- Sorg C, Ramb C, Overwien B, Feige U (1982) Use of a multiwell assembly for chemotaxis and evaluation by enzyme-linked immunosorbent assay (ELISA). *Immunobiology* 162: 192–198.
- Shi Y, Kornovski BS, Savani R, Turley EA (1993) A rapid, multiwell colorimetric assay for chemotaxis. *J Immunol Methods* 164: 149–154.
- Martin LS, Spira TJ, Orloff SL, Holman RC (1988) Comparison of methods for assessing chemotaxis of monocytes and polymorphonuclear leukocytes isolated from patients with AIDS or AIDS-related conditions. *J Leukoc Biol* 44: 361–366.
- Kretschmer R, Collado ML, Pacheco MG, Salinas MC, Lopez-Osuna M, et al. (1985) Inhibition of human monocyte locomotion by products of axenically grown *E. histolytica*. *Parasite Immunol* 7: 527–543.
- Sato E, Koyama S, Takamizawa A, Masubuchi T, Kubo K, et al. (1999) Smoke extract stimulates lung fibroblasts to release neutrophil and monocyte chemotactic activities. *Am J Physiol* 277: L1149–1157.
- Kushner EJ, Weil BR, MacEaney OJ, Morgan RG, Mestek ML, et al. (2010) Human aging and CD31+ T-cell number, migration, apoptotic susceptibility, and telomere length. *J Appl Physiol* 109: 1756–1761.
- Snyderman R, Altman LC, Hausman MS, Mergenhagen SE (1972) Human mononuclear leukocyte chemotaxis: a quantitative assay for humoral and cellular chemotactic factors. *J Immunol* 108: 857–860.
- Zigmond SH, Hirsch JG (1973) Leukocyte locomotion and chemotaxis. New methods for evaluation, and demonstration of a cell-derived chemotactic factor. *J Exp Med* 137: 387–410.
- Koedel U, Kohleisen B, Sporer B, Lahrtz F, Ovod V, et al. (1999) HIV type 1 Nef protein is a viral factor for leukocyte recruitment into the central nervous system. *J Immunol* 163: 1237–1245.
- Kretschmer RR, Stewardson RB, Papierniak CK, Gotoff SP (1976) Chemotactic and bactericidal capacities of human newborn monocytes. *J Immunol* 117: 1303–1307.
- Wierusz-Wysocka B, Wysocki H, Czarnecki R, Siekierka H, Baczyk K, et al. (1983) Influence of hemodialysis on plasma chemotactic activity and the chemotactic responsiveness of polymorphonuclear neutrophils. *Artif Organs* 7: 159–162.
- Harvath L (1983) Heterogeneity of human neutrophil and monocyte chemotactic responsiveness. *Surv Immunol Res* 2: 145–149.
- Patel MK, Clunn GF, Lynn JS, Austin O, Hughes AD (2005) Effect of serum withdrawal on the contribution of L-type calcium channels (CaV1.2) to intracellular Ca²⁺ responses and chemotaxis in cultured human vascular smooth muscle cells. *Br J Pharmacol* 145: 811–817.
- Rudack C, Jorg S, Sachse F (2004) Biologically active neutrophil chemokine pattern in tonsillitis. *Clin Exp Immunol* 135: 511–518.
- Pereira HA, Ruan X, Gonzalez ML, Tsyshkevskaya-Hoover I, Chodosh J (2004) Modulation of corneal epithelial cell functions by the neutrophil-derived inflammatory mediator CAP37. *Invest Ophthalmol Vis Sci* 45: 4284–4292.
- Falk W, Leonard EJ (1980) Human monocyte chemotaxis: migrating cells are a subpopulation with multiple chemotaxin specificities on each cell. *Infect Immun* 29: 953–959.
- Pereira HA, Shafer WM, Pohl J, Martin LE, Spitznagel JK (1990) CAP37, a human neutrophil-derived chemotactic factor with monocyte specific activity. *J Clin Invest* 85: 1468–1476.
- Wilkinson PC (1988) Micropore filter methods for leukocyte chemotaxis. *Methods Enzymol* 162: 38–50.
- Dunzendorfer S, Kaser A, Meierhofer C, Tilg H, Wiedermann CJ (2000) Dendritic cell migration in different micropore filter assays. *Immunol Lett* 71: 5–11.
- Boxer LA, Yoder M, Bonsib S, Schmidt M, Ho P, et al. (1979) Effects of a chemotactic factor, N-formylmethionyl peptide, on adherence, superoxide anion generation, phagocytosis, and microtubule assembly of human polymorphonuclear leukocytes. *J Lab Clin Med* 93: 506–514.
- Ellingsen T, Storgaard M, Moller BK, Buus A, Andersen PL, et al. (2000) Migration of mononuclear cells in the modified Boyden chamber as evaluated by DNA quantification and flow cytometry. *Scand J Immunol* 52: 257–263.
- Schreiner A (1978) In vitro locomotion of human leukocytes. Photographically determined distribution in millipore filters at different incubation times. *Acta Pathol Microbiol Scand C* 86C: 117–121.
- Falk W, Goodwin RH Jr., Leonard EJ (1980) A 48-well micro chemotaxis assembly for rapid and accurate measurement of leukocyte migration. *J Immunol Methods* 33: 239–247.

Author Contributions

Conceived and designed the experiments: NG-L GE-G FV-O. Performed the experiments: NG-L GE-G. Analyzed the data: NG-L GE-G FV-O. Contributed reagents/materials/analysis tools: FV-O. Wrote the paper: NG-L GE-G FV-O.