

Roseworthy Old Collegians Assoc. Inc.



R.O.C.A. digest

Registered at the GPO Adelaide for transmission by post as a periodical - category B

Vol. 11 No.1

DECEMBER 1976

Price 7c

1976 AWARD OF MERIT



The President John Jones
(left) presenting The Award
of Merit to Len Laffer (right)

From the President...

ROSS DAWKINS

This year we had an extremely successful Annual General Meeting and a packed house for the Dinner held at the Princes Berkley Hotel in September.

Some departure from the usual scene has occurred with main office bearers not being on the College as has been for many years. This year Andrew Eastick who lives at Normanville was elected Secretary, Doug Clifford from Balaklava was elected Treasurer and myself as President, living at Gawler River.

We welcome to the Committee two new faces this year being Peter Turley elected as the member from the graduating year, and Bruce McCullum elected as an ordinary member.

Since the Annual General Meeting a Subcommittee of B.C. Philp, C.W. Hooper, I. Rice and J.A. Jones have met to review the Constitution of this Association and their findings have been dealt with by the Committee and will be published at a later date. My thanks go to those gentlemen for their time and effort on this Subcommittee

Due to a lack of real response at the Annual General Meeting to fill the positions made vacant on the Digest Committee and also to ease the work load of the main Committee, Barry Sumner, Reg Hutchinson, Cliff Hooper and Andy Michelmore have taken the "bull by the horns" (with some coopted help from John Jones and Ian Rice) and produced this edition of The Digest.

Recently in the press it was announced there would be a Select Committee to look into the needs of Post Secondary Education in South Australia and a Subcommittee has looked into this and is preparing a submission to this Select Committee on behalf of our Association.

It is with much regret that we learnt of the recent death of Pat Marrie. Pat was a tireless worker for the Association, particularly the Eyre Peninsula Branch and I am sure that all members who knew Pat would pass on their respects to his family.

At the time of writing my thanks must go to Ross Ford who with others was organising a Family Day for members in the south-east, with the hope of reforming this Branch. Keep up the good work and may this be the start of better things to come.

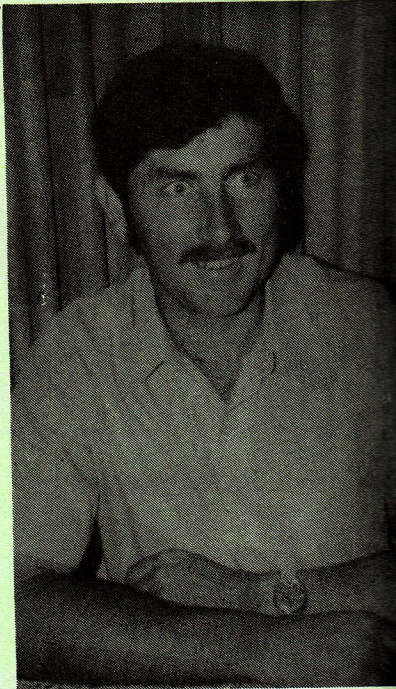
May I on behalf of the Committee and members present at the dinner, thank those members of Wineries who generously donated wines which were enjoyed by those present. A portion of the wines have been retained for the Eyre Peninsula reunion.

MANAGEMENT COMMITTEE

Andy Michelmore
Barry Sumner
Reg Hutchinson
Cliff Hooper
John Jones
Ian Rice

Editorial material to:

The Editor,
ROCA Digest,
Agricultural College,
Roseworthy. 5371. S.A.



1976 AWARD OF MERIT

LEONARD HUGHES LAFFER

Len graduated from Roseworthy in 1933 and then obtained a Bachelor of Agricultural Science in 1934 at Adelaide.

Over the years Len has had a keen interest in Agriculture, not only in the field of teaching, but also in research as an investigating officer and Chemist at Roseworthy College, the Berri Co-operative Packing Union and then as Production Manager at the Barossa Canneries Pty. Ltd.

He has been a practising land valuer for many years and is regarded as one of the top valuers in South Australia. He has often been asked to provide independent valuation for the Government. Len was a member of the South Australian Board of the Australian Institute of Valuers, and is still a member of the Board of Examiners of that Institute.

Presently Len is Chairman and Managing Director of Basedow Wines Pty. Ltd. Through his efforts this Company now remains as a South Australian owned venture.

Len has been a keen sportsman having an interest in Cricket, Hockey, Rowing and Golf.

He has been associated with many organizations, such as the Agricultural Bureau, the Glenelg Beefsteak and Burgundy Club, the Coromondal Valley Branch of the National Trust, Monarto Committee and the Roseworthy Old Collegians Association.

In the period of time on the R.O.C.A. Committee in 1955 to 1960 his efforts as a member and secretary of the Land Settlement Committee, which comprised all the major rural organizations and R.O.C.A., were all instrumental in pressing the then Government into revising the Graduates Land Settlement Act and the advances to Settlers Act which lead to the creation and legislation of the Rural Advances Guarantee Act.

His firm belief in the value of an education at Roseworthy and the contribution which College graduates can make in agriculture and allied industries, resulted in his sending both his sons to study and obtain their Diplomas at Roseworthy.

annual report

1976 ROSEWORTHY OLD COLLEGIANS ASSOCIATION

ANNUAL REPORT by J.A. JONES - PRESIDENT

Over the last 12 months the Committee have discussed issues and implemented decisions centred around; not just one, but all objectives of the Association.

The Association objectives are -

- 1) to promote the interest of the College
- 2) to promote unity and good fellowship amongst old Collegians
- 3) to stimulate and encourage members to develop their agricultural interest
- 4) to encourage discussion in matters relative to agriculture

At an early committee meeting, concern was expressed about three separate subjects, but all being interrelated. These being -

- a) the professional standing of the R.D.A.
- b) the rapid development of the rural studies certificate within the Department of Further Education
- c) and standards for entry to the Roseworthy Diploma of Agricultural Technology.

Clarification was obtained from Mr. Hopgood, the Minister of Education and Dr. Williams, the Director of Roseworthy.

With the opening of the Australian Bonds Series at 10½% proceedings were taken to convert all bonds into this series, but by the time redemption could be effected the Series had been lowered to 9½%. The Association now has \$10,300 at 9½%, \$2,000 at 10½% and \$2,000 non-redeamable until 1979 and 1982 at much lower %, all in Government Bonds.

Liaison with the College has continued throughout the year. Use of the College facilities for meetings and for preparation of the R.O.C.A. Digest have been most welcome. We appreciate the support given, by Dr. Williams to the work of the Association.

The Digest has continued to strengthen as the backbone of the Association, and I am grateful to Reg Hutchinson and Gavin Eckersley as members of the management committee for their contributions. I would like to express my appreciation to Ian Rice, Ross Dawkins, and Doug Clifford for their untiring, co-opted help with the Digest for collating and placing in envelopes for posting.

It is appropriate that I mention the excellent art work, and support by Graham Lavis and Paul Evans of the College printing department in the preparation of the Digest.

In February I attended the Eyre Peninsula Branch A.G.M. and reunion, and the Riverland Branch reunion in September.

The South Eastern Branch has been inactive for many years. With the distance from Adelaide; and the large number of members in the area it is appropriate that this branch be reformed. Ross Ford has expressed an interest in this, and I would hope during the coming year this branch will flourish. I must stress though, for success, a great deal of support will be required for those reforming the branch.

For the Association to continue its strength, old Collegians must have the desire to join the Association. Students of Roseworthy, therefore, must be informed of the old Collegians activities and objectives. The Committee and members must continue to utilize a-1 the objectives of the Association and not allow our function to be only of a social nature. Our objectives clearly provide for the maintenance of the professional standing of the agricultural graduate especially those of Roseworthy.

We have an intimate interest in the College, because our professional respect depends ultimately on the recognition of Roseworthy College as a resource of agricultural technologists.

A.T.A., The Agricultural Technologists of Australasia, is a professional body representing the Agricultural College Graduate. In South Australia R.O.C.A. and A.T.A. South Australian branch, both have an interest in Roseworthy and its graduates. To this end, I have initiated a liaison between both Associations, which I believe will ultimately provide a good standing for the professional standing of the Agricultural College Graduate.

In March I represented R.O.C.A. as a Guest of A.T.A. at their State Branch Annual General Meeting.

The two R.O.C.A. awards to the students were increased in value this year, to \$100 for the old student cup and \$50 for the sports award.

Andrew Eastick was awarded the Old Student Cup
Bill Close the Sports Award.

The Award of Merit, this year, has been awarded to Mr. Len Laffer. Mr. Laffer's interest in the affairs of the Old Collegians Association, his belief in education at Roseworthy and his development role in the canned fruit juice and wine production industries make him an outstanding recipient.

I believe our Association has been very successful this year, mainly due to the dedicated team work of the Committee. I would like to thank those people associated with the Committee for their help and inspiration.



The newly elected Treasurer
Doug Clifford with retiring
President John Jones and mem-
ber John Gursansky at the
September Reunion.

VALE Pat Marrie

Mr. M.C.K. (Pat) Marrie who died at Cummins on October 21 was a well known district identity respected throughout the farming and sporting community.

He was born in Perth Western Australia in 1908 and ten years later moved to Adelaide where in turn he attended "Scotch", "Queen's" and "St. Peters" Colleges.

A scholarship in 1925 took him to Roseworthy Agricultural College, where he graduated with honors in 1929.

He gained agricultural experience working on properties first in South Australia and then in Western Australia where he stayed until 1936 before finally settling on a sheep-wheat farm at Cummins remaining there until his death.

He married in 1940 and is survived by his wife, Jean, daughter, Josie and son, Adrian.

Sport and sportmanship influenced his way of life. He excelled particularly in tennis and golf both at school and during his later years at Cummins, taking a keen interest in the activities of the various local clubs right up until the last weeks of his life.

He was patron of the local tennis and colts cricket clubs being known as an ever-ready trophy donor.

Fishing was an interest of almost dedication and he delighted in showing his abdominal scars inflicted by a shark - his humour was ever present and he was never known to be stuck for an appropriate story.

Pat was actively associated with the Cummins A. & H. Show Society, was for a number of years people's warden in the Anglican Church of St. Simon and St. Jude and founded the Cummins Beef Steak and Burgundy Club in 1968 serving a term as president.

He was Eyre Peninsula branch president of the St. Peters Old Collegians Association and was president of the local branch of the Roseworthy Old Collegians Association from 1966 to 1974. Pat will be ever remembered and appreciated for his efforts on the behalf of those organisations.

Many "old collegians" were in attendance at his funeral as an expression of gratitude and respect for a job well done.

His spontaneous and enduring enthusiasm in all his endeavours endeared Pat Marrie to his many friends and he will be greatly missed as a valued member of the community.

1976 Annual Reunion Dinner

As reported by Cliff Hooper

Last year the Committee was very happy with the attendance, but 1976 saw a further rise in attendance, 118 being present. So it seems that the Berkeley Hotel on a Friday night has done the trick, despite the absence of topless waitresses.

As the Annual General Meeting was rather crowded a group started another meeting in the bar and there was quite a gathering before we moved upstairs to the dinner.

All that is required for a successful dinner is good food, good drink and good company - and this was provided. The Berkeley served a very good meal, wines donated by

Tollana	Hoffmans
Wilsford	Orlando
Leo Buring	Yalumba
Light Wines	The Cellars
Basedow's	Roseworthy College
Southern Vale Coop.	Saltram
Hardy's	Seaview

were greatly appreciated and there was plenty of good company. We must give a special thank you to our wine donors.

It was good to see Len Laffer receive the Award of Merit - congratulations Len. In addition to his qualifications for the award, over the years Len has been a great worker for ROCA, serving on the committee for a long period.

The 25 and 10 years ago groups were well represented and the introductions were in the capable hands of Jack Richards and Adrian Smith. It is pleasing to see that so many from interstate make the effort to attend these gatherings.

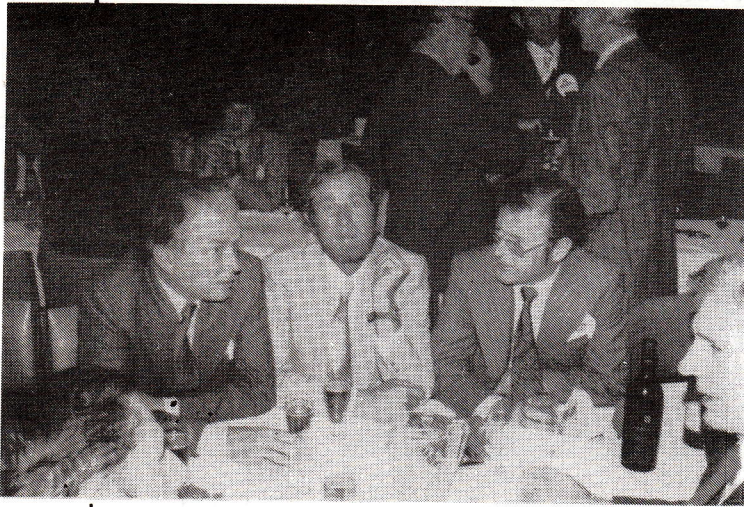
Perhaps I should mention a couple of names - Bill Meaney, 1907, was the oldest Old Collegian present - still very active and busy. Of course no dinner would be complete without "Philpy" - still as bright as ever.

As the crowd dwindled at a late hour I noticed a member from the Micham A.F.A. still sampling the red wine.

Our congratulations to the Committee.



The 10 YEAR AGO Table
included Keith Cowley, Peter
Cocker and Max Clarke



At the 25 YEAR AGO Table,
Ian John, Ian Cleggett and
George Mocatta.

COLLEGE POLL SHORTHORN SHOW RESULTS, 1976

December '75 with selection of prospective show stock heralded what to us became a very successful year.

Following intensive training of both the animals and 1st year students, the younger show stock were entered in the Gawler Show as a prelude to the Adelaide Royal. The results were extremely encouraging with the following awards gained:

- . Bulls 15-18 months 2nd, 3rd and 4th
- . Heifers 15 - 18 months 1st, 2nd

All Breeds Classes

- . Colcairn Trophy for pair 1st
- . Breeders Group 3rd
- . Sires Progeny Group 3rd

The Adelaide Royal Show became far more serious with the intensive effort of the students showing dividends throughout the judging.

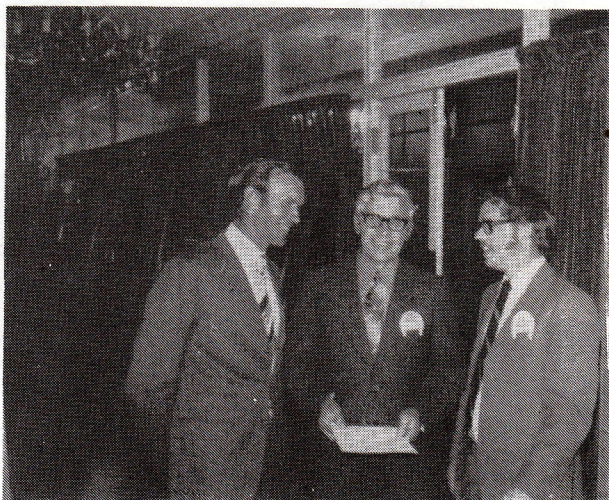
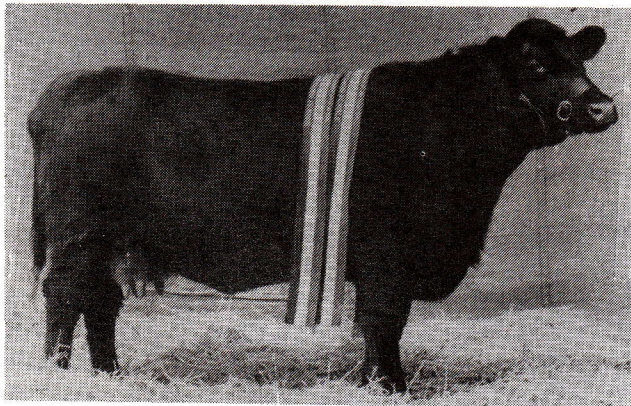
The highlight of the awards was Roseworthy Fancy Bud 28th receiving Grand Champion Female Sash following winning her class and Senior Champion female.

This award was the first Grand Champion sash that the College has received since 1967, when Cliff Hooper (Studmaster at that time) won the Supreme Poll Shorthorn Sash with Roseworthy Leopold.

Other awards that were won were:

Bulls	14-16 months	2nd
	16-18 "	3rd and 5th
Heifers	16-18 "	4th and 5th
Sires Progeny Group		3rd

Roseworthy Fancy Bud 28th out of Roseworthy
Fancy Lady 23rd, sired by Elsinora Impact



Rex Anderson, Rex Krause and
Tim Prance at the 1976
Reunion.

COLLEGE DAIRY CATTLE SUCCESSFUL AT THE ROYAL ADELAIDE SHOW

The College returned to the Show Ring and entered dairy cattle in both the Gawler and Adelaide Shows this year.

The judging of cattle in the Show Ring is the least scientific and most subjective method of appraising dairy stock. However, the exhibition of College cattle before the public shows the College's involvement in Dairying and any show awards complement the high production figures of the College herd.

Six cattle were shown at Gawler on Saturday 21st September and nine ribbons were won. A week later five cattle were taken to Adelaide and five ribbons were won. Our herd sire, Crystal Brook Haughty Nixon was Champion Jersey Bull, defeating Victorian competition for the title. Mr. Jack Bramley gained 2nd placing in the Herdsman's Competition, which involves exhibiting four cattle, including one bull. Students David Thompson, Rhona Clearie and Caroline Tarr cared for the stock during the Show.

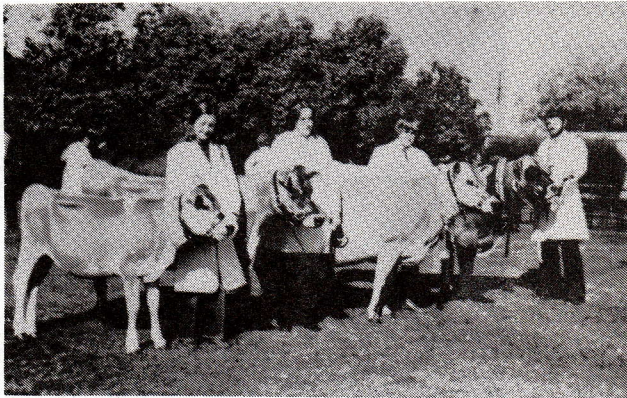


Photo of College cattle as exhibited in the Herdsman's Competition. Left to right: Caroline Tarr, Rhona Clearie, David Thompson and Jack Bramley.



Bill Edge, Noel Burge and Dick Turnbull reminisce over a red.

Bill Piercy and Mal Woods deciding whether to have another one?

a few drinks amongst friends



Graham Fromm, Spike Jones, Martin Cochrane and Trev March, beer drinkers from 1967.



John Steed listens to Jack Mertins memories, while David Purser clutches his beer.



NEWS FROM MEMBERS

A reunion was held on the 31st July by 1975 R.D.A. graduates.

Thirty-five of the forty graduates turned up for the weekend get-together at Andrew Pike's Goolwa house. It is interesting to note that of the twenty graduates who did not return to do the R.D.A.T., four have so far been unable to get permanent employment.

Bill Close,
Newbold North,
Gawler River.

Tom Usher is now studying full-time for a degree of Commerce at the University of Queensland. He hopes to finish next year and his aim is to gain accountancy qualification and membership of the Australian Society of Accountants.

Tom Usher,
Flat 4,
15 Down Street,
Bowen Hills, 4006.
Queensland.

Gavin G. McEwin, after forty-two years Dairy Farming at Meadows sold out in 1974. He is now Valuer to the Meadows District Council after having been in private practice as a Valuer at Woodside for two years.

He was most impressed with Dr. Williams at the A.T.A. Dinner.

Gavin G. McEwin,
32 Nairne Road,
Woodside, 5244.

LETTERS to the editor..

Dear Sir,

In a recent ROCA publication I read of a request for information about the use of horses in the early days.

My recollections are of horses in the late twenties. The stallions CYRUS and LORD HOPETOWN were used to sire a dozen or so foals each year, the practice then being to break in the fillies at three or four years old, work them for twelve months and get them in foal early at about four or five years old, after which they would not be bred from until needed in the brood mare group - the reasoning being that if bred from when young there was less difficulty in getting them in foal when mature.

So many of the old students would remember horses like TOGO and INCH. TOGO used to pull the dray collecting the stable manure, he would do everything without a driver, stop at each stall, turn at end of each lane and take dray to manure pit and back it into position for unloading.

INCH soon learned that if he appeared to be lame he wouldn't be required to work. Because he wasn't working he was used to demonstrate the method of throwing a horse. To do so he was first taken to an empty bay in the hay shed where the ropes were put on and the students proceeded with the operation of throwing under the direction of "Mooty" Place, B.Vet.Sc. M.R.C.V.S. etc. etc.

This went according to plan on the first two occasions, but on the third occasion INCH lay down on the straw even before the ropes could be put in position.

Vic Fairbrother drove the drill for the quarter-acre trial plots and used HAWICH, MOFFAT and LANARK - a fast stepping trio which must have been a pleasure to drive.

Some ninety odd horses were yoked each day in teams varying in size from pairs to twelve abreast, or two six's in tandem.

I am sure students of the twenties and early thirties would be able to supply information worth collecting.

Yours faithfully,
JIM CUTHBERTSON

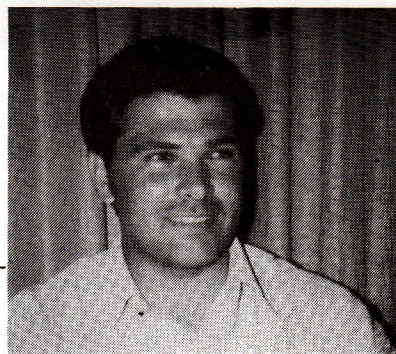


Chris O'Donnell celebrating the 10th anniversary of his graduation with Cliff and Art Hooper. John Kohnke (1967) looks on.



The old gentleman from 1907 - Bill Keane.

ROSEWORTHY ROUNDUP REG HUTCHINSON



NEW DEVELOPMENTS

Developments at the College are continuing, and the "Roseworthy News" supplement to this edition of the Digest gives details of Academic developments, including the proposed courses for 1977.

NEW FUNDS

Funds have been made available for a Student Union Building (\$310,000) and Accommodation facilities (\$400,000). "These facilities are urgently needed" said the Director, Dr. Don Williams, "to cope with increased enrolments. We plan to enrol 330 students in 1977, compared with 270 now and 242 in 1975".

From initial investigations, it appears that it may be more economical to construct standard four bedroom houses to provide the necessary student accommodation, rather than the conventional Accommodation Block originally proposed. Students have expressed a preference for the house type accommodation compared to dormitories, some being accommodated in two ex-staff houses during the past year.

NEW STUDENTS

Seven graduate students from Near East and North African countries are currently undertaking the new Graduate Course in International Agriculture. This course is being provided by Roseworthy Agricultural College, by arrangement with, and financed by, the Food and Agriculture Organisation of the United Nations (F.A.O.).

The students (and the names by which they prefer to be known) and their home countries are:

ADY Mazen Ady Suleiman (Ady)Jordan
BABURI Mohammed Akbar (Akbar)Afganistan
HADDAD, Ali (Ali)Tunisia
KATRACH Juma Atoabaker (Juma)Libya
MAAMERI Abdelkerim (Kerim)Algeria
SAFARZADGAN Manouchehr (Safar)Iran
PHOTIADES, Ioannis (John)Cyprus

These students spend a large portion of their time on educational tours to the different agricultural areas of the state. They were recently shown over some of the research plots at Waite Institute by Ray Norton.

NEW GRADUATES

The year has drawn to a close for the Agriculture students. Fifty have sat for their R.D.A. (including eight young ladies) and a further twenty-two have completed the R.D.A.T.

R.O.C.A. will now have to become "Co-ed".

The Wine courses have also wound up for another year with sixteen completing the new two-year Associate Diploma in Wine Production and Marketing. About half of these are already committed to positions in the wine industry, including the retail marketing and tourist aspects of the wine trade.

THE FARM

Despite signs of some relief with above average rains for October, the season has certainly brought its problems, with Roseworthy College being no less affected than others in the rural areas. We could be even more affected due to our more intensive production than most farmers. Reasons for our intensive farming are not only to demonstrate the best of technology and generate economic data for teaching purposes, but also to give students practice in all areas of farming skills and technology while under proper supervision.

A meeting of the Farm Committee was called in August, when conditions looked like being serious, to determine a Drought Plan for 1976/77. As a result of decisions made by the Farm Committee, the following reductions in College stock numbers were recommended and have now been effected:

Sheepfrom 2,000 to 1,300
Dairy Milkersfrom 90 to 45
Beef Herdfrom 150 to 75

(at one stage a better price was being received for cull hens than for surplus sheep).

The meeting also revealed that, due to a lack of Drought Reserves from recent years, there would be a deficiency in the fodder available for the next twelve months, even after stock reductions and this year's expected harvest are taken into account. The College is therefore still relying on fodder purchases; with 90 tonne of barley being withdrawn from the Roseworthy silos and 2,000 bales of hay delivered from Owen in September, and more recently 430 tonnes of hay purchased from the South-East in addition to 120 tonnes of oats being purchased when available.

The Dairy section are attempting to relieve the situation by trying out various alternative feestuffs. At present, they are successfully feeding a ration of Poultry litter and grain to the dry stock. The ration, which works out at half the cost of hay, consists of:

- 50% Poultry litter
- 24% Crushed Wheat
- 25% Crushed Barley
- 1% Minerals

They are fed 4.5 Kg of mix plus 4 Kg low quality cereal hay per day. No difficulty was experienced in getting the cows to take the ration and at the moment they are doing very well on it. The next step, to reduce costs further, is to replace the grain component with orange peels. It has been suggested that a 50/50 milled mixture of orange peels and Poultry litter could be ensiled for stock feed.

The drought doesn't appear so evident on the corner of the Roseworthy road. This is the site of some of the Plant Breeding plots which have been irrigated to enable the breeding programme to continue. Other important plots in the Plant Breeder paddock, North-West 4, have also been watered, using the old fire truck.

PRACTICAL WORK

A proposed new timetable for next year, if adopted, will increase the component of practical work (Farm Practice) in the R.D.A. course. The old three-week timetable will change to a one week timetable, with First Years working Monday and Tuesday, Second Years work Thursday, Friday and the weekend if necessary, and Third Years return to the work force by working the Wednesday.

This is in addition to five weeks of approved "off-College" experience undertaken during vacations in the R.D.A. course.

EYRE PENINSULA TRIP

Late in September I was fortunate enough to be able to accompany the R.D.A.T. students and the International students with Basil Sheahan, Ken Leske and Basil Baldwin on a combined trip to the Eyre Peninsula.

We stopped off firstly at Port Pirie where Bob Freak, Senior Inspector in Horticulture, showed us vegetable growing in the nearby areas. At Cleve we were ably looked after by Garry McPhie, Jim Cawthorne and Jack Jones and this included a visit with the Murdinga Bureau group. Around the Port Lincoln district we were in the capable hands of Venton Cook, Ken Holden and Sam Inglis. The itinerary included a look at the Government project for killing drought affected sheep and other things ranging from strawberries to tuna.

On the return via Cleve we looked in at the work of Kym Woods and Geoff Slattery at the Cleve Area School.

IMPORTED WEEVILS

Biological control of Three-Corner-Jack has begun at R.A.C. with weevils especially flown down from Queensland by the C.S.I.R.O. The weevil (*Apion antiquum*) burrows into the stem, hatches eggs, and the larvae then eat the plant.

STAFF

The staff list continues to grow, and among the new appointees is a full time butcher and instructor in slaughtering.

Mr. Brady has retired after nearly thirty years at the College and his position has been filled by Mr. Idris Muthy from the Zoology Department of the Australian National University. Jack Foot also leaves us for his retirement at the end of this year.

Ray Carter, Senior Farm Hand, Agronomy (and an Associate member of R.O.C.A.) has recently returned from a trip to Darwin. He comments that reconstruction of Darwin is well on the way, with damaged houses renovated, new houses under construction, regrowth of trees and debris cleaned up.

Ray visited the Berrimah Experimental Agricultural College. Roger Haensel (R.D.A.T. 1973), technical officer, is at present experimenting on tick virus in buffaloes, believed to be immune from it. Ray contacted Jon Sims (student 1972-74) now in the police force and also Lindsay Wright (R.D.A. 1970) and Peter Bowey (R.D.A.T. 1971) Rural Officers who also read the news and weather on A.B.D. Channel 6. Richard Flockhart (R.D.A. 1973) and his family still run a horse riding school; Richard won a Churchill Scholarship for animal nutrition and is Assistant Manager at Southern Plains Experimental Station.

Berrimah Experimental Station was damaged by Cyclone Tracy, but very little repair work has been done and new buildings started two years ago are not completed due to shortage of finance from the Government.

SOCIAL ACTIVITIES

Staff had a family day on the College oval early in October with Bar-B-Q, Canteen and Model Steam Train Rides. Ron Smallwood's efforts in establishing a Model Steam Train Track alongside the oval were well appreciated by lots of kids.

Farewell and welcoming parties, conferences and meetings take up a large portion of the work load of many of the staff.

The most exciting event on Sports Day was the tug-o-war won by the girls' team. The Sports Day was followed by a Folk Dance in the grader shed, featuring the Bardic Bush Band.

ROCA DIGEST COMMENT

Many old students will remember Dolph Baker, Lecturer in Dairying until about 1938. One of his strong points (and he had many) was his keen interest in herd improvement. He urged all dairymen to "Buy a good Bull and serve the cows yourself". All sorts of erotic connotations were imagined by his students.

Things have not changed much in forty years. We read in last issue of Digest that Ian Coombs has been to Muresk on a short course on Artificial Insemination so he can inseminate his own cows. What next!

Andy Milchelmore,
Nuriootpa.



L to R - Andy Michelmore,
Cliff Hooper and Barry Sumner
at work in the preparation of
this Digest.

Eyre Peninsula Branch Reunion

We have received a couple of shots of the 1976 Eyre Peninsula Branch Reunion from Ken Holden. As can be seen they come from near and far to attend this popular occasion.



From left: Jon Shipard (Penong), John McFarlane (Cowell), Ken Holden (Pt. Lincoln), Philip and Michael Michelmore (Andy's lads) with Andrew Beach (Butler Tanks) and Ian Newland (Ungarra) on the right.



Another table group were Andy Michelmore (Nuriootpa), Jack Jones (Cleve), Des Habel, David Hill, Venton Cook and Bill Giles (all of Pt. Lincoln), Kim Woods (Cleve), Michael Greenfield (Kielpa), Dennis Pedler, Pat Marrie and Grant Hayman (all of Cummins), Garry McPhee and Geoff Slattery (of Cleve), B.C. Philp and Wally Goulter (of Adelaide) with Alan Lawes (Wanilla).

Eyre Peninsula Reunion 1977

Saturday 26th and Sunday 27th February

Pier Hotel - 11 a.m. Family get-together

Pier Hotel - Annual General
Meeting & Dinner

Tasman Hotel - Ladies Dinner

Billylight Beach - Family Picnic

Full details from:

Ken Holden,

Hon. Sec. Eyre Peninsula Branch ROCA,
PORT LINCOLN. 5606.

BE IN IT

VACATION JOBS FOR STUDENTS - ARE YOU ABLE TO HELP?

A committee has been set up to advise the College on its Agriculture and Farming courses. The members of this committee include representatives from agricultural businesses and as such includes several Old Collegians. (Brian Jefferies, Grant Mayfield, Jack Mertin, Milton Spurling, Don Puckridge, Phil Young, Paul Hewton, Jim Pocock and John Skull).

The main role of this committee is to ensure that the courses at the College meet the needs of employers, and as such has already made helpful recommendations including the area of practical work.

Students are required to complete five weeks of "Off College" experience as part of the practical requirement of the course. The Advisory Committee has recommended that the College should develop a list of farmers who students may approach for this "Off-College" practical work if in difficulty obtaining vacation employment.

If you are interested in providing employment to students to assist them in achieving their practical work requirement, fill out the slip below and return it to the College.

Name

Address (Postal)

Location of Property

.

.

Type of Property

(e.g. Wheat/Sheep; Citrus/Vines etc)