

PUBLISHED VERSION

Sime, Fekade Bruck; Roberts, Michael S.; Peake, Sandra Lois; Lipman, Jeffrey; Roberts, Jason A. [Does Beta-lactam pharmacokinetic variability in critically ill patients justify therapeutic drug monitoring? A systematic review](#), Annals of Intensive Care, 2012; 2:35

© 2012 Sime et al.; licensee Springer.

This is an Open Access article distributed under the terms of the Creative Commons Attribution License (<http://creativecommons.org/licenses/by/2.0>), which permits unrestricted use, distribution, and reproduction in any medium, provided the original work is properly cited.

PERMISSIONS

<http://www.springeropen.com/authors/license>

Anyone is free:

- to copy, distribute, and display the work;
- to make derivative works;
- to make commercial use of the work;

Under the following conditions: Attribution

- the original author must be given credit;
- for any reuse or distribution, it must be made clear to others what the license terms of this work are;
- any of these conditions can be waived if the authors gives permission.

9th September 2013

<http://hdl.handle.net/2440/79821>

REVIEW

Open Access

Does Beta-lactam Pharmacokinetic Variability in Critically Ill Patients Justify Therapeutic Drug Monitoring? A Systematic Review

Fekade Bruck Sime^{1,2}, Michael S Roberts^{1,2,3}, Sandra L Peake⁴, Jeffrey Lipman^{5,6} and Jason A Roberts^{1,5,6,7*}

Abstract

The pharmacokinetics of beta-lactam antibiotics in intensive care patients may be profoundly altered due to the dynamic, unpredictable pathophysiological changes that occur in critical illness. For many drugs, significant increases in the volume of distribution and/or variability in drug clearance are common. When “standard” beta-lactam doses are used, such pharmacokinetic changes can result in subtherapeutic plasma concentrations, treatment failure, and the development of antibiotic resistance. Emerging data support the use of beta-lactam therapeutic drug monitoring (TDM) and individualized dosing to ensure the achievement of pharmacodynamic targets associated with rapid bacterial killing and optimal clinical outcomes. The purpose of this work was to describe the pharmacokinetic variability of beta-lactams in the critically ill and to discuss the potential utility of TDM to optimize antibiotic therapy through a structured literature review of all relevant publications between 1946 and October 2011. Only a few studies have reported the utility of TDM as a tool to improve beta-lactam dosing in critically ill patients. Moreover, there is little agreement between studies on the pharmacodynamic targets required to optimize antibiotic therapy. The impact of TDM on important clinical outcomes also remains to be established. Whereas TDM may be theoretically rational, clinical studies to assess utility in the clinical setting are urgently required.

Keywords: Pharmacokinetics, Pharmacodynamics, Beta-lactam, Antibiotics, Therapeutic drug monitoring, Critically ill

Review

Introduction

Emerging evidence suggests that optimizing antibiotic dosing may be a key intervention to improve outcomes in patients with sepsis and septic shock [1-7]. Nonetheless, dose optimization in this critically ill population remains a significant clinical challenge.

Pathophysiological alterations associated with critical illness can lead to both an increase in the apparent volume of distribution of an antibiotic as well as in clearance; thus potentially leading to subtherapeutic plasma concentrations at the site of infection, treatment failure, and the development of antibiotic resistance [8-11]. Conversely, the development of renal and/or hepatic

impairment may be associated with the rapid onset of toxic drug concentrations.

Despite considerable knowledge of the potential issues associated with inadequate antibiotic dosing and the consequences of therapeutic failure, clinicians have little data to guide practice. Although antibiotics are administered frequently in the critically ill [12], to date only a limited number of pharmacokinetic (PK) studies have been undertaken. Instead, the focus has largely been on the avoidance of toxicity from elevated drug concentrations. Accordingly, the available dosing guidelines often are based on PK data obtained from healthy volunteers or noncritically ill patients, with little consideration for the sepsis-induced PK changes that may occur [13]. Moreover, interindividual PK variability in the critically ill, and the consequent unpredictability of drug concentrations, suggests that an empirical fixed dose strategy is unlikely to be successful [14,15].

* Correspondence: j.roberts2@uq.edu.au

¹School of Pharmacy and Medical Sciences, University of South Australia, Adelaide, Australia

⁵Burns, Trauma, and Critical Care Research Centre, The University of Queensland, Herston, Brisbane, QLD, Australia

Full list of author information is available at the end of the article

Although there is a good understanding of the role for therapeutic drug monitoring (TDM) to optimize dosing for drugs with a narrow therapeutic index (e.g., aminoglycosides, glycopeptides), limited data are available regarding TDM of antibiotics with wider therapeutic indices, such as the beta-lactam class of antibiotics [13]. TDM for these antibiotics has been traditionally seen as unnecessary. However, recent data suggest that there is a relationship between beta-lactam antibiotic target exposure and clinical outcomes in the critically ill. In addition, the reported PK variability of these antibiotics suggests that many patients do not achieve their target exposures.

Although published opinion supports the use of TDM to optimize antibiotic therapy for drugs not traditionally subject to TDM (i.e., beta-lactams) [15-17], this role has not been subjected to a structured literature review.

Purpose

The purpose of this review is to describe the PK variability of beta-lactam antibiotics and to discuss the potential utility of TDM to optimize therapy for critically ill patients.

Search strategy and results

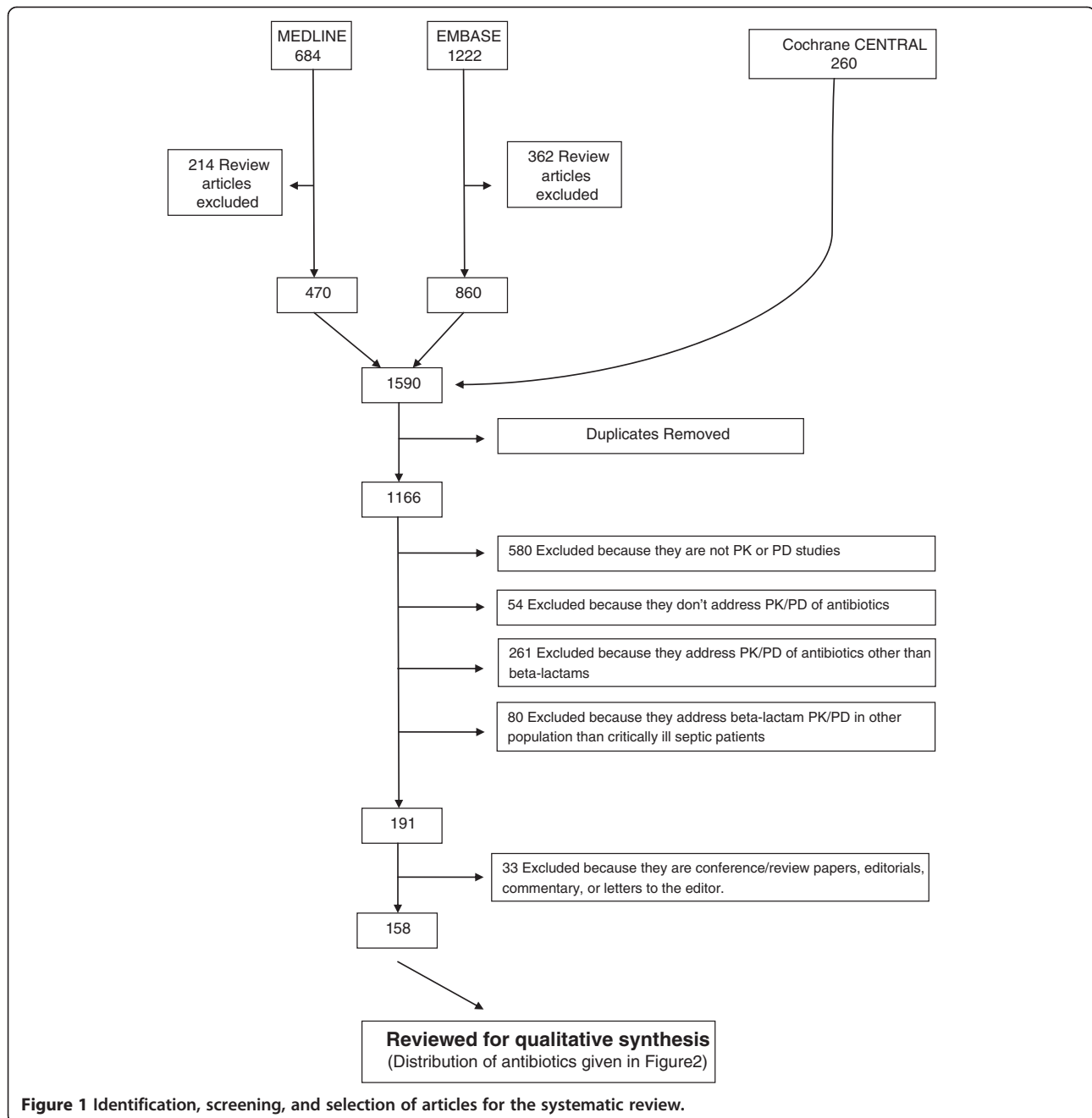
Medline (1946 to October 2011), Embase (1947 to October 2011), and the Cochrane Central Registry of Controlled Trials databases were searched for key words to extract data. The search terms were: (1) Pharmacokinetic*, pharmacodynamic*, concentration*, clearance, volume of distribution, target concentration intervention, therapeutic drug monitoring, therapeutic drug management, dosing, dose, kinetics; (2) beta-lactam*, antimicrobial*, antibacterial*, antibiotic*, ampicillin, dicloxacillin, penicillin, flucloxacillin, piperacillin, cephalothin, cefazolin, ceftriaxone, ceftazidime, cefepime, meropenem, ertapenem and; (3) intensive care, critically ill, critical illness, critical care, sepsis, septic shock, h(a)emofiltration, intermittent hemodialysis, extended dialysis, sustained low-efficiency dialysis, slow-flow dialysis. Each search was limited to the English language and human studies. Finally searches (1), (2), and (3) were combined. Studies from the extensive files of the authors also were eligible for inclusion. A total of 158 original research articles describing the PK and pharmacodynamics (PK/PD) of beta-lactam antibiotics in critically ill patients were reviewed for qualitative synthesis (Figure 1). A relatively large number of studies related to the PK/PD of cefepime, ceftazidime, meropenem, and piperacillin in the critically ill. However, there was limited published data for many commonly prescribed antibiotics, which tend to be of narrower spectrum (i.e., ampicillin, cephalothin, cefazolin, ceftriaxone, dicloxacillin, ertapenem, flucloxacillin, penicillin; Figure 2).

PK/PD variability of beta-lactam antibiotics in the critically ill

Significant, unpredictable, beta-lactam PK variability is well-documented in the critically ill (Table 1). Increase in the volume of distribution (potentially by several-fold) is common [18-27] primarily due to expansion of the extracellular fluid volume (edema). Elimination half-life also can be prolonged due to the increased volume of distribution [21,28-30]. Conversely, clearance may be unchanged [21], decreased [20,22] or even elevated as a result of augmented renal clearance (ARC) in the hyperdynamic phase of sepsis (resulting in sub-therapeutic concentrations of renally cleared antibiotics) [24-26,31]. Enhanced elimination also can be due to a hypoalbuminemia-related reduction in protein binding, particular for highly bound antibiotics, such as flucloxacillin and ceftriaxone [27,28,32].

Whereas some studies have reported achievement of PD targets in the critically ill with standard beta-lactam dosing strategies used for noncritically ill patients [20,40,41], many others have demonstrated that such empiric antibiotic dosing is insufficient to achieve appropriate PD targets [20,26,27,36,42-48]. These divergent reports reflect the significant interpatient PK variability that occurs in the critically ill. Treatment failure with inappropriate dosing is of particular concern for pathogens with a high minimum inhibitory concentration (MIC) [14,49]. Septic patients also may benefit from higher doses, particularly in the initial 24-48 hours of therapy [38,42,43,50]. Of note, however, even with an increased dose, the attainment of PD targets may still be unreliable, because beta-lactams have predominantly time-dependent kill characteristics, i.e., the time that the unbound (or free) concentration is above the MIC ($fT_{>MIC}$) is the major PK/PD index associated with bacterial killing [51-53]. Consequently, the goal of beta-lactam dosing is to optimize the duration of exposure above the MIC during the dosing interval. Increased time above MIC may be achieved by more frequent dosing or by changing the mode of administration from an intermittent bolus injection to either an extended or continuous infusion. The PK of beta-lactam continuous infusions has been most extensively studied for ceftazidime [35,54-59]. However, the clinical superiority of a continuous infusion (versus intermittent injection) for beta-lactams is yet to be established [60].

A further consideration for optimizing antibiotic exposure relates to antibiotic penetration into the interstitial fluid (ISF) of tissues, which is the site of most infections. Data show antibiotic concentrations in ISF that are two- to tenfold lower than plasma concentrations, suggesting that higher plasma concentrations may be required to ensure target concentrations in ISF [11,61,62]. To our knowledge, no studies have adjusted



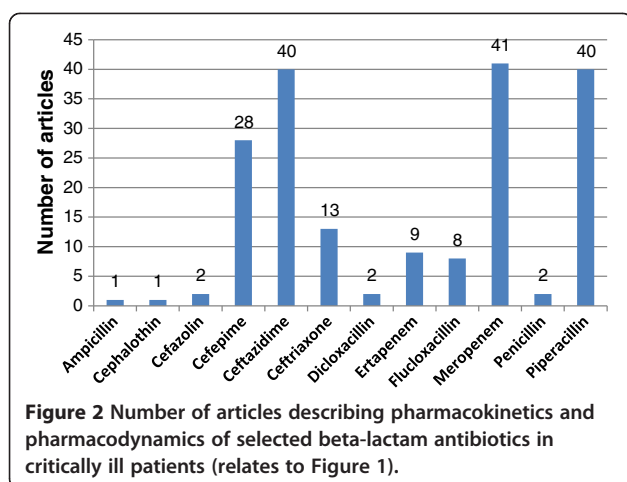
antibiotic doses based on presumed ISF distribution. Problematic to such an approach is that antibiotic concentrations appears to vary between different tissues, suggesting that different plasma target concentrations may be required for the same bacteria depending on the tissue that is the source of infection.

PK alterations in acute kidney injury

Acute kidney injury occurs in approximately 5% of critically ill patients and results in significant PK variability for many beta-lactams. Clearance may be extensively

reduced, leading to both drug accumulation and toxicity [63-65]. In patients receiving continuous renal replacement therapy (CRRT), extracorporeal clearance is significant, yet variable. Efficient clearance of cefepime [66-68], ceftazidime [69,70], meropenem [71-73], and piperacillin [74,75] has been reported. Ceftriaxone clearance also has been shown to be higher than expected [76,77]. In contrast, CRRT clearance for the highly protein-bound flucloracillin is minimal [78,79].

It should be noted, however, that it is difficult to compare the reported PK parameters in CRRT studies due to



the significant heterogeneity in types of membranes used, operational parameters, and modes of dialysis (Table 2). The consequent unreliable beta-lactam dose prediction for individual patients [80,81] is further

compounded by both the limited number of patients studied to date (Table 2) and the fact that different studies cite different PD targets. Finally, the contribution of CRRT to total clearance is variable and dependent on the degree of intrinsic renal function and potential other organ dysfunction [82,83]. As a consequence, there are no definitive dosing guidelines that can be used for all critically ill patients who undergo CRRT. More importantly, some of the current dosing recommendations have been shown to be inadequate, particularly against resistant organisms [69,84], whereas toxicity from unnecessarily high concentrations also has been reported [63-65,82,85].

**Is there a role for beta-lactam TDM in the critically ill?
 Do beta-lactams meet the traditional criteria for requiring TDM?**

Drugs that are traditionally viewed as appropriate candidates for TDM fulfill one or more of the criteria listed in Table 3. Notably, much of the focus of these criteria is

Table 1 Pharmacokinetic parameters of selected beta-lactam antibiotics in critically ill patients without renal dysfunction

Antibiotic	Patients	Dose	Vd (l/kg)	CL (ml/min)	T _{1/2} (h)	C _{max} (mg/ml)	AUC (mg-h/L)	MIC targeted (mg/L)	PD target achieved	Reference
Cefepime	12	2 g q12h	0.34*	123	3.2		346	4	77% T > MIC	[18]
	19	2 g q8h	0.36	88.2*	3.37	68	310	32	34% T > 4xMIC	[20]
	13	2 g q12h	0.32*	134	2.5		249			[33]
	7	2 g q12h	0.47*	125	3.42		305	7 5	80% T > MIC ₉₀ 100% T > MIC ₉₀	[19]
	17	2 g q8h	0.37	88.2*	3.37	66.56	324.02			[34]
Ceftazidime	15	2 g q8h	0.81*	151	4.75		277.31			[21]
	12	2 g q8h	0.27*		3.48	124.4	331	4	92% T > MIC	[35]
	17	2 g q8h	0.51	63.7*	6.28	61.65	523.49			[34]
	18	2 g q8h	0.48	112*	5.84	63	522	32	45% T > 4xMIC	[20]
	10	2 g q8h	0.23	112*	1.98					[36]
	49	2 g q8h or 6 g CI/day	0.67*	91.3						[22]
Meropenem	8	2 g q8h or	0.38*	156.7	2.4	110.1	193.8		100% T > MIC	[37]
	7	2 g LD + 3 g CI/day	0.37*	128.3			117.5		100% T > MIC	
	16	1 g q8h	0.43	130.9*	2.05	35	132	8	57% T > 4xMIC	[20]
	10	1 g q8h or 3 g CI/day	0.32*	226.7						[23]
	10	1 g q8h	0.39*	191	2.13	46.6	99.5	0.25-1	100% T > MIC	[38]
Piperacillin	8	12/1.5 g PIP/TAZ CI	0.33	286.7		144				[24]
	8	4/0.5 PIP/TAZ q6h or q8h				266.6				
	27	4 g q6h	0.38	141.4*	2.58	123	469	64	33% T > 4xMIC	[20]
Ceftriaxone	54	2 g qd	0.28*	14.7	9.6			8	16% T > MIC	[25]
	10	2 g qd	0.28*	41.3	6.4	204.9				[30]
Ertapenem	17	1 g CI/day	0.21*	43.2	4.15	90	418	2	25% T > MIC	[39]
	8	1 g qd	0.85*	200.5	5.7	94.1	317.7			[26]
Flucloxacillin	10		0.29*	150.2	2.45					[27]

Vd, volume of distribution; CL, clearance; C_{max}, peak serum concentration; AUC, area under the concentration vs. time curve; MIC, minimum inhibitory concentration; CI, continuous infusion; LD, loading dose; PIP, piperacillin; TAZ, tazobactam; *Data were converted considering 70 kg body weight.

Table 2 Pharmacokinetic parameters of selected beta-lactam antibiotics in critically ill patients undergoing CRRT

Antibiotic	Patients	Dose	Renal replacement modalities		Pharmacokinetic data										Ref.
			RRT	Dialyzer	Q _B (mL/min)	Q _{UF} (mL/min)	Q _{DF} (mL/h)	C _{max} (mg/L)	t _H (h)	Vd (l/kg)	AUC (mg·h/L)	CL _{tot} (mL/min)	CL _{RRT} (mL/min)	Sc/Sa	
Cefepime	4	2 g q8h	CWH or CVHD	PAN or PS	140-250	16.7-35	500-1000	100.5 l	4.6	0.6		111.5	27.2	0.76	[67]
	5	1-4 g q12h or q24h	CWH	PAN	150	16		44.6 - 94.9	12.9	0.46	834.7 -1,677.8	35.9	13	0.86	[66]
	7	1-4 g q12h or q24h	CWHDF	PAN	150	17	857-1020	25.7 -90.8	8.6	0.34	344.9 -1,306.8	46.8	26	0.78	
	8	2 g q12h	CWH or CWHDF	AN69	150	25.7*	1610*	43	6.17	0.55	379	72.8*			[84]
Ceftazidime	12	2 g q8h	CWH	PS	143	47		58.2	4.3	0.52*	344	98.7	32.1	0.69	[70]
	7	3 g q24h	CWDHF	AN69	150	25	1000		4	0.27*	2514	62	33.6	0.81	[69]
	4	1-2 g q6h	CWH or CWHDF	AN69 or PS	130-140	25	500-1000	53.9-112	6.4	0.67		35.5-333.8	5-65.6	0.93	[82]
	12	2 g q12h	CWH or CWHDF	AN69	150	25.7*	1610*	78	7.74	0.37	536	36.4*			[84]
Meropenem	8	500 mg q12h	CWH	AN69	10	26.7		39.5	3.63		105.3	82.94	24.42	0.91	[71]
	5	1 g q12h	CWH	AN69	150	16.7-33.3			5.16	0.39*	246	4.3	1.96	0.93	[86]
	5	1 g q12h	CWDHF	AN69	150	16.7 - 25	1000-1500								
	10	1 g q8h	High volume CWH	AN69	250	66.7-100		56.6	4.3	0.2	166.5	100	58.3	0.93	[72]
	15	0.5-1 g q8h or q12h	CWHDF	AN 69	90-150	0.17-4.5	600-1500		5.1	0.47*		75	26.7	0.65	[87]
	5	0.5 g q12h	CWH	PAN	200	25-30		24.5	6.37	0.37	129.5	4.57	1.03	0.63	[88]
	9	0.5 g q8h or q12h	CWH	AN69	150-170	1.7-2.5		38.9	8.7	0.17*		52	22	1.17	[72]
	9	1 g Stat	CWH	PS	150	45.8		28.1		0.37*	118	143.7	49.7	0.24	[89]
Piperacillin/ tazobactam	6	4 g q12h/0.5 g q12h	CWH	PS	100	13.3			7.7/13.9			64.8/40.3			[90]
			CWHDF					1000	6.7/11.6			84.3/52.2			
								2000	6.1/9.4			91.3/62.5			
8	2 g/0.25 g or 4 g/0.5 g	CWHD	AN69	150	1.3-3.3	1500		4.3/5.6	0.31/0.24		47/29.5	22/17	0.87/0.64	[91]	
Ceftriaxone	6	2-4 g q24h	CWH	PA	100-150	20-30			10.8	0.45*			16.6	0.69	[77]
Flucloxacillin	10	4 g q8h	CWH	PA	169	57		139.1-179.7	4.9	0.69*	568	117.2		0.21	[79]

Q_B, blood flow rate; Q_{UF}, ultrafiltration rate; Q_{DF}, dialysate flow rate; RRT, renal replacement therapy; Sc, sieving coefficient; Sa, saturation coefficient; Vd, volume of distribution; CL, clearance; C_{max}, peak serum concentration; t_H, half-life; AUC, area under the concentration vs time curve; CVH, continuous venovenous hemofiltration; CVHD, continuous venovenous hemodialysis; CVHDF, continuous venovenous hemodiafiltration; PAN, polyacrylonitrile; PS, polysulfone; PA, polyamide; *Data were converted considering 70 kg body weight.

Table 3 Characteristics of drugs traditionally considered to require TDM [92,93]

No.	Criteria
1	Narrow therapeutic range/index
2	Drug toxicity may lead to hospitalization, irreversible organ damage, and even death
3	No clearly defined clinical parameter that allows dose adjustments
4	Correlation exists between serum concentration and efficacy as well as toxicity
5	Unpredictable relationship between dose and clinical outcome
6	Difficult to predict pharmacokinetics (e.g. non-linear pharmacokinetics)

on the prevention of drug toxicity. For many drugs that fulfill the first of these criteria, a *narrow therapeutic index* (e.g., aminoglycosides), TDM is commonly performed. For drugs with a wider therapeutic index, including beta-lactams, TDM has previously been considered to be less clinically relevant because of a lower risk of toxicity. However, TDM may be used, not only to minimize toxicity but also to maximize efficacy [92]. In fact, the primary goal of TDM may be to optimize the clinical response to treatment, with a secondary goal being avoidance of adverse effects.

Further rationale for measuring therapeutic beta-lactam concentrations relates to the absence of a “*clearly defined clinical parameter that allows dose adjustments*” (criterion 3). For conventional drugs that are subjected to TDM, such as aminoglycosides, it is difficult to monitor toxicity clinically unless drug levels are monitored, because endpoints for toxicity are poorly defined [92]. Similarly, for beta-lactam antibiotic therapy, there is no established or uniform clinical endpoint that reliably describes resolution of infection and, therefore, adequate dosing. Confirmation of dosing appropriateness using antibiotic concentrations is therefore potentially useful.

The “*relationship between dose and clinical outcome*” for beta-lactams also is unpredictable (criterion 5) due to the variability in clinical response both between and within patients from one dose to the next. A beta-lactam dose that produces a therapeutic effect in one patient may produce toxicity or no clinical response in another patient most probably because of differences in drug distribution into different physiological compartments. Although the PK of beta-lactams in the noncritically ill is generally predictable, the rapidly changing acute pathophysiology and organ dysfunction that occurs in the critically ill means that any assumptions about drug concentrations are unreliable and dose-effect relationships are unpredictable.

Finally, even though “*non-linear PK*” (criterion 6) is not common for beta-lactams, drug accumulation and

toxicity can occur due to renal impairment. For example, the accumulation of cefepime in critically ill patients with acute renal failure has been reported to lead to neurotoxicity [63-65,94]. Furthermore, attempts to prevent such toxicity by using standard dose adjustment algorithms [49] have been shown to be unsuccessful. For piperacillin also, similar toxicities have been reported in advanced renal failure at doses conventionally recommended for patients with renal impairment [95,96]. Compressive reviews of neurotoxicity by beta-lactam antibiotics have been published [85,94,97] and emphasize the need for vigilant monitoring.

Studies assessing beta-lactam TDM in a clinical environment

Although TDM of beta-lactam antibiotics in the critically ill patient population has previously been called for [27,34,49,91,98], to date, only a few studies describing its utility have been performed [16,45,99-102]. Roberts et al. prospectively evaluated TDM in 236 ICU patients and reported that beta-lactam dose adjustment was necessary for 74.2% of patients; 50.4% of the total patients required a dose increment after the first measurement. Their limited outcome findings indicate success rate of 87.3% antibiotic course completion. More recently, the clinical utility of beta-lactam TDM was prospectively examined in a cohort of 50 burn injury patients in a ward environment. For 60% of patients, trough concentrations were less than the target MIC and dose adjustment was required. For patients achieving therapeutic targets, a statistically significant shorter duration of antibiotic therapy was described, thereby demonstrating the therapeutic utility of a TDM program [103].

A prospective study by Aubert et al. [45] assessed serum ceftazidime concentrations in 92 ICU patients. The authors reported that 37% of patients had inadequate ceftazidime concentrations and 27% had excessive concentrations. Ceftazidime dosage was adjusted accordingly to ensure therapeutic concentrations. Connor et al. [104] reported a novel approach for measuring piperacillin-tazobactam drug levels in patients receiving continuous veno-venous hemodialysis (CVVHD) whereby CVVHD effluent was assayed to provide an estimation of plasma drug concentrations for TDM. A piperacillin TDM program in ICU patients using plasma drug concentrations also has been evaluated by Blondiaux et al. [100]. The authors reported that 50% of patients had plasma piperacillin concentrations within the therapeutic target range after continuous infusion of the initial dose and before TDM. Subsequent TDM-guided dose adjustment increased this proportion to 75%.

For meropenem, Taccone et al. [102] recently demonstrated that TDM-guided dose optimization resulted in a

successful resolution of sepsis in a patient with extensively drug-resistant *Pseudomonas aeruginosa*. Interestingly, the study demonstrates a rapid emergence of extensively resistant strains most probably due to subinhibitory exposure arising from commonly used dose of 1 g q8h followed by 2 g q8h (MIC was 2 mg/L on day 1, 4 mg/L on day 6, and 8 mg/L a few days later). The investigators performed TDM less frequently (initially on days 2 and 5 of treatment) and were not able to adjust doses early enough to prevent the emergence of resistance and/or therapeutic failure. Their observation, however, presents a novel evidence to suggest frequent TDM: perhaps daily and certainly in the earlier phase of treatment. A case report by Pea et al. [101] also described an intensive TDM process for meropenem and daptomycin.

In summary, the available evidence supporting a beneficial role for beta-lactam TDM in the critically ill is limited. The benefits of TDM may be most evident in patients with severe sepsis as well as in infections with organisms having high MIC. Whether or not TDM-driven dose optimization results in improved clinical outcomes, awaits evidence from a randomized, controlled, clinical trial. It also should be noted that the specified PK/PD target has varied between studies performed to date and to ensure the maximal benefit of TDM an understanding of the appropriate PK/PD targets is essential.

Is there a defined PD target for beta-lactam TDM?

For beta-lactams, the best index that describes efficacy is the time the free drug concentration remains above MIC ($fT_{>MIC}$) [105]. However, the optimal $fT_{>MIC}$ is controversial.

Animal studies suggest that maximal effects can be achieved when $fT_{>MIC}$ is less than 100% of the dosing interval, depending on the antibiotic and the organism targeted [51,53,105]. In several studies of cephalosporins, 60–70% $fT_{>MIC}$ against *Enterobacteriaceae* and 40–50% $fT_{>MIC}$ against *Staphylococcus aureus* have been reported to produce maximal effect [105]. Earlier animal studies also have indicated that *Staphylococci* have maximum killing at 50–60% $fT_{>MIC}$, whereas 90–100% $fT_{>MIC}$ are required for Gram-negative *Bacilli* and *Streptococci*, presumably due to the absence of a postantibiotic effect [51,53]. For carbapenems, which have relatively high postantibiotic effect, bacteriostatic activity is achieved at 20% $fT_{>MIC}$ and bactericidal effects are observed at 40% $fT_{>MIC}$ [106].

Mouton et al. [107] reported in a dynamic *in vitro* model that maintaining ceftazidime concentration around or slightly above the MIC is not sufficient enough to ensure prolonged efficacy and that targeting $fT_{>4xMIC}$ provided sustained and better effect. For

meropenem, beneficial outcomes have been observed when the target $fT_{>4-5xMIC}$ is maintained [73]. Finally, Tam et al. [108] reported that exposure to 6xMIC is necessary for meropenem to suppress resistance emergence against *P. aeruginosa*.

In patients, TDM using either 100% $fT_{>MIC}$ [103] or 100% $fT_{>4-5xMIC}$ [45,99,100,102,103] for several beta-lactams has previously been reported. More recently, 54% $fT_{>MIC}$ for meropenem has been reported as significant predictor of response in patients with pneumonia [5]. This, and similar studies [7,102,109], suggest that a higher duration of beta-lactam exposure may be required for optimal clinical outcomes than that reported in animal studies. Indeed, this higher exposure may relate to impaired distribution of antibiotic into ISF meaning that a higher plasma exposure is required to achieve an ISF exposure that is equivalent to the animal *in vivo* targets.

Given that many factors can affect the likelihood of a positive outcome in the critically ill, beta-lactam treatment should aim to attain the maximum exposure [79]. Targeting trough concentration (4–5xMIC) may decrease the likelihood of suboptimal plasma concentrations. The higher concentration would enable enhanced distribution of drug into tissues with deranged microcirculation (e.g., septic shock) and improve impaired tissue beta-lactam penetration [11,61,62]. In the absence of well-conducted, prospective, clinical trials addressing the therapeutic benefit of currently recommended PD targets, 100% $fT_{>MIC}$ could be considered a prudent PD target for beta-lactams in the critically ill; albeit noncritically ill patients may only require minimal exposures of 40–70% $fT_{>MIC}$.

Predicting MIC for TDM

The MIC of a target organism(s) is usually not available upon initiation of therapy and may not become available for 24–72 hours after specimens have been sent to a microbiology laboratory. For this reason, epidemiological data of MICs for pathogens can be useful, although there may be considerable variability in the susceptibility of organisms between different institutions within the same geographic location. In cases when the causative organism has been isolated, MIC for the TDM target could be determined by *in vitro* tests, such as the E-test [102]. If these data are not available, an antibiogram for the local institution should be used. Alternatively national guidelines, such as that produced by The French Microbiology Society's Antibiotics Committee [100], or other databases, such as The European Committee on Antimicrobial Susceptibility Testing (EUCAST), may be highly useful [45,99,101,103].

In cases in which no organisms are isolated, the susceptibility break point of the least susceptible potential

pathogen should be used [99,103]. For example, if *P. aeruginosa* and *K. pneumoniae* are the most common causes of pneumonias in an ICU, and piperacillin/tazobactam is the preferred empiric therapy, the TDM that targets the *P. aeruginosa* MIC (16 mg/L *P. aeruginosa* vs. 8 mg/L *K. pneumoniae*) would be appropriate. Later, dose adjustment could be based on the identified pathogen and associated MIC.

Beta-lactam assay for use in a TDM program

High performance liquid chromatography (HPLC) is the most common assay technique used in studies of beta-lactam TDM [16,45,99-102]. Verdier et al. [110] developed an HPLC assay method specifically targeting the needs of routine TDM application, thus enabling simultaneous determination of 12 beta-lactams within 22 minutes. Another robust HPLC method described by McWhinney et al. [111] analyzed 12 antibiotics simultaneously within a 7-minute run time. HPLC is, however, a relatively slow technique that requires extensive sample preparation and clean-up processes and, thus, is not suitable for urgent assay needs [112,113]. The relative cost and requirement of specialized instrumentation also is another drawback compared with other techniques, such as immunochemical assays, which use cheaper, portable, and easy-to-use instrumentations [114]. Immunochemical assays have been used for other antibiotics for which routine TDM is well established, such as aminoglycosides and vancomycin [115,116]. However, the development of such techniques for beta-lactams has been a challenge [117,118]. To date, no technique allows simple and rapid determination of unbound beta-lactam plasma concentration, which is ideally required for TDM.

Conclusions

There is enormous PK variability of beta-lactam antibiotics in critically ill patients. The majority of evidence suggests that empiric approaches to antibiotic dosing may result in subtherapeutic antibiotic concentrations and treatment failure or the emergence of antibiotic resistance. The available studies also strongly support the need for individualized dose optimization in the critically ill, which supports the need for TDM. Despite the theoretical advantages, there remains no consistent use of agreed PK/PD targets. Furthermore, none of the studies have defined the impact of TDM on clinical outcome.

Abbreviations

ARC: augmented renal clearance; CRRT: continuous renal replacement therapy; CVHD: continuous veno-venous hemodialysis; $fT_{>MIC}$: time the free drug concentration is greater than MIC; $fT_{>4 \times MIC}$: time the free drug concentration is greater than four times MIC; $fT_{>4-5 \times MIC}$: time the free drug concentration is greater than four to five times MIC; ISF: interstitial fluid; MIC: minimum inhibitory concentration; PD: pharmacodynamic; PK: pharmacokinetic; PK/PD: pharmacokinetics and pharmacodynamics; TDM: therapeutic drug monitoring.

Competing interests

All authors declare that they have no competing interests.

Authors' contributions

All authors contributed to drafting of the manuscript and approved the final version.

Author details

¹School of Pharmacy and Medical Sciences, University of South Australia, Adelaide, Australia. ²Therapeutics Research Centre, Basil Hetzel Institute for Translational Health Research, The Queen Elizabeth Hospital, Adelaide, Australia. ³Therapeutics Research Centre, School of Medicine, The University of Queensland, Brisbane, Australia. ⁴Department of Intensive Care Medicine, The Queen Elizabeth Hospital, Adelaide, Australia. ⁵Burns, Trauma, and Critical Care Research Centre, The University of Queensland, Herston, Brisbane, QLD, Australia. ⁶Department of Intensive Care Medicine, Royal Brisbane and Women's Hospital, Herston, Brisbane, QLD, Australia. ⁷Pharmacy Department, Royal Brisbane and Women's Hospital, Herston, Brisbane, QLD, Australia.

Received: 7 June 2012 Accepted: 28 June 2012

Published: 28 July 2012

References

1. Roberts JA, Norris R, Paterson DL, Martin JH: Therapeutic drug monitoring of antimicrobials. *Br J Clin Pharmacol* 2012, **73**:27-36.
2. Ariano RE, Nyhlen A, Mathot RA, Geus WP, van Hout BA, Vinks AA: Impact of goal-oriented and model-based clinical pharmacokinetic dosing of aminoglycosides on clinical outcome: a cost-effectiveness analysis. *Ther Drug Monit* 1999, **21**:63-73.
3. Moise-Broder PA, Forrest A, Birmingham MC, Schentag JJ: Pharmacodynamics of vancomycin and other antimicrobials in patients with *Staphylococcus aureus* lower respiratory tract infections. *Clin Pharmacokinet* 2004, **43**:925-942.
4. Ariano RE, Nyhlen A, Donnelly JP, Sitar DS, Harding GK, Zelenitsky SA: Pharmacokinetics and pharmacodynamics of meropenem in febrile neutropenic patients with bacteremia. *Ann Pharmacother* 2005, **39**:32-38.
5. Li C, Du X, Kuti JL, Nicolau DP: Clinical pharmacodynamics of meropenem in patients with lower respiratory tract infections. *Antimicrob Agents Chemother* 2007, **51**:1725-1730.
6. Lodise TP Jr, Lomaestro B, Drusano GL: Piperacillin-tazobactam for *Pseudomonas aeruginosa* infection: clinical implications of an extended-infusion dosing strategy. *Clin Infect Dis* 2007, **44**:357-363.
7. McKinnon PS, Paladino JA, Schentag JJ: Evaluation of area under the inhibitory curve (AUC) and time above the minimum inhibitory concentration ($T > MIC$) as predictors of outcome for cefepime and ceftazidime in serious bacterial infections. *Int J Antimicrob Ag* 2008, **31**:345-351.
8. Niemiec PW Jr, Allo MD, Miller CF: Effect of altered volume of distribution on aminoglycoside levels in patients in surgical intensive care. *Arch Surg* 1987, **122**:207-212.
9. Dorman T, Swoboda S, Zarfeshanfard F, Trentler B, Lipsett PA: Impact of altered aminoglycoside volume of distribution on the adequacy of a three milligram per kilogram loading dose. *Critical Care Research Group. Surgery* 1998, **124**:73-78.
10. Roos JF, Lipman J, Kirkpatrick CM: Population pharmacokinetics and pharmacodynamics of ceftazidime in critically ill patients against Gram-negative bacteria. *Intensive Care Med* 2007, **33**:781-788.
11. Joukhadar C, Frossard M, Mayer BX, Brunner M, Klein N, Siostrzonek P, Eichler HG, Muller M: Impaired target site penetration of beta-lactams may account for therapeutic failure in patients with septic shock. *Crit Care Med* 2001, **29**:385-391.
12. Erlandsson M, Burman LG, Cars O, Gill H, Nilsson LE, Walther SM, Hanberger H: Prescription of antibiotic agents in Swedish intensive care units is empiric and precise. *Scand J Infect Dis* 2007, **39**:63-69.
13. Roberts JA: Using PK/PD to optimize antibiotic dosing for critically ill patients. *Curr Pharmaceut Biotechnol* 2011, **12**:2070-2079.
14. Mohr JF, Wanger A, Rex JH: Pharmacokinetic/pharmacodynamic modeling can help guide targeted antimicrobial therapy for nosocomial gram-negative infections in critically ill patients. *Diagn Micr Infect Dis* 2004, **48**:125-130.

15. Goncalves-Pereira J, Povoas P: **Antibiotics in critically ill patients - a systematic review of the pharmacokinetics of beta-Lactams.** *Crit Care* 2011, **15**:R206.
16. Scaglione F: **Can PK/PD be used in everyday clinical practice.** *Int J Antimicrob Ag* 2002, **19**:349-353.
17. Roberts JA, Hope WW, Lipman J: **Therapeutic drug monitoring of beta-lactams for critically ill patients: unwarranted or essential?** *Int J Antimicrob Agents* 2010, **35**:419-420.
18. Lipman J, Wallis SC, Boots RJ: **Cefepime versus ceftiprome: the importance of creatinine clearance.** *Anesth Analg* 2003, **97**:1149-1154.
19. Kieft H, Hoepelman AI, Knupp CA, van Dijk A, Branger JM, Struyvenberg A, Verhoef J: **Pharmacokinetics of cefepime in patients with the sepsis syndrome.** *J Antimicrob Chemother* 1993, **32**(Suppl B):117-122.
20. Taccone FS, Laterre P-F, Dugernier T, Spapen H, Delattre I, Wittebole X, De Backer D, Layeux B, Wallemacq P, Vincent J-L, Jacobs F: **Insufficient beta-lactam concentrations in the early phase of severe sepsis and septic shock.** *Crit Care* 2010, **14**:R126.
21. Gomez CM, Cordingley JJ, Palazzo MG: **Altered pharmacokinetics of ceftazidime in critically ill patients.** *Antimicrob Agents Chemother* 1999, **43**:1798-1802.
22. Georges B, Conil J-M, Seguin T, Ruiz S, Minville V, Cougot P, Decun J-F, Gonzalez H, Houin G, Fourcade O, Saivin S: **Population pharmacokinetics of ceftazidime in intensive care unit patients: influence of glomerular filtration rate, mechanical ventilation, and reason for admission.** *Antimicrob Agents Chemother* 2009, **53**:4483-4489.
23. Douglas A, Udy AA, Wallis SC, Jarrett P, Stuart J, Lassig-Smith M, Deans R, Roberts MS, Taraporewalla K, Jenkins J, Medley G, Lipman J, Roberts JA: **Plasma and tissue pharmacokinetics of ceftazidime in patients undergoing elective and semi-elective abdominal aortic aneurysm open repair surgery.** *Antimicrob Agents Chemother* 2011, **55**:5238-5242.
24. Roberts JA, Kirkpatrick CMJ, Roberts MS, Dalley AJ, Lipman J: **First-dose and steady-state population pharmacokinetics and pharmacodynamics of piperacillin by continuous or intermittent dosing in critically ill patients with sepsis.** *Int J Antimicrob Ag* 2010, **35**:156-163.
25. Garot D, Respaud R, Lanotte P, Simon N, Mercier E, Ehrmann S, Perrotin D, Dequin PF, Le Guellec C: **Population pharmacokinetics of ceftriaxone in critically ill septic patients: a reappraisal.** *Br J Clin Pharmacol* 2011, **72**:758-767.
26. Brink AJ, Richards GA, Schillack V, Kiem S, Schentag J: **Pharmacokinetics of once-daily dosing of ertapenem in critically ill patients with severe sepsis.** *Int J Antimicrob Ag* 2009, **33**:432-436.
27. Uildemolins M, Roberts JA, Wallis SC, Rello J, Lipman J: **Flucloxacillin dosing in critically ill patients with hypoalbuminaemia: special emphasis on unbound pharmacokinetics.** *J Antimicrob Chemother* 2010, **65**:1771-1778.
28. Van Dalen R, Vree TB, Baars IM: **Influence of protein binding and severity of illness on renal elimination of four cephalosporin drugs in intensive-care patients.** *Pharm Weekbl Sci* 1987, **9**:98-103.
29. Moon YS, Chung KC, Gill MA: **Pharmacokinetics of meropenem in animals, healthy volunteers, and patients.** *Clin Infect Dis* 1997, **24**(Suppl 2):S249-S255.
30. Joynt GM, Lipman J, Gomersall CD, Young RJ, Wong EL, Gin T: **The pharmacokinetics of once-daily dosing of ceftazidime in critically ill patients.** *J Antimicrob Chemother* 2001, **47**:421-429.
31. Udy AA, Putt MT, Shanmugathasan S, Roberts JA, Lipman J: **Augmented renal clearance in the Intensive Care Unit: an illustrative case series.** *Int J Antimicrob Ag* 2010, **35**:606-608.
32. Burkhardt O, Kumar V, Katterwe D, Majcher-Peszynska J, Drewelow B, Derendorf H, Welte T: **Ertapenem in critically ill patients with early-onset ventilator-associated pneumonia: pharmacokinetics with special consideration of free-drug concentration.** *J Antimicrob Chemother* 2007, **59**:277-284.
33. Lipman J, Wallis SC, Rickard C: **Low plasma cefepime levels in critically ill septic patients: pharmacokinetic modeling indicates improved troughs with revised dosing.** *Antimicrob Agents Chemother* 1999, **43**:2559-2561.
34. Delattre IK, Musumba FT, Verbeeck RK, Dugernier T, Spapen H, Laterre P-F, Wittebole X, Cumps J, Taccone FS, Vincent J-L, Jacobs F, Wallemacq PE: **Empirical models for dosage optimization of four beta-lactams in critically ill septic patients based on therapeutic drug monitoring of amikacin.** *Clin Biochem* 2010, **43**:589-598.
35. Benko AS, Cappelletty DM, Kruse JA, Rybak MJ: **Continuous infusion versus intermittent administration of ceftazidime in critically ill patients with suspected gram-negative infections.** *Antimicrob Agents Chemother* 1996, **40**:691-695.
36. Young RJ, Lipman J, Gin T, Gomersall CD, Joynt GM, Oh TE: **Intermittent bolus dosing of ceftazidime in critically ill patients.** *J Antimicrob Chemother* 1997, **40**:269-273.
37. Thalhammer F, Traunmuller F, El Menyawi I, Frass M, Hollenstein UM, Locker GJ, Stoiser B, Staudinger T, Thalhammer-Scherrer R, Burgmann H: **Continuous infusion versus intermittent administration of meropenem in critically ill patients.** *J Antimicrob Chemother* 1999, **43**:523-527.
38. Novelli A, Adembri C, Livi P, Fallani S, Mazzei T, De Gaudio AR: **Pharmacokinetic evaluation of meropenem and imipenem in critically ill patients with sepsis.** *Clin Pharmacokinet* 2005, **44**:539-549.
39. Burkhardt O, Derendorf H, Welte T: **Ertapenem: the new carbapenem 5 years after first FDA licensing for clinical practice.** *Expert Opin Pharmacother* 2007, **8**:237-256.
40. Boselli E, Breilh D, Saux M-C, Gordien J-B, Allaouchiche B: **Pharmacokinetics and lung concentrations of ertapenem in patients with ventilator-associated pneumonia.** *Intens Care Med* 2006, **32**:2059-2062.
41. Burgess DS, Frei CR: **Comparison of beta-lactam regimens for the treatment of gram-negative pulmonary infections in the intensive care unit based on pharmacokinetics/pharmacodynamics.** *J Antimicrob Chemother* 2005, **56**:893-898.
42. Tam VH, Louie A, Lomaestro BM, Drusano GL: **Integration of population pharmacokinetics, a pharmacodynamic target, and microbiologic surveillance data to generate a rational empiric dosing strategy for ceftazidime against *Pseudomonas aeruginosa*.** *Pharmacotherapy* 2003, **23**:291-295.
43. DeRyke CA, Kuti JL, Nicolau DP: **Pharmacodynamic target attainment of six beta-lactams and two fluoroquinolones against *Pseudomonas aeruginosa*, *Acinetobacter baumannii*, *Escherichia coli*, and *Klebsiella* species collected from United States intensive care units in 2004.** *Pharmacotherapy* 2007, **27**:333-342.
44. Zelenitsky SA, Ariano RE, Zhanel GG: **Pharmacodynamics of empirical antibiotic monotherapies for an intensive care unit (ICU) population based on Canadian surveillance data.** *J Antimicrob Chemother* 2011, **66**:343-349.
45. Aubert G, Carricajo A, Coudrot M, Guyomar'h S, Auboyer C, Zeni F: **Prospective determination of serum ceftazidime concentrations in intensive care units.** *Ther Drug Monit* 2010, **32**:517-519.
46. Hallam MJ, Allen JM, James SE, Donaldson PMW, Davies JG, Hanlon GW, Dheansa BS: **Potential subtherapeutic linezolid and meropenem antibiotic concentrations in a patient with severe burns and sepsis.** *J Burn Care Res* 2010, **31**:207-209.
47. Burkhardt O, Kumar V, Schmidt S, Kielstein JT, Welte T, Derendorf H: **Underdosing of ertapenem in critically ill patients with pneumonia confirmed by Monte Carlo simulations.** *Int J Antimicrob Agents* 2010, **35**:96-97.
48. Boyadjiev I, Boulamery A, Simon N, Martin C, Bruguerolle B, Leone M: **Penetration of Ertapenem into Muscle Measured by In Vivo Microdialysis in Mechanically Ventilated Patients.** *Antimicrob Agents Ch* 2011, **55**:3573-3575.
49. Chapuis TM, Giannoni E, Majcherczyk PA, Chiolerio R, Schaller M-D, Berger MM, Bolay S, Decosterd LA, Bugnon D, Moreillon P: **Prospective monitoring of cefepime in intensive care unit adult patients.** *Crit Care* 2010, **14**:R51.
50. Kiffer CRV, Kuti JL, Mendes CMF, Oplustil CP, Amarante JB, Biancalana ML, Xavier N, Nicolau DP: **A pharmacodynamic strategy to optimize empirical antibiotic therapy for gram-negative bacteria in a Brazilian Intensive Care Unit.** *Braz J Infect Dis* 2007, **11**:183-185.
51. Craig WA: **Pharmacokinetic/pharmacodynamic parameters: rationale for antibacterial dosing of mice and men.** *Clin Infect Dis* 1998, **26**:1-10. quiz 11-12.
52. Vogelman B, Gudmundsson S, Leggett J, Turnidge J, Ebert S, Craig WA: **Correlation of Antimicrobial Pharmacokinetic Parameters with Therapeutic Efficacy in an Animal Model.** *J Infect Dis* 1988, **158**:831-847.
53. Turnidge JD: **The pharmacodynamics of beta-lactams.** *Clin Infect Dis* 1998, **27**:10-22.
54. Alou L, Aguilar L, Sevillano D, Gimenez M-J, Echeverria O, Gomez-Lus M-L, Prieto J: **Is there a pharmacodynamic need for the use of continuous versus intermittent infusion with ceftazidime against *Pseudomonas aeruginosa*? An in vitro pharmacodynamic model.** *J Antimicrob Chemother* 2005, **55**:209-213.

55. Buijk SLCE, Gyssens IC, Mouton JW, Van Vliet A, Verbrugh HA, Bruining HA: **Pharmacokinetics of ceftazidime in serum and peritoneal exudate during continuous versus intermittent administration to patients with severe intra-abdominal infections.** *J Antimicrob Chemother* 2002, **49**:121–128.
56. Lipman J, Gomersall CD, Gin T, Joynt GM, Young RJ: **Continuous infusion ceftazidime in intensive care: a randomized controlled trial.** *J Antimicrob Chemother* 1999, **43**:309–311.
57. Nicolau DP, Lacy MK, McNabb JC, Quintiliani R, Nightingale CH: **Pharmacokinetics of continuous and intermittent ceftazidime in intensive care unit patients with nosocomial pneumonia.** *Infect Dis Clin Pract* 1999, **8**:45–49.
58. Nicolau DP, McNabb J, Lacy MK, Quintiliani R, Nightingale CH: **Continuous versus intermittent administration of ceftazidime in intensive care unit patients with nosocomial pneumonia.** *Int J Antimicrob Ag* 2001, **17**:497–504.
59. Nicolau DP, McNabb JC, Lacy MK, Li J, Quintiliani R, Nightingale CH: **Pharmacokinetics and pharmacodynamics of continuous and intermittent ceftazidime during the treatment of nosocomial pneumonia.** *Clin Drug Invest* 1999, **18**:133–139.
60. Roberts JA, Webb S, Paterson D, Ho KM, Lipman J: **A systematic review on clinical benefits of continuous administration of beta-lactam antibiotics.** *Crit Care Med* 2009, **37**:2071–2078.
61. Roberts JA, Roberts MS, Robertson TA, Dalley AJ, Lipman J: **Piperacillin penetration into tissue of critically ill patients with sepsis—bolus versus continuous administration?** *Crit Care Med* 2009, **37**:926–933.
62. Roberts JA, Kirkpatrick CMJ, Roberts MS, Robertson TA, Dalley AJ, Lipman J: **Meropenem dosing in critically ill patients with sepsis and without renal dysfunction: intermittent bolus versus continuous administration? Monte Carlo dosing simulations and subcutaneous tissue distribution.** *J Antimicrob Chemother* 2009, **64**:142–150.
63. Abanades S, Nolla J, Rodriguez-Campello A, Pedro C, Valls A, Farre M: **Reversible coma secondary to cefepime neurotoxicity.** *Ann Pharmacother* 2004, **38**:606–608.
64. Bresson J, Paugam-Burtz C, Jossierand J, Bardin C, Mantz J, Pease S: **Cefepime overdosage with neurotoxicity recovered by high-volume haemofiltration.** *J Antimicrob Chemother* 2008, **62**:849–850.
65. Dakdouki GK, Al-Awar GN: **Cefepime-induced encephalopathy.** *Int J Infect Dis* 2004, **8**:59–61.
66. Malone RS, Fish DN, Abraham E, Teitelbaum I: **Pharmacokinetics of cefepime during continuous renal replacement therapy in critically ill patients.** *Antimicrob Agents Chemother* 2001, **45**:3148–3155.
67. Isla A, Gascon AR, Maynar J, Arzuaga A, Toral D, Pedraz JL: **Cefepime and continuous renal replacement therapy (CRRT): in vitro permeability of two CRRT membranes and pharmacokinetics in four critically ill patients.** *Clin Ther* 2005, **27**:599–608.
68. Allaouchiche B, Breilh D, Jaumain H, Gaillard B, Renard S, Saux MC: **Pharmacokinetics of cefepime during continuous venovenous hemodiafiltration.** *Antimicrob Agents Chemother* 1997, **41**:2424–2427.
69. Mariat C, Venet C, Jehl F, Mwewa S, Lazarevic V, Diconne E, Fonsale N, Carricajo A, Guyomarc'h S, Vermesch R, Aubert G, Bidault R, Bertrand J-C, Zeni F: **Continuous infusion of ceftazidime in critically ill patients undergoing continuous venovenous haemodiafiltration: pharmacokinetic evaluation and dose recommendation.** *Crit Care* 2006, **10**:R26.
70. Traunmuller F, Schenk P, Mittermeyer C, Thalhammer-Scherrer R, Ratheiser K, Thalhammer F: **Clearance of ceftazidime during continuous venovenous haemofiltration in critically ill patients.** *J Antimicrob Chemother* 2002, **49**:129–134.
71. Krueger WA, Neeser G, Schuster H, Schroeder TH, Hoffmann E, Heining A, Dieterich H-J, Forst H, Unertl KE: **Correlation of meropenem plasma levels with pharmacodynamic requirements in critically ill patients receiving continuous veno-venous hemofiltration.** *Chemotherapy* 2003, **49**:280–286.
72. Tegeder I, Neumann F, Bremer F, Brune K, Lotsch J, Geisslinger G: **Pharmacokinetics of meropenem in critically ill patients with acute renal failure undergoing continuous venovenous hemofiltration.** *Clin Pharmacol Ther* 1999, **65**:50–57.
73. Bilgrami I, Roberts JA, Wallis SC, Thomas J, Davis J, Fowler S, Goldrick PB, Lipman J: **Meropenem dosing in critically ill patients with sepsis receiving high-volume continuous venovenous hemofiltration.** *Antimicrob Agents Chemother* 2010, **54**:2974–2978.
74. Keller E, Bohler J, Busse-Grawitz A, Reetze-Bonorden P, Krumme B, Schollmeyer P: **Single dose kinetics of piperacillin during continuous arteriovenous hemodialysis in intensive care patients.** *Clin Nephrol* 1995, **43**(Suppl 1):S20–S23.
75. Arzuaga A, Maynar J, Gascon AR, Isla A, Corral E, Fonseca F, Sanchez-Izquierdo JA, Rello J, Canut A, Pedraz JL: **Influence of renal function on the pharmacokinetics of piperacillin/tazobactam in intensive care unit patients during continuous venovenous hemofiltration.** *J Clin Pharmacol* 2005, **45**:168–176.
76. Matzke GR, Frye RF, Joy MS, Palevsky PM: **Determinants of ceftriaxone clearance by continuous venovenous hemofiltration and hemodialysis.** *Pharmacotherapy* 2000, **20**:635–643.
77. Kroh UF, Lennartz H, Edwards DJ, Stoeckel K: **Pharmacokinetics of ceftriaxone in patients undergoing continuous veno-venous hemofiltration.** *J Clin Pharmacol* 1996, **36**:1114–1119.
78. Bouman CSC, van Kan HJM, Koopmans RP, Korevaar JC, Schultz MJ, Vroom MB: **Discrepancies between observed and predicted continuous venovenous hemofiltration removal of antimicrobial agents in critically ill patients and the effects on dosing.** *Intens Care Med* 2006, **32**:2013–2019.
79. Meyer B, el GS A, Delle KG, Locker GJ, Heinz G, Jaeger W, Thalhammer F: **How to calculate clearance of highly protein-bound drugs during continuous venovenous hemofiltration demonstrated with flucloxacillin.** *Kidney Blood Press Res* 2003, **26**:135–140.
80. Choi G, Gomersall CD, Tian Q, Joynt GM, Freebairn R, Lipman J: **Principles of antibacterial dosing in continuous renal replacement therapy.** *Crit Care Med* 2009, **37**:2268–2282.
81. Schetz M, Ferdinande P, Van den Berghe G, Verwaest C, Lauwers P: **Pharmacokinetics of continuous renal replacement therapy.** *Intensive Care Med* 1995, **21**:612–620.
82. Isla A, Gascon AR, Maynar J, Arzuaga A, Sanchez-Izquierdo JA, Pedraz JL: **In vitro AN69 and polysulphone membrane permeability to ceftazidime and in vivo pharmacokinetics during continuous renal replacement therapies.** *Chemotherapy* 2007, **53**:194–201.
83. Isla A, Maynar J, Sanchez-Izquierdo JA, Gascon AR, Arzuaga A, Corral E, Pedraz JL: **Meropenem and continuous renal replacement therapy: in vitro permeability of 2 continuous renal replacement therapy membranes and influence of patient renal function on the pharmacokinetics in critically ill patients.** *J Clin Pharmacol* 2005, **45**:1294–1304.
84. Seyler L, Cotton F, Taccone FS, De Backer D, Macours P, Vincent JL, Jacobs F: **Recommended beta-lactam regimens are inadequate in septic patients treated with continuous renal replacement therapy.** *Crit Care* 2011, **15**:R137.
85. Grill MF, Maganti RK: **Neurotoxic effects associated with antibiotic use: management considerations.** *Brit J Clin Pharmacol* 2011, **72**:381–393.
86. Giles LJ, Jennings AC, Thomson AH, Creed G, Beale RJ, McLuckie A: **Pharmacokinetics of meropenem in intensive care unit patients receiving continuous veno-venous hemofiltration or hemodiafiltration.** *Crit Care Med* 2000, **28**:632–637.
87. Robatel C, Decosterd LA, Biollaz J, Eckert P, Schaller MD, Buclin T: **Pharmacokinetics and dosage adaptation of meropenem during continuous venovenous hemodiafiltration in critically ill patients.** *J Clin Pharmacol* 2003, **43**:1329–1340.
88. Ververs TF, van Dijk A, Vinks SA, Blankstijn PJ, Savelkoul JF, Meulenbelt J, Boereboom FT: **Pharmacokinetics and dosing regimen of meropenem in critically ill patients receiving continuous venovenous hemofiltration.** *Crit Care Med* 2000, **28**:3412–3416.
89. Thalhammer F, Schenk P, Burgmann H, El Menyawi I, Hollenstein UM, Rosenkranz AR, Sunder-Plassmann G, Breyer S, Ratheiser K: **Single-dose pharmacokinetics of meropenem during continuous venovenous hemofiltration.** *Antimicrob Agents Chemother* 1998, **42**:2417–2420.
90. Valtonen M, Tiula E, Takkunen O, Backman JT, Neuvonen PJ: **Elimination of the piperacillin/tazobactam combination during continuous venovenous hemofiltration and haemodiafiltration in patients with acute renal failure.** *J Antimicrob Chemother* 2001, **48**:881–885.
91. Mueller SC, Majcher-Peszynska J, Hickstein H, Francke A, Pertschy A, Schulz M, Mundkowsky R, Drewelow B: **Pharmacokinetics of piperacillin-tazobactam in anuric intensive care patients during continuous venovenous hemodialysis.** *Antimicrob Agents Chemother* 2002, **46**:1557–1560.
92. Dasgupta A: **Introduction to Therapeutic Drug Monitoring.** In *Handbook of Drug Monitoring Methods: Therapeutics and Drugs of Abuse*. Edited by Dasgupta A. New Jersey: Humana Press Inc; 2008:1–39.

93. Dasgupta A: **Introduction to Therapeutic Drug Monitoring and Chromatography.** In *Advances in Chromatographic Techniques for Therapeutic Drug Monitoring.* Edited by Dasgupta A. Boca Raton: CRC Press Taylor and Francis Group, LLC; 2010:1–38.
94. Lam S, Gomolin IH: **Cefepime neurotoxicity: case report, pharmacokinetic considerations, and literature review.** *Pharmacotherapy* 2006, **26**:1169–1174.
95. Ye R-H, Lin M-Y, Sung C-C, Lin S-H: **Standard Dose of Piperacillin Induced Neurotoxicity in Advanced Renal Failure.** *Acta Nephrologica* 2011, **25**:89–92.
96. Huang W-T, Hsu Y-J, Chu P-L, Lin S-H: **Neurotoxicity Associated with Standard Doses of Piperacillin in an Elderly Patient with Renal Failure.** *Infection* 2009, **37**:374–376.
97. Chow KM, Hui AC, Szeto CC: **Neurotoxicity induced by beta-lactam antibiotics: from bench to bedside.** *Eur J Clin Microbiol Infect Dis* 2005, **24**:649–653.
98. Conil J-M, Georges B, Mimoz O, Dieye E, Ruiz S, Cougot P, Samii K, Houin G, Saivin S: **Influence of renal function on trough serum concentrations of piperacillin in intensive care unit patients.** *Intens Care Med* 2006, **32**:2063–2066.
99. Roberts JA, Uldemolins M, Roberts MS, McWhinney B, Ungerer J, Paterson DL, Lipman J: **Therapeutic drug monitoring of beta-lactams in critically ill patients: proof of concept.** *Int J Antimicrob Ag* 2010, **36**:332–339.
100. Blondiaux N, Wallet F, Favory R, Onimus T, Nseir S, Courcol RJ, Durocher A, Roussel-Delvallez M: **Daily serum piperacillin monitoring is advisable in critically ill patients.** *Int J Antimicrob Agents* 2010, **35**:500–503.
101. Pea F, Cojutti P, Sbrojavacca R, Cadeo B, Cristini F, Bulfoni A, Furlanut M: **TDM-guided therapy with daptomycin and meropenem in a morbidly obese, critically ill patient.** *Ann Pharmacother* 2011, **45**:e37.
102. Taccone FS, Cotton F, Roisin S, Vincent JL, Jacobs F: **Optimal meropenem concentrations to treat multidrug-resistant *Pseudomonas aeruginosa* septic shock.** *Antimicrob Agents Ch* 2012, **56**:2129–2131.
103. Patel BM, Paratz J, See NC, Muller MJ, Rudd M, Paterson D, Briscoe SE, Ungerer J, McWhinney BC, Lipman J, Roberts JA: **Therapeutic Drug Monitoring of Beta-Lactam Antibiotics in Burns Patients-A One-Year Prospective Study.** *Ther Drug Monit* 2012, **34**:160–164.
104. Connor MJ Jr, Salem C, Bauer SR, Hofmann CL, Groszek J, Butler R, Rehm SJ, Fissell WH: **Therapeutic drug monitoring of piperacillin-tazobactam using spent dialysate effluent in patients receiving continuous venovenous hemodialysis.** *Antimicrob Agents Chemother* 2011, **55**:557–560.
105. Craig WA: **Interrelationship between pharmacokinetics and pharmacodynamics in determining dosage regimens for broad-spectrum cephalosporins.** *Diagn Microbiol Infect Dis* 1995, **22**:89–96.
106. Drusano GL: **Prevention of resistance: a goal for dose selection for antimicrobial agents.** *Clin Infect Dis* 2003, **36**:S42–S50.
107. Mouton JW, den Hollander JG: **Killing of *Pseudomonas aeruginosa* during continuous and intermittent infusion of ceftazidime in an in vitro pharmacokinetic model.** *Antimicrob Agents Chemother* 1994, **38**:931–936.
108. Tam VH, Schilling AN, Neshat S, Poole K, Melnick DA, Coyle EA: **Optimization of meropenem minimum concentration/MIC ratio to suppress in vitro resistance of *Pseudomonas aeruginosa*.** *Antimicrob Agents Chemother* 2005, **49**:4920–4927.
109. Roberts JA, Lipman J: **Pharmacokinetic issues for antibiotics in the critically ill patient.** *Crit Care Med* 2009, **37**:840–851. quiz 859.
110. Verdier MC, Tribut O, Tattevin P, Le Tulzo Y, Michelet C, Bentue-Ferrer D: **Simultaneous determination of 12 beta-lactam antibiotics in human plasma by high-performance liquid chromatography with UV detection: application to therapeutic drug monitoring.** *Antimicrob Agents Chemother* 2011, **55**:4873–4879.
111. McWhinney BC, Wallis SC, Hillister T, Roberts JA, Lipman J, Ungerer JP: **Analysis of 12 beta-lactam antibiotics in human plasma by HPLC with ultraviolet detection.** *J Chromatogr B Analyt Technol Biomed Life Sci* 2010, **878**:2039–2043.
112. Morris RG, Tett SE, Ray JE: **Cyclosporin A monitoring in Australia: consensus recommendations.** *Ther Drug Monit* 1994, **16**:570–576.
113. Ahrer W, Scherwenk E, Buchberger W: **Determination of drug residues in water by the combination of liquid chromatography or capillary electrophoresis with electrospray mass spectrometry.** *J Chromatogr A* 2001, **910**:69–78.
114. Van Emon JM, LG C: **Environmental monitoring and human exposure assessment using immunochemical techniques.** *J Microbiol Methods* 1998, **32**:121–131.
115. Norris RL, Martin JH, Thompson E, Ray JE, Fullinlaw RO, Joyce D, Barras M, Jones GR, Morris RG: **Current status of therapeutic drug monitoring in Australia and New Zealand: a need for improved assay evaluation, best practice guidelines, and professional development.** *Ther Drug Monit* 2010, **32**:615–623.
116. Smith PF, Petros WP, Soucie MP, Copeland KR: **New modified fluorescence polarization immunoassay does not falsely elevate vancomycin concentrations in patients with end-stage renal disease.** *Ther Drug Monit* 1998, **20**:231–235.
117. Benito-Pena E, Moreno-Bondi MC, Orellana G, Maquieira A, van Amerongen A: **Development of a novel and automated fluorescent immunoassay for the analysis of beta-lactam antibiotics.** *J Agric Food Chem* 2005, **53**:6635–6642.
118. Usleber E, Litz S, Martlbauer E: **Production and characterization of group-specific antibodies against penicillin antibiotics.** *Food Agric Immunol* 1998, **10**:317–324.

doi:10.1186/2110-5820-2-35

Cite this article as: Sime et al.: Does Beta-lactam Pharmacokinetic Variability in Critically Ill Patients Justify Therapeutic Drug Monitoring? A Systematic Review. *Annals of Intensive Care* 2012 2:35.

Submit your manuscript to a SpringerOpen[®] journal and benefit from:

- Convenient online submission
- Rigorous peer review
- Immediate publication on acceptance
- Open access: articles freely available online
- High visibility within the field
- Retaining the copyright to your article

Submit your next manuscript at ► springeropen.com