

PUBLISHED VERSION

Evan Atlantis, Paul Fahey, Belinda Cochrane, Gary Wittert, Sheree Smith
Endogenous testosterone level and testosterone supplementation therapy in chronic obstructive pulmonary disease (COPD): A systematic review and meta-analysis
BMJ Open, 2013; 3(8):1-16

This is an Open Access article distributed in accordance with the Creative Commons Attribution Non Commercial (CC BY-NC 3.0) license, which permits others to distribute, remix, adapt, build upon this work non-commercially, and license their derivative works on different terms, provided the original work is properly cited and the use is non-commercial. See: <http://creativecommons.org/licenses/by-nc/3.0/>

Originally published at:
<http://doi.org/10.1136/bmjopen-2013-003127>

PERMISSIONS

<http://creativecommons.org/licenses/by-nc/3.0/>



Attribution-NonCommercial 3.0 Unported (CC BY-NC 3.0)

This is a human-readable summary of (and not a substitute for) the [license](#).

[Disclaimer](#)

You are free to:

Share — copy and redistribute the material in any medium or format

Adapt — remix, transform, and build upon the material

The licensor cannot revoke these freedoms as long as you follow the license terms.

Under the following terms:



Attribution — You must give **appropriate credit**, provide a link to the license, and **indicate if changes were made**. You may do so in any reasonable manner, but not in any way that suggests the licensor endorses you or your use.



NonCommercial — You may not use the material for **commercial purposes**.

No additional restrictions — You may not apply legal terms or **technological measures** that legally restrict others from doing anything the license permits.

<http://hdl.handle.net/2440/81408>

Endogenous testosterone level and testosterone supplementation therapy in chronic obstructive pulmonary disease (COPD): a systematic review and meta-analysis

Evan Atlantis,^{1,2} Paul Fahey,³ Belinda Cochrane,^{1,4,5} Gary Wittert,² Sheree Smith^{1,6}

To cite: Atlantis E, Fahey P, Cochrane B, *et al*. Endogenous testosterone level and testosterone supplementation therapy in chronic obstructive pulmonary disease (COPD): a systematic review and meta-analysis. *BMJ Open* 2013;**3**: e003127. doi:10.1136/bmjopen-2013-003127

► Prepublication history and additional material for this paper is available online. To view these files please visit the journal online (<http://dx.doi.org/10.1136/bmjopen-2013-003127>).

Received 26 April 2013
Accepted 31 May 2013

For numbered affiliations see end of article.

Correspondence to

Dr Evan Atlantis;
e.atlantis@uws.edu.au

ABSTRACT

Objective: Low testosterone level may be a reversible risk factor for functional disability and deterioration in patients with chronic obstructive pulmonary disease (COPD). We sought to systematically assess the endogenous testosterone levels and effect of testosterone therapy on exercise capacity and health-related quality of life (HRQoL) outcomes in COPD patients, as well as to inform guidelines and practice.

Design: Systematic review and meta-analysis.

Data sources: We searched PubMed, Scopus, Cochrane Library, CINAHL, Health Source Nursing and PsychINFO and the reference lists of retrieved articles published before May 2012.

Inclusion criteria: Observational studies on endogenous testosterone levels in people with chronic lung disease compared with controls, or randomised controlled trials (RCTs) on testosterone therapy for exercise capacity and/or HRQoL outcomes in COPD patients were eligible.

Data extraction and analysis: Data on the mean difference in endogenous total testosterone (TT) values, and the mean difference in exercise capacity and HRQoL values were extracted and pooled using random effects meta-analysis.

Results: Nine observational studies in 2918 men with COPD reported consistently lower levels of TT compared with controls (weighted mean difference was -3.21 nmol/L (95% CI -5.18 to -1.23)). Six RCTs in 287 participants yielded five studies on peak muscle strength and peak cardiorespiratory fitness outcomes (peak oxygen uptake (VO_2) and workload) and three studies on HRQoL outcomes. Testosterone therapies significantly improved peak muscle strength (standardised mean difference (SMD) was 0.31 (95% CI 0.05 to 0.56)) and peak workload (SMD was 0.27 (95% CI 0.01 to 0.52)) compared with control conditions (all but one used placebo), but not peak VO_2 (SMD was 0.21 (95% CI -0.15 to 0.56)) or HRQoL (SMD was -0.03 (95% CI -0.32 to 0.25)).

Conclusions: Men with COPD have clinically relevant lower than normal TT levels. Insufficient evidence from short-term studies in predominately male COPD patients suggests that testosterone therapy improves exercise capacity outcomes, namely peak muscle strength and peak workload.

ARTICLE SUMMARY

Article focus

- To systematically assess the mean endogenous testosterone level in people with chronic lung disease compared with controls from observational studies.
- To systematically assess the effect of testosterone therapy on exercise capacity and health-related quality of life outcomes in chronic obstructive pulmonary disease (COPD) patients from randomised controlled trials (RCTs).

Key messages

- Men with COPD have clinically relevant lower than normal total testosterone levels compared with controls.
- Limited evidence from short-term RCT studies in predominately male COPD patients suggest that testosterone therapy improves exercise capacity outcomes, namely peak muscle strength and peak workload.

Strengths and limitations of this study

- Key findings were based on a high-quality systematic review and meta-analysis level of evidence.
- Since only a small number of studies conducted in specific populations were included, the findings of this review may not be relevant to other countries and key groups, which will require further research.

INTRODUCTION

Chronic obstructive pulmonary disease (COPD) is currently ranked the fifth leading cause of global disability (health loss).¹ Health status or health-related quality of life (HRQoL) is a clinically important measurement of disability among patients with COPD for prognostic studies and trials.^{2–4} Exercise capacity, one of the main determinants of HRQoL, is significantly impaired in COPD patients.^{3–5} Dyspnoea and fatigue due to skeletal muscle dysfunction, among other



physiological abnormalities, are cardinal symptoms that limit exercise capacity in COPD patients.⁶ This is partly due to decreases in muscle strength and mass (often called 'cachexia'), since they are characteristic features of skeletal muscle dysfunction contributing to exercise intolerance and consequential deterioration in HRQoL.^{5, 6} Conversely, pulmonary rehabilitation (PR) including exercise (namely resistance training (RT)) leads to clinically relevant improvements in muscle strength and HRQoL,^{7, 8} indicating that skeletal muscle dysfunction should be a primary therapeutic target for intervention in patients with COPD.

Since the testosterone level has been shown to be positively associated with muscle strength and cardiorespiratory fitness accounting for physical activity and muscle mass,^{9, 10} a low testosterone level may be an independent risk factor for functional disability and deterioration in COPD. For example, the levels of testosterone and other androgenic hormones were decreased in male and female COPD patients compared with controls in a few studies.¹¹⁻¹³ The potential mechanisms for this endocrine dysfunction most likely involve hypoxaemia, hypercapnia, systemic inflammation and the use of glucocorticoids.¹⁴

Thus, it is important to reliably establish whether the mean endogenous testosterone level is decreased in patients with COPD, because this condition is reversible with testosterone supplementation therapy. Indeed, a small but promising body of randomised controlled trial (RCT) evidence suggests that testosterone therapy improves exercise capacity and HRQoL without increasing serious adverse events.¹⁵⁻¹⁷ While it is difficult to explain this apparent therapeutic benefit, increased cardiac output,¹⁸ haemoglobin and haematocrit,¹⁹ baroreflex sensitivity²⁰ and exercise tolerance due to improvements in peak oxygen uptake (peak VO₂) and muscle strength²⁰ are all plausible mechanisms.

However, our initial analysis of the available published literature indicates an absence of a systematic review of relevant studies on endogenous testosterone levels and testosterone therapy in patients with COPD. We therefore sought to systematically review previous research to assess the mean endogenous testosterone level in people with chronic lung disease compared with controls, and the effects of testosterone therapies on exercise capacity and HRQoL outcomes in COPD patients, to inform guidelines and practice.

METHODS

Search strategy

We searched PubMed, Scopus, Cochrane Library, CINAHL, Health Source Nursing and the PsychINFO electronic databases for articles published before May 2012. Search syntaxes were developed in consultation with an experienced university research librarian taking into account a broad range of terms and phrases used in definitions of testosterone and COPD (full electronic search strategies for the PubMed, Scopus and Cochrane

Library databases in online supplementary appendix pages 1 and 2). Reference lists of potentially eligible articles were searched by hand to identify additional studies missed by our search strategy.

Study selection

One reviewer (EA) identified potentially relevant studies for inclusion by screening titles and/or abstracts of all citations identified with our database searches. A second screening was performed on the full text of these articles. Observational studies in adult populations that reported endogenous testosterone levels in men and/or women (separately) with chronic lung disease (cases) compared with controls, or RCTs that reported the effects of testosterone treatment on exercise capacity and HRQoL outcomes in COPD patients were eligible. There were no language restrictions for articles.

Data extraction

Data extraction and quality assessment of included studies were performed and/or verified independently by three reviewers (EA, BC and SS). Discrepancies were resolved through discussion. Authors of relevant studies were contacted, where possible, for data that could not be extracted from the published articles.

Quality assessment

For methodology and quality assessment, quality checklists were developed to identify potential sources of bias (tables in online supplementary appendix pages 3 and 4). Quality items for observational studies reviewed were (each worth 1 numerical point) as follows: (1) COPD or chronic lung disease was reported to have been clinically diagnosed or categorised according to the WHO International Statistical Classification of Diseases and Related Health Problems (ICD) system, (2) endogenous testosterone level was measured by radioimmunoassay or liquid chromatography-tandem mass spectrometry, (3) the study population was representative of the clinical setting or community (ie, demographic characteristics of cases and hospital controls were typical and community cases or controls were randomly selected) and (4) there was adequate adjustment or exclusion or matching for covariates known to be associated with COPD and hypogonadism in men (each worth 0.2 numerical point): (a) age, (b) socioeconomic or partner status, (c) central or general obesity, (d) smoking status, (e) alcohol intake, (f) physical activity, (g) depression or anxiety (or medications), (h) metabolic syndrome or cardiovascular disease (or medications), (i) systemic inflammation (or glucocorticoids) and (j) sleep apnoea (or treatments).

Quality items for RCT studies reviewed were (each worth 1.0 numerical point) as follows: (1) study eligibility criteria were adequately described, (2) randomisation methodology was adequate (ie, evidence suggesting that the 'random' method was used to generate and implement random allocation sequence), (3) allocation

concealment was adequate (ie, evidence to suggest that a robust method was used for concealing the sequence of treatment allocation (eg, independent IT or telephone service or sealed opaque envelopes only opened in front of the participant), (4) between-group prognostic indicators were balanced (ie, evidence showing that groups were similar at the outset for these prognostic indicators), (5) care providers were blinded to treatment allocation, (6) between-group drop-out rates were balanced, (7) intention-to-treat analysis was included and (8) adverse events were reported.

Our quality checklist scales were designed based on criteria for assessment of observational studies²¹ and RCTs^{21 22} and allowed summed scores to range from 0 to 5 points and from 0 to 8 points, respectively, reflecting lowest to highest quality. Studies were considered 'better quality' if they received a score of 3 or higher for observational studies and of 5 or higher for RCTs, since that meant that they had most of our quality items.

Primary outcomes

The primary outcomes were the mean difference in endogenous total testosterone (TT) values between the case and control groups for observational studies (the most frequently reported testosterone outcome in relevant studies), and the mean difference in exercise capacity and HRQoL values after intervention (post-treatment) between the treatment and control groups for RCTs. Where necessary for observational studies, we estimated the mean and variance from the median, range and sample size using methods which have been shown to be reasonably robust in non-extreme circumstances.²³ Where necessary for RCTs, the post-treatment means were derived from the within-group changes and the control group SD carried forward from the baseline values.²⁴ Standardised mean differences (SMDs) were calculated using Glass' Delta method. Exercise capacity outcomes included any assessment of cardiorespiratory fitness and peripheral skeletal muscle strength. Where multiple cardiorespiratory fitness outcomes were reported, we first chose peak VO₂ measures and then prioritised peak workload (power output) laboratory assessments of cardiorespiratory fitness over field tests. Where multiple muscle strength outcomes were reported, we prioritised peak isometric measures over peak dynamic measures and knee extension over other joint movements. HRQoL outcomes included any patient-reported assessment of health status or functional disability. Where multiple HRQoL outcomes/scales were reported, we first chose summed score scales, and then prioritised subscales that measure 'fatigue' symptoms, and the most frequently reported HRQoL outcome in the other studies reviewed.

Data synthesis

Three reviewers (EA, BC and SS) independently collated and/or verified extracted data to present a descriptive synthesis of important study characteristics and a quantitative synthesis of effect estimates.

Secondary outcomes

The secondary outcomes were data about adverse events reported in RCTs for a descriptive synthesis.

Statistical methods

We pooled and weighted studies first using random effects meta-analysis models, and second using fixed effects models for verification.²⁵ Where necessary, we standardised laboratory values for endogenous TT levels between observational studies using the International System of Units (SI units), expressed in nanomoles per litre (nmol/L). These studies were then pooled to estimate the inverse variance weighted mean difference (WMD), including the DerSimonian and Laird 95% CI, between cases and controls. Where papers presented medians without means, we estimated the missing mean as being equal to the median for meta-analysis.²³

In examining the effects of testosterone treatment on exercise capacity and HRQoL outcomes, the SMD from each RCT was pooled to produce an overall estimate of effect, and associated 95% CI, between the treatment and control groups. For each meta-analysis model, the degree of heterogeneity in SMDs was assessed by visual inspection, the I² statistic (moderate being <50%²⁶) and the χ^2 test of goodness of fit.²⁷ Where evidence of heterogeneity was observed, we checked data extracted from individual outlier studies, qualitatively investigated reasons for their different results and explored the effects of study exclusion in sensitivity analyses.

We also used sensitivity analysis to investigate the robustness of the meta-analyses models. We variously excluded RCTs in men and women, placebo only (rather than placebo with exercise) controlled trials, longer duration trials (≥ 12 weeks) and studies of lower quality (score <3 for observational studies; score <5 for RCTs). And we repeated the meta-analysis models using different cardiorespiratory fitness outcomes. Publication bias, which reflects the tendency for smaller studies to be published in the literature only when the findings are positive, was assessed visually using funnel plots.²⁸ All calculations were performed in Stata V.12 (StataCorp, College Station, Texas, USA) using the 'metan' and 'metafunnel' commands. A two-tailed p value <0.05 was considered statistically significant throughout the analyses.

RESULTS

Figure 1 presents a flow chart summarising the identification of potentially relevant studies, as well as those included and excluded (see online supplementary appendix page 8). Our search strategy identified 906 citations after the duplicates were removed. Of these, 865 citations were excluded after the first screening of titles and/or abstracts for inclusion and exclusion criteria, leaving 41 citations for a second full text screening. Hand searching the reference lists of these articles identified two additional potentially relevant citations.

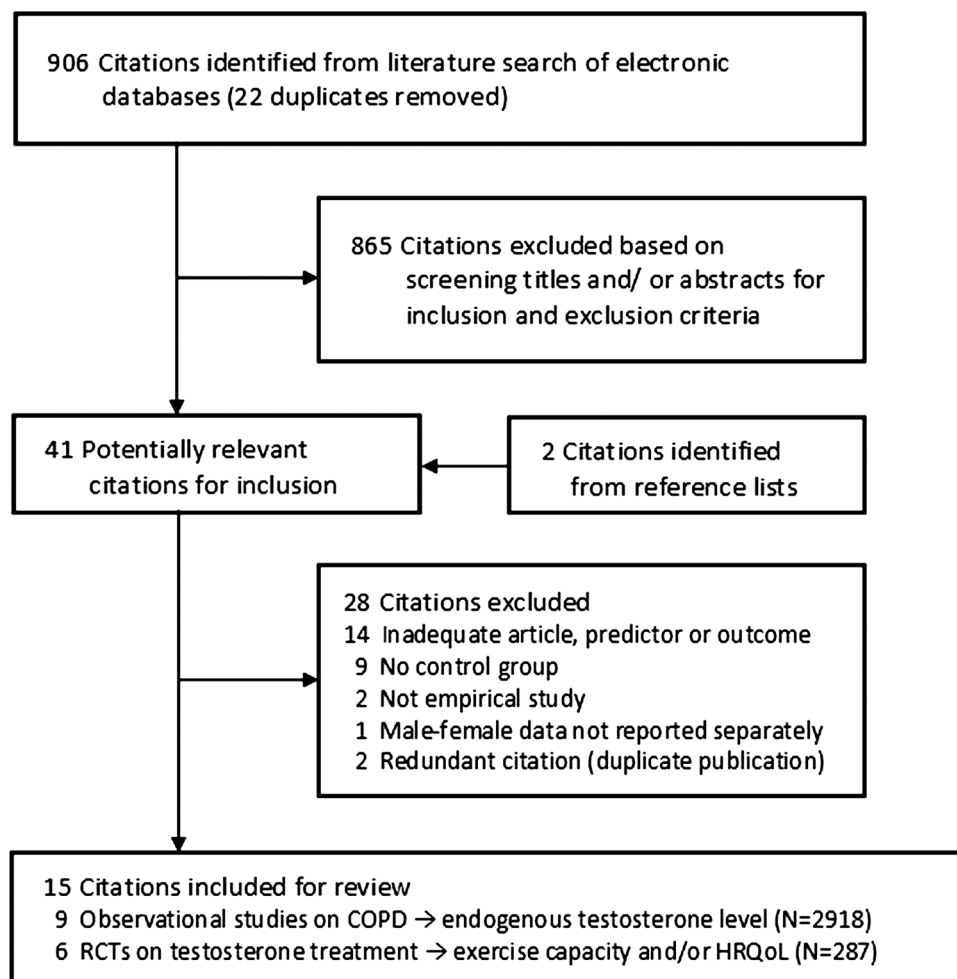


Figure 1 Flow chart summarising identification of studies included for review.

After further assessment of these 43 citations, 28 were excluded for reasons listed in [figure 1](#), leaving 15 for final inclusion in the systematic review. Most studies were excluded for inadequate predictor or outcome variables, or for not having a control group (list of excluded citations; see online supplementary appendix pages 5–7).

Descriptive data synthesis

[Table 1](#) presents the study characteristics of nine observational studies included for review, which were published between 1981 and 2011. Studies were conducted in Scotland,^{29 30} Sweden,³¹ the USA,³² Taiwan,³³ Greece,¹² Turkey,¹³ Norway³⁴ and Belgium.³⁵ The degree of severity of airflow limitation in COPD cases ranged from mild-to-very severe, assessed according to the Global Initiative for Chronic Obstructive Lung Disease criteria³⁶ in four studies,^{12 13 33 35} and by various spirometry criteria in four^{29 30 32 34} of the five remaining studies. Control participants were recruited from primary care settings in six studies.^{12 29 30 32 33 35} The sample sizes ranged from 16 to 213, resulting in a total of 2918 participants across studies. The mean age of the samples ranged from 50 to 71 years. All the observational studies were conducted in men. The mean quality

scores ranged from 2.2 to 4, and four studies received a score of 3 or higher.^{12 13 32 34}

[Table 2](#) presents the study characteristics of six RCTs included for review, which were published between 2003 and 2011. Studies were conducted in the USA,³⁷ The Netherlands,³⁸ Brazil,³⁹ France,¹⁶ Canada⁴⁰ and Norway.⁴¹ Major inclusion criteria were stable COPD or chronic respiratory failure in all studies, various spirometry criteria in all but one study,¹⁶ low TT in only one study³⁷ and low body mass index in only two studies.^{16 39} Major exclusion criteria were a range of chronic conditions in all studies, prostatic conditions in four studies^{16 37 39 40} and elevated haemoglobin in one study.³⁷ The sample sizes ranged from 16 to 122, resulting in a total of 287 participants across studies. The mean age of the samples ranged from 66 to 69 years. All but two studies^{16 40} were conducted in men only. The baseline mean TT levels ranged from 9.6 to 21.6 nmol/L for men, and from 0.42 to 0.45 nmol/L for women as reported in one study.¹⁶ The testosterone therapies used were oral testosterone undecanoate in one study,¹⁶ oral stanozolol after a baseline intramuscular injection of testosterone in another study³⁹ and intramuscular injections (testosterone enanthate^{37 41} and nandrolone decanoate³⁸) in all the remaining studies. Four studies investigated

Table 1 Characteristics of observational studies reviewed

Study identification	Country	Participants		Sample size	Sex	Mean age (years)	Mean (SD) or median* (range) total testosterone (nmol/L)				Covariate considerations (adjusted/excluded/matched)	Quality score (out of 5)
		Cases, assessment	Controls				Cases	Controls	Cases	Controls		
Bratel <i>et al</i> ^{β1}	Sweden	COPD with severe airway obstruction and daytime hypoxaemia, not reported	Age-matched 'healthy' participants	32	M	69	14.3	6.9	17.9	6.9	Age	1.2
Gow <i>et al</i> ^{α9}	Scotland	COPD, spirometry FEV ₁ <40% and FVC <65% predicted	Inpatients ready for discharge	26	M	70	10.7	3.0–19.5	11.0	1.8–21.9	Age, thyroid disease, oral corticosteroids	2.9
Iqbal <i>et al</i> ^{β2}	USA	Chronic lung disease, predominantly spirometry FEV ₁ /FVC <80% predicted	Primary care clinic patients without history of chronic lung disease or corticosteroid treatments	85	M	62	11.1	9.8	14.0	8.6	Age, ethnicity, BMI, physical activity, smoking status, caffeine and alcohol consumption, thyroid and rheumatologic conditions, medications including glucocorticoids, testosterone, and for osteoporosis	4.0
Hsu <i>et al</i> ^{β3}	Taiwan	Chronic bronchitis and COPD, GOLD criteria stage 1–4	Outpatients with stable urolithiasis or prostatitis	213	M	71	14.7	7.7	15.3	6.4	Age, chronic diseases including treated benign prostate hyperplasia, other chronic lung disease, exacerbation	2.9
Kaparianos <i>et al</i> ^{α12}	Greece	COPD, GOLD criteria mean FEV ₁ 54%, mean FEV ₁ /FVC 59%	Outpatient smokers	125	M	61	11.2	4.4	18.4	4.5	Age, ethnicity, BMI, smoking, chronic diseases, endothelin-1 pro-inflammatory allele, other chronic lung diseases, medications including β ₂ -adrenergic agonists, corticosteroids, follicle stimulating hormone, erythrocyte sedimentation rate	3.5
Karadag <i>et al</i> ^{α13}	Turkey	COPD, GOLD criteria stage 2–3	Age-matched participants	125	M	63	13.2	5.5	16.6	5.5	Age, sexual partner status, BMI, medications	3.0

Continued

Table 1 Continued

Study identification	Country	Participants		Sample size	Sex	Mean age (years)	Mean (SD) or median* (range) total testosterone (nmol/L)				Covariate considerations (adjusted/excluded/matched)	Quality score (out of 5)
		Cases, assessment	Controls				Cases	Controls	Cases	Controls		
Semple <i>et al</i> ^{β0}	Scotland	COPD, spirometry FEV ₁ and FEV ₁ /FVC <70%	Age-matched inpatients	16	M	50	13.1	4.4	20.3	5.4	that interfere with sex hormones, chronic diseases, treated urogenital disease, aged ≥75 years, regular systemic corticosteroids, oestradiol, tumour necrosis factor-α Age	2.7
Svartberg <i>et al</i> ^{β4}	Norway	Representative population with COPD, spirometry FEV ₁ <50% predicted with FEV ₁ /FVC <70% predicted	Representative population with spirometry FEV ₁ ≥50% predicted	2197	M	66	12.7	5.3	14.0	5.5	Age, waist circumference, smoking status	3.6
Van Vliet <i>et al</i> ^{β5}	Belgium	COPD, GOLD criteria stage 1–4	Outpatients with normal lung function	99	M	65	9.0*	6.8–12.9	12.3*	8.8–16.2	Age, BMI, calculated free testosterone, sex hormone binding globulin	2.9

BMI, body mass index; BTS, British Thoracic Society; COPD, chronic obstructive pulmonary disease; FEV₁, forced expiratory volume in 1 s; FVC, forced vital capacity; GOLD, Global Initiative for Chronic Obstructive Lung Disease; M, men; matched, considered if between-group difference in characteristic was not likely statistically significant (p<0.05).

Table 2 Characteristics of randomised controlled trials reviewed

Study identification	Country	Sample size	Population		Sex (M/W)	Mean age (years)	Baseline mean total testosterone (nmol/L)	
			Major inclusion criteria	Major exclusion criteria			Treated	Controls
Casaburi <i>et al</i> ^{β7}	USA	47	Stable COPD, spirometry FEV ₁ ≤60% predicted and FEV ₁ /VC ≤60%; total testosterone ≤13.9 nmol/L	CVD, low or high bodyweight, prostatic indications, haemoglobin ≥16 g/dL, orthopaedic impairments	M	67	(a) 10.5; (b) 14.1	(a) 10.5; (b) 9.6
Creutzberg <i>et al</i> ^{β8}	The Netherlands	56	Stable COPD, ATS criteria, spirometry FEV ₁ <70% predicted and increase in FEV ₁ <10% postbronchodilation	Obesity, malignancies, CVD, gastrointestinal inflammatory disorders, type 1 diabetes, oxygen dependency at rest	M	66	13.4	14.6
Ferreira <i>et al</i> ^{β9}	Brazil	17	Ambulatory and stable COPD, spirometry maximal inspiratory pressure <60% predicted and BMI <20 kg/m ²	CVD, prostatic indications	M	69	14.4	17.2
Pison <i>et al</i> ¹⁶	France	122	Stable CRF, >18 years, PaO ₂ ≤8 kPa, long-term oxygen therapy and/or home mechanical ventilation >3 months, BMI ≤21 kg/m ² or fat-free mass index <25th centile	Pulmonary hypertension, sleep apnoea, prostatic indications, neuromuscular diseases, cystic fibrosis, conditions compromising 6-month survival, hormone-dependent cancer, women of childbearing age, elevated aminotransferase	M/W	66	M 12.7; W 0.45	M 13.6; W 0.42
Sharma <i>et al</i> ⁴⁰	Canada	16	Stable COPD, GOLD criteria stage 3–4, spirometry FEV ₁ <50% predicted and FEV ₁ /FVC <0.7	History of asthma, obesity, malignancy, CVD, prostatic indications, renal, hepatic, gastrointestinal or endocrine disease, recent surgery	M/W	68	M NR	W NR
Svartberg <i>et al</i> ⁴¹	Norway	29	Stable COPD, moderate to severe, spirometry FEV ₁ <60% predicted	Asthma, malignancies, CVD, hepatic or endocrine disease	M	66	21.6	20.5

Continued

Table 2 Continued

Treatments	Control conditions	Trial duration (weeks)	Outcomes (assessments, units)	Quality score (out of 8)
(a) Testosterone enanthate, 100 mg/week IM; (b) Testosterone enanthate, 100 mg/week IM with RT	(a) Placebo; (b) Placebo with RT	10	Muscle strength (leg press, 1RM kg); cardiorespiratory fitness (bicycle, peak VO ₂ L/min and peak workload Watts)	5.0
Nandrolone decanoate, 50 mg/2 weeks IM	Placebo	8	Muscle strength (knee extension, peak isometric force Newtons); cardiorespiratory fitness (bicycle, peak workload Watts and peak VO ₂ mL/min); HRQoL (SGRQ total score)	6.0
Testosterone, 250 mg IM at baseline and oral stanozolol, 12 mg/day with PR	Placebo with PR 9–27 weeks	27	Cardiorespiratory fitness (bicycle, peak VO ₂ % predicted; 6MWT, distance metres)	5.0
Oral testosterone undecanoate, M 80 mg/W 40 mg twice daily with PR	Home education on self-management of COPD-related stress and anxiety	13	Muscle strength (knee extension, peak isometric force Newtons); cardiorespiratory fitness (6MWT, distance metres; bicycle, peak workload Watts); HRQoL (CRQ total score)	5.0
Nandrolone decanoate, M 50 mg/W 25 mg/2 weeks IM with PR	Placebo with PR	16	Muscle strength (knee extension, peak isometric force units NR); cardiorespiratory fitness (bicycle, peak VO ₂ % predicted and peak workload Watts; 6MWT, distance metres); HRQoL (CRQ fatigue subscore)	4.5
Testosterone enanthate, 250 mg/4 weeks IM	Placebo	26	Cardiorespiratory fitness (6MWT, distance metres)	5.5

1RM, one repetition maximum; 6MWT, 6 min walking test; ATS, American Thoracic Society; BMI, body mass index; COPD, chronic obstructive pulmonary disease; CRF, chronic respiratory failure; CRQ, chronic respiratory questionnaire; CVD, cardiovascular diseases; FEV₁, forced expiratory volume in 1 s; FVC, forced vital capacity; GOLD, Global Initiative for Chronic Obstructive Lung Disease; HRQoL, health-related quality of life; IM, intramuscular injection; M, men; NR, not reported; PR, pulmonary rehabilitation; RT, resistance training; VO₂, volume of oxygen uptake; W, women.

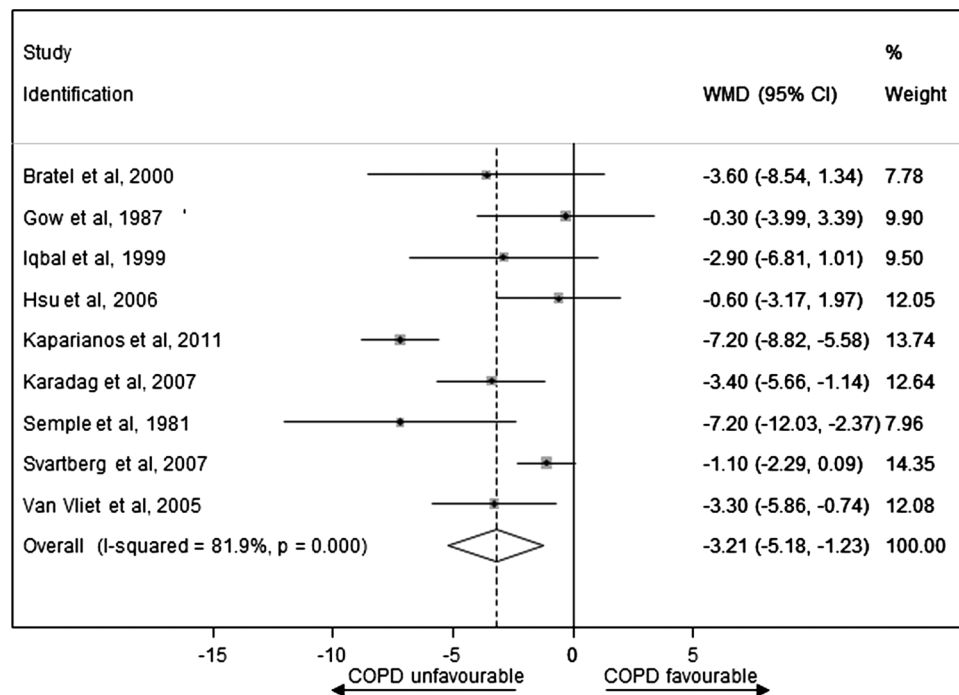


Figure 2 Weighted mean difference in the endogenous total testosterone level between the case and control groups for observational studies.

the combined effects of testosterone therapy with RT³⁷ or PR.^{16 39 40} All but one study¹⁶ used placebo control conditions. Trial durations ranged from 8 to 27 weeks. Primary outcomes were peak muscle strength in five studies (from four citations^{16 37 38 40}), peak VO₂ in five studies (from four citations^{37–40}), peak workload in five studies (from four citations^{16 37 38 40}), 6 min walking test (6MWT) in four studies^{16 39–41} and HRQoL in three studies.^{16 38 40} The mean quality scores ranged from 4.5 to 6, and all but one study⁴⁰ received a score of 5 or higher.

Quantitative data synthesis

Effect of COPD exposure on an endogenous TT level

Figure 2 presents WMD on an endogenous TT level between the case and control groups for observational studies (see online supplementary appendix page 9). Men with COPD had significantly lower levels of TT compared with controls (pooled WMD was -3.21 nmol/L

(-5.18 to -1.23). There was a high degree of heterogeneity between studies ($I^2=81.9%$, $p<0.001$) that was mostly a result of variation in the degree of deference rather than an unfavourable direction towards the null. The sensitivity analyses presented in table 3 show that the pooled WMD was substantially changed after exclusion of lower quality studies (increased to -3.68 (-7.00 to -0.36)) and one large sample size study³⁴ (increased to -3.56 (-5.63 to -1.49)). Finally, for the one study³³ which provided unadjusted mean differences and mean differences adjusted for age, waist circumference and smoking status, a model using unadjusted rather than adjusted values decreased the pooled WMD to -2.95 (-4.63 to -1.27). In addition, a funnel plot was produced which showed only slight evidence of publication bias, since WMD in TT was small (-0.60 ³³ and -1.10 nmol/L³⁴) for two of the largest studies (figure 3; see online supplementary appendix page 10).

Table 3 Sensitivity analysis of observational studies on COPD exposure → total testosterone outcome meta-analysis

	N studies	N sample	Total testosterone WMD	(95% CI)	p Value for heterogeneity
Fixed effects model	9	2918	-3.00	(-3.75 to -2.26)	<0.001
Exclusion of five lower quality studies (score <3)	4	2532	-3.68	(-7.00 to -0.36)	<0.001
Model using unadjusted rather than adjusted values in one study	9	2918	-2.95	(-4.63 to -1.27)	<0.001
Exclusion of a large sample size study	8	721	-3.56	(-5.63 to -1.49)	<0.001

COPD, chronic obstructive pulmonary disease; N, number; WMD, weighted mean difference.

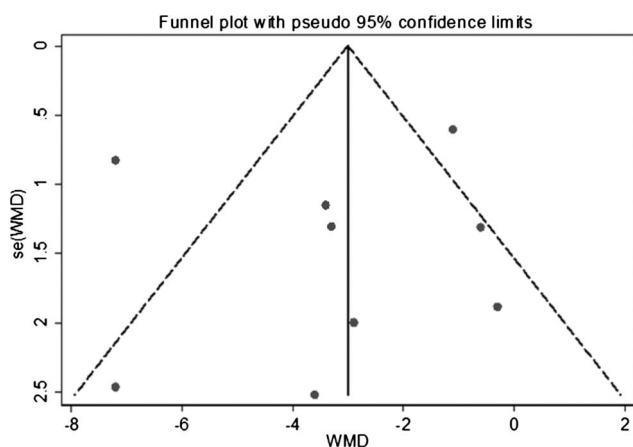


Figure 3 Funnel plot assessing symmetry of the weighted mean difference in the total testosterone level between the case and control groups for observational studies.

Effect of testosterone therapy on exercise capacity and HRQoL outcomes

Figure 4 presents SMD in peak muscle strength outcomes after testosterone therapy between the treatment and control groups for RCTs (see online supplementary appendix page 11). Testosterone therapies significantly improved standardised peak muscle strength outcomes compared with control conditions (pooled SMD was 0.31 (0.05 to 0.56)), and there was little evidence of statistical heterogeneity between studies ($I^2=0\%$, $p=0.839$). The sensitivity analyses presented in table 4 shows that the pooled SMD was similar after exclusion of one lower quality study⁴⁰ (0.31 (0.04 to 0.57)), but was substantially

changed after exclusion of two placebo only controlled studies (no longer statistically significant 0.30 (−0.01 to 0.62)), and the two studies in men and women that were also the two longer duration studies^{16 40} (decreased to 0.21 (−0.18 to 0.60)). In addition, a funnel plot was produced which showed only slight evidence of publication bias, since SMD in peak muscle strength outcomes was consistent in all but one treatment arm in one study³⁷ (figure 5; see online supplementary appendix page 12).

Figure 6 presents SMD in peak VO_2 outcomes after testosterone therapy between the treatment and control groups for RCTs (see online supplementary appendix page 13). Testosterone therapies consistently failed to show significant improvements in standardised peak VO_2 outcomes compared with control conditions (pooled SMD was 0.21 (−0.15 to 0.56); $I^2=4.8\%$, $p=0.379$). The sensitivity analyses presented in table 5 shows that this null effect was similar after exclusion of one lower quality study⁴⁰ (0.13 (−0.27 to 0.54)), two placebo only controlled studies (0.03 (−0.60 to 0.66)), one study in men and women⁴⁰ (0.13 (−0.27 to 0.54)), and two longer duration studies^{39 40} (0.27 (−0.12 to 0.67)), and in the model using 6MWT outcomes (0.10 (−0.34 to 0.53)). Conversely, testosterone therapies significantly improved cardiorespiratory fitness in the model using peak workload rather than peak VO_2 outcomes (pooled SMD was 0.27 (0.01 to 0.52)), and there was little evidence of statistical heterogeneity between studies ($I^2=0\%$, $p=0.741$).

Figure 7 presents SMD in peak HRQoL outcomes after testosterone therapy between the treatment and control groups for RCTs (see online supplementary

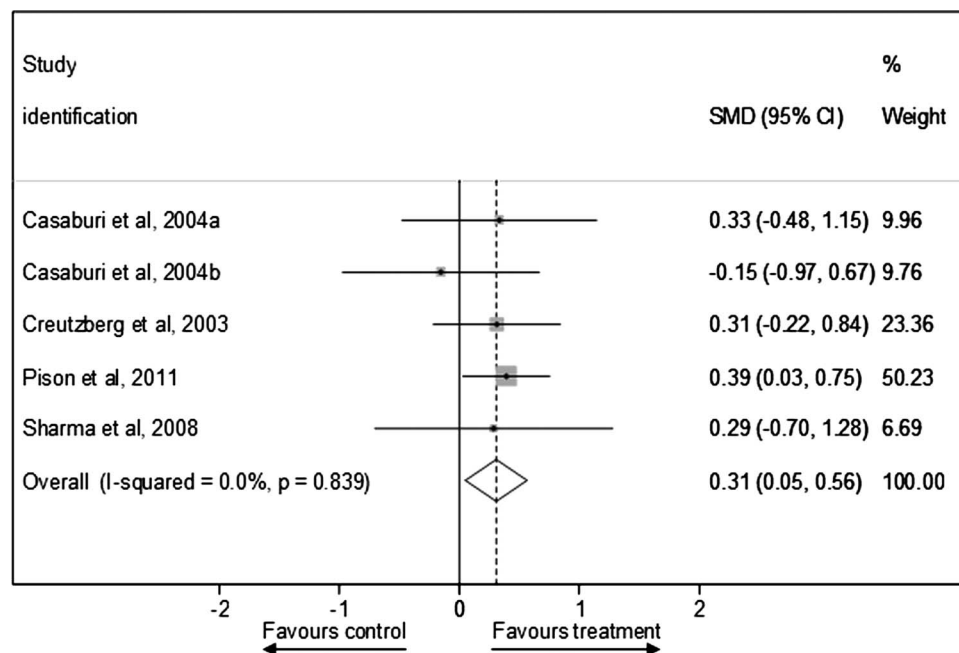


Figure 4 Standardised mean difference in peak muscle strength outcomes after testosterone therapy between the treatment and control groups for randomised controlled trials.

**Table 4** Sensitivity analysis of randomised controlled trials on testosterone treatment → muscle strength outcomes meta-analysis

	N studies	N sample	SMD (95% CI)	p Value for heterogeneity
Fixed effects model	5	241	0.31 (0.05 to 0.56)	0.839
Exclusion of one lower quality study (score <5.0)	4	225	0.31 (0.04 to 0.57)	0.699
Exclusion of two placebo only control studies	3	161	0.30 (−0.01 to 0.62)	0.491
Exclusion of two studies in men and women	3	103	0.21 (−0.18 to 0.60)	0.611
Exclusion of two longer duration studies (≥ 12 weeks)	3	103	0.21 (−0.18 to 0.60)	0.611

N, number; SMD, standardised mean difference.

appendix page 14). Testosterone therapies consistently failed to show better standardised HRQoL outcomes compared with control conditions (pooled SMD was -0.03 (-0.32 to 0.25); $I^2=0\%$, $p=0.934$). The sensitivity analyses showed that this null effect was comparable in the fixed effects model (-0.03 (-0.32 to 0.25)) and after exclusion of one lower quality study⁴⁰ (-0.04 (-0.34 to 0.25)).

Adverse events

Two RCTs showed that testosterone therapy was associated with more serious adverse events compared with the control group. One study reported an increased number of exacerbations during short-term, but not long-term, follow-up,¹⁶ and another study reported that two of three COPD patients with respiratory failure in the treatment group had died.³⁸ Conversely, one study reported that more patients died of respiratory failure in the control group.³⁹ Four studies showed that testosterone therapies decreased gonadotrophin levels compared with controls, as can be expected.^{16 37 39 41} Compared with controls, testosterone therapy was associated with a decrease in the sex hormone-binding globulin level in two studies,^{16 41} and a decrease in the oestradiol level in

men in another study.¹⁶ Finally, few studies showed that testosterone therapy was associated with relative increases in haemoglobin or haematocrit;^{16 37 38} creatinine, aspartate aminotransferase and lactate dehydrogenase values.³⁸

DISCUSSION

Summary of evidence

We have established that men with COPD have significantly lower levels of endogenous TT compared with controls (WMD was -3.21 nmol/L (-5.18 to -1.23)). The size of the mean difference in TT level, which ranks men with COPD in the second quartile (below average) compared with age-matched population norms,⁹ is likely to be clinically relevant. For instance, comparable or greater differences in TT levels between cases and controls have been reported in studies on risk of type 2 diabetes (WMD was -2.66 nmol/L (-3.45 to -1.86)),⁴² metabolic syndrome (WMD was -2.64 nmol/L (-2.95 to -2.32))⁴³ and clinically significant depression (median difference was -1.21 nmol/L, $p<0.001$ for Mann-Whitney test).⁴⁴ These comorbidities have been shown to adversely affect COPD prognosis,^{45–47} and would further complicate COPD management. As the effect of COPD exposure on TT level increased in size after exclusion of lower quality studies and one large sample size study, future higher quality studies will most likely strengthen rather than weaken this evidence base. Collectively, our results and the existing literature indicate that testosterone deficiency should be considered in men with COPD.

On the basis of the limited short-term RCT evidence in predominately male COPD patients, our results suggest that testosterone therapy significantly improves several exercise capacity outcomes. The size of the effect of testosterone therapy that can be expected in practice is small to moderate, but comparable to exercise or PR therapies alone.^{7 8} The effect of testosterone therapy on standardised muscle strength outcomes remained robust after exclusion of one lower quality study, but weakened after exclusion of two placebo only studies. This supports the hypothesis that testosterone therapy with exercise is more effective than testosterone therapy alone for functional improvements.⁴⁸ In addition, our results suggest that the

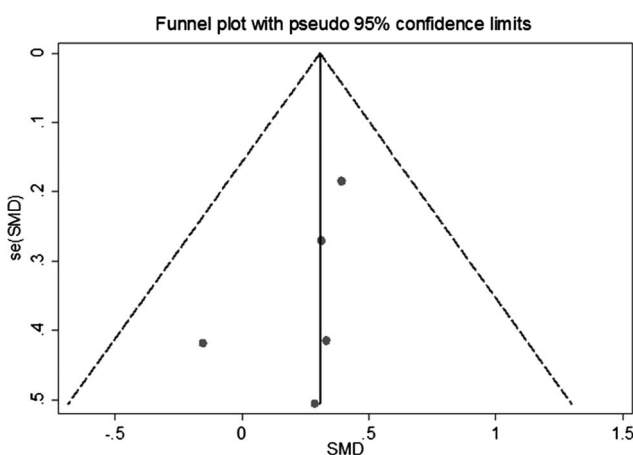


Figure 5 Funnel plot assessing symmetry of standardised mean difference in peak muscle strength outcomes after testosterone treatment between the treatment and control groups for randomised controlled trials.

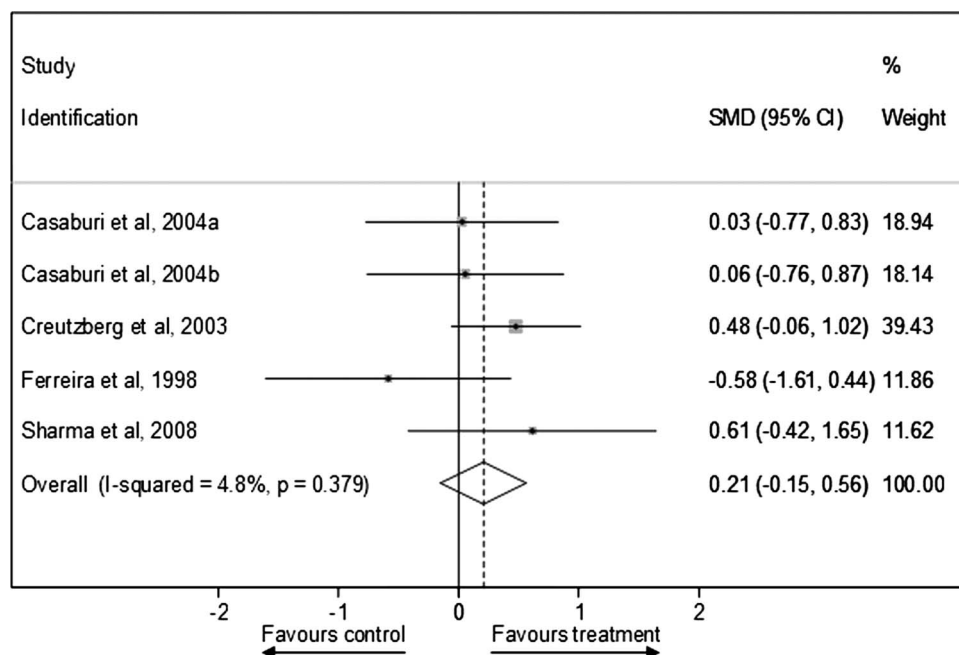


Figure 6 Standardised mean difference in peak VO_2 outcomes after testosterone therapy between the treatment and control groups for randomised controlled trials.

mechanism for improvement in cardiorespiratory fitness assessed by peak workload is most likely explained by better exercise tolerance due to testosterone-induced increases in muscle strength rather than changes in VO_2 .

Limitations

Several limitations require careful consideration. Since only a small number of studies conducted in specific populations were included, the findings of this review may not be relevant to other countries and key groups, which will require further research. In particular, most of the RCTs were conducted in COPD patients without cardiovascular disease and/or diabetes or endocrine disease, which are highly prevalent in this population group.⁴⁶ Second, we replaced missing data points with estimates in some instances, which introduced further

uncertainty. This includes estimating the mean from the median and range and carrying forward the preintervention SD of control groups where the postintervention statistic was not available. Third, because only a few RCTs targeted COPD patients who would have theoretically benefited most from testosterone therapy such as those with low testosterone or body weight,^{16, 37, 39} our estimated effect size for improvement in standardised exercise capacity may have been underestimated. Finally, the reviewer-level limitations include incomplete retrieval of information for several of the 28 citations excluded, as well as the existence of other relevant studies not identified with our search strategy, resulting in selection bias. However, the results and conclusions reported in most of the excluded studies were in line with those reported here, and selection bias was unlikely.

Table 5 Sensitivity analysis of randomised controlled trials on testosterone treatment → cardiorespiratory fitness outcomes meta-analysis

	N studies	N sample	SMD (95% CI)	p Value for heterogeneity
Fixed effects model	5	136	0.21 (-0.13 to 0.56)	0.379
Exclusion of one lower quality study (score <5)	4	120	0.13 (-0.27 to 0.54)	0.315
Exclusion of two placebo only control studies	3	56	0.03 (-0.60 to 0.66)	0.269
Exclusion of one study in men and women	4	120	0.13 (-0.27 to 0.54)	0.315
Exclusion of two longer duration study (≥12 weeks)	3	103	0.27 (-0.12 to 0.67)	0.553
Model using peak workload rather than peak VO_2 outcomes	5	241	0.27 (0.01 to 0.52)	0.741
Model using 6MWT rather than peak VO_2 outcomes	4	184	0.10 (-0.34 to 0.53)	0.210

6MWT, 6 min walking test; N, number; SMD, standardised mean difference.

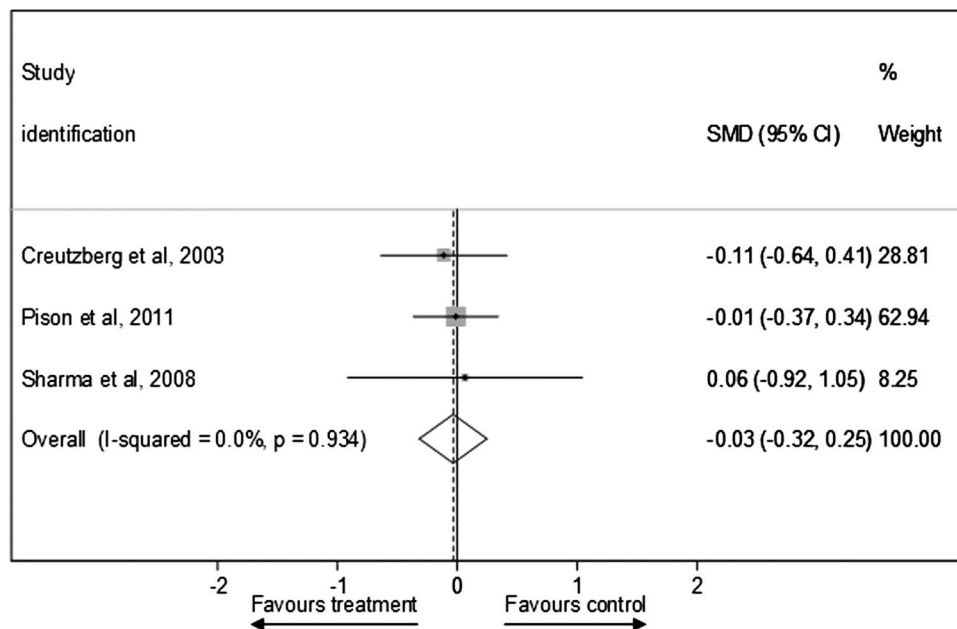


Figure 7 Standardised mean difference in peak health-related quality of life outcomes after testosterone therapy between the treatment and control groups for randomised controlled trials.

Nevertheless, our systematic analysis of the existing literature revealed that there is an absence of sufficient RCT evidence to draw firm conclusions about the long-term benefits and risks of testosterone therapies for exercise capacity and HRQoL outcomes in male or female COPD patients, or about the pharmacological dosing for specific testosterone therapies needed for effectiveness. Reliable information on the efficacy and safety, as well as cost-effectiveness, of specific testosterone therapies is required to inform clinical practice guidelines for COPD. In addition, future high-quality epidemiological research is needed to determine which subgroups of COPD patients are most vulnerable to testosterone deficiency, and to reliably establish whether women with COPD likewise present with significantly lower levels of TT than controls.

CONCLUSIONS

Men with COPD have clinically relevant lower than normal endogenous TT levels, and we believe that our meta-analytic results are sufficiently reliable to recommend that clinicians should consider testosterone deficiency in these patients. Although our results also suggest that testosterone therapy improves several exercise capacity outcomes, there is an absence of sufficient RCT evidence to draw firm conclusions about the long-term benefits and risks of testosterone therapy for exercise capacity and HRQoL outcomes in male or female COPD patients.

Author affiliations

¹School of Nursing and Midwifery, University of Western Sydney, Campbelltown, New South Wales, Australia

²School of Medicine, University of Adelaide, Adelaide, South Australia, Australia

³School of Science and Health, University of Western Sydney, Campbelltown, New South Wales, Australia

⁴School of Medicine, University of Western Sydney, Campbelltown, New South Wales, Australia

⁵Staff Specialist Respiratory and Sleep Physician, Campbelltown, New South Wales, Australia

⁶Division of Experimental Medicine, Centre for Pharmacology and Therapeutics, Imperial College, South Kensington, London, UK

Acknowledgements We are grateful to Mr Geoffrey Lattimore for his work on developing and conducting the electronic database searches.

Contributors EA is the guarantor of the paper, taking responsibility for the integrity of the work as a whole, from inception to published article. He conceived and designed the review, identified studies for inclusion, extracted and interpreted the data, and also drafted the article. PF analysed and interpreted the data, and also revised the article. BC and SS extracted and interpreted the data, and also revised the article. GW interpreted the data and also revised the article. All authors approved the final completed article.

Funding This research received no specific grant from any funding agency in the public, commercial or not-for-profit sectors.

Competing interests EA has entered financial agreements to speak at events for Eli Lilly Australia Pty Ltd (Lilly). BC has received speaking fees and/or conference support from GSK, Novartis and Boehringer Ingelheim. GW has received speaking fees and research support from Bayer; he is on International and National advisory boards and has received research support from Lilly; he has also received consulting fees and research support from Lawley pharmaceuticals.

Provenance and peer review Not commissioned; externally peer reviewed.

Data sharing statement No additional data are available.

Open Access This is an Open Access article distributed in accordance with the Creative Commons Attribution Non Commercial (CC BY-NC 3.0) license, which permits others to distribute, remix, adapt, build upon this work non-commercially, and license their derivative works on different terms, provided the original work is properly cited and the use is non-commercial. See: <http://creativecommons.org/licenses/by-nc/3.0/>

REFERENCES

- Vos T, Flaxman AD, Naghavi M, *et al*. Years lived with disability (YLDs) for 1160 sequelae of 289 diseases and injuries 1990? 2010: a systematic analysis for the Global Burden of Disease Study 2010. *Lancet* 2012;380:2163–96.
- Cazzola M, MacNee W, Martinez FJ, *et al*. Outcomes for COPD pharmacological trials: from lung function to biomarkers. *Eur Respir J* 2008;31:416–69.
- Jones PW. Health status measurement in chronic obstructive pulmonary disease. *Thorax* 2001;56:880–7.
- Marin JM, Cote CG, Diaz O, *et al*. Prognostic assessment in COPD: health related quality of life and the BODE index. *Respir Med* 2011;105:916–21.
- Hamilton AL, Killian KJ, Summers E, *et al*. Muscle strength, symptom intensity, and exercise capacity in patients with cardiorespiratory disorders. *Am J Respir Crit Care Med* 1995;152(6 Pt 1):2021–31.
- Nici L, Donner C, Wouters E, *et al*. American Thoracic Society/ European Respiratory Society statement on pulmonary rehabilitation. *Am J Respir Crit Care Med* 2006;173:1390–413.
- O'Shea SD, Taylor NF, Paratz JD. Progressive resistance exercise improves muscle strength and may improve elements of performance of daily activities for people with COPD: a systematic review. *Chest* 2009;136:1269–83.
- COPD Working Group. Pulmonary rehabilitation for patients with chronic pulmonary disease (COPD): an evidence-based analysis. *Ontario Health Technol Assess Ser* 2012;12:1–75.
- Atlantis E, Martin SA, Haren MT, *et al*. Demographic, physical and lifestyle factors associated with androgen status: the Florey Adelaide Male Ageing Study (FAMAS). *Clin Endocrinol (Oxf)* 2009;71:261–72.
- Jankowska EA, Filippatos G, Ponikowska B, *et al*. Reduction in circulating testosterone relates to exercise capacity in men with chronic heart failure. *J Card Fail* 2009;15:442–50.
- Ravaglia G, Forti P, Maioli F, *et al*. Dehydroepiandrosterone-sulfate serum levels and common age-related diseases: results from a cross-sectional Italian study of a general elderly population. *Exp Gerontol* 2002;37:701–12.
- Kaparianos A, Argyropoulou E, Efremidis G, *et al*. Sex hormone alterations and systemic inflammation in a group of male COPD smokers and their correlation with the +138 insA/delA endothelin-1 gene polymorphism. A case-control study. *Eur Rev Med Pharmacol Sci* 2011;15:1149–57.
- Karadag F, Ozcan H, Karul AB, *et al*. Correlates of erectile dysfunction in moderate-to-severe chronic obstructive pulmonary disease patients. *Respirology* 2007;12:248–53.
- Laghi F, Adiguzel N, Tobin MJ. Endocrinological derangements in COPD. *Eur Respir J* 2009;34:975–96.
- Toma M, McAlister FA, Coglianesi EE, *et al*. Testosterone supplementation in heart failure: a meta-analysis. *Circ Heart Fail* 2012;5:315–21.
- Pison CM, Cano NJ, Cherion C, *et al*. Multimodal nutritional rehabilitation improves clinical outcomes of malnourished patients with chronic respiratory failure: a randomised controlled trial. *Thorax* 2011;66:953–60.
- Katznelson L, Robinson MW, Coyle CL, *et al*. Effects of modest testosterone supplementation and exercise for 12 weeks on body composition and quality of life in elderly men. *Eur J Endocrinol* 2006;155:867–75.
- Pugh PJ, Jones TH, Channer KS. Acute haemodynamic effects of testosterone in men with chronic heart failure. *Eur Heart J* 2003;24:909–15.
- Fernandez-Balsells MM, Murad MH, Lane M, *et al*. Clinical review 1: adverse effects of testosterone therapy in adult men: a systematic review and meta-analysis. *J Clin Endocrinol Metab* 2010;95:2560–75.
- Caminiti G, Volterrani M, Iellamo F, *et al*. Effect of long-acting testosterone treatment on functional exercise capacity, skeletal muscle performance, insulin resistance, and baroreflex sensitivity in elderly patients with chronic heart failure: a double-blind, placebo-controlled, randomized study. *J Am Coll Cardiol* 2009;54:919–27.
- CRD's guidance for undertaking reviews in health care. Centre for Reviews and Dissemination University of York 2008 Published by CRD. 2009.
- Schulz KF, Altman DG, Moher D. CONSORT 2010 statement: updated guidelines for reporting parallel group randomised trials. *BMJ* 2010;340:c332.
- Hozo SP, Djulbegovic B, Hozo I. Estimating the mean and variance from the median, range, and the size of a sample. *BMC Med Res Methodol* 2005;5:13.
- Higgins JPT, Green S. Cochrane handbook for systematic reviews of interventions version 5.1.0 [updated March 2011]. *Cochrane Collaboration* 2011. <http://www.cochrane-handbook.org> [serial on the Internet].
- DerSimonian R, Laird N. Meta-analysis in clinical trials. *Control Clin Trials* 1986;7:177–88.
- Higgins JP, Thompson SG, Deeks JJ, *et al*. Measuring inconsistency in meta-analyses. *BMJ* 2003;327:557–60.
- Higgins JP, Thompson SG. Quantifying heterogeneity in a meta-analysis. *Stat Med* 2002;21:1539–58.
- Egger M, Davey Smith G, Schneider M, *et al*. Bias in meta-analysis detected by a simple, graphical test. *BMJ* 1997;315:629–34.
- Gow SM, Seth J, Beckett GJ. Thyroid function and endocrine abnormalities in elderly patients with severe chronic obstructive lung disease. *Thorax* 1987;42:520–5.
- Semple PD, Beastall GH, Watson WS, *et al*. Hypothalamic-pituitary dysfunction in respiratory hypoxia. *Thorax* 1981;36:605–9.
- Bratel T, Wennlund A, Carlstrom K. Impact of hypoxaemia on neuroendocrine function and catecholamine secretion in chronic obstructive pulmonary disease (COPD). Effects of long-term oxygen treatment. *Respir Med* 2000;94:1221–8.
- Iqbal F, Michaelson J, Thaler L, *et al*. Declining bone mass in men with chronic pulmonary disease. Contribution of glucocorticoid treatment, body mass index, and gonadal function. *Chest* 1999;116:1616–24.
- Hsu AH, Chen DY, Lee JJ. Serum testosterone levels in patients with chronic obstructive pulmonary disease. *Tzu Chi Med J* 2006;18:113–20+62.
- Svartberg J, Schirmer H, Medbo A, *et al*. Reduced pulmonary function is associated with lower levels of endogenous total and free testosterone. The Tromso study. *Eur J Epidemiol* 2007;22:107–12.
- Van Vliet M, Spruit MA, Verleden G, *et al*. Hypogonadism, quadriceps weakness, and exercise intolerance in chronic obstructive pulmonary disease. *Am J Respir Crit Care Med* 2005;172:1105–11.
- Global Initiative for Chronic Obstructive Lung Disease. Global strategy for the diagnosis, management, and prevention of chronic obstructive pulmonary disease (revised 2011). 2011 <http://www.goldcopd.org/>.
- Casaburi R, Bhasin S, Cosentino L, *et al*. Effects of testosterone and resistance training in men with chronic obstructive pulmonary disease. *Am J Respir Crit Care Med* 2004;170:870–8.
- Creutzberg EC, Wouters EF, Mostert R, *et al*. A role for anabolic steroids in the rehabilitation of patients with COPD? A double-blind, placebo-controlled, randomized trial. *Chest* 2003;124:1733–42.
- Ferreira IM, Verreschi IT, Nery LE, *et al*. The influence of 6 months of oral anabolic steroids on body mass and respiratory muscles in undernourished COPD patients. *Chest* 1998;114:19–28.
- Sharma S, Arneja A, McLean L, *et al*. Anabolic steroids in COPD: a review and preliminary results of a randomized trial. *Chron Respir Dis* 2008;5:169–76.
- Svartberg J, Aasebo U, Hjalmarson A, *et al*. Testosterone treatment improves body composition and sexual function in men with COPD, in a 6-month randomized controlled trial. *Respir Med* 2004;98:906–13.
- Ding EL, Song Y, Malik VS, *et al*. Sex differences of endogenous sex hormones and risk of type 2 diabetes: a systematic review and meta-analysis. *JAMA* 2006;295:1288–99.
- Brand JS, Van Der Tweel I, Grobbee DE, *et al*. Testosterone, sex hormone-binding globulin and the metabolic syndrome: a systematic review and meta-analysis of observational studies. *Int J Epidemiol* 2011;40:189–207.
- Almeida OP, Yeap BB, Hankey GJ, *et al*. Low free testosterone concentration as a potentially treatable cause of depressive symptoms in older men. *Arch Gen Psychiatry* 2008;65:283–9.
- Atlantis E, Fahey P, Cochrane B, *et al*. Bidirectional associations between clinically relevant depression or anxiety and chronic obstructive pulmonary disease (COPD): a systematic review and meta-analysis. *Chest* 2013. [Epub ahead of print] doi:10.1378/chest.12-1911.
- Almagro P, Cabrera FJ, Diez J, *et al*. Comorbidities and short-term prognosis in patients hospitalized for acute exacerbation of COPD. The ESMI study. *Chest* 2012;142:1126–33.
- Kupeli E, Ulubay G, Ulasli SS, *et al*. Metabolic syndrome is associated with increased risk of acute exacerbation of COPD: a preliminary study. *Endocrine* 2010;38:76–82.
- Guo W, Wong S, Li M, *et al*. Testosterone plus low-intensity physical training in late life improves functional performance, skeletal muscle mitochondrial biogenesis, and mitochondrial quality control in male mice. *PLoS ONE* 2012;7:e51180.

BMJ Open

Endogenous testosterone level and testosterone supplementation therapy in chronic obstructive pulmonary disease (COPD): a systematic review and meta-analysis

Evan Atlantis, Paul Fahey, Belinda Cochrane, Gary Wittert and Sheree Smith

BMJ Open 2013 3:
doi: 10.1136/bmjopen-2013-003127

Updated information and services can be found at:
<http://bmjopen.bmj.com/content/3/8/e003127>

These include:

- Supplementary Material** Supplementary material can be found at:
<http://bmjopen.bmj.com/content/suppl/2013/08/09/bmjopen-2013-003127.DC1.html>
- References** This article cites 44 articles, 14 of which you can access for free at:
<http://bmjopen.bmj.com/content/3/8/e003127#BIBL>
- Open Access** This is an Open Access article distributed in accordance with the Creative Commons Attribution Non Commercial (CC BY-NC 3.0) license, which permits others to distribute, remix, adapt, build upon this work non-commercially, and license their derivative works on different terms, provided the original work is properly cited and the use is non-commercial. See: <http://creativecommons.org/licenses/by-nc/3.0/>
- Email alerting service** Receive free email alerts when new articles cite this article. Sign up in the box at the top right corner of the online article.

Topic Collections Articles on similar topics can be found in the following collections

- [Evidence based practice](#) (377)
- [Respiratory medicine](#) (210)

Notes

To request permissions go to:
<http://group.bmj.com/group/rights-licensing/permissions>

To order reprints go to:
<http://journals.bmj.com/cgi/reprintform>

To subscribe to BMJ go to:
<http://group.bmj.com/subscribe/>