

PUBLISHED VERSION

Elgendi M, Picon F, Magnenat-Thalmann N, Abbott D. **Arm movement speed assessment via a Kinect camera: A preliminary study in healthy subjects.** BioMedical Engineering Online 13(88):1-14 Article number ARTN 88 2014

© 2014 Elgendi et al.; licensee BioMed Central Ltd. This is an Open Access article distributed under the terms of the Creative Commons Attribution License (<http://creativecommons.org/licenses/by/4.0>), which permits unrestricted use, distribution, and reproduction in any medium, provided the original work is properly credited. The Creative Commons Public Domain Dedication waiver (<http://creativecommons.org/publicdomain/zero/1.0/>) applies to the data made available in this article, unless otherwise stated

PERMISSIONS

<http://creativecommons.org/licenses/by/4.0>



This is a human-readable summary of (and not a substitute for) the [license](#).

[Disclaimer](#)



You are free to:

Share — copy and redistribute the material in any medium or format

Adapt — remix, transform, and build upon the material

for any purpose, even commercially.

The licensor cannot revoke these freedoms as long as you follow the license terms.

17 October, 2014

<http://hdl.handle.net/2440/84449>

RESEARCH

Open Access

Arm movement speed assessment via a Kinect camera: A preliminary study in healthy subjects

Mohamed Elgendi^{1*}, Flavien Picon², Nadia Magnenat-Thalmann² and Derek Abbott³

*Correspondence:

moe.elgendi@gmail.com

¹Department of Computing
Science, University of Alberta, 2-32
Athabasca Hall, T6G 2E1 Edmonton,
Canada

Full list of author information is
available at the end of the article

Abstract

Background: Many clinical studies have shown that the arm movement of patients with neurological injury is often slow. In this paper, the speed of arm movements in healthy subjects is evaluated in order to validate the efficacy of using a Kinect camera for automated analysis. The consideration of arm movement appears trivial at first glance, but in reality it is a very complex neural and biomechanical process that can potentially be used for detecting neurological disorders.

Methods: We recorded hand movements using a Kinect camera from 27 healthy subjects (21 males) with a mean age of 29 years undergoing three different arbitrary arm movement speeds: fast, medium, and slow.

Results: Our developed algorithm is able to classify the three arbitrary speed classes with an overall error of 5.43% for interclass speed classification and 0.49% for intraclass classification.

Conclusions: This is the first step toward laying the foundation for future studies that investigate abnormality in arm movement via use of a Kinect camera.

Keywords: Hand speed analysis, Kinect, Physiological movement

Introduction

Slowness in arm movement is common in many disorders, such as Huntington's chorea [1], Parkinson's disease [2], and cerebellar diseases [3]. However, the abnormality in arm movement varies from one disease to another. Given the vast array of disorders associated with abnormal movements, the challenge for the rehabilitation community is in obtaining high-quality evaluations at low cost.

Kinect cameras offer extremely inexpensive accurate information for sensitive motion tracking [4]. Moreover, the Kinect camera is also considered as a promising tool for the investigation of tremor and slowness in arm movements [5]. To our knowledge, there are no studies that investigate the speed of arm movement joints for detecting abnormality in arm movements using the Kinect camera or any other depth camera. However, several arm movement recognition systems have considered speed as a feature. Min et al. [6] confirmed that arm movement recognition is usually dependent on the trajectory of arm movements, and that position, speed, and curvature are useful features. Campbell et al. [7] investigated 10 different features for arm movement recognition using a Hidden Markov Model. They indicated that speed features are superior to positional features. Yoon et al. [8] used hand speed as an important feature for arm movement recognition.

Other researchers estimated the speed of arm movement using an accelerometer, for example, Rehm et al. [9] used the power of the accelerometer as a feature to classify arm movements into low- and high- speed regimes, not for diagnostic purposes. However, a recent clinical study by Howard et al. [10] explored spatial and temporal changes in shoulder motion in both asymptomatic healthy adults and rotator cuff patients with different speeds of movement by using a scapular tracking device. In contrast to those studies, in this paper we systematically explore the speed of arm movement joints with the aim of improving the classification of arm movement speed in healthy subjects. Our study builds upon Rehm's and Howard's work by providing a device-free analysis of arm movement, exploring the impact of different joints on the overall arm movement, and validating the system in a noisy environment.

Materials and methods

Ethics statement

No film recordings of subjects were made in this study. The Kinect camera provided numerical data that directly related to hand movements. Only de-identified numerical data; representing motion vectors, were stored in the database. Volunteers were researchers at the office of the Institute for Media Innovation, Nanyang Technological University, Singapore. All data are available at <http://www3.ntu.edu.sg/imi/piconflavien/autres/data-speed-arm.zip> and <http://www.elgendi.net/databases.htm>.

Data collection

There are currently no standard Kinect databases for arm movement analysis available to evaluate our developed algorithm. However, the Institute of Media Innovation at Nanyang Technological University has one database that contains arm movement data of 27 healthy volunteers (6 females and 21 males) with a mean \pm standard deviation (SD) age of 29.7 ± 4.1 years, height of $172.9 \text{ cm} \pm 9.3 \text{ cm}$, and arm length of $71.3 \text{ cm} \pm 5.2 \text{ cm}$. Two of these volunteers were left-handed. The motion vectors were measured using a Kinect camera located 2.7 m away from the subject at a height of 1.2 m above the floor, cf. Figure 1. All Kinect data are acquired using Microsoft Kinect SDK Beta 1 (Microsoft, 2012) at a sampling frequency of 30 Hz. The Kinect device consists of a laser light source, color camera, and an infrared camera. The infrared laser source and the infrared video camera form the depth camera function, while the color video camera provides color data to the depth map. The technology was developed by PrimeSense (Tel-Aviv, Israel) and is disclosed in detail in their patents [11].

During the experiment, the body of the subject faced the sensor with an angle of 45° to the right of the Kinect sensor (as seen in Figure 1). The reason behind the 45° angle is to prevent the arm joints from intersecting with the body joints, as shown in Figure 2. This generates reliable arm motion in order to study the impact of each joint of the arm on the overall speed of the right arm movement more precisely. These collected arm movements were used as a benchmark for effective speed detection of an arm movement. Measurements were taken with each subject standing vertically, with an initial position where both arms were extended along the sides of the body. Then, the subject was asked to raise his/her dominant arm. Each subject performed three sets of trials: 'slow', 'normal', and 'fast'; with five arm movements for each set. Therefore, the number of recorded movements was 405 (27 subjects \times 5 movements \times 3 speeds).



Figure 1 Experimental Setup: the user faced the camera at an angle of 45° to the right of the sensor. Every arm movement was recorded at a fixed 2.7 m distance from the camera where the Kinect camera was placed at a height of 1.2 m above the floor.

For the slow movement, the subject was instructed to raise an arm as if a heavy weight was being lifted. While the three speed classes in this study were largely arbitrary, the aim was merely to demonstrate that we can achieve automatic classification of these arbitrary classes via the Kinect system. If arbitrary speed classes can be successfully distinguished, then future studies that classify the motion of healthy subjects (fast) versus those with a

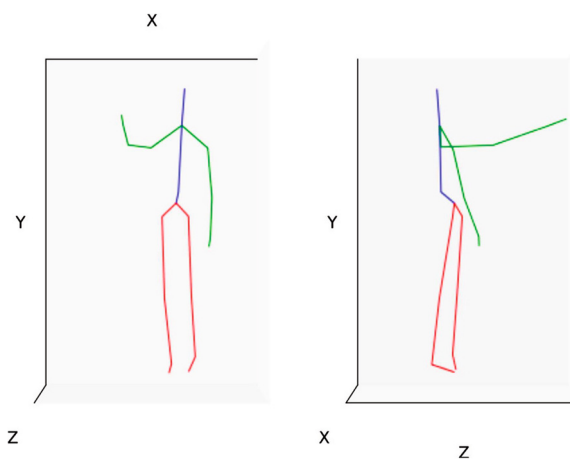


Figure 2 Front and lateral view of a subject computed from the Kinect sensor data. This plot represents the middle of the motion and was traced using Python 2.7 and the plotting module Matplotlib 1.1.0 [12]. The instantaneous velocity is calculated using the x, y, and z coordinates shown in the figure. The green lines represent arms, red represents legs, and blue represents the torso.

disorder, such as bradykinesia (slow), can be plausibly carried out using the Kinect system. Capturing the arm movement was carried out manually. In other words, the subjects waited for a signal from the recording person to start their movement and then they maintained their arm in the up position until they received a signal to return their arm to the initial position. Each recording was played back, checked, and annotated as being in one of three classes 'slow', 'normal', or 'fast'. Two independent annotators decided the speed category of each recorded movement; when two annotators disagreed, the result was discarded and the subject was asked to repeat the experiment. The annotations were stored in a file to be compared automatically later with the speed features that will be discussed in the next section.

Methodology

The proposed arm movement classification type algorithm consists of three main stages: pre-processing (resultant of coordinates as instantaneous velocity and low-pass filtering), feature extraction (calculating the first and second derivative and their mean and SD), and classification (thresholding). The structure of the algorithm is shown in Figure 3.

Pre-processing

The Kinect body tracking software API provides the real-time position of the body joints of each user [13]. Even though we focused mainly on the skeletal joints of the arm, we chose to record the positions of all skeletal joints—center of gravity or leg movements are also potential speed indicators. With 20 joints and 3 floating point values (real numbers) representing the x , y , and z positions for each joint, each motion frame was expressed as a 60-element vector. The recorded joints covered all parts of the body, but we focused mainly on the arm joints: shoulder, elbow, wrist, and hand. Since the features only rely on the dynamics of the motion, there are no differences in processing data from the left or right arm. Therefore, we processed data from the joints of each subject's dominant arm (25 right-handed and 2 left-handed).

The three-dimensional (3D) position (x, y, z) of a joint is expressed in the coordinate system of the Kinect camera and the units are in meters [14]. Again, the selected features rely on motion dynamics so our system is view-independent, i.e., we do not have to express the positions in the coordinate system of the subject's body. The dynamic of each joint is computed using the variation of position of the joint over time. In the first step, each joint motion, each joint motion sequence of 3D positions, is replaced by the

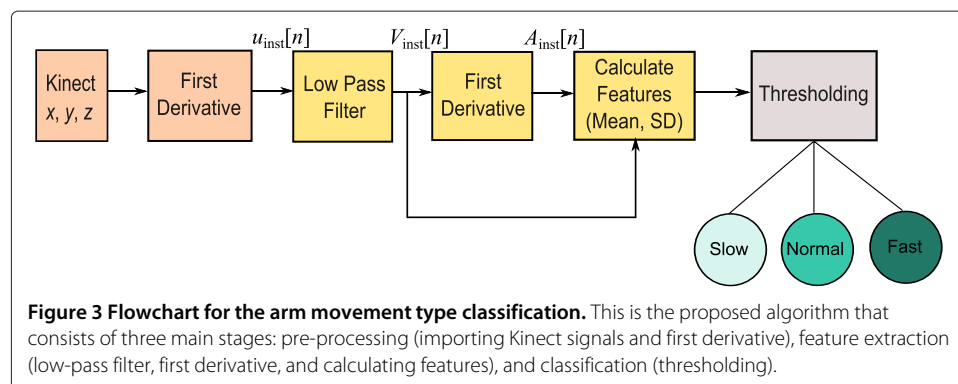


Figure 3 Flowchart for the arm movement type classification. This is the proposed algorithm that consists of three main stages: pre-processing (importing Kinect signals and first derivative), feature extraction (low-pass filter, first derivative, and calculating features), and classification (thresholding).

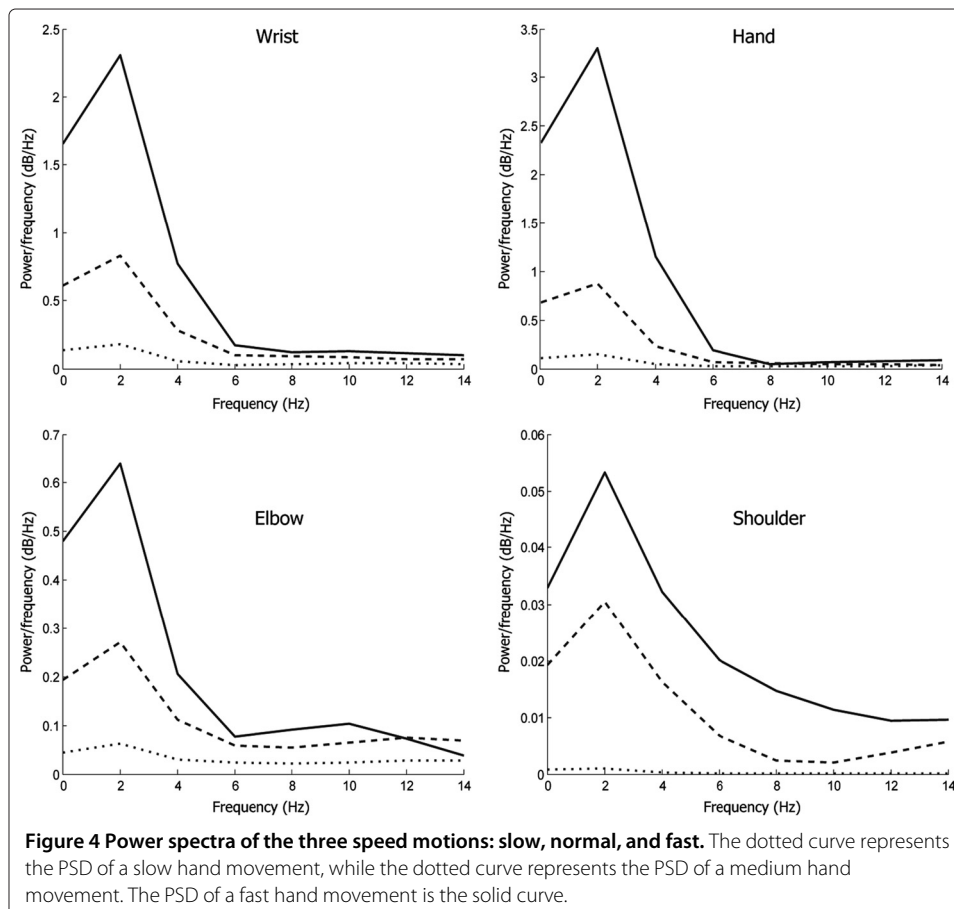
distance between each frame as in Eq. 1. In Figure 2, the $x, y,$ and z coordinates are the position vectors of a particular joint that varies from 0 to n , where n is the number of frames in a performed motion. The instantaneous velocity of motion for a particular joint is calculated as the resultant of $x, y,$ and z positions over all frames that represent a motion. The instantaneous velocity (u_{inst}) for a given 3D motion is computed as follows:

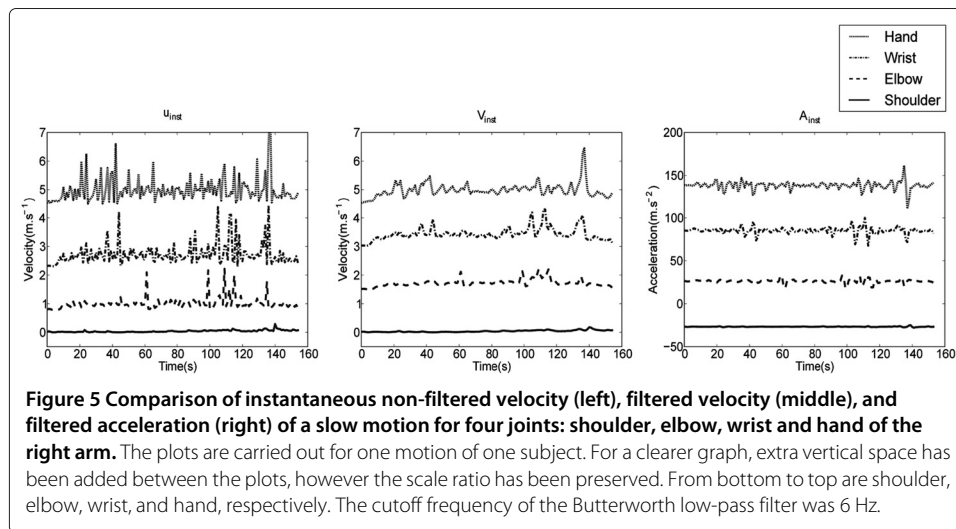
$$u_{inst}[n] = \left. \frac{dx, y, z}{dt} \right|_{t=nT}$$

$$= \frac{1}{T} \sqrt{(x[n] - x[n - 1])^2 + (y[n] - y[n - 1])^2 + (z[n] - z[n - 1])^2}, \quad (1)$$

where T is the sampling interval and equals the reciprocal of the sampling frequency and n is the number of motion data points.

As shown in Figure 4, the informative part of the motion lies below 6 Hz for all joints with different speed types. Thus, a low-pass filter was applied. A first-order, zero-phase bidirectional, Butterworth low-pass filter with cutoff frequency of 6 Hz was implemented. Figure 5 shows an example of the original data u_{inst} at the top left and the filtered data (V_{inst}) at the top right with no phase distortion. Note that the low frequencies play a major role in identifying hand movement speed and ultimately hand tremors. The first-order filter was selected to avoid over-smoothing the acquired motion. This was carried out





empirically to find a condition where the substantial part of the motion was preserved while sensor errors were strongly reduced. We decided to record the raw data, i.e., without using the pre-defined filter provided in the Kinect SDK. By doing so, we have more control over the data analysis. We then have freedom to examine the effect of filtering on the classification rate.

Feature extraction

Before continuing the discussion of the joint signals, it is important to know which features can be extracted from a hand movement. In the literature, instantaneous velocity and acceleration have been used in diagnosing arm movements. Almeida et al. [15] examined individuals with Parkinson's disease through the analysis of upper-limb movement at different movement frequencies and with different external timing conditions using instantaneous velocity. However, investigators [16,17] used instantaneous velocity and acceleration to investigate the movements of the finger, elbow, and shoulder during speed-aiming movements. In this paper, two features were investigated: instantaneous velocity and acceleration. The mathematical definition of instantaneous velocity (u_{inst}) in 3D motion before filtering is described in Eq. 1, while instantaneous acceleration (A_{inst}) is defined as:

$$A_{inst}[n] = \left. \frac{dV_{inst}}{dt} \right|_{t=nT} = \frac{1}{T} (V_{inst}[n] - V_{inst}[n-1]). \quad (2)$$

Although the Kinect camera is receiving increased attention, it nevertheless suffers from noise, low resolution sensors, lack of color information, and occlusion problems [18]. Therefore, it is crucial that we filter the signal to improve the classification accuracy, especially if the main goal is to determine the speed type. In our study, we computed the instantaneous velocity and instantaneous acceleration for each arm joint. Then, we calculated the following measures: average (f_1, f_3) and SD (f_2, f_4). Two features $\{f_1, f_2\}$

are extracted from the velocity V_{inst} and two features $\{f_3, f_4\}$ are extracted from the acceleration A_{inst} . Features f_1, f_2, f_3 , and f_4 are calculated as follows:

$$f_1 = (1/N) \sum_{n=1}^N V_{\text{inst}}[n], \quad (3)$$

$$f_2 = \sqrt{(1/N) \sum_{n=1}^N (V_{\text{inst}}[n] - f_1)^2}, \quad (4)$$

$$f_3 = (1/N) \sum_{n=1}^N A_{\text{inst}}[n], \quad (5)$$

$$f_4 = \sqrt{(1/N) \sum_{n=1}^N (A_{\text{inst}}[n] - f_3)^2}, \quad (6)$$

where N refers to the total number of samples in the processed motion.

Figure 5 demonstrates the signal shape of four different joints of an arm movement based on the instantaneous velocity and acceleration. This is particularly interesting as it confirms that joints of the same limb have the same dynamics, especially for the hand and wrist signals. As the variance of the hand and wrist joint signals are somewhat higher compared to the elbow and shoulder signals, it is expected that the hand or the wrist signal will potentially attain higher accuracy in the classification of arm movements.

Classification

In this section, we checked the linear separability of the calculated feature set $f = \{f_1, f_2, f_3, f_4\}$ in both filtered and non-filtered signals. The classification steps are described in the following paragraphs.

For each subject used as a test dataset, the thresholds and the error were reported, cf. Table 1. In this table only the results from the most relevant features were selected: mean and SD of the instantaneous velocity of the hand $\{f_1, f_2\}$. The results in the table show that the thresholds are quite similar for the different training datasets. There are also some subjects for whom the classification error is fairly high. These errors come from the strict separation provided by the thresholds. The first classifier is fast/medium against slow (THR_1), while the second classifier is fast against medium/slow (THR_2).

Figure 6 demonstrates the threshold determination for inter- and intraclass speed classification. The two valleys reflect the thresholds that will be used for training the automatic speed detection. For example, for the intraclass speed classification, the slow-medium threshold was 0.58 while the medium-fast threshold was 1.50 in the non-filtered condition as shown in Figure 6 (left).

Results and discussion

Advances in microelectromechanical systems allow measurement of the changes in velocity, position, and acceleration by enabling low-cost sensors, accelerometers, and gyroscopes. These sensors have been employed to analyze arm movement disorders.

In the literature, essential tremor typically has a frequency of 4–8 Hz when it is assessed by microelectromechanical systems, such as accelerometers [19]; however, our analysis

Table 1 Leave-one-out (LOO) cross-validation results for the best feature for intra- and interclass for the hand joint speed analysis

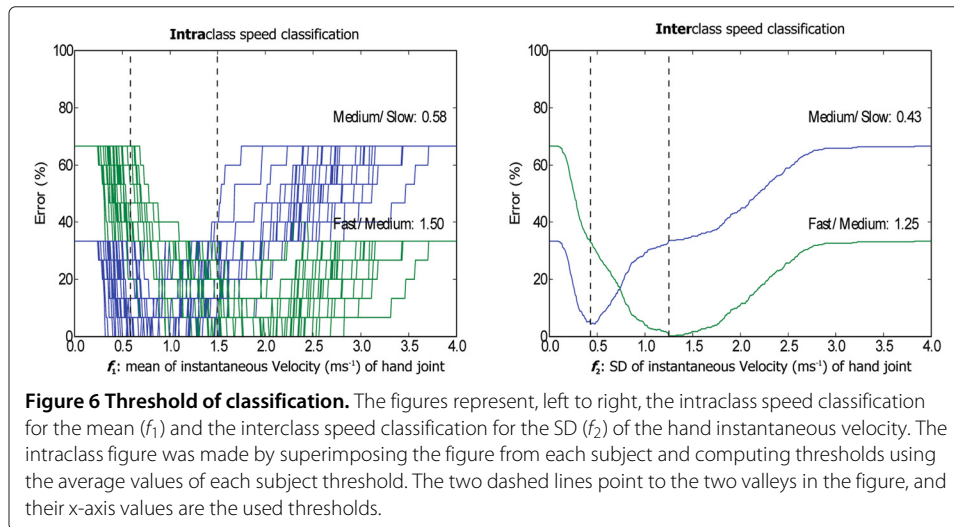
LOO step	Intraclass Non-Filtered f_1			Interclass Filtered f_2		
	THR ₁	THR ₂	Error (%)	THR ₁	THR ₂	Error (%)
1	0.57	1.47	53.33	0.43	1.25	6.66
2	0.57	1.48	60.00	0.43	1.25	0.00
3	0.56	1.48	53.33	0.43	1.25	6.66
4	0.58	1.47	26.66	0.43	1.25	0.00
5	0.59	1.52	20.00	0.47	1.25	40.00
6	0.58	1.51	13.33	0.43	1.25	0.00
7	0.59	1.51	0.00	0.48	1.25	13.33
8	0.59	1.51	0.00	0.43	1.25	20.00
9	0.58	1.50	6.66	0.43	1.25	0.00
10	0.58	1.49	13.33	0.43	1.25	0.00
11	0.58	1.49	6.66	0.47	1.25	13.33
12	0.57	1.50	13.33	0.43	1.25	13.33
13	0.58	1.48	13.33	0.43	1.25	6.66
14	0.57	1.48	66.66	0.43	1.25	0.00
15	0.58	1.47	20.00	0.43	1.25	0.00
16	0.58	1.49	26.66	0.43	1.25	6.66
17	0.58	1.50	6.66	0.43	1.25	0.00
18	0.58	1.50	13.33	0.43	1.25	6.66
19	0.59	1.50	0.00	0.43	1.25	6.66
20	0.58	1.50	0.00	0.43	1.25	0.00
21	0.58	1.49	6.66	0.43	1.25	0.00
22	0.58	1.50	0.00	0.43	1.25	0.00
23	0.58	1.49	0.00	0.43	1.25	6.66
24	0.57	1.50	33.33	0.43	1.25	6.66
25	0.59	1.50	0.00	0.43	1.25	0.00
26	0.58	1.48	20.00	0.43	1.25	0.00
27	0.57	1.49	53.33	0.43	1.25	6.66

The best feature for intra- and interclass analysis was selected based on the overall joints analysis shown in Table 1. Each LOO step means one subject is excluded from testing and the training was carried out over the remaining 26 subjects. The results of testing are displayed in the error column.

shows frequencies that lie below 6 Hz are more informative for arm-speed assessment using using a Kinect camera.

The statistical Kruskal-Wallis and analysis of variance (ANOVA) tests allow us to investigate whether the hand-movement speed feature takes different values among the three speed classes. In the case of interclass analysis for non-filtered/filtered f_1 , $p < 0.00001$ was scored by the ANOVA test, while the the Kruskal-Wallis test showed significance with $p < 0.01$. On the other hand, for the intraclass analysis for filtered f_2 , $p < 0.000001$ was scored by the ANOVA test, while the Kruskal-Wallis test showed significance with $p < 0.01$.

In the case of interclass speed analysis, low p -values ($p < 0.00000001$) were scored for both tests, which indicate a large difference in the means and medians of the three speed classes. Both tests found that the three hand-movement speeds are



significantly different in the case of filtered and non-filtered features. The very small p -value indicates that differences between the three speed classes are highly significant.

In Table 2, as expected, the hand joint was successfully classified into different speed types with the lowest error rate (0.49% for intra-classification and 5.43% for inter-classification). This result confirms the observation, shown in Figure 5, that the mean of the instantaneous velocity for the hand motion contains more information compared to the other three joints in both cases of filtered and un-filtered data. As can be seen, the hand joint is the most reliable for detecting speed in an arm movement. It is interesting to note that features based on the SD perform better than those based on the

Table 2 Error rates for non-filtered and filtered arm movement signals

		Hand				Wrist			
		f_1	f_2	f_3	f_4	f_1	f_2	f_3	f_4
		error(%)	error(%)	error(%)	error(%)	error(%)	error(%)	error(%)	error(%)
Intra	Non-filtered	0.49	0.98	58.27	24.69	1.48	4.44	55.80	31.85
	Filtered	0.49	2.46	58.27	11.35	1.48	4.44	55.80	15.55
Inter	Non-filtered	8.39	6.41	60.74	30.86	10.37	12.34	58.02	41.97
	Filtered	8.39	5.43	60.74	22.71	10.86	9.38	58.02	26.17
		Elbow				Shoulder			
		f_1	f_2	f_3	f_4	f_1	f_2	f_3	f_4
		error(%)	error(%)	error(%)	error(%)	error(%)	error(%)	error(%)	error(%)
Intra	Non-filtered	1.48	6.41	53.82	21.72	4.44	11.60	36.04	12.83
	Filtered	1.48	5.18	53.82	11.85	4.44	11.85	36.04	15.30
Inter	Non-filtered	11.35	17.53	51.60	34.32	27.40	31.35	38.51	33.58
	Filtered	11.35	14.56	51.60	27.90	27.40	31.11	38.51	32.09

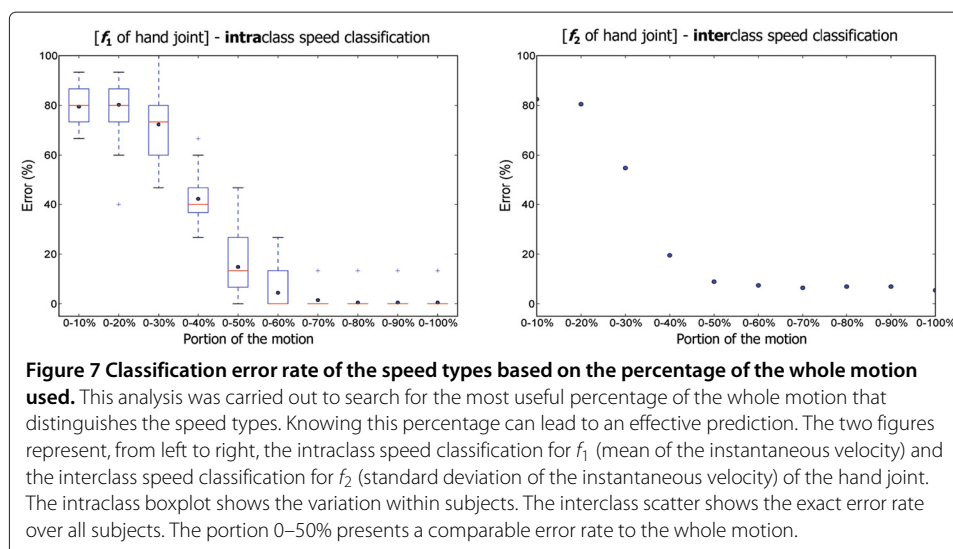
Classification error was calculated within (intra) and between (inter) speed classes. For the intraclass speed classification, the lowest error was achieved by either non-filtered or filtered of feature f_1 (error of 0.49%), while the lowest error achieved for the interclass speed classification was 5.43% by filtered feature f_1 . Feature filtration is done using a Butterworth low-pass filter with a cutoff frequency of 6 Hz.

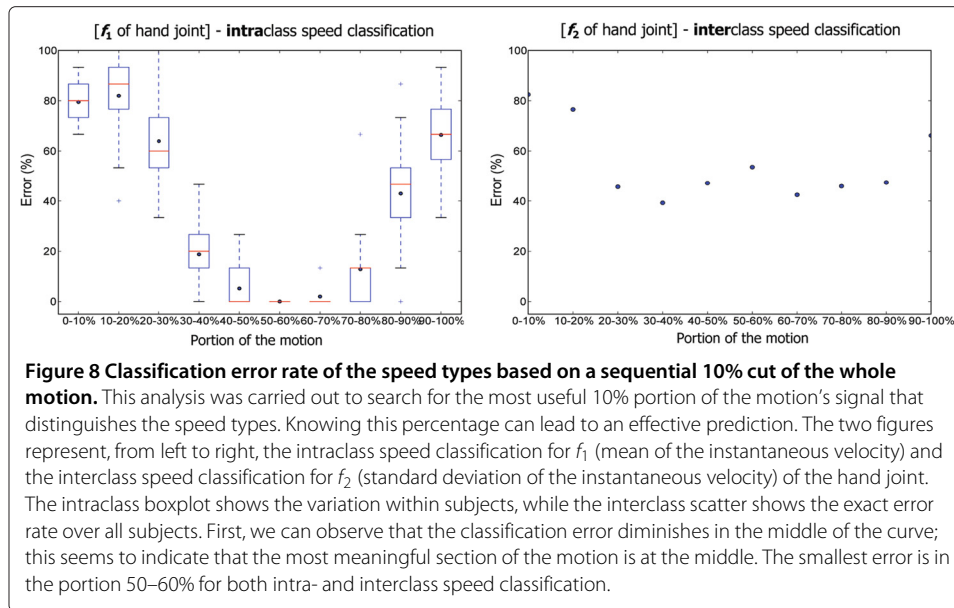
mean. Interestingly, the results of filtered and non-filtered hand-joint signals are relatively close. However, the filtered hand-joint signal scored a slightly lower classification error compared to the non-filtered signal.

Is it possible to predict the speed type before the completion of a full hand movement? To answer this, we investigated the percentage of the hand movement from the start of the motion that contributes the most to the classification error. The results of this investigation are shown in Figure 7. For the inter-classification, the first 50% of the f_2 feature provided an 8.8% classification error. While in the intraclass speed classification, the error rate scored by the first 60% was 4.4% using the f_1 feature. This is an interesting observation as the first 50% of a motion provides low classification error and is relatively close in terms of performance to the whole motion. Knowing this fact can lead to an effective prediction, which can be carried out in real time without waiting for the whole motion to be completed. What portion of a hand-movement signal contributes the most to the classification error? Which 10% portion of the motion's signal contains the most useful information to distinguish the speed types?

Figure 8 shows the error rate for a sequential 10% of the motion signals. It can be seen that in the case of interclass speed classification, the portion that is 50–60% of the mean of the hand instantaneous velocity provides the lowest error rate of 6.4%. This is intuitive as the beginning of motion is the phase where each subject reaches a certain pose. Moreover, the intraclass analysis shows that a 0% error rate can be achieved if the 50–60% portion of the mean of the instantaneous velocity is used instead of the whole hand movement. This confirms that the main characteristics of a movement are determined within 50–60% and can be used for analysis or/and prediction. The new results offer a more direct path toward translation for clinical purposes than Bergmann et al. [20] as well as a simpler and therefore a more robust method for classification.

Studies investigating speed–amplitude relations in those with Parkinson's disease suggest that for any given movement amplitude, the velocity is reduced [21-23]. Thus, the amplitude of the time-domain representation is used to indicate abnormal movement [24]. Interestingly, the consistent finding was the frequency power dependence of the



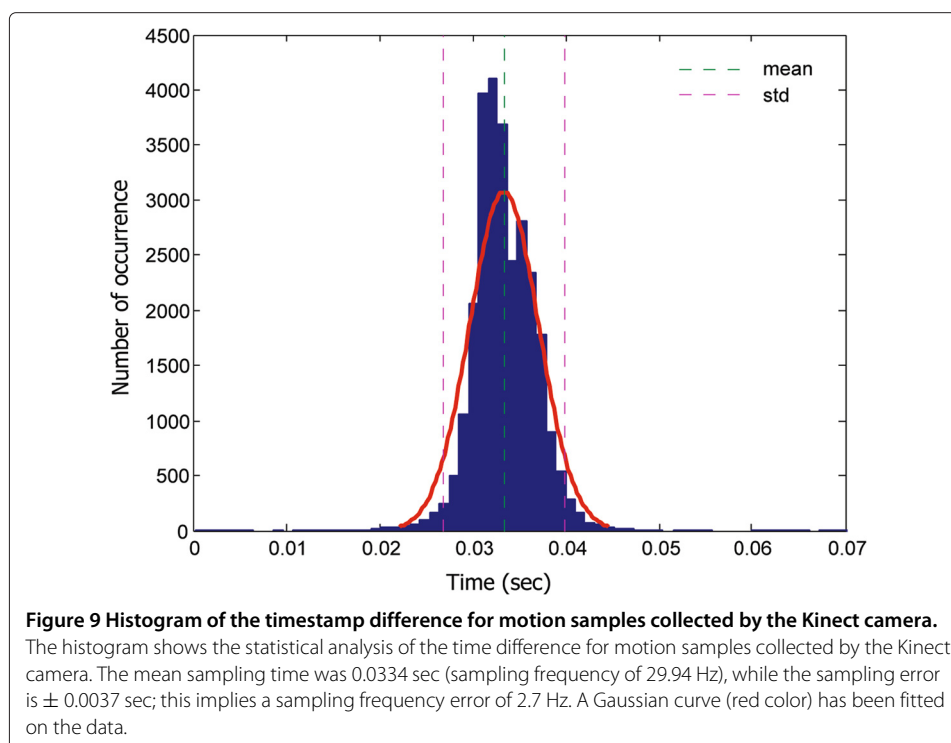


speed of the fastest voluntary efforts; the greater the frequency power, the faster the contraction, as shown in Figure 4 in which the solid lines refer to a large frequency power associated with fast joint movements. This suggests a new indicator for abnormalities, such as bradykinesia or Parkinson's, and the Kinect system is sensitive enough to provide classification of a joint speed.

Limitations of study and future work

In this study, mimicking unhealthy motion provided initial validation of the system—this is a necessary step before assessment of real patients at a hospital/clinic. Thus, we recommend that future work examine our method on patients that suffer from hand tremor as the thresholds calculated in this study are based on healthy subjects. A larger sample size and a diverse set of tremor movements are needed in order to generalize the findings of this study. To our knowledge, there is no available Kinect database with measurements from patients with hand tremor. In future studies it may be advisable to test the optimal distance for positioning the Kinect camera as sometimes subjects cannot be detected if they are relatively close to the camera. It would also be useful to know how accurately the Kinect camera can estimate speed of an arm movement compared to the speed of an arm movement with a benchmark standard (such as a 3D analysis system, e.g., Vicon, Optitrak, etc.). Perhaps combining all the features together to build a single classifier to separate speed classes can be carried out in the future.

Figure 9 shows that the sampling rate of the Kinect camera is relatively unstable; It fluctuates between 26.95 Hz and 33.67 Hz rather than sampling the data at a consistent frequency of 30 Hz. Our results show that this is not an issue unless high-frequency analysis is needed, which is not the main concern of our study. However, the use of smoothing techniques decreases the impact of sensor instability. In cases where greater sampling stability is required, future studies can consider modifying the hardware with a more stable frequency source.



We developed a real-time system that uses 50–60% of the hand movement. However, further investigations with subjects possessing abnormal hand speeds are needed. Exploring simple features, such as the mean and SD of the motion, is promising in terms of computational complexity and efficiency. However, this can be further improved by investigating other features in the time and frequency domains. Thresholds provide a strict separation between the data; the resulting misclassification can potentially be reduced by introducing an acceptance interval around the threshold values.

Conclusion

In this paper we presented a speed analysis of arm movement. Results show that 1) instantaneous velocity provides more reliable classification compared to instantaneous acceleration, 2) the mean is a better feature compared to the standard deviation for instantaneous velocity, and 3) the hand joint is the most efficient joint for speed detection in arm motion. Moreover, a low-pass filter improves the interclass speed classification but has no effect on the intraclass classification. For interclass speed classification, the mean of non-filtered instantaneous velocities scored a 0.49% error rate in detecting the speed type over 405 motions, while the standard deviation of filtered instantaneous velocity scored 5.43% during the intraclass classification. Moreover, the first 60% of the range of movement provides a classification error relatively close to the use of the whole movement range—this can be used for predicting the speed type in real time. Furthermore, the most important 10% of a whole motion is the 50–60% region. The results are promising, and this approach can be implemented in a human–computer interaction system for interactive tremor diagnosis, specifically measuring hand-related disability and improvement. In this study, we asked healthy subjects to mimic abnormality by moving slowly; however,

testing this approach on patients with Parkinson's disease or any hand tremors remains a task for future work.

Consent

Written informed consent was obtained from each subject for the publication of this report and any accompanying images.

Competing interests

The authors declare that they have no competing interests.

Authors' contributions

ME designed the experiment. ME and FP carried out the data collection. ME, FP, DA, and NT performed the statistical analysis. ME, FP, DA, and NT conceived of the study, and participated in its design and coordination and helped to draft the manuscript. All authors read and approved the final manuscript.

Acknowledgments

This research, which was carried out at the BeingThere Centre, was supported by the Singapore National Research Foundation under its International Research Centre @ Singapore Funding Initiative and administered by the Interactive Digital Media Programme Office.

Author details

¹Department of Computing Science, University of Alberta, 2-32 Athabasca Hall, T6G 2E1 Edmonton, Canada. ²Institute of Media Innovation, Nanyang Technological University, 50 Nanyang Drive, 637553 Singapore, Singapore. ³School of Electrical and Electronic Engineering, University of Adelaide, SA 5005 Adelaide, Australia.

Received: 1 May 2014 Accepted: 12 June 2014

Published: 27 June 2014

References

1. Bittenbender J, Quadfasel F: **Rigid and akinetic forms of Huntington's chorea.** *Arch Neurol* 1962, **7**(4):275–288.
2. Jahanshahi M, Jenkins IH, Brown RG, Marsden CD, Passingham RE, Brooks DJ: **Self-initiated versus externally triggered movements I. An investigation using measurement of regional cerebral blood flow with PET and movement-related potentials in normal and Parkinson's disease subjects.** *Brain* 1995, **118**(4):913–933.
3. Deuschl G, Wenzelburger R, Löffler K, Raethjen J, Stolze H: **Essential tremor and cerebellar dysfunction clinical and kinematic analysis of intention tremor.** *Brain* 2000, **123**(8):1568–1580.
4. Weber I, Koch J, Meskemper J, Friedl K, Heinrich K, Hartmann U: **Is the MS Kinect suitable for motion analysis?** *Biomed Eng Biomed Tech* 2012, **57**:664.
5. Nguyen HA, Auvinet E, Mignotte M, de Guise JA, Meunier J: **Analyzing gait pathologies using a depth camera.** In *2012 Annual International Conference of the IEEE Engineering in Medicine and Biology Society (EMBC)*. San Diego: IEEE; 2012:4835–4838.
6. Min BW, Yoon HS, Soh J, Yang YM, Ejima T: **Hand gesture recognition using hidden Markov models.** In *1997 IEEE International Conference on Systems, Man, and Cybernetics. Volume 5*. Orlando: IEEE; 1997:4232–4235.
7. Campbell LW, Becker DA, Azarbajejani A, Bobick AF, Pentland A: **Invariant features for 3-D gesture recognition.** In *Proceedings of the Second International Conference on Automatic Face and Gesture Recognition*. Killington: IEEE; 1996:157–162.
8. Yoon HS, Soh J, Bae YJ, Yang HS: **Hand gesture recognition using combined features of location, angle and velocity.** *Pattern Recognit* 2001, **34**:1491–1501.
9. Rehm M, Bee N, André E: **Wave like an Egyptian: accelerometer based gesture recognition for culture specific interactions.** In *HCI 2008 Culture, Creativity, Interaction*. Swinton: British Computer Society; 2008:13–22.
10. Howard N, Pollock R, Prinold J, Sinha J, Newham D, Bergmann J: **Effect of impairment on upper limb performance in an ageing sample population.** In *Universal Access in Human-Computer Interaction. User and Context Diversity, Volume 8010 of Lecture Notes in Computer Science*. Edited by Stephanidis C, Antonia M. Berlin Heidelberg: Springer; 2013:78–87.
11. Arieli Y, Freedman B, Machline M, Shpunt A: **Depth mapping using projected patterns.** US Patent: US20100118123 A1; 2010.
12. Hunter J: **Matplotlib.** [http://matplotlib.sourceforge.net/]
13. Microsoft: **Kinect for windows SDK beta.** 2011. [http://www.microsoft.com/en-us/kinectforwindows/]
14. **MSDN Library: Coordinate spaces.** USA: Microsoft; 2012.
15. Almeida QJ, Wishart LR, Lee TD: **Bimanual coordination deficits with Parkinson's disease: the influence of movement speed and external cueing.** *Mov Disord* 2002, **17**:30–37.
16. Helsen WF, Elliott D, Starkes JL, Ricker KL: **Coupling of eye, finger, elbow, and shoulder movements during manual aiming.** *J Motor Behav* 2000, **32**(3):241–248.
17. Elgendi M, Picon F, Magenat-Thalman N: **Real-time speed detection of hand gesture using Kinect.** In *Proc. Workshop on Autonomous Social Robots and Virtual Humans, The 25th Annual Conference on Computer Animation and Social Agents (CASA 2012)*. Singapore; 2012.
18. Baak A, Müller M, Bharaj G, Seidel HP, Theobalt C: **A data-driven approach for real-time full body pose reconstruction from a depth camera.** In *Consumer Depth Cameras for Computer Vision*. Berlin Heidelberg: Springer; 2013:71–98.

19. Gorman WP, Cooper R, Pocock P, Campbell MJ: **A comparison of primidone, propranolol, and placebo in essential tremor, using quantitative analysis.** *J Neurol Neurosurg & Psychiat* 1986, **49**:64–68. [http://jnnp.bmj.com/content/49/1/64.abstract]
20. Bergmann JHM, Langdon PM, Mayagoitia RE, Howard N: **Exploring the use of sensors to measure behavioral interactions: an experimental evaluation of using hand trajectories.** *PLoS ONE* 2014, **9**(2):e88080. [http://dx.doi.org/10.1371/journal.pone.0088080]
21. Morris ME, Iansek R, Matyas TA, Summers JJ: **The pathogenesis of gait hypokinesia in Parkinson's disease.** *Brain* 1994, **117**(5):1169–1181. [http://brain.oxfordjournals.org/content/117/5/1169.abstract]
22. Pfann KD, Buchman AS, Comella CL, Corcos DM: **Control of movement distance in Parkinson's disease.** *Mov Disord* 2001, **16**(6):1048–1065. [http://dx.doi.org/10.1002/mds.1220]
23. Van Gemmert AWA, Adler CH, Stelmach GE: **Parkinson's disease patients undershoot target size in handwriting and similar tasks.** *J Neurol Neurosurg & Psychiat* 2003, **74**(11):1502–1508. [http://jnnp.bmj.com/content/74/11/1502.abstract]
24. Farley B, Koshland G: **Training BIG to move faster: the application of the speed–amplitude relation as a rehabilitation strategy for people with Parkinson's disease.** *Exp Brain Res* 2005, **167**(3):462–467. [http://dx.doi.org/10.1007/s00221-005-0179-7]

doi:10.1186/1475-925X-13-88

Cite this article as: Elgendi et al.: Arm movement speed assessment via a Kinect camera: A preliminary study in healthy subjects. *BioMedical Engineering OnLine* 2014 **13**:88.

**Submit your next manuscript to BioMed Central
and take full advantage of:**

- Convenient online submission
- Thorough peer review
- No space constraints or color figure charges
- Immediate publication on acceptance
- Inclusion in PubMed, CAS, Scopus and Google Scholar
- Research which is freely available for redistribution

Submit your manuscript at
www.biomedcentral.com/submit

