

PUBLISHED VERSION

Jennifer Permeth-Wey ... Australian Cancer Study, Australian Ovarian Cancer Study ... Consortium of Investigators of Modifiers of BRCA1/2 ... et al.

Identification and molecular characterization of a new ovarian cancer susceptibility locus at 17q21.31

Nature Communications, 2013; 4:1627-1-1627-12

© 2013 Macmillan Publishers Limited. All rights reserved. This work is licensed under a Creative Commons Attribution-NonCommercial-NoDerivs 3.0 Unported License. To view a copy of this license, visit <http://creativecommons.org/licenses/by-nc-nd/3.0/>

Originally published at:

<http://doi.org/10.1038/ncomms2613>

PERMISSIONS

<http://creativecommons.org/licenses/by-nc-nd/3.0/>



Attribution-NonCommercial-NoDerivs 3.0 Unported (CC BY-NC-ND 3.0)

This is a human-readable summary of (and not a substitute for) the [license](#).

[Disclaimer](#)

You are free to:

Share — copy and redistribute the material in any medium or format

The licensor cannot revoke these freedoms as long as you follow the license terms.

Under the following terms:



Attribution — You must give **appropriate credit**, provide a link to the license, and **indicate if changes were made**. You may do so in any reasonable manner, but not in any way that suggests the licensor endorses you or your use.



NonCommercial — You may not use the material for **commercial purposes**.



NoDerivatives — If you **remix, transform, or build upon** the material, you may not distribute the modified material.

No additional restrictions — You may not apply legal terms or **technological measures** that legally restrict others from doing anything the license permits.

<http://hdl.handle.net/2440/93695>

ARTICLE

Received 17 Dec 2012 | Accepted 18 Feb 2013 | Published 27 Mar 2013

DOI: 10.1038/ncomms2613

OPEN

Identification and molecular characterization of a new ovarian cancer susceptibility locus at 17q21.31

Jennifer Permuth-Wey, Kate Lawrenson, Howard C. Shen *et al.*[†]

Epithelial ovarian cancer (EOC) has a heritable component that remains to be fully characterized. Most identified common susceptibility variants lie in non-protein-coding sequences. We hypothesized that variants in the 3' untranslated region at putative microRNA (miRNA)-binding sites represent functional targets that influence EOC susceptibility. Here, we evaluate the association between 767 miRNA-related single-nucleotide polymorphisms (miRSNPs) and EOC risk in 18,174 EOC cases and 26,134 controls from 43 studies genotyped through the Collaborative Oncological Gene-environment Study. We identify several miRSNPs associated with invasive serous EOC risk (odds ratio = 1.12, $P = 10^{-8}$) mapping to an inversion polymorphism at 17q21.31. Additional genotyping of non-miRSNPs at 17q21.31 reveals stronger signals outside the inversion ($P = 10^{-10}$). Variation at 17q21.31 is associated with neurological diseases, and our collaboration is the first to report an association with EOC susceptibility. An integrated molecular analysis in this region provides evidence for *ARH-GAP27* and *PLEKHM1* as candidate EOC susceptibility genes.

[†]A full list of authors and their affiliations appears at the end of the paper.

Genome-wide association studies (GWAS) have identified hundreds of genetic variants conferring low penetrance susceptibility to cancer¹. More than 90% of these variants lie in non protein-encoding sequences including non-coding RNAs and regions containing regulatory elements (that is, enhancers, promoters, untranslated regions (UTRs))¹. The emerging hypothesis is that common variants within non-coding regulatory regions influence expression of target genes, thereby conferring disease susceptibility¹.

MicroRNAs (miRNAs) are short non-coding RNAs that regulate gene expression post-transcriptionally by binding primarily to the 3'UTR of target messenger RNA (mRNA), causing translational inhibition and/or mRNA degradation^{2–4}. MiRNAs have been shown to have a key role in the development of epithelial ovarian cancer (EOC)². We^{5,6} and others⁷ have found evidence that various miRNA-related single-nucleotide polymorphisms (miRSNPs) are associated with EOC risk, suggesting they may be key disruptors of gene function and contributors to disease susceptibility^{8,9}. However, studies of miRSNPs that affect miRNA–mRNA binding have been restricted by small sample sizes, and therefore have limited statistical power to identify associations at genome-wide levels of significance^{7–9}. Large-scale studies and more systematic approaches are warranted to fully evaluate the role of miRSNPs and their contribution to disease susceptibility.

Here, we use the *in silico* algorithms, TargetScan^{10,11} and Pictar^{12,13} to predict miRNA:mRNA-binding regions involving genes and miRNAs relevant to EOC, and align identified regions with SNPs in the Single Nucleotide Polymorphism database (dbSNP) (Methods). We then genotype 1,003 miRSNPs (or tagging SNPs with $r^2 > 0.80$) in 18,174 EOC cases and 26,134 controls from 43 studies from the Ovarian Cancer Association Consortium (OCAC) (Supplementary Table S1). Genotyping was performed on a custom Illumina Infinium iSelect array designed as part of the Collaborative Oncological Gene–environment Study (COGS), an international effort that evaluated 211,155 SNPs and their association with ovarian, breast and prostate cancer risk. Our investigation uncovers 17q21.31 as a new susceptibility locus for EOC, and we provide insights into candidate genes and possible functional mechanisms underlying disease development at this locus.

Results

Association analyses. Seven hundred and sixty-seven of the 1,003 miRSNPs passed genotype quality control (QC) and were evaluated for association with invasive EOC risk; most of the miRSNPs that failed QC were monomorphic (see Methods). Primary analysis of 14,533 invasive EOC cases and 23,491 controls of European ancestry revealed four strongly correlated SNPs ($r^2 = 0.99$; rs1052587, rs17574361, rs4640231 and rs916793) that mapped to 17q21.31 and were associated with increased risk (per allele odds ratio (OR) = 1.10, 95% confidence interval (CI) 1.06–1.13) at a genome-wide level of significance (10^{-7}); no other miRSNPs had associations stronger than $P < 10^{-4}$ (Supplementary Fig. S1). The most significant association was for rs1052587 ($P = 1.9 \times 10^{-7}$), and effects varied by histological subtype, with the strongest effect observed for invasive serous EOC cases (OR = 1.12, $P = 4.6 \times 10^{-8}$) (Table 1). No heterogeneity in ORs was observed across study sites (Supplementary Fig. S2).

Rs1052587, rs17574361 and rs4640231 reside in the 3'UTR of microtubule-associated protein tau (*MAPT*), KAT8 regulatory NSL complex subunit 1 (*KANSL1/KIAA1267*) and corticotrophin-releasing hormone receptor 1 (*CRHR1*) genes, at putative binding sites for miR-34a, miR-130a and miR-34c, respectively. The fourth SNP, rs916793, is perfectly correlated with rs4640231 and lies in a non-coding RNA, *MAPT*-antisense 1. 17q21.31 contains a ~900-kb inversion polymorphism¹⁴ (ch 17: 43,624,578–44,525,051 MB, human genome build 37), and all three miRSNPs and the tagSNP are located within the inversion (Fig. 1).

Chromosomes with the non-inverted or inverted segments of 17q21.31, respectively, known as haplotype 1 (H1) and haplotype 2 (H2), represent two distinct lineages that diverged ~3 million years ago and have not undergone any recombination event¹⁴. The four susceptibility alleles identified here reside on the H2 haplotype that is reported to be rare in Africans and East Asians, but is common (frequency >20%) and exhibits strong linkage disequilibrium (LD) among Europeans¹⁴, consistent with our findings. The H2 haplotype has a frequency of 22% among European women in our primary analysis (Table 1) but only 3.2 and 0.3% among Africans (151 invasive cases, 200 controls) and Asians (716 invasive cases, 1573 controls), respectively.

Table 1 | Tests of association by histological subtype for directly genotyped and imputed SNPs at 17q21.31 most strongly associated with invasive epithelial ovarian cancer risk among Europeans.

SNP Major > minor allele	Coordinate*	MAF	Subtype	Number of cases (versus 23,491 controls)	Per-allele OR (95% CI)†	P-value
rs1052587‡ (T > C)	44102604	0.22	All invasives	14,533	1.10 (1.06–1.13)	1.9×10^{-7}
			Serous	8,371	1.12 (1.08–1.17)	4.6×10^{-8}
			Endometrioid	2,068	1.11 (1.04–1.19)	5.2×10^{-3}
			Clear cell	1,025	0.98 (0.88–1.09)	0.68
			Mucinous	944	1.07 (0.96–1.20)	0.22
rs12942666§ (A > G)	43499839	0.22	All invasives	14,533	1.11 (1.07–1.15)	3.3×10^{-8}
			Serous	8,371	1.15 (1.11–1.20)	1.0×10^{-9}
			Endometrioid	2,068	1.10 (1.02–1.18)	0.04
			Clear Cell	1,025	1.04 (0.92–1.14)	0.61
			Mucinous	944	1.04 (0.92–1.16)	0.55
rs2960000 (T > C)	43534353	0.18	All invasives	14,533	1.12 (1.08–1.16)	4.2×10^{-9}
			Serous	8,371	1.16 (1.12–1.20)	3.3×10^{-10}
			Endometrioid	2,068	1.12 (1.03–1.20)	0.01
			Clear cell	1,025	1.05 (0.93–1.16)	0.44
			Mucinous	944	1.03 (0.90–1.15)	0.65

Abbreviations: CI, confidence interval; MAF, minor allele frequency in controls; OR, odds ratio.

*Genome build NCBI B37/human genome build 19 assembly.

†OR and 95% CI per copy of the minor allele, with adjustment for the first five eigenvalues from principal components analysis.

‡rs1052587 is the most statistically significant miRNA-binding site SNP among all invasives and serous; it resides in a putative miRNA-binding site between microtubule-associated protein tau (*MAPT*) and miR-34a-5p (chr 1:9134225–9134425).

§rs12942666 is a SNP at 17q21.31 that was directly genotyped as part of COGS; it is in strong linkage disequilibrium ($r^2 = 0.99$) with two other 17q21.31 SNPs that were directly genotyped but had less optimal clustering: rs2077606 ($P = 3.9 \times 10^{-10}$ for the serous subtype) and rs17631303 ($P = 4.7 \times 10^{-10}$ for the serous subtype).

||rs2960000 represents the most statistically significant SNP at 17q21.31 (among all invasives) that was imputed from the 1000 genome Project reference panel with an R-squared quality metric of 95% or greater (<http://www.1000genomes.org/page.php>).

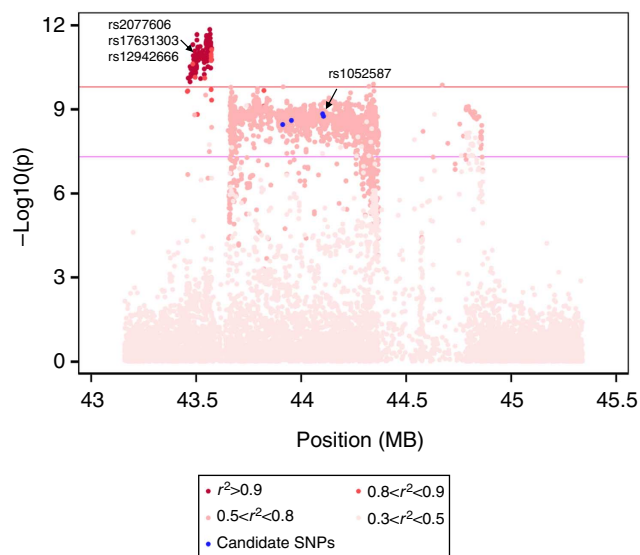


Figure 1 | Regional association plot for genotyped and imputed SNPs at 17q21.31.

The middle portion of the plot contains the region of the inversion polymorphism (ch 17: 43,624,578–44,525,051, hg build 37), with the four blue dots representing the candidate miRSNPs (rs4640231, rs1052587 and rs17574361) and the tagSNP, rs916793. rs1052587 in the 3'UTR of *MAPT* has the strongest signal ($P = 4.6 \times 10^{-8}$) among the miRSNPs. The cluster on the left side of the plot (around 43.5 MB) contains highly correlated SNPs ($r^2 = 0.99$), including three directly genotyped intronic SNPs, rs2077606 and rs17631303 in *PLEKHM1* ($P = 3.9 \times 10^{-10}$ and $P = 4.7 \times 10^{-10}$, respectively), and rs12942666 in *ARHGAP27* ($P = 1.0 \times 10^{-9}$). The LD between each plotted SNP and the top-ranked SNP in the region with the best clustering, rs12942666, is depicted by the colour scheme; the deeper the colour red, the stronger the correlation between the plotted SNP and rs12942666. The top miRSNP, rs1052587, is moderately correlated ($r^2 = 0.76$) with rs2077606, rs17631303 and rs12942666 in our study population ($n = 8,371$ invasive serous cases and $n = 23,491$ controls, of European ancestry).

To increase genomic coverage at this locus, we evaluated an additional 142 non-miRSNPs at 17q21.31 that were also genotyped as a part of COGS in the same series of OCAC cases and controls. We also imputed genotypes using data from the 1000 Genomes Project¹⁵. These approaches identified a second cluster of strongly correlated SNPs ($r^2 > 0.90$) in a distinct region proximal to the inversion (centred at chromosome 17: 43.5 MB, human genome build 37) that was more significantly associated with the risk of all invasive EOCs ($P = 10^{-9}$) and invasive serous EOC specifically ($P = 10^{-10}$) than the cluster of identified miRSNPs (Fig. 1). Association results and annotation for SNPs in this second cluster are shown in Supplementary Table S2; this cluster includes three directly genotyped SNPs (rs2077606, rs17631303 and rs12942666), with the strongest association observed for rs2077606 among all invasive cases (OR = 1.12, 95% CI: 1.08–1.16, $P = 7.8 \times 10^{-9}$) and invasive serous cases (OR = 1.15, 95% CI: 1.12–1.19, $P = 3.9 \times 10^{-10}$). These SNPs were chosen for genotyping in COGS because they had shown evidence of association as modifiers of EOC risk in *BRCA1* gene mutation carriers by the Consortium of Investigators of Modifiers of *BRCA1/2* (CIMBA)¹⁶. Several imputed SNPs in strong LD ($r^2 > 0.90$) were more strongly associated with risk than their highly correlated genotyped SNPs (Supplementary Table S2). This risk-associated region at 17q21.31 is distinct from a previously reported ovarian cancer susceptibility locus at 17q21 (ref. 17); neither the genotyped nor the imputed SNPs we report here are strongly correlated (maximum $r^2 = 0.01$)

with SNPs from the 17q21 locus (spanning 46.2–46.5 MB, build 37).

Genotype clustering was poor for rs2077606, but clustering was good for its correlated SNP, rs12942666 ($r^2 = 0.99$) and so results for this SNP are presented instead (Supplementary Fig. S3; Table 1). Subgroup analysis revealed marginal evidence of association for rs12942666 with endometrioid ($P = 0.04$), but not mucinous or clear cell EOC subtypes (Table 1), and results were consistent across studies (Supplementary Fig. S4). Rs12942666 is correlated with the top-ranked miRSNP, rs1052587 ($r^2 = 0.76$) (Fig. 1). To evaluate whether associations observed for rs12942666 and rs1052587 represented independent signals, stepwise logistic regression was used; only rs12942666 was retained in the model. This suggests that the cluster which includes rs12942666 is driving the association with EOC risk that was initially identified through the candidate miRSNPs.

Functional and molecular analyses. To evaluate functional evidence for candidate genes, risk-associated SNPs, and regulatory regions at 17q21.31, we examined a 1-MB region centred on rs12942666 using a combination of locus-specific and genome-wide assays and *in silico* analyses of publicly available data sets, including The Cancer Genome Atlas (TCGA) Project¹⁸ (see Methods). Rs12942666 and many of its correlated SNPs lie within introns of Rho GTPase activating protein 27 (*ARHGAP27*) or its neighbouring gene, pleckstrin homology domain containing family M (with RUN domain) member 1 (*PLEKHM1*) (Supplementary Table S2). There are another 15 known protein-coding genes within the region: *KIF18B*, *CIQL1*, *DCAKD*, *NMT1*, *PLCD3*, *ABCBA4*, *HEXIM1*, *HEXIM2*, *FMNL1*, *C17orf46*, *MAP3K14*, *C17orf69*, *CRHR1*, *IMP5* and *MAPT* (Fig. 2a).

To evaluate the likelihood that one or more genes within this region represent target susceptibility gene(s), we first analysed expression, copy number variation and methylation involving these genes in EOC tissues and cell lines (Fig. 2b–g; Supplementary Tables S3 and S4). Most genes showed significantly higher expression ($P < 10^{-4}$) in EOC cell lines versus normal ovarian cancer precursor tissues (OCPTs); *ARHGAP27* showed the most pronounced difference in gene expression between cancer and normal cells ($P = 10^{-16}$) (Fig. 2b and Supplementary Table S3). For nine genes, we also found overexpression in primary high-grade serous (HGS) EOC tumours versus normal ovarian tissue in at least one of two publicly available data sets, TCGA series of 568 tumours¹⁸ and/or the Gene Expression Omnibus series GSE18520 data set consisting of 53 tumors¹⁹ (Fig. 2c and Supplementary Table S3). Analysis of DNA copy number variation in TCGA revealed frequent loss of heterozygosity in this region rather than copy number gains (Supplementary Fig. 5a–b; Supplementary Methods). We observed significant hypomethylation ($P < 0.01$) in ovarian tumours compared to normal tissues for *DCAKD*, *PLCD3*, *ACBD4*, *FMNL1* and *PLEKHM1* (Fig. 2d and Supplementary Table S4), which is consistent with the overexpression observed for *DCAKD*, *PLCD3* and *FMNL1*. Taken together, these data suggest that the mechanism underlying overexpression may be epigenetic rather than based on copy number alterations.

We evaluated associations between genotypes for the top risk SNP rs12942666 (or a tagSNP) and expression of all genes in the region (expression quantitative trait locus (eQTL) analysis) in normal OCPTs, lymphoblastoid cell lines and primary ovarian tumours from TCGA. The only significant eQTL association observed ($P < 0.05$) in normal OCPTs was for *ARHGAP27* ($P = 0.04$) (Fig. 2e; Supplementary Table S3). Because rs12942666 was not genotyped in tissues analysed in TCGA, we used data for its correlated SNP rs2077606 ($r^2 = 0.99$) to evaluate eQTLs in tumour tissues. Rs2077606 genotypes were strongly

Figure 2 | Expression and methylation analyses at the 17q21.31 ovarian cancer susceptibility locus. (a) Genomic map and LD structure. The location and approximate size of 17 known protein-coding genes (grey) and one microRNA (blue) in the region are shown relative to the location of rs12942666. Orange indicates the location of the inversion polymorphism, and green indicates the region outside the inversion. (b) Gene expression (EOC and normal cell lines). Gene expression analysis in epithelial ovarian cancer (EOC) cell lines (T; $n = 51$) compared with normal ovarian surface epithelial cells (OSECs) and fallopian tube secretory epithelial cells (FTSECs) (N; $n = 73$) ($*P < 0.05$, $**P < 0.01$, $***P < 0.001$). (c) Gene expression (primary EOCs and normal tissue). Boxplots of The Cancer Genome Atlas (TCGA) Affymetrix U133A-array-based gene expression in primary high-grade serous ovarian tumours (T; $n = 568$) and normal fallopian tube tissues (N; $n = 8$). Where data were not available in TCGA, gene expression data from the Gene Expression Omnibus series GSE18520 data set containing 53 high-grade serous tumours and 10 normal ovarian tissues are shown (indicated by a red asterisk). (d) Methylation (primary tumours and normal tissue). Methylation analysis of 106 high-grade serous ovarian tumours compared with normal ovarian tissues ($n = 7$). Methylation data were generated for CpG site(s) associated with each gene using the Illumina 450 methylation array. Pairwise analysis of methylation for an individual CpG for each gene is based on the CpG with most significant inverse relationship to gene expression (that is, *cis* negative), for a subset of 43 tumours having available gene expression data. Statistically significant *cis*-negative probes are indicated by a red open circle. (e) eQTL analysis (OSECs/FTSECs). eQTL analysis comparing expression of each gene to genotype for the most statistically significant SNP at 17q21.31 (rs12942666), for 73 normal OSEC/FTSEC lines. Data are presented as box plots comparing expression levels in cases carrying rare homozygotes/heterozygotes, with cases homozygous for the common allele. (f) eQTL analysis (primary EOCs). eQTL analysis comparing expression of each gene by genotype using level 3 gene expression profiling data from Agilent 244K custom arrays and level 2 genotype data from the Illumina 1M-Duo BeadChip for 568 high-grade serous ovarian cancer patients from TCGA. In all panels $*P < 0.05$, $**P < 0.01$, $***P < 0.001$. Grey X's indicate data not available. Here, genotype data for rs2077606 is used (rather than rs12942666) because rs12942666 was not genotyped in the TCGA data set. (g) Methylation quantitative trait locus (mQTL) analysis (primary EOCs). mQTL analysis showing methylation status in 227 high-grade serous EOCs relative to rs12942666 genotype.

suggesting the functional SNP(s) may be located within an enhancer, insulator or other regulatory element that regulates expression of one of the candidate genes we evaluated. One hypothesis emerging from these molecular analyses is that rs12942666 (or a correlated SNP) mediates regulation of *PLEKHM1*, a gene implicated in osteopetrosis and endocytosis²¹ and/or *ARHGAP27*, a gene that may promote carcinogenesis through dysregulation of Rho/Rac/Cdc42-like GTPases²². To identify the most likely candidate for being the causal variant at 17q21.31, we compared the difference between log-likelihoods generated from un-nested logistic regression models for rs12942666 and each of 198 SNPs in a 1-MB region featured in Supplementary Table 2. As expected, the log-likelihoods were very similar due to the strong LD; no SNPs emerged as having a likelihood ratio > 20 for being the causal variant.

To explore the possible functional significance of rs12942666 and strongly correlated variants ($r^2 > 0.80$), we then generated a map of regulatory elements around rs12942666 using Encyclopedia of DNA Elements (ENCODE) data and formaldehyde-assisted isolation of regulatory elements sequencing analysis of OCPTs (Supplementary Methods). We observed no evidence of putative regulatory elements coinciding with rs12942666 or correlated SNPs (Fig. 3a). A map of regulatory elements in the entire 1-MB region can be seen in Supplementary Fig. 5c–f. We subsequently used *in silico* tools (ANNOVAR²³, SNPinfo²⁴ and SNPnexus²⁵) to evaluate the putative function of possible causal SNPs (Supplementary Methods). Of 50 SNPs with possible functional roles, more than 30 reside in putative transcription factor binding sites (TFBS) within or near *PLEKHM1* or *ARHGAP27*; 12 SNPs may affect methylation or miRNA binding, and two are non-synonymous coding variants predicted to be of no functional significance (Supplementary Table S2).

As most of the top-ranked 17q21.31 SNPs with putative functions (including two of the top directly genotyped SNPs, rs2077606 and rs17631303) are predicted to lie in TFBS (Supplementary Table S2), we used the *in silico* tool, JASPAR²⁶, to further examine TFBS coinciding with these SNPs. Two SNPs scored high in this analysis (Supplementary Table S5); the first, rs12946900, lies in a GAGGAA motif and canonical binding site for *SPIB*, an Ets family member²⁷. Ets factors have been implicated in the development of ovarian cancer and other malignancies²⁸, but little evidence supports a specific role for *SPIB* in EOC aetiology. The second hit was for rs2077606, which

lies in an E-box motif CACCTG at the canonical binding site for *ZEB1* (chr. 10p11.2), a zinc-finger E-box binding transcription factor that represses E-cadherin^{29,30} and contributes to epithelial–mesenchymal transition in EOCs³¹.

We analysed expression of *SPIB* and *ZEB1* in primary ovarian cancers using TCGA data; we found no significant difference in *SPIB* expression in tumours compared with normal tissues (Fig. 3bi). In contrast, *ZEB1* expression was significantly lower in primary HGS-EOCs compared with normal tissues ($P = 0.005$) (Fig. 3bii). We validated this finding using qPCR analysis in 123 EOC and OCPT cell lines ($P = 8.8 \times 10^{-4}$) (Fig. 3biii). As rs2077606 lies within an intron of *PLEKHM1*, this gene is a candidate target for *ZEB1* binding at this site. Our eQTL analysis also suggests *ARHGAP27* is a strong candidate *ZEB1* target at this locus; *ARHGAP27* expression is highest in OCPT cell lines carrying the minor allele of rs2077606 ($P = 0.034$) (Fig. 3ci). Although we observed no eQTL associations between rs2077606 and *ZEB1* expression in lymphoblastoid cell lines (Fig. 3cii), we found evidence of eQTL between rs2077606 and *ZEB1* expression in HGS-EOCs ($P = 0.045$) (Fig. 3ciii). *ZEB1* binding at the site of the common allele is predicted to repress gene expression whereas loss of *ZEB1* binding conferred by the minor allele may enable expression of *ARHGAP27*, consistent with the eQTL association in OCPTs (Fig. 3ci). Although these data support a repressor role for *ZEB1* in EOC development and suggest *ARHGAP27* may be a functional target of rs2077606 (or a correlated SNP) in OCPTs through trans-regulatory interactions with *ZEB1*, it is important to investigate additional hypotheses as we continue to narrow down the list of target susceptibility genes, SNPs, and regulatory mechanisms that contribute to EOC susceptibility at this locus.

Discussion

The present study represents the largest, most comprehensive investigation of the association between putative miRSNPs in the 3'UTR and cancer risk. This and the systematic follow-up to evaluate associations with EOC risk for non-miRSNPs in the region identified 17q21.31 as a new susceptibility locus for EOC. Although the miRSNPs identified here may have some biological significance, our findings suggest that other types of variants in non-coding DNA, especially non-miRSNPs at the 17q21.31 locus, are stronger contributors to EOC risk. It is possible, however, that highly significant miRSNPs exist that were not identified in our study because (a) they were not pre-selected for evaluation (that

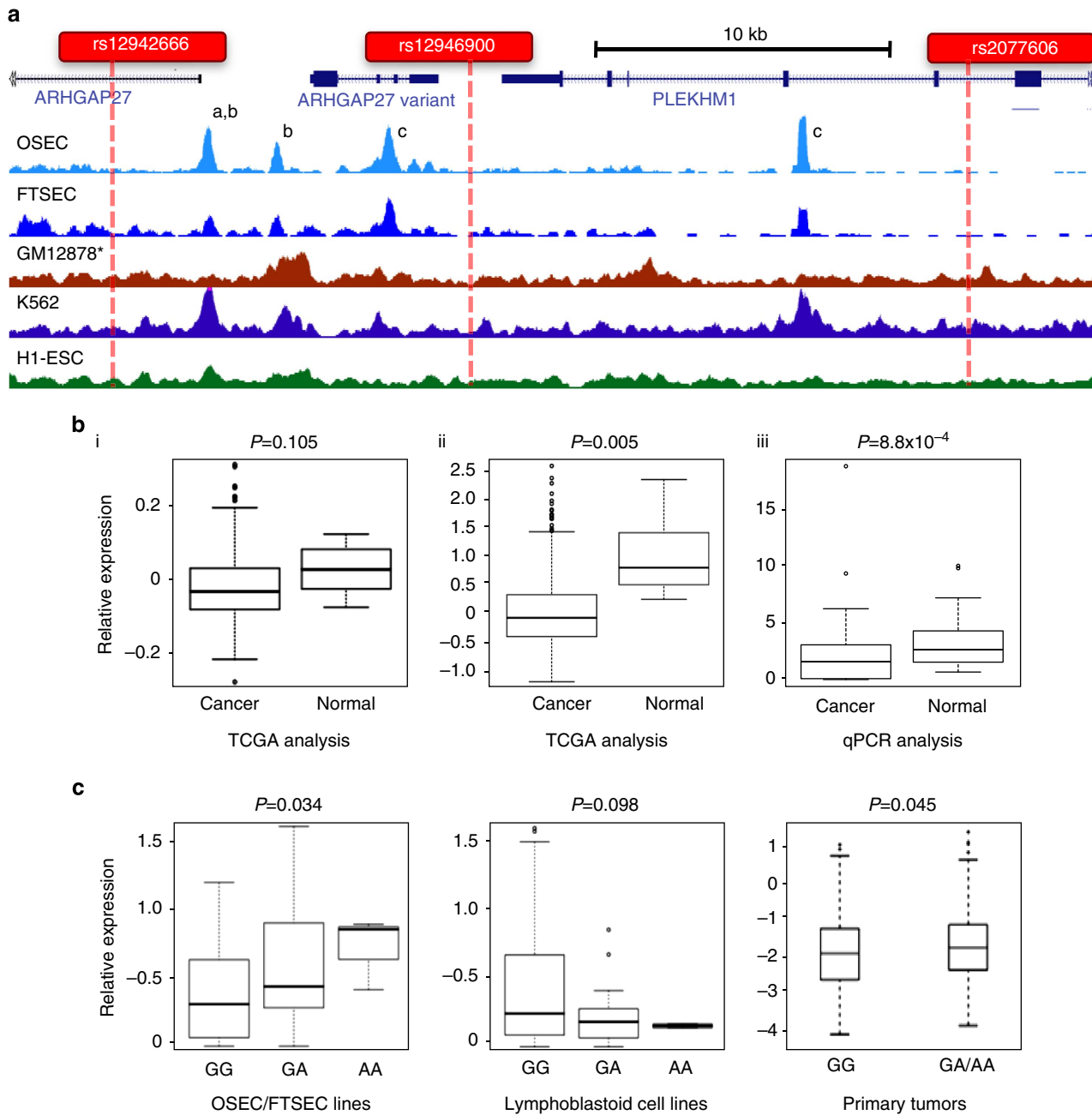


Figure 3 | The non-coding landscape and eQTL associations for the rs2077606 susceptibility SNP at 17q21.31. (a) Analysis of the chromatin landscape at *ARHGAP27* and *PLEKHM1* in normal ovarian surface epithelial and fallopian tube secretory epithelial cells (OSECs/FTSECs) by formaldehyde-assisted isolation of regulatory elements sequencing (FAIRE-seq). Alignment with ENCODE FAIRE-seq tracks (shown) and ChIP-seq tracks (not shown) from non-EOC-related cell lines reveals open chromatin peaks corresponding to (a) promoters (b) CTCF insulator binding sites and (c) H3K4me3 signals, suggestive of a dynamic regulatory region. An H3K4me3 signal at a coding *ARHGAP27* mRNA variant (c) located between the genes is highly pronounced in OSEC/FTSEC, suggesting tissue-specific expression and function. Several of the top-ranking SNPs fall within TFBS (Supplementary Table S2). rs12942666 did not coincide with TFBS, but tightly linked SNPs, rs12946900 and rs2077606 fell within predicted binding sites for SPIB and ZEB1, respectively. (b) We analysed the expression of *SPIB* and *ZEB1* in primary high-grade serous tumours from TCGA and found (i) no significant change in *SPIB* expression but (ii) significant downregulation of *ZEB1* in tumours compared with normal tissues. (iii) QPCR analysis of *ZEB1* expression in 73 OCPT and 50 EOC cell lines supported the finding that *ZEB1* expression is lower in cancer cell lines compared with normal precursor tissues. (c) eQTL analysis in OSECs/FTSECs for different alleles of rs2077606. (i) There was a significant eQTL for *ARHGAP27*, with the minor (A) allele being associated with increased *ARHGAP27* expression. (ii) There was no evidence of an association between rs2077606 genotypes and *ARHGAP27* expression in lymphoblastoid cell lines, suggesting this association may be tissue-specific. (iii) We observed a borderline significant eQTL association between *ZEB1* mRNA and rs2077606 in tumours from TCGA, with the minor risk allele also associated with lower expression.

is, they do not reside in a binding site involving miRNAs or genes with known relevance to EOC, or they reside in regions other than the 3'UTR^{3,4}) and/or (b) they were very rare and could not

be designed or detected with our genotyping platform and sample size, respectively. Despite these limitations, the homogeneity between studies of varying designs and populations in the OCAC

and the genome-wide levels of statistical significance imply that all detected associations are robust. Furthermore, molecular correlative analyses of genes within the region suggest that *cis*-acting genetic variants influencing non-coding DNA regulatory elements, miRNAs and/or methylation underlie disease susceptibility at the 17q21.31 locus. Finally, these studies point to a subset of candidate genes (that is, *PLEKHM1*, *ARHGAP27*) and a transcription factor (that is, *ZEB1*) that may influence EOC initiation and development.

This novel locus is one of eleven loci now identified that contains common genetic variants conferring low penetrance susceptibility to EOC in the general population^{17,32–34}. Genetic variants at several of these loci influence risks of more than one cancer type, suggesting that several cancers may share common mechanisms. For example, alleles at 5p15.33 and 19p13.1 are associated with estrogen-receptor-negative breast cancer and serous EOC susceptibility^{32,35}, and variants at 8q24 are associated with risk of EOC and other cancers^{17,36}. Genetic variation at 17q21.31 is also associated with frontotemporal dementia-spectrum disorders, Parkinson's disease, developmental delay and alopecia^{37–42}. Through COGS, the CIMBA also recently identified 17q21.31 variants that modify EOC risk in *BRCA1* and *BRCA2* carriers ($P < 10^{-8}$ in *BRCA1/2* combined)¹⁶. In particular, rs17631303, which is perfectly correlated with rs2077606 and rs12942666, was among the top-ranking SNPs detected by CIMBA¹⁶. Consistent with our findings, CIMBA also provide data that suggest EOC risk is associated with altered expression of one or more genes in the 17q21.31 region¹⁶. Thus, results from this large-scale collaboration support a role for this locus in both *BRCA1/2*- and non-*BRCA1/2*-mediated EOC development. Before these findings can be integrated with variants from other confirmed loci and non-genetic factors to predict women at greatest risk of developing EOC and provide options for medical management of these risks, continued efforts will be needed to fine map the 17q21.31 region and to fully characterize the functional and mechanistic effects of potential causal SNPs in disease aetiology and development.

Methods

Study population. Forty-three individual OCAC studies contributed samples and data to the COGS initiative. Nine of the 43 participating studies were case-only (GRR, HSK, LAX, ORE, PVD, RMH, SOC, SRO, UKR); cases from these studies were pooled with case-control studies from the same geographic region. The two national Australian case-control studies were combined into a single study to create 34 case-control sets. Details regarding the 43 participating OCAC studies are summarized in Supplementary Table S1. Briefly, cases were women diagnosed with histologically confirmed primary EOC (invasive or low malignant potential), fallopian tube cancer or primary peritoneal cancer ascertained from population- and hospital-based studies and cancer registries. The majority of OCAC cases (>90%) do not have a family history of ovarian or breast cancer in a first-degree relative, and most have not been tested for *BRCA1/2* mutations as a part of their parent study. Controls were women without a current or prior history of ovarian cancer with at least one ovary intact at the reference date. All studies had data on disease status, age at diagnosis/interview, self-reported racial group and histologic subtype. Most studies frequency-matched cases and controls on age group and race.

Selection of candidate genes and SNPs. To increase the likelihood of identifying miRNAs with biological relevance to EOC, we reviewed published literature and consulted public databases to generate two lists of candidate genes: (1) 55 miRNAs reported to be deregulated in EOC tumours compared with normal tissue in at least one study^{43–46}, and (2) 665 genes implicated in the pathogenesis of EOC through gene expression analyses^{47,48}, somatic mutations⁴⁹, or genetic association studies^{50,51}. Many genes were identified through the Gene Prospector database⁵¹, a web-based application that selects and prioritizes potential disease-related genes using a highly curated, up-to-date database of genetic association studies.

Using each candidate gene list as input, we identified putative sites of miRNA:mRNA binding with the computational prediction algorithms TargetScan version 5.1 (refs 10,11) and PicTar^{12,13} (Supplementary Methods). Each algorithm generated start and end coordinates for regions of miRNA binding, and database SNP⁵² version 129 was mined to identify SNPs falling within the designated binding regions. Of 3,246 unique miRNAs that were identified, 1,102 obtained

adequate design scores using Illumina's Assay Design Tool. The majority ($n = 1,085$, 98.5%) of the 1,102 SNPs resided in predicted sites of miRNA binding (and therefore represent miRSNPs), while the remainder ($n = 17$) are tagSNPs ($r^2 > 0.80$) for miRSNPs that were not designable or had poor-to-moderate design scores. Ninety-nine of the 1,102 SNPs failed during custom assay development, leaving a total of 1,003 SNPs that were designed and genotyped.

Genotyping and QC. The candidate miRSNPs selected for the current investigation were genotyped using a custom Illumina Infinium iSelect Array as part of the international COGS, an effort to evaluate 211,155 genetic variants for association with the risk of ovarian, breast and prostate cancer. Samples and data were included from several consortia, including OCAC, the Breast Cancer Association Consortium, the Consortium of Investigators of Modifiers of *BRCA1/2* (CIMBA) and the Prostate Cancer Association Group to Investigate Cancer-Associated Alterations in the Genome (PRACTICAL). Although one of the primary goals of COGS was to replicate and fine-map findings from pooled GWAS from each consortia, this effort also aimed to genotype candidate SNPs of interest (such as the miRSNPs). The genotyping and QC process has been described recently in our report of OCAC's pooled GWAS findings³⁴. Briefly, COGS genotyping was conducted at six centres, two of which were used for OCAC samples: McGill University and G n me Qu bec Innovation Centre (Montr al, Canada) ($n = 19,806$) and Mayo Clinic Medical Genomics Facility ($n = 27,824$). Each 96-well plate contained 250 ng genomic DNA (or 500 ng whole genome-amplified DNA). Raw intensity data files were sent to the COGS data coordination centre at the University of Cambridge for genotype calling and QC using the GenCall algorithm.

Sample QC. One thousand two hundred and seventy-three OCAC samples were genotyped in duplicate. Genotypes were discordant for greater than 40 per cent of SNPs for 22 pairs. For the remaining 1,251 pairs, concordance was greater than 99.6 per cent. In addition, we identified 245 pairs of samples that were unexpected genotypic duplicates. Of these, 137 were phenotypic duplicates and judged to be from the same individual. We used identity-by-state to identify 618 pairs of first-degree relatives. Samples were excluded according to the following criteria: (1) 1,133 samples with a conversion rate (the proportion of SNPs successfully called per sample) of less than 95 per cent; (2) 169 samples with heterozygosity > 5 s.d.'s from the intercontinental ancestry-specific mean heterozygosity; (3) 65 samples with ambiguous sex; (4) 269 samples with the lowest call rate from a first-degree relative pair; (5) 1,686 samples that were either duplicate samples that were non-concordant for genotype or genotypic duplicates that were not concordant for phenotype. A total of 44,308 eligible subjects including 18,174 cases and 26,134 controls were available for analysis.

SNP QC. The process of SNP selection by the participating consortia has been summarized previously³⁴. In total, 211,155 SNP assays were successfully designed, including 23,239 SNPs nominated by OCAC. Overall, 94.5% of OCAC-nominated SNPs passed QC. SNPs were excluded if: (1) the call rate was <95% with $MAF > 5\%$ or <99% with $MAF < 5\%$ ($n = 5,201$); (2) they were monomorphic upon clustering ($n = 2,587$); (3) P -values of HWE in controls were < 10^{-7} ($n = 2,914$); (4) there was greater than 2% discordance in duplicate pairs ($n = 22$); (5) no genotypes were called ($n = 1,311$). Of 1,003 candidate miRSNPs genotyped, 767 passed QC criteria and were available for analysis; the majority of miRSNPs that were excluded were monomorphic ($n = 158$, 67%). Genotype intensity cluster plots were visually inspected for the most strongly associated SNPs.

Population stratification. HapMap DNA samples for European (CEU, $n = 60$), African (YRI, $n = 53$) and Asian (JPT + CHB, $n = 88$) populations were also genotyped using the COGS iSelect. We used the program LAMP⁵³ to estimate intercontinental ancestry based on the HapMap (release no. 23) genotype frequency data for these three populations. Eligible subjects with >90 per cent European ancestry were defined as European ($n = 39,773$) and those with greater than 80 per cent Asian or African ancestry were defined as Asian ($n = 2,382$) or African, respectively ($n = 387$). All other subjects were defined as being of mixed ancestry ($n = 1,766$). We then used a set of 37,000 unlinked markers to perform principal components analysis within each major population subgroup. To enable this analysis on very large sample sizes, we used an in-house program written in C++ using the Intel MKL libraries for eigenvectors (available at <http://ccge.medschl.cam.ac.uk/software/>).

Tests of association. We used unconditional logistic regression treating the number of minor alleles carried as an ordinal variable (log-additive model) to evaluate the association between each SNP and EOC risk. Separate analyses were carried out for each ancestry group. The model for European subjects was adjusted for population substructure by including the first five eigenvalues from the principal components analysis. African- and Asian ancestry-specific estimates were obtained after adjustment for the first two components representing each respective ancestry. Due to the heterogeneous nature of EOC, subgroup analysis was conducted to estimate genotype-specific ORs for serous carcinomas (the most predominant histologic subtype) and the three other main histological subtypes of

EOC: endometrioid, mucinous and clear cell. Separate analyses were also carried out for each study site, and site-specific ORs were combined using a fixed-effect meta-analysis. The I^2 test of heterogeneity was estimated to quantify the proportion of total variation due to heterogeneity across studies, and the heterogeneity of ORs between studies was tested with Cochran's Q statistic. The R statistical package 'r-meta' was used to generate forest plots. Statistical analysis was conducted in PLINK⁵⁴.

Imputation of genotypes at 17q21.31. To increase genomic coverage, we imputed genotype data for the 17q21.31 region (chr17: 40,099,001–44,900,000, human genome build 37) with IMPUTE2.2 (ref. 55) using phase 1 haplotype data from the January 2012 release of the 1,000 genome project data¹⁵. For each imputed genotype the expected number of minor alleles carried was estimated (as weights). IMPUTE provides estimated allele dosage for SNPs that were not genotyped and for samples with missing data for directly genotyped SNPs. Imputation accuracy was estimated using an r^2 quality metric. We excluded imputed SNPs from analysis where the estimated accuracy of imputation was low ($r^2 < 0.3$).

Functional studies and *in silico* analysis of publicly available data sets. We performed the following assays for each gene in the 1-MB region centred on the most significant SNP at the 17q21.31 locus (see Supplementary Methods): gene expression analysis in EOC cell lines ($n = 51$) compared with normal cell lines from OCPTs⁵⁶, including ovarian surface epithelial cells and fallopian tube secretory epithelial cells ($n = 73$) and CpG island methylation analysis in HGS ovarian cancer (HGS-EOC) tissues ($n = 106$) and normal tissues ($n = 7$). Genes in the region were also evaluated *in silico* by mining publicly available molecular data generated for primary EOCs and other cancer types, including TCGA analysis of 568 HGS EOCs¹⁸, the Gene Expression Omnibus series GSE18520 data set of 53 HGS EOCs¹⁹ and the Catalogue Of Somatic Mutations in Cancer database²⁰.

We used these data to (1) compare gene expression between (a) EOC cell lines and normal cell lines and (b) tumour tissue and normal tissue from TCGA, (2) to compare gene methylation status in HGS-EOCs and normal tissue, (3) to conduct gene eQTL analyses to evaluate genotype–gene expression associations in normal OCPTs, lymphoblastoid cells and HGS-EOCs and (4) to conduct methylation quantitative trait locus analyses in HGS-EOCs to evaluate genotype–gene methylation associations. Data from ENCODE⁵⁷ were used to evaluate the overlap between regulatory elements in non-coding regions and risk-associated SNPs. ENCODE describes regulatory DNA elements (for example, enhancers, insulators and promoters) and non-coding RNAs (for example, miRNAs, long non-coding and piwi-interacting RNAs) that may be targets for susceptibility alleles. However, ENCODE does not include data for EOC-associated tissues, and activity of such regulatory elements often varies in a tissue-specific manner^{57,58}. Therefore, we profiled the spectrum of non-coding regulatory elements in ovarian surface epithelial cells and fallopian tube secretory epithelial cells using a combination of formaldehyde-assisted isolation of regulatory elements sequencing and RNA sequencing (Supplementary Methods).

References

- Freedman, M. L. *et al.* Principles for the post-GWAS functional characterization of cancer risk loci. *Nat. Genet.* **43**, 513–518 (2011).
- Dahiya, N. & Morin, P. J. MicroRNAs in ovarian carcinomas. *Endocr. Relat. Cancer* **17**, F77–F89 (2010).
- Lytle, J. R., Yario, T. A. & Steitz, J. A. Target mRNAs are repressed as efficiently by microRNA-binding sites in the 5' UTR as in the 3' UTR. *Proc. Natl Acad. Sci. USA* **104**, 9667–9672 (2007).
- Lee, I. *et al.* New class of microRNA targets containing simultaneous 5'-UTR and 3'-UTR interaction sites. *Genome Res.* **19**, 1175–1183 (2009).
- Permeth-Wey, J. *et al.* LIN28B polymorphisms influence susceptibility to epithelial ovarian cancer. *Cancer Res.* **71**, 3896–3903 (2011).
- Permeth-Wey, J. *et al.* MicroRNA processing and binding site polymorphisms are not replicated in the Ovarian Cancer Association Consortium. *Cancer Epidemiol. Biomarkers Prev.* **20**, 1793–1797 (2011).
- Liang, D. *et al.* Genetic variants in MicroRNA biosynthesis pathways and binding sites modify ovarian cancer risk, survival, and treatment response. *Cancer Res.* **70**, 9765–9776 (2010).
- Ryan, B. M., Robles, A. I. & Harris, C. C. Genetic variation in microRNA networks: the implications for cancer research. *Nat. Rev. Cancer* **10**, 389–402 (2010).
- Sethupathy, P. & Collins, F. S. MicroRNA target site polymorphisms and human disease. *Trends Genet.* **24**, 489–497 (2008).
- Lewis, B. P., Burge, C. B. & Bartel, D. P. Conserved seed pairing, often flanked by adenosines, indicates that thousands of human genes are microRNA targets. *Cell* **120**, 15–20 (2005).
- TargetScanHuman, <http://genes.mit.edu/targetscan> (2009).
- Krek, A. *et al.* Combinatorial microRNA target predictions. *Nat. Genet.* **37**, 495–500 (2005).
- PicTar, pictar.mdc-berlin.de/. Accessed January 2009.
- Stefansson, H. *et al.* A common inversion under selection in Europeans. *Nat. Genet.* **37**, 129–137 (2005).
- 1,000 Genomes, <http://www.1000genomes.org/page.php> (2012).
- Couch, F. J. *et al.* Genome-wide association study in BRCA1 mutation carriers identifies novel loci associated with breast and ovarian cancer risk. *PLoS Genetics*. doi: 10.1371/journal.pgen.1003212 (2013).
- Goode, E. L. *et al.* A genome-wide association study identifies susceptibility loci for ovarian cancer at 2q31 and 8q24. *Nat. Genet.* **42**, 874–879 (2010).
- Cancer Genome Atlas Research Network. Integrated genomic analyses of ovarian carcinoma. *Nature* **474**, 609–615 (2011).
- Mok, S. C. *et al.* A gene signature predictive for outcome in advanced ovarian cancer identifies a survival factor: microfibril-associated glycoprotein 2. *Cancer Cell* **16**, 521–532 (2009).
- Forbes, S. A. *et al.* COSMIC: mining complete cancer genomes in the Catalogue of Somatic Mutations in Cancer. *Nucleic Acids Res.* **39**, D945–D950 (2011).
- Tabata, K. *et al.* Rubicon and PLEKHM1 negatively regulate the endocytic/autophagic pathway via a novel Rab7-binding domain. *Mol. Biol. Cell* **21**, 4162–4172 (2010).
- Katoh, Y. & Katoh, M. Identification and characterization of ARHGAP27 gene *in silico*. *Int. J. Mol. Med.* **14**, 943–947 (2004).
- Wang, K., Li, M. & Hakonarson, H. ANNOVAR: functional annotation of genetic variants from high-throughput sequencing data. *Nucleic Acids Res.* **38**, e164 (2010).
- Xu, Z. & Taylor, J. A. SNPinfo: integrating GWAS and candidate gene information into functional SNP selection for genetic association studies. *Nucleic Acids Res.* **37**, W600–W605 (2009).
- Dayem Ullah, A. Z., Lemoine, N. R. & Chelala, C. SNPnexus: a web server for functional annotation of novel and publicly known genetic variants (2012 update). *Nucleic Acids Res.* **40**, W65–W70 (2012).
- JASPAR, <http://jaspar.cgb.ki.se/> (2012).
- Ray, D. *et al.* Characterization of Spi-B, a transcription factor related to the putative oncoprotein Spi-1/PU.1. *Mol. Cell Biol.* **12**, 4297–4304 (1992).
- Fujimoto, J. *et al.* Clinical implications of expression of ETS-1 related to angiogenesis in metastatic lesions of ovarian cancers. *Oncology* **66**, 420–428 (2004).
- Spaderna, S. *et al.* The transcriptional repressor ZEB1 promotes metastasis and loss of cell polarity in cancer. *Cancer Res.* **68**, 537–544 (2008).
- Peinado, H., Olmeda, D. & Cano, A. Snail, Zeb and bHLH factors in tumour progression: an alliance against the epithelial phenotype? *Nat. Rev. Cancer* **7**, 415–428 (2007).
- Bendoraitis, A. *et al.* Regulation of miR-200 family microRNAs and ZEB transcription factors in ovarian cancer: evidence supporting a mesothelial-to-epithelial transition. *Gynecol. Oncol.* **116**, 117–125 (2010).
- Bolton, K. L. *et al.* Common variants at 19p13 are associated with susceptibility to ovarian cancer. *Nat. Genet.* **42**, 880–884 (2010).
- Song, H. *et al.* A genome-wide association study identifies a new ovarian cancer susceptibility locus on 9p22.2. *Nat. Genet.* **41**, 996–1000 (2009).
- Pharoah, E. P. *et al.* GWAS meta-analysis and replication identifies three new susceptibility loci for ovarian cancer. *Nat. Genet.* doi:10.1038/ng.2564 (2013).
- Couch, F. J. *et al.* Common variants at the 19p13.1 and ZNF365 loci are associated with ER subtypes of breast cancer and ovarian cancer risk in BRCA1 and BRCA2 mutation carriers. *Cancer Epidemiol. Biomarkers Prev.* **21**, 645–657 (2012).
- Ghousaini, M. *et al.* Multiple loci with different cancer specificities within the 8q24 gene desert. *J. Natl. Cancer Inst.* **100**, 962–966 (2008).
- Coppola, G. *et al.* Evidence for a role of the rare p.A152T variant in MAPT in increasing the risk for FTD-spectrum and Alzheimer's diseases. *Hum. Mol. Genet.* **21**, 3500–3512 (2012).
- Ghidoni, R. *et al.* The H2 MAPT haplotype is associated with familial frontotemporal dementia. *Neurobiol. Dis.* **22**, 357–362 (2006).
- Koolen, D. A. *et al.* A new chromosome 17q21.31 microdeletion syndrome associated with a common inversion polymorphism. *Nat. Genet.* **38**, 999–1001 (2006).
- Tobin, J. E. *et al.* Haplotypes and gene expression implicate the MAPT region for Parkinson disease: the GenePD Study. *Neurology* **71**, 28–34 (2008).
- Li, R. B. F., Kiefer, A. K., Steffanson, H. & Nyholt, D. R. Six Novel susceptibility loci for early-onset androgenic alopecia and their unexpected association with common diseases. *PLoS Genet.* **8**, e1002746 (2012).
- Edwards, T. L. *et al.* Genome-wide association study confirms SNPs in SNCA and the MAPT region as common risk factors for Parkinson disease. *Ann. Hum. Genet.* **74**, 97–109 (2010).
- Dahiya, N. *et al.* MicroRNA expression and identification of putative miRNA targets in ovarian cancer. *PLoS ONE* **3**, e2436 (2008).
- Iorio, M. V. *et al.* MicroRNA signatures in human ovarian cancer. *Cancer Res.* **67**, 8699–8707 (2007).
- Nam, E. J. *et al.* MicroRNA expression profiles in serous ovarian carcinoma. *Clin. Cancer Res.* **14**, 2690–2695 (2008).
- Yang, H. *et al.* MicroRNA expression profiling in human ovarian cancer: miR-214 induces cell survival and cisplatin resistance by targeting PTEN. *Cancer Res.* **68**, 425–433 (2008).

47. Tothill, R. W. *et al.* Novel molecular subtypes of serous and endometrioid ovarian cancer linked to clinical outcome. *Clin. Cancer Res.* **14**, 5198–5208 (2008).
48. Zorn, K. K. *et al.* Gene expression profiles of serous, endometrioid, and clear cell subtypes of ovarian and endometrial cancer. *Clin. Cancer Res.* **11**, 6422–6430 (2005).
49. Landen, Jr C. N., Birrer, M. J. & Sood, A. K. Early events in the pathogenesis of epithelial ovarian cancer. *J. Clin. Oncol.* **26**, 995–1005 (2008).
50. Fasching, P. A. *et al.* Role of genetic polymorphisms and ovarian cancer susceptibility. *Mol. Oncol.* **3**, 171–181 (2009).
51. Yu, W., Wulf, A., Liu, T., Khoury, M. J. & Gwinn, M. Gene Prospector: an evidence gateway for evaluating potential susceptibility genes and interacting risk factors for human diseases. *BMC Bioinform.* **9**, 528 (2008).
52. NCBI dbSNP database, <http://ncbi.nlm.nih.gov/SNP> (2009).
53. Sankaraman, S., Sridhar, S., Kimmel, G. & Halperin, E. Estimating local ancestry in admixed populations. *Am. J. Hum. Genet.* **82**, 290–303 (2008).
54. Purcell, S. *et al.* PLINK: a tool set for whole-genome association and population-based linkage analyses. *Am. J. Hum. Genet.* **81**, 559–575 (2007).
55. Howie, B., Marchini, J. & Stephens, M. Genotype imputation with thousands of genomes. *G3 (Bethesda)* **1**, 457–470 (2011).
56. Lawrenson, K. *et al.* Senescent fibroblasts promote neoplastic transformation of partially transformed ovarian epithelial cells in a three-dimensional model of early stage ovarian cancer. *Neoplasia* **12**, 317–325 (2010).
57. Ernst, J. *et al.* Mapping and analysis of chromatin state dynamics in nine human cell types. *Nature* **473**, 43–49 (2011).
58. Heintzman, N. D. *et al.* Histone modifications at human enhancers reflect global cell-type-specific gene expression. *Nature* **459**, 108–112 (2009).

Acknowledgements

We thank all the individuals who participated in this research and all the researchers, clinicians and administrative staff who have made possible the many studies contributing to this work. In particular, we thank D. Bowtell, P. Webb, A. deFazio, D. Gertig, A. Green, P. Parsons, N. Hayward and D. Whiteman (AUS); D.L. Wachter, S. Oeser, S. Landrith (BAV); G. Peuteman, T. Van Brussel and D. Smeets (BEL); the staff of the genotyping unit, S LaBoissière and F Robidoux (McGill University and Génomique Québec Innovation Centre); U. Eilber and T. Koehler (GER); L. Gacucova (HMO); P. Schuermann, F. Kramer, T.-W. Park-Simon, K. Beer-Grondke and D. Schmidt (HJO); G.L. Keeney, C. Hilker and J. Vollenweider (MAY); the state cancer registries of AL, AZ, AR, CA, CO, CT, DE, FL, GA, HI, ID, IL, IN, IA, KY, LA, ME, MD, MA, MI, NE, NH, NJ, NY, NC, ND, OH, OK, OR, PA, RI, SC, TN, TX, VA, WA and WY (NHS); L. Paddock, M. King, U. Chandran, A. Samoilu and Y. Bensman (NJO); M. Insa and R. Evey (Moffitt); The Sherie Hildreth Ovarian Cancer Foundation (ORE); M. Sherman, A. Hutchinson, N. Szeszenia-Dabrowska, B. Peplonska, W. Zatonski, A. Soni, P. Chao and M. Stagner (POL); C. Luccarini, P. Harrington the SEARCH team and ECRIC (SEA); the Scottish Gynaecological Clinical Trails group and SCOTROC1 investigators (SRO); W.-H. Chow, Y.-T. Gao, G. Yang, B.-T. Ji (SWH); I. Jacobs, M. Widschwendter, E. Wozniak, N. Balogun, A. Ryan and J. Ford (UKO); M. Notaridou (USC); C. Pye (UKR); and V. Slusher (U19). The COGS project is funded through a European Commission's Seventh Framework Programme grant (agreement number 223175—HEALTH-F2-2009-223175). The Ovarian Cancer Association Consortium is supported by a grant from the Ovarian Cancer Research Fund, thanks to donations by the family and friends of Kathryn Sladek Smith (PPD/RPCI.07).

The scientific development and funding for this project were in part supported by the US National Cancer Institute (R01-CA-114343 and R01-CA114343-S1) and the Genetic Associations and Mechanisms in Oncology (GAME-ON): a NCI Cancer Post-GWAS Initiative (U19-CA148112). This study made use of the data generated by the Wellcome Trust Case Control consortium. A full list of the investigators who contributed to the generation of the data is available from <http://www.wtccc.org.uk/>. Funding for the project was provided by the Wellcome Trust under award 076113. The results published here are in part based upon data generated by The Cancer Genome Atlas Pilot Project established by the National Cancer Institute and National Human Genome Research Institute. Information about TCGA, and the investigators and institutions who constitute the TCGA research network can be found at <http://cancergenome.nih.gov/>. D.F.E. is a Principal Research Fellow of Cancer Research UK, G.C.-T. and P.M.W. are supported by the National Health and Medical Research Council. B.K. holds an American Cancer Society Early Detection Professorship (SIOP-06-258-01-COUN). L.E.K. is supported by a Canadian Institutes of Health Research Investigator award (MSH-87734). M.G. acknowledges NHS funding to the NIHR Biomedical Research Centre. A.C.A. is Cancer Research UK Senior Cancer Research Fellow. Funding of the constituent studies was provided by the American Cancer Society (CRFG-00-196-01-CCE); the California Cancer Research Program (00-01389V-20170, N01-CN25403, 2II0200); the Canadian Institutes for Health Research (MOP-86727); Cancer Council Victoria; Cancer Council Queensland; Cancer Council New South Wales; Cancer Council South Australia; Cancer Council Tasmania; Cancer Foundation of Western Australia; the Cancer Institute of New Jersey; Cancer Research UK (C490/A6187, C490/A10119, C490/A10124, C536/A13086,

C536/A6689); the Celma Mastry Ovarian Cancer Foundation; the Danish Cancer Society (94-222-52); the Norwegian Cancer Society, Helse Vest, the Norwegian Research Council; ELAN Funds of the University of Erlangen-Nuremberg; the Eve Appeal; the Helsinki University Central Hospital Research Fund; Imperial Experimental Cancer Research Centre (C1312/A15589); the Ovarian Cancer Research Fund; Nationaal Kankerplan of Belgium; Grant-in-Aid for the Third Term Comprehensive 10-Year Strategy for Cancer Control from the Ministry of Health Labour and Welfare of Japan; the L & S Milken Foundation; the Radboud University Nijmegen Medical Centre; the Polish Ministry of Science and Higher Education (4 PO5C 028 14, 2 PO5A 068 27); the Roswell Park Cancer Institute Alliance Foundation; the US National Cancer Institute (K07-CA80668, K07-CA095666, K07-CA143047, K22-CA138563, N01-CN55424, N01-PC067001, N01-PC035137, P01-CA017054, P01-CA087696, P50-CA105009, P50-CA136393, R01-CA014089, R01-CA016056, R01-CA017054, R01-CA049449, R01-CA050385, R01-CA054419, R01-CA058598, R01-CA058860, R01-CA061107, R01-CA061132, R01-CA063678, R01-CA063682, R01-CA064277, R01-CA067262, R01-CA071766, R01-CA074850, R01-CA076016, R01-CA080742, R01-CA080978, R01-CA087538, R01-CA092044, R01-095023, R01-CA106414, R01-CA122443, R01-CA136924, R01-CA112523, R01-CA114343, R01-CA126841, R01-CA149429, R03-CA113148, R03-CA115195, R37-CA073087, R01-CA83918, U01-CA069417, U01-CA071966, P30-CA15083, PSA 042205, and Intramural research funds); the NIH/National Center for Research Resources/General Clinical Research Grant (M01-RR000056); the US Army Medical Research and Materiel Command (DAMD17-98-1-8659, DAMD17-01-1-0729, DAMD17-02-1-0666, DAMD17-02-1-0669, W81XWH-10-1-02802); the Department of Defense Ovarian Cancer Research Program (W81XWH-07-1-0449); the National Health and Medical Research Council of Australia (199600 and 400281); the German Federal Ministry of Education and Research of Germany Programme of Clinical Biomedical Research (01 GB 9401); the state of Baden-Württemberg through Medical Faculty of the University of Ulm (P.685); the German Cancer Research Center; Pomeranian Medical University; the Minnesota Ovarian Cancer Alliance; the Mayo Foundation; the Fred C. and Katherine B. Andersen Foundation; the Malaysian Ministry of Higher Education (UM.C/HIR/MOHE/06) and Cancer Research Initiatives Foundation; the Lon V. Smith Foundation (LVS-39420); the Oak Foundation; the OHSU Foundation; the Mermaid I project; the Rudolf-Bartling Foundation; the UK National Institute for Health Research Biomedical Research Centres at the University of Cambridge, Imperial College London, University College Hospital 'Womens Health Theme' and the Royal Marsden Hospital; WorkSafeBC.

Author contributions

These authors contributed equally to this work: J.P.-W., K.L. and H.C.S. Writing group: J.P.-W., K.L., H.C.S., A.V., A.N.A.M., S.A.G., T.A.S., E.L.G., B.L.F., S.J.R. and P.D.D.P. All authors read and approved the final version of the manuscript. Provision of data and/or samples from contributing studies and institutions: J.P.-W., K.L., H.C.S., A.V., J.T., Z.C., H.-Y.L., Y.A.C., Y.-Y.T., X.Q., S.J.R., R.K., J.L., N.L., M.C.L., K.A., H.A.-C., N.A., A.A., S.M.A., F.B., L.B., E.B., J.B.S., M.W.B., M.J.B., G.B., N.B., L.A.B., A.B.W., R.B., R.B., Q.C., I.C., J.C.C., S.C., G.C.-T., J.Q.C., M.S.C., G.A.C., L.S.C., F.J.C., D.W.C., J.M.C., A.D.M., E.D., J.A.D., T.D., Ad.B., M.D., D.F.E., D.E., R.E., A.B.E., P.A.F., D.A.F., J.M.F., M.G.C., A.G.M., G.G.G., R.M.G., J.G.B., M.T.G., M.G., B.G., J.G., P.H., M.H., P.H., F.H., P.H., M.H., C.H., E.H., S.H., A.J., A.J., H.J., K.K., B.Y.K., S.B.K., L.E.K., L.A.K., F.K., G.K., C.K., S.K.K., J.K., D.L., S.L., J.M.L., N.D.L., A.L., D.A.L., D.L., J.L., B.K.L., J.L., K.H.L., J.L., G.L., L.F., A.G.M., K.M., V.M., J.R.M., U.M., F.M., K.B.M., T.N., S.A.N., L.N., R.B.N., H.N., S.N., H.N., K.O., S.H.O., I.O., J.P., C.L.P., T.P., L.M.P., M.C.P., E.M.P., P.R., S.P.R., H.A.R., L.R.R., M.A.R., A.R., I.R., I.K.R., H.B.S., I.S., G.S., V.S., X.-O.S., Y.B.S., W.S., H.S., M.C.S., B.S., D.S., R.S., S.-H.T., K.L.T., D.C.T., P.J.T., S.S.T., A.M.v.A., I.V., R.A.V., D.V., A.V., S.W.-G., R.P.W., N.W., A.S.W., E.W., L.R.W., B.W., Y.L.W., A.H.W., Y.-B.X., H.P.Y., W.Z., A.Z., F.Z., C.M.P., E.L., J.M.S., A.B., B.L.F., E.L.G., P.D.D.P., A.N.A.M., T.A.S. and S.A.G. Collated and organized samples for genotyping: S.J.R. and C.M.P. Genotyping: J.M.C., D.C.T., F.B. and D.V. Data analysis: J.P.-W., J.T., H.-Y.L., Y.A.C., B.L.F., M.L.L. and Y.-Y.T. Functional analyses: S.A.G., A.N.A.M., K.L., H.C.S., A.V., J.L., R.K., and S.J.R. Bioinformatics support: Z.C., X.Q.

Additional information

Supplementary Information accompanies this paper at <http://www.nature.com/naturecommunications>

Competing financial interests: The authors declare no competing financial interests.

Reprints and permission information is available online at <http://npg.nature.com/reprintsandpermissions/>

How to cite this article: Permuth-Wey, J. *et al.* Identification and molecular characterization of a new ovarian cancer susceptibility locus at 17q21.31. *Nat. Commun.* **4**:1627 doi: 10.1038/ncomms2613 (2013).



This work is licensed under a Creative Commons Attribution-NonCommercial-NoDerivs 3.0 Unported License. To view a copy of this license, visit <http://creativecommons.org/licenses/by-nc-nd/3.0/>

Jennifer Permut-Wey^{1,*}, Kate Lawrenson^{2,*}, Howard C. Shen^{2,*}, Aneliya Velkova¹, Jonathan P. Tyrer³, Zhihua Chen⁴, Hui-Yi Lin⁵, Y. Ann Chen⁵, Ya-Yu Tsai¹, Xiaotao Qu⁴, Susan J. Ramus², Rod Karevan², Janet Lee², Nathan Lee², Melissa C. Larson⁶, Katja K. Aben^{7,8}, Hoda Anton-Culver⁹, Natalia Antonenkova¹⁰, Antonis C. Antoniou¹¹, Sebastian M. Armasu⁶, Australian Cancer Study³³, Australian Ovarian Cancer Study³³, François Bacot¹⁴, Laura Baglietto^{15,16}, Elisa V. Bandera¹⁷, Jill Barnholtz-Sloan¹⁸, Matthias W. Beckmann¹⁹, Michael J. Birrer²⁰, Greg Bloom⁴, Natalia Bogdanova²¹, Louise A. Brinton²², Angela Brooks-Wilson²³, Robert Brown²⁴, Ralf Butzow^{25,26}, Qiuyin Cai²⁷, Ian Campbell^{13,28}, Jenny Chang-Claude²⁹, Stephen Chanock²², Georgia Chenevix-Trench¹², Jin Q. Cheng³⁰, Mine S. Cicek³¹, Gerhard A. Coetzee³², Consortium of Investigators of Modifiers of BRCA1/2³³, Linda S. Cook³⁴, Fergus J. Couch³⁵, Daniel W. Cramer³⁶, Julie M. Cunningham³⁷, Agnieszka Dansonka-Mieszkowska³⁸, Evelyn Despierre³⁹, Jennifer A. Doherty⁴⁰, Thilo Dörk²¹, Andreas du Bois^{41,42}, Matthias Dürst⁴³, Douglas F. Easton^{11,44}, Diana Eccles⁴⁵, Robert Edwards⁴⁶, Arif B. Ekici⁴⁷, Peter A. Fasching^{19,48}, David A. Fenstermacher⁴, James M. Flanagan²⁴, Montserrat Garcia-Closas⁴⁹, Aleksandra Gentry-Maharaj⁵⁰, Graham G. Giles^{15,16,51}, Rosalind M. Glasspool⁵², Jesus Gonzalez-Bosquet⁵³, Marc T. Goodman⁵⁴, Martin Gore⁵⁵, Bohdan Górski⁵⁶, Jacek Gronwald⁵⁶, Per Hall⁵⁷, Mari K. Halle^{58,59}, Philipp Harter^{41,42}, Florian Heitz^{41,42}, Peter Hillemanns⁶⁰, Maureen Hoatlin⁶¹, Claus K. Høgdall⁶², Estrid Høgdall^{63,64}, Satoyo Hosono⁶⁵, Anna Jakubowska⁵⁶, Allan Jensen⁶⁴, Heather Jim⁶⁶, Kimberly R. Kalli⁶⁷, Beth Y. Karlan⁶⁸, Stanley B. Kaye⁶⁹, Linda E. Kelemen⁷⁰, Lambertus A. Kiemeny^{7,8,71}, Fumitaka Kikkawa⁷², Gottfried E. Konecny⁴⁸, Camilla Krakstad^{58,59}, Susanne Krüger Kjaer^{62,64}, Jolanta Kupryjanczyk³⁸, Diether Lambrechts^{73,74}, Sandrina Lambrechts³⁹, Johnathan M. Lancaster⁵³, Nhu D. Le⁷⁵, Arto Leminen²⁵, Douglas A. Levine⁷⁶, Dong Liang⁷⁷, Boon Kiong Lim⁷⁸, Jie Lin⁷⁹, Jolanta Lissowska⁸⁰, Karen H. Lu⁸¹, Jan Lubiński⁵⁶, Galina Lurie⁸², Leon F.A. G. Massuger⁸³, Keitaro Matsuo⁶⁵, Valerie McGuire⁸⁴, John R. McLaughlin^{85,86}, Usha Menon⁵⁰, Francesmary Modugno^{87,88,89}, Kirsten B. Moysich⁹⁰, Toru Nakanishi⁹¹, Steven A. Narod⁹², Lotte Nedergaard⁹³, Roberta B. Ness⁹⁴, Heli Nevanlinna²⁶, Stefan Nickels²⁹, Houtan Noushmehr^{32,95,96}, Kunle Odunsi⁹⁷, Sara H. Olson⁹⁸, Irene Orlow⁹⁸, James Paul⁵², Celeste L. Pearce², Tanja Pejovic^{99,100}, Liisa M. Pelttari²⁶, Malcolm C. Pike^{2,98}, Elizabeth M. Poole^{110,111}, Paola Raska¹⁸, Stefan P. Renner¹⁹, Harvey A. Risch¹⁰¹, Lorna Rodriguez-Rodriguez¹⁷, Mary Anne Rossing^{102,103}, Anja Rudolph²⁹, Ingo B. Runnebaum⁴³, Iwona K. Rzepecka³⁸, Helga B. Salvesen^{58,59}, Ira Schwaab¹⁰⁴, Gianluca Severi^{15,16}, Viji Shridhar³⁷, Xiao-Ou Shu²⁷, Yurii B. Shvetsov⁸², Weiva Sieh⁸⁴, Honglin Song³, Melissa C. Southey¹⁰⁵, Beata Spiewankiewicz¹⁰⁶, Daniel Stram², Rebecca Sutphen¹⁰⁷, Soo-Hwang Teo^{108,109}, Kathryn L. Terry³⁶, Daniel C. Tessier¹⁴, Pamela J. Thompson⁵⁴, Shelley S. Tworoger^{110,111}, Anne M. van Altena⁸³, Ignace Vergote³⁹, Robert A. Vierkant⁶, Daniel Vincent¹⁴, Allison F. Vitonis³⁶, Shan Wang-Gohrke¹¹², Rachel Palmieri Weber¹¹³, Nicolas Wentzensen²², Alice S. Whittemore⁸⁴, Elisabeth Wik^{58,59}, Lynne R. Wilkens⁸², Boris Winterhoff¹¹⁴, Yin Ling Woo⁷⁸, Anna H. Wu², Yong-Bing Xiang¹¹⁵, Hannah P. Yang²², Wei Zheng²⁷, Argyrios Ziogas¹¹⁶, Famida Zulkifli^{108,109}, Catherine M. Phelan¹, Edwin Iversen¹¹⁷, Joellen M. Schildkraut^{113,118}, Andrew Berchuck¹¹⁹, Brooke L. Fridley¹²⁰, Ellen L. Goode³¹, Paul D.P. Pharoah^{11,43}, Alvaro N.A. Monteiro¹, Thomas A. Sellers¹ & Simon A. Gayther²

¹ Department of Cancer Epidemiology, Division of Population Sciences, Moffitt Cancer Center, Tampa, Florida 33612, USA. ² Department of Preventive Medicine, Keck School of Medicine, University of Southern California Norris Comprehensive Cancer Center, Los Angeles, California 90033, USA.

³ Department of Oncology, University of Cambridge, Cambridge CB1 8RN, UK. ⁴ Department of Biomedical Informatics, Moffitt Cancer Center, Tampa, Florida 33612, USA. ⁵ Department of Biostatistics, Moffitt Cancer Center, Tampa, Florida 33612, USA. ⁶ Department of Health Science Research, Division of Biomedical Statistics and Informatics, Mayo Clinic, Rochester, Minnesota 55905, USA. ⁷ Department of Epidemiology, Biostatistics and HTA, Radboud University Medical Centre, Nijmegen HB 6500, The Netherlands. ⁸ Comprehensive Cancer Center The Netherlands, Utrecht, Amsterdam 1066CX, The Netherlands. ⁹ Department of Epidemiology, Director of Genetic Epidemiology Research Institute, UCI Center of Medicine, University of California Irvine, Irvine, California 92697, USA. ¹⁰ Byelorussian Institute for Oncology and Medical Radiology Aleksandrov N.N. 223040 Minsk, Belarus. ¹¹ Centre for Cancer Genetic Epidemiology, Department of Public Health and Primary Care, University of Cambridge, Cambridge CB1 8RN, UK. ¹² Cancer Genetics Laboratory,

Queensland Institute of Medical Research, Brisbane, Queensland 4006, Australia. ¹³ Research Division, Peter MacCallum Cancer Centre, Melbourne, Victoria 3002, Australia. ¹⁴ McGill University and Génome Québec Innovation Centre, Montréal (Québec), Canada, H3A 0G1. ¹⁵ Cancer Epidemiology Centre, The Cancer Council Victoria, Melbourne, Carlton, Victoria 3053, Australia. ¹⁶ Centre for Molecular, Environmental, Genetic and Analytical Epidemiology, University of Melbourne, Melbourne, Victoria 3010, Australia. ¹⁷ The Cancer Institute of New Jersey, Robert Wood Johnson Medical School, New Brunswick, New Jersey 08901 USA. ¹⁸ Case Comprehensive Cancer Center, Case Western Reserve University School of Medicine, Cleveland, Ohio 44106 USA. ¹⁹ University Hospital Erlangen, Department of Gynecology and Obstetrics, Friedrich-Alexander-University Erlangen-Nuremberg, Comprehensive Cancer Center, 91054 Erlangen, Germany. ²⁰ Massachusetts General Hospital, Boston, Massachusetts 02114, USA. ²¹ Gynaecology Research Unit, Hannover Medical School, 30625 Hannover, Germany. ²² Division of Cancer Epidemiology and Genetics, National Cancer Institute, Bethesda Maryland, 20892 USA. ²³ Genome Sciences Centre, BC Cancer Agency, Vancouver, British Columbia, Canada, V5Z 1L3. ²⁴ Department of Surgery and Cancer, Imperial College London, London SW7 2AZ, UK. ²⁵ Department of Obstetrics and Gynecology, University of Helsinki and Helsinki University Central Hospital, Helsinki, Finland, 00029 HUS. ²⁶ Department of Pathology, Helsinki University Central Hospital, Helsinki, Finland, 00029 HUS. ²⁷ Vanderbilt Epidemiology Center and Vanderbilt-Ingram Cancer Center, Vanderbilt University School of Medicine, Nashville, Tennessee 37232, USA. ²⁸ Department of Pathology, University of Melbourne, Parkville, Victoria 3053, Australia. ²⁹ German Cancer Research Center, Division of Cancer Epidemiology, 69120 Heidelberg, Germany. ³⁰ Department of Interdisciplinary Oncology, Moffitt Cancer Center, Tampa, Florida, 33612 USA. ³¹ Division of Epidemiology, Department of Health Sciences Research, Mayo Clinic College of Medicine, Rochester, Minnesota, 55905 USA. ³² Department of Urology, Microbiology and Preventive Medicine, University of Southern California, Norris Comprehensive Cancer Center, Los Angeles, California, 90089 USA. ³³ A list of consortia members appears in Supplementary Notes 1–3. ³⁴ Division Epidemiology and Biostatistics, University of New Mexico, Albuquerque, New Mexico, 87131 USA. ³⁵ Department of Laboratory of Medicine and Pathology, Mayo Clinic, Rochester, Minnesota, 55905 USA. ³⁶ Obstetrics and Gynecology Epidemiology Center, Brigham and Women's Hospital and Harvard Medical School, Boston, Massachusetts, 02115 USA. ³⁷ Department of Laboratory Medicine and Pathology, Division of Experimental Pathology, Mayo Clinic, Rochester, Minnesota 55905, USA. ³⁸ Department of Molecular Pathology, The Maria Skłodowska-Curie Memorial Cancer Center and Institute of Oncology, Warsaw, Poland, 02-781. ³⁹ Division of Gynecologic Oncology, Department of Obstetrics and Gynaecology and Leuven Cancer Institute, University Hospitals Leuven, Leuven, Belgium, 3000. ⁴⁰ Section of Biostatistics and Epidemiology, The Geisel School of Medicine at Dartmouth, Lebanon, New Hampshire, 03755 USA. ⁴¹ Department of Gynecology and Gynecologic Oncology, Dr. Horst Schmidt Klinik Wiesbaden, 65199 Wiesbaden, Germany. ⁴² Department of Gynecology and Gynecologic Oncology, Kliniken Essen-Mitte, 45136 Essen, Germany. ⁴³ Department of Gynecology and Obstetrics, Jena University Hospital, 07743 Jena, Germany. ⁴⁴ Centre for Cancer Genetic Epidemiology, Department of Oncology, University of Cambridge, Cambridge CB1 8RN, UK. ⁴⁵ Faculty of Medicine, University of Southampton, University Hospital Southampton, Southampton SO17 1BJ, UK. ⁴⁶ Magee Women's Hospital, Pittsburg, Pennsylvania, 15213 USA. ⁴⁷ Institute of Human Genetics, Friedrich-Alexander-University Erlangen-Nuremberg, 91054 Erlangen, Germany. ⁴⁸ Department of Medicine, Division of Hematology and Oncology, David Geffen School of Medicine, University of California at Los Angeles, Los Angeles, California, 90095 USA. ⁴⁹ Sections of Epidemiology and Genetics at the Institute of Cancer Research and Breakthrough Breast Cancer Research Centre, London, SW7 3RP UK. ⁵⁰ Gynaecological Cancer Research Centre, Women's Cancer, Institute for Women's Health, University College London, London W1T 7DN, UK. ⁵¹ Department of Epidemiology and Preventive Medicine, Monash University, Melbourne VIC 3806, Australia. ⁵² The Beatson West of Scotland Cancer Centre, Glasgow G12 0YN, UK. ⁵³ Department of Women's Oncology, Moffitt Cancer Center, Tampa, Florida, 33612 USA. ⁵⁴ Samuel Oschin Comprehensive Cancer Institute, Cedars Sinai Medical Center, Los Angeles, California, 90048 USA. ⁵⁵ Gynecological Oncology Unit, The Royal Marsden Hospital, London SW3 6JJ, UK. ⁵⁶ International Hereditary Cancer Center, Department of Genetics and Pathology, Pomeranian Medical University, Szczecin 70-115, Poland. ⁵⁷ Department of Epidemiology and Biostatistics, Karolinska Institutet, Stockholm 171-77, Sweden. ⁵⁸ Department of Gynecology and Obstetrics, Haukeland University Hospital, 5006, Bergen, Norway. ⁵⁹ Department of Clinical Science, University of Bergen, 5006, Bergen, Norway. ⁶⁰ Clinics of Obstetrics and Gynaecology, Hannover Medical School, 30625 Hannover, Germany. ⁶¹ Department of Biochemistry and Molecular Biology, Oregon Health and Science University, Portland, Oregon 97239, USA. ⁶² The Juliane Marie Centre, Department of Obstetrics and Gynecology, Rigshospitalet, DK-2100 Copenhagen, Denmark. ⁶³ Department of Pathology, Molecular Unit, Herlev Hospital, University of Copenhagen, 2730, Denmark. ⁶⁴ Virus, Lifestyle and Genes, Danish Cancer Society Research Center, DK-2100 Copenhagen, Denmark. ⁶⁵ Division of Epidemiology and Prevention, Aichi Cancer Center Research Institute, Nagoya, Aichi 464-8681, Japan. ⁶⁶ Department of Health Outcomes and Behavior, Moffitt Cancer Center, Tampa, Florida 33612, USA. ⁶⁷ Department of Medical Oncology, Mayo Clinic, Rochester, Minnesota 55905, USA. ⁶⁸ Women's Cancer Program at the Samuel Oschin Comprehensive Cancer Institute, Cedars-Sinai Medical Center, Los Angeles, California 90048, USA. ⁶⁹ Section of Medicine, Institute of Cancer Research, Sutton SM2 5NG, UK. ⁷⁰ Department of Population Health Research, Alberta Health Services-Cancer Care, Calgary, Alberta, Canada and Departments of Medical Genetics and Oncology, University of Calgary, Calgary, Alberta T2S 3C3, Canada. ⁷¹ Department of Urology, Radboud University Medical Centre, Nijmegen HB 6500, The Netherlands. ⁷² Department of Obstetrics and Gynecology, Nagoya University Graduate School of Medicine, Nagoya, Aichi 466-8550, Japan. ⁷³ Vesalius Research Center, VIB, 3000 Leuven, Belgium. ⁷⁴ Laboratory for Translational Genetics, Department of Oncology, University of Leuven, 3000 Leuven, Belgium. ⁷⁵ Cancer Control Research, BC Cancer Agency, Vancouver, British Columbia G12 0YN, Canada. ⁷⁶ Gynecology Service, Department of Surgery, Memorial Sloan-Kettering Cancer Center, New York, New York 10021, USA. ⁷⁷ College of Pharmacy and Health Sciences, Texas Southern University, Houston, Texas 77004, USA. ⁷⁸ Department of Obstetrics and Gynaecology, Affiliated to UM Cancer Research Institute, Faculty of Medicine, University Malaysia, 59100 Kuala Lumpur, Federal Territory of Kuala Lumpur, Malaysia. ⁷⁹ Department of Epidemiology, The University of Texas MD Anderson Cancer Center, Houston, Texas 77030, USA. ⁸⁰ Department of Cancer Epidemiology and Prevention, The Maria Skłodowska-Curie Memorial Cancer Center, 02-781 Warsaw, Poland. ⁸¹ Department of Gynecologic Oncology, The University of Texas MD Anderson Cancer Center, Houston, Texas 77030, USA. ⁸² Cancer Epidemiology Program, University of Hawaii Cancer Center, Honolulu, Hawaii 96813, USA. ⁸³ Department of Gynaecology, Radboud University Medical Centre, Nijmegen HB 6500, The Netherlands. ⁸⁴ Department of Health Research and Policy—Epidemiology, Stanford University School of Medicine, Stanford, California 94305, USA. ⁸⁵ Dalla Lana School of Public Health, Faculty of Medicine, University of Toronto, Toronto, Ontario M5T 3M7, Canada. ⁸⁶ Samuel Lunenfeld Research Institute, Mount Sinai Hospital, Toronto, Ontario M5G 1X5, Canada. ⁸⁷ Womens Cancer Research Program, Magee-Womens Research Institute and University of Pittsburgh Cancer Institute, Pittsburgh, Pennsylvania 15213, USA. ⁸⁸ Department of Epidemiology, University of Pittsburgh Graduate School of Public Health, Pittsburgh, Pennsylvania 15213, USA. ⁸⁹ Department of Obstetrics, Gynecology and Reproductive Sciences, University of Pittsburgh School of Medicine, Pittsburgh, Pennsylvania 15213, USA. ⁹⁰ Department of Cancer Prevention and Control, Roswell Park Cancer Institute, Buffalo, New York 14263, USA. ⁹¹ Department of Gynecologic Oncology, Aichi Cancer Center Central Hospital, Nagoya, Aichi 464-8681, Japan. ⁹² Women's College Research Institute, University of Toronto, Toronto, Ontario M5G 1N8, Canada. ⁹³ Department of Pathology, Rigshospitalet, University of Copenhagen, DK-2100 Copenhagen, Denmark. ⁹⁴ The University of Texas School of Public Health, Houston, Texas 77030, USA. ⁹⁵ USC Epigenome Center, Keck School of Medicine, University of Southern California, Norris Comprehensive Cancer Center, Los Angeles, California 90089, USA. ⁹⁶ Departamento de Genética, Faculdade de Medicina de Ribeirão Preto, Universidade de São Paulo, Ribeirão Preto, São Paulo 14049-900, Brasil. ⁹⁷ Department of Gynecologic Oncology, Roswell Park Cancer Institute, Buffalo, New York 14263, USA. ⁹⁸ Department of Epidemiology and Biostatistics, Memorial Sloan-Kettering Cancer Center, New York, New York 10065, USA. ⁹⁹ Department of Obstetrics and Gynecology, Oregon Health and Science University, Portland, Oregon 97239, USA. ¹⁰⁰ Knight Cancer Institute, Oregon Health and Science University, Portland, Oregon 97239, USA. ¹⁰¹ Department of Chronic Disease Epidemiology, Yale University School of Public Health and School of Medicine, New Haven, Connecticut 06520, USA. ¹⁰² Program in Epidemiology, Division of Public Health Sciences, Fred Hutchinson Cancer Research Center, Seattle,

Washington 98109, USA. ¹⁰³ Department of Epidemiology, University of Washington, Seattle, Washington 98109, USA. ¹⁰⁴ Institut für Humangenetik Wiesbaden, 65187 Wiesbaden, Germany. ¹⁰⁵ Genetic Epidemiology Laboratory, Department of Pathology, The University of Melbourne, Melbourne, Victoria 3053, Australia. ¹⁰⁶ Department of Gynecologic Oncology, The Maria Skłodowska-Curie Memorial Cancer Center and Institute of Oncology, Warsaw 02-781, Poland. ¹⁰⁷ Pediatrics Epidemiology Center, College of Medicine, University of South Florida, Tampa, Florida 33612, USA. ¹⁰⁸ Cancer Research Initiatives Foundation, Sime Darby Medical Centre, 47500 Selangor, Malaysia. ¹⁰⁹ Department of Surgery, Faculty of Medicine, University Malaya, 59100 Kuala Lumpur, Federal Territory of Kuala Lumpur, Malaysia. ¹¹⁰ Channing Division of Network Medicine, Harvard Medical School and Brigham and Women's Hospital, Boston, Massachusetts 02115, USA. ¹¹¹ Department of Epidemiology, Harvard School of Public Health, Boston, Massachusetts 02115, USA. ¹¹² Department of Obstetrics and Gynecology, University of Ulm, Ulm 89081, Germany. ¹¹³ Department of Community and Family Medicine, Duke University Medical Center, Durham, North Carolina 27708, USA. ¹¹⁴ Department of Obstetrics and Gynecology, Mayo Clinic, Rochester, Minnesota 55905, USA. ¹¹⁵ Shanghai Cancer Institute, Shanghai 2200-25, China. ¹¹⁶ Department of Epidemiology, Center for Cancer Genetics Research and Prevention, School of Medicine, University of California Irvine, Irvine, California 92697, USA. ¹¹⁷ Department of Statistical Science, Duke University, Durham, North Carolina 27708, USA. ¹¹⁸ Cancer Prevention, Detection and Control Research Program, Duke Cancer Institute, Durham, North Carolina 27708-0251, USA. ¹¹⁹ Department of Obstetrics and Gynecology, Duke Cancer Institute, Durham, North Carolina 27708, USA. ¹²⁰ Department of Biostatistics, University of Kansas Medical Center, Kansas City, Kansas 66160, USA. * These authors contributed equally to this work. Correspondence and requests for materials should be addressed to J.P.-W. or T.A.S. or S.G. (email: Jenny.Wey@moffitt.org or Thomas.Sellers@moffitt.org or gayther@usc.edu)